

## 2.5in IDE to Dual Compact Flash SSD Adapter Card

CF2X2IDE25

DE: Bedienungsanleitung - de.startech.com

FR: Guide de l'utilisateur - fr.startech.com

ES: Guía del usuario - es.startech.com

IT: Guida per l'uso - it.startech.com

NL: Gebruiksaanwijzing - nl.startech.com

PT: Guia do usuário - pt.startech.com

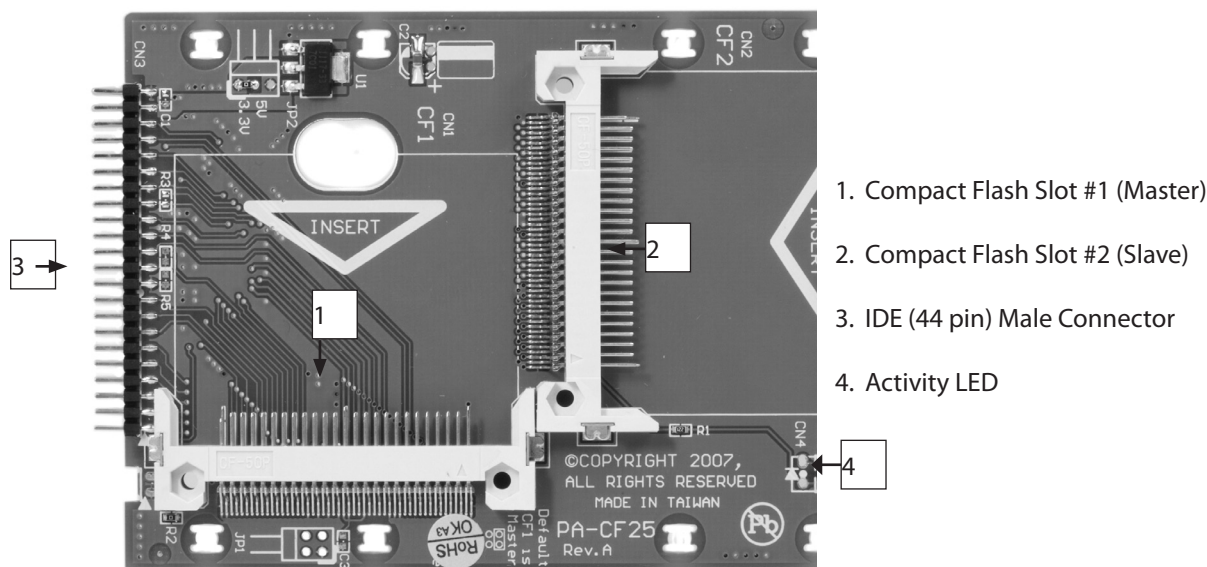
\*actual product may vary from photos

### Installation

**WARNING!** Computer equipment can be severely damaged by static electricity. Be sure that you are properly grounded before opening your computer case or touching your hard drive. StarTech.com recommends that you wear an anti-static strap when installing any computer component. If an anti-static strap is unavailable, discharge yourself of any static electricity build-up by touching a large grounded metal surface (such as the computer case) for several seconds. Be sure to handle your hard drive carefully and consult your hard drive and laptop manufacturer for details on how to remove the drive.

**WARNING!** The CF2XIDE25 adapter does not support hot-swapping. Please ensure that the host computer is powered down when connecting/disconnecting Compact Flash cards to/from the adapter.

**Please note:** To simplify installation, **power down the computer or IDE storage device** into which the adapter will be installed, and ensure there is a 44-pin IDE connection available.



1. With the Compact Flash card/MicroDrive label facing upward (visible), align the holes on the connector end of the Compact Flash card with the pins provided by the CF2X2IDE25 Compact Flash slot #1.
2. Apply gentle pressure to the Compact Flash/MicroDrive card, until the pins provided by the adapter are fully inserted into the Compact Flash/MicroDrive connector holes.
3. Repeat steps #1 and #2, by installing a second Compact Flash card/MicroDrive into Compact Flash Slot #2 (slave drive).
4. Connect the CF2X2IDE25 adapter directly to an available IDE port on the host computer, by aligning the pins provided by the adapter with the holes provided by a 44 pin IDE port. Once aligned, apply gentle pressure to the board until it is firmly seated within the IDE slot.

## Specifications

<b>Connectors</b>	2 x Compact Flash 50 pin Type I or II 1 x 44 pin male IDE header
<b>Product Dimensions (W x H x L)</b>	70 mm (2.76 in ) x 7 mm (0.28 in ) x 96 mm (3.78 in )
<b>Product Weight</b>	26 g (0.92 oz )
<b>Regulatory Certifications</b>	RoHS, UL
<b>LED</b>	Activity indicator

### FCC Compliance Statement

This equipment has been tested and found to comply with the limits for a Class B digital device, pursuant to part 15 of the FCC Rules. These limits are designed to provide reasonable protection against harmful interference in a residential installation. This equipment generates, uses and can radiate radio frequency energy and, if not installed and used in accordance with the instructions, may cause harmful interference to radio communications. However, there is no guarantee that interference will not occur in a particular installation. If this equipment does cause harmful interference to radio or television reception, which can be determined by turning the equipment off and on, the user is encouraged to try to correct the interference by one or more of the following measures:

- Reorient or relocate the receiving antenna.
- Increase the separation between the equipment and receiver.
- Connect the equipment into an outlet on a circuit different from that to which the receiver is connected.
- Consult the dealer or an experienced radio/TV technician for help.

### Use of Trademarks, Registered Trademarks, and other Protected Names and Symbols

This manual may make reference to trademarks, registered trademarks, and other protected names and/or symbols of third-party companies not related in any way to StarTech.com. Where they occur these references are for illustrative purposes only and do not represent an endorsement of a product or service by StarTech.com, or an endorsement of the product(s) to which this manual applies by the third-party company in question. Regardless of any direct acknowledgement elsewhere in the body of this document, StarTech.com hereby acknowledges that all trademarks, registered trademarks, service marks, and other protected names and/or symbols contained in this manual and related documents are the property of their respective holders.

### Technical Support

StarTech.com's lifetime technical support is an integral part of our commitment to provide industry-leading solutions. If you ever need help with your product, visit [www.startech.com/support](http://www.startech.com/support) and access our comprehensive selection of online tools, documentation, and downloads.

For the latest drivers/software, please visit [www.startech.com/downloads](http://www.startech.com/downloads)

### Warranty Information

This product is backed by a lifetime warranty.

In addition, StarTech.com warrants its products against defects in materials and workmanship for the periods noted, following the initial date of purchase. During this period, the products may be returned for repair, or replacement with equivalent products at our discretion. The warranty covers parts and labor costs only. StarTech.com does not warrant its products from defects or damages arising from misuse, abuse, alteration, or normal wear and tear.

### Limitation of Liability

In no event shall the liability of StarTech.com Ltd. and StarTech.com USA LLP (or their officers, directors, employees or agents) for any damages (whether direct or indirect, special, punitive, incidental, consequential, or otherwise), loss of profits, loss of business, or any pecuniary loss, arising out of or related to the use of the product exceed the actual price paid for the product. Some states do not allow the exclusion or limitation of incidental or consequential damages. If such laws apply, the limitations or exclusions contained in this statement may not apply to you.