

## 2 Port ExpressCard SuperSpeed USB 3.0 Adapter

ECUSB3S2



\*actual product may vary from photos

DE: Bedienungsanleitung - [de.startech.com](http://de.startech.com)

FR: Guide de l'utilisateur - [fr.startech.com](http://fr.startech.com)

ES: Guía del usuario - [es.startech.com](http://es.startech.com)

IT: Guida per l'uso - [it.startech.com](http://it.startech.com)

NL: Gebruiksaanwijzing - [nl.startech.com](http://nl.startech.com)

PT: Guia do usuário - [pt.startech.com](http://pt.startech.com)

For the most up-to-date information, please visit: [www.startech.com](http://www.startech.com)

## FCC Compliance Statement

This equipment has been tested and found to comply with the limits for a Class B digital device, pursuant to part 15 of the FCC Rules. These limits are designed to provide reasonable protection against harmful interference in a residential installation. This equipment generates, uses and can radiate radio frequency energy and, if not installed and used in accordance with the instructions, may cause harmful interference to radio communications. However, there is no guarantee that interference will not occur in a particular installation. If this equipment does cause harmful interference to radio or television reception, which can be determined by turning the equipment off and on, the user is encouraged to try to correct the interference by one or more of the following measures:

- Reorient or relocate the receiving antenna.
- Increase the separation between the equipment and receiver.
- Connect the equipment into an outlet on a circuit different from that to which the receiver is connected.
- Consult the dealer or an experienced radio/TV technician for help.

## Use of Trademarks, Registered Trademarks, and other Protected Names and Symbols

This manual may make reference to trademarks, registered trademarks, and other protected names and/or symbols of third-party companies not related in any way to StarTech.com. Where they occur these references are for illustrative purposes only and do not represent an endorsement of a product or service by StarTech.com, or an endorsement of the product(s) to which this manual applies by the third-party company in question. Regardless of any direct acknowledgement elsewhere in the body of this document, StarTech.com hereby acknowledges that all trademarks, registered trademarks, service marks, and other protected names and/or symbols contained in this manual and related documents are the property of their respective holders.

# Table of Contents

<b>Introduction</b> .....	<b>1</b>
Packaging Contents .....	1
System Requirements.....	1
<b>Installation</b> .....	<b>2</b>
Hardware Installation .....	2
Driver Installation.....	2
Verifying Installation .....	3
<b>Specifications</b> .....	<b>4</b>
<b>Technical Support</b> .....	<b>5</b>
<b>Warranty Information</b> .....	<b>5</b>

# Introduction

10x faster than that of USB 2.0, this SuperSpeed USB 3.0 adapter card enables you to access your data and transfer files much faster than USB 2.0! The new USB 3.0 standard supports transfer rates of up to 5Gbps, while still providing connectivity and support for the older USB 2.0 (480Mbps) and 1.1 (12Mbps) devices.

## Packaging Contents

- 1 x USB 3.0 ExpressCard Adapter
- 1 x Driver CD
- 1 x Instruction Manual

## System Requirements

- ExpressCard/34 or /54 enabled computer system
- Microsoft® Windows® 2000/ XP/ Server 2003/ Vista/ 7 (32/64-bit) / 8 (32/64-bit)



# Installation

## Hardware Installation

1. ExpressCard adapters can be hot-plugged into a computer system, while running. Turning the computer off to insert/remove ExpressCard adapters is not necessary.
2. Locate your computer's ExpressCard slot. This card can fit into an ExpressCard/34 or ExpressCard/54 slot.
3. Slide the adapter card into the ExpressCard slot fully and you should hear the card engage with a clicking noise.

**NOTE:** Some ExpressCard/54 slots hold an ExpressCard/34 adapter loosely, so movement of the computer or the adapter card can result in accidental disconnection. An ExpressCard/34 to /54 bracket is recommended for those types of computers (i.e. StarTech.com ID: **ECBRACKET**).

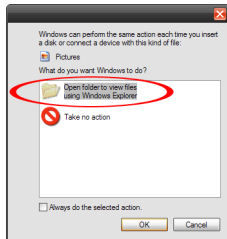
4. The card should now be detected by the computer systems operating system.
5. To remove the card, press the card into the ExpressCard slot all the way and you should hear it disengage with a clicking sound. The card should now be automatically ejected from the slot.

**OPTIONAL:** If the ExpressCard slot on the computer does not provide enough power to the USB ports, an external power adapter would be required and plugged into the DC power connector.

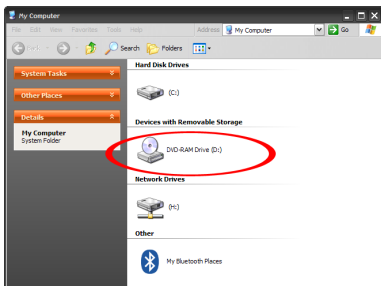
## Driver Installation

### Windows XP/Server 2003/Vista/7

1. Once the computer has started and the operating system is fully loaded, insert the provided Driver CD into the computer's CD/DVD drive.
2. AutoPlay should give you the option to browse the files on the CD or automatically open the CD.



If Autorun does not start, Go into “My Computer” and access the CD/DVD drive that the CD is in.

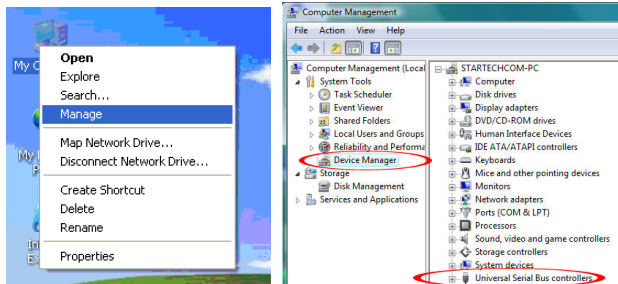


3. Run the “setup.exe” file located in “**ExpressCard USB 3.0 2Port Card (ECUSB3S2)**”. Follow the onscreen instructions to complete the driver installation.

## Verifying Installation

### Windows 2000/XP/Server 2003/Vista/7

From the main desktop, right-click on “My Computer” (“Computer” in Vista/7), then select Manage. In the new Computer Management window, select Device Manager from the left window panel.



In the Device Manager, under the Universal Serial Bus Controllers category, you should see the new entries for the USB 3.0 controller card.

# Specifications

<b>Bus Interface</b>	ExpressCard (34mm form factor) USB 3.0 rev1.0 Intel xHCI rev0.95
<b>External Connectors</b>	2 x USB 3.0 type A Female 1 x DC power connector
<b>Chipset ID</b>	NEC uPD720200
<b>Maximum Data Transfer Rate</b>	USB 3.0: 5Gbps
<b>Operating Temperature</b>	0°C ~ 50°C (32°F ~ 122°F)
<b>Storage Temperature</b>	-20°C ~ 60°C (-4°F ~ 140°F)
<b>Humidity</b>	0% ~ 85% RH
<b>Power Adapter (optional)</b>	5VDC, 2A, type H plug, center positive
<b>Compatible Operating Systems</b>	Windows 2000/XP/Server 2003/Vista/ 7 (32/64-bit) /8 (32/64-bit)

# Technical Support

StarTech.com's lifetime technical support is an integral part of our commitment to provide industry-leading solutions. If you ever need help with your product, visit [www.startech.com/support](http://www.startech.com/support) and access our comprehensive selection of online tools, documentation, and downloads.

For the latest drivers/software, please visit [www.startech.com/downloads](http://www.startech.com/downloads)

## Warranty Information

This product is backed by a lifetime warranty.

In addition, StarTech.com warrants its products against defects in materials and workmanship for the periods noted, following the initial date of purchase. During this period, the products may be returned for repair, or replacement with equivalent products at our discretion. The warranty covers parts and labor costs only. StarTech.com does not warrant its products from defects or damages arising from misuse, abuse, alteration, or normal wear and tear.

### Limitation of Liability

In no event shall the liability of StarTech.com Ltd. and StarTech.com USA LLP (or their officers, directors, employees or agents) for any damages (whether direct or indirect, special, punitive, incidental, consequential, or otherwise), loss of profits, loss of business, or any pecuniary loss, arising out of or related to the use of the product exceed the actual price paid for the product. Some states do not allow the exclusion or limitation of incidental or consequential damages. If such laws apply, the limitations or exclusions contained in this statement may not apply to you.



Hard-to-find made easy. At StarTech.com, that isn't a slogan. It's a promise.

StarTech.com is your one-stop source for every connectivity part you need. From the latest technology to legacy products — and all the parts that bridge the old and new — we can help you find the parts that connect your solutions.

We make it easy to locate the parts, and we quickly deliver them wherever they need to go. Just talk to one of our tech advisors or visit our website. You'll be connected to the products you need in no time.

Visit [www.startech.com](http://www.startech.com) for complete information on all StarTech.com products and to access exclusive resources and time-saving tools.

*StarTech.com is an ISO 9001 Registered manufacturer of connectivity and technology parts. StarTech.com was founded in 1985 and has operations in the United States, Canada, the United Kingdom and Taiwan servicing a worldwide market.*