

PCI Express Video Capture Card for HDMI®, DVI and Component - 1080p

PEXHDCAP



*actual product may vary from photos

DE: Bedienungsanleitung - de.startech.com

FR: Guide de l'utilisateur - fr.startech.com

ES: Guía del usuario - es.startech.com

IT: Guida per l'uso - it.startech.com

NL: Gebruiksaanwijzing - nl.startech.com

PT: Guia do usuário - pt.startech.com

For the most up-to-date information, please visit: www.startech.com

FCC Compliance Statement

This equipment has been tested and found to comply with the limits for a Class B digital device, pursuant to part 15 of the FCC Rules. These limits are designed to provide reasonable protection against harmful interference in a residential installation. This equipment generates, uses and can radiate radio frequency energy and, if not installed and used in accordance with the instructions, may cause harmful interference to radio communications. However, there is no guarantee that interference will not occur in a particular installation. If this equipment does cause harmful interference to radio or television reception, which can be determined by turning the equipment off and on, the user is encouraged to try to correct the interference by one or more of the following measures:

- Reorient or relocate the receiving antenna.
- Increase the separation between the equipment and receiver.
- Connect the equipment into an outlet on a circuit different from that to which the receiver is connected.
- Consult the dealer or an experienced radio/TV technician for help.

Use of Trademarks, Registered Trademarks, and other Protected Names and Symbols

This manual may make reference to trademarks, registered trademarks, and other protected names and/or symbols of third-party companies not related in any way to StarTech.com. Where they occur these references are for illustrative purposes only and do not represent an endorsement of a product or service by StarTech.com, or an endorsement of the product(s) to which this manual applies by the third-party company in question. Regardless of any direct acknowledgement elsewhere in the body of this document, StarTech.com hereby acknowledges that all trademarks, registered trademarks, service marks, and other protected names and/or symbols contained in this manual and related documents are the property of their respective holders.

Table of Contents

Introduction	1
Packaging Contents	1
System Requirements.....	1
Installation	2
Hardware Installation	2
Driver/Software Installation	2
How to Use	3
Stream Catcher.....	3
Snapshot Files.....	4
Record Files	4
Schedule Recording	5
Settings.....	5
Device Settings	5
Record Settings.....	6
Video Streaming	6
Streaming using RTMP Streaming Service Provider	6
Streaming with HLS using Appserve	12
Specifications	16
Technical Support	17
Warranty Information	17

Introduction

The PEXHDCAP PCI Express HD Video Capture Card enables you to capture high-definition video and audio from an HDMI®, DVI or Component (1080p) source to your computer through a PCI Express expansion slot.

Support for full 1080p video input, as well as HDMI and RCA stereo audio makes this HD capture card the perfect solution for creating digital copies of your videos for editing and compiling. The added versatility of 3 different video inputs (HDMI, DVI, Component), plus the ability to capture VGA input using the included DVI to VGA adapter, gives you the freedom to connect a multitude of audio-video devices to your computer, quickly and easily.

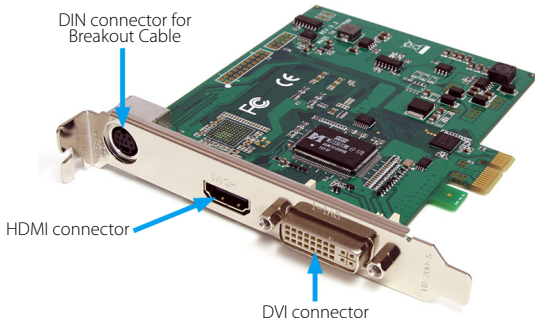
This PCI Express capture card supports NTSC and PAL systems, and comes complete with an easy to use video capture software suite, allowing you to record video or take still screenshots and save them to your PC.

Packaging Contents

- 1 x PCI Express Video Capture Card
- 1 x RCA Component Breakout Cable
- 1 x DVI to VGA Adapter
- 1 x Driver CD
- 1 x Instruction Manual

System Requirements

- PCI Express enabled computer system with available PCIe slot
- CPU: Intel Core 2 Duo (for 720p capture)
Intel Core i5 (for 1080p capture)
- Memory: 1 GB
- Video: DirectX 9.0c Compatible Graphics Card



Installation

WARNING! PCI Express cards, like all computer equipment, can be severely damaged by static electricity. Be sure that you are properly grounded before opening your computer case or touching your PCI Express card. StarTech.com recommends that you wear an anti-static strap when installing any computer component. If an anti-static strap is unavailable, discharge yourself of any static electricity build-up by touching a large grounded metal surface (such as the computer case) for several seconds. Also be careful to handle the PCI Express card by its edges and not the gold connectors.

Hardware Installation

1. Turn your computer off and any peripherals connected to the computer (i.e. Printers, external hard drives, etc.). Unplug the power cable from the rear of the power supply on the back of the computer and disconnect all peripheral devices.
2. Remove the cover from the computer case. See documentation for your computer system for details.
3. Locate an open PCI Express slot and remove the metal cover plate on the rear of the computer case (Refer to documentation for your computer system for details.). Note that this card will work in PCI Express slots of additional lanes (i.e. x4, x8 or x16 slots).
4. Gently insert the card into the open PCI Express slot and fasten the bracket to the rear of the case.
5. Place the cover back onto the computer case.
6. Insert the power cable into the socket on the power supply and reconnect all other connectors removed in Step 1.

Driver/Software Installation

1. Upon starting Windows, if the "Found New Hardware" wizard appears on the screen, cancel/close the window and insert the included Driver CD into the computer's CD/DVD drive.
2. AutoPlay should automatically prompt you to run "Setup.exe". If not, open "My Computer" and double-click on the CD/DVD drive. Double-click the "Setup.exe" icon.
3. Proceed through the Installation wizard.
4. Complete the wizard and this should automatically install all necessary drivers/software. An icon for "StreamCatcher" should now be on the desktop.

How to Use

Connect the video/audio source to the video capture card using the appropriate cable(s). To connect a VGA source, use the included DVI to VGA adapter. If you wish to input audio from a source other than HDMI, make sure to connect the breakout cable and connect the audio source using stereo RCA cables (red/white).

Stream Catcher

Double-click the "StreamCatcher" icon on the desktop to launch the video capture application. This will bring up the main menu screen that contains the video preview window and recording controls. Additional options and configurations can be accessed through the Main Menu.



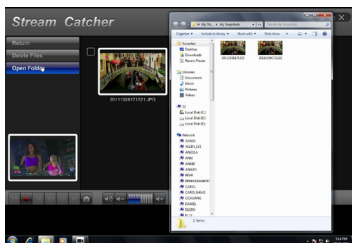
Initial Setup Note: If you have a video source connected, but are not able to view anything in the video window, go to the "Settings" section first, to make sure the "device" is configured properly. If using an **HDCP protected** video source (i.e. retail Blu-Ray movie), this will also result in no video preview/capture.



Manually recording video can be done by simply pressing the "Record" button from the control menu along the bottom of the Stream Catcher window. The frame around the video window will turn red, while recording. When you wish to stop recording, press the "Stop" button. The "Snapshot" button allows of taking a screen capture of the video stream.

Snapshot Files

Clicking this button will open the folder location where all of the snapshot files are saved in Windows.



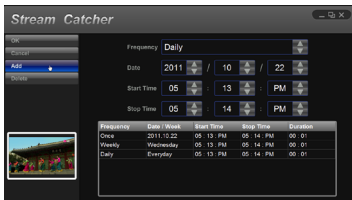
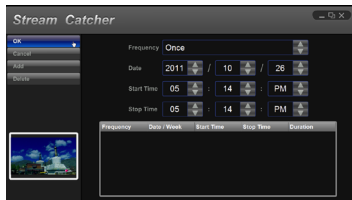
Record Files

Clicking this button will open the folder location where all of the recorded video files are saved in Windows.



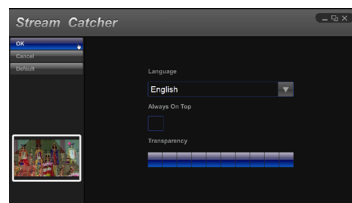
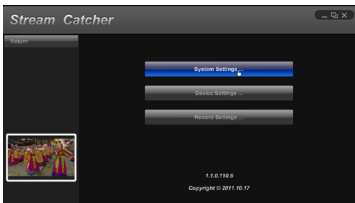
Schedule Recording

The software can be setup to start recording at a specific time and date and occur once or multiple times. Setup the schedule and click the "Add" button to save it. Multiple schedules can be maintained at the same time. To remove a schedule, simply select it from the list, and click the "Delete" button.



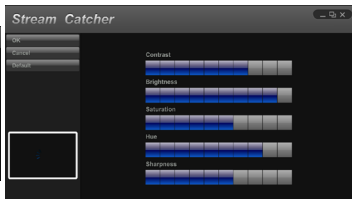
Settings

The Settings menu is broken into different sections for configuring various aspects of the software. **System Settings** contains configuration options for the user interface.



Device Settings

Contains configuration options for the video capture hardware. Video and audio input source (HDMI, component, DVI/VGA), video system (NTSC/PAL), aspect ratio and video properties (sharpness, contrast, saturation, hue, brightness) can all be adjusted from this menu.



Record Settings

Contains settings related to video recording and snapshots. The location to save recorded video files as well as recording quality can be configured. The location to save the snapshot images and file format (JPG, BMP) are also set here.



Video Streaming

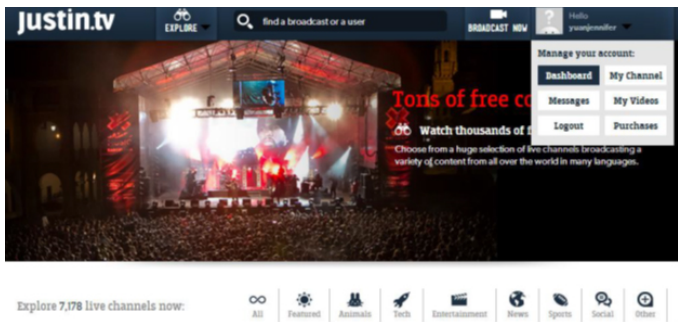
Streaming using RTMP Streaming Service Provider

1. Obtain the RTMP settings for your video streaming service. The below steps show how to obtain these settings from Justin.TV and Twitch.

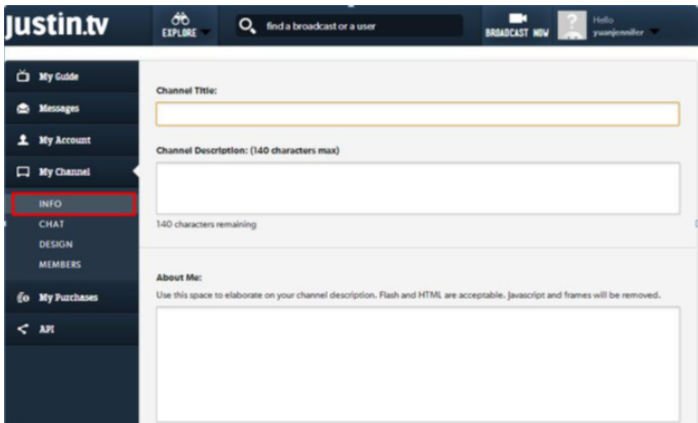
Note: Steps may vary from different streaming service providers, please contact your service provider for specific details.

For Justin.tv

1. Open your web browser, and browse to the following website:
<http://www.justin.tv>
2. Login and select Dashboard from manager your account.



3. Select My Channel from the left side menu, followed by INFO



4. In the lower section of this page, you will find Stream Key: Click Show, you will see the key.

Embed Code:

Chat Embed Code:

Stream Key: **Show**

Stream Key: **RESET** **HIDE**

For Twitch

- a) Open your web browser, and browse to the following website:
http://www.Twitch.tv
- b) Login and select Dashboard from your account drop down menu.

The screenshot shows the Twitch website interface. At the top, the Twitch logo is on the left, and a search bar, 'Browse', 'Go Turbo', a user dropdown menu for 'juanfes01', and a 'Following' button are on the right. The user dropdown menu is open, showing options: Channel, Messages, Profile, Settings, **Dashboard** (highlighted with a red box), and Log Out. Below the navigation is the 'Broadcaster Dashboard' header. Underneath, there are tabs for 'Live', 'Recorded', 'Highlights', 'Bookmarks', 'Editing', 'Activity', and 'Stats'. The main area is split into two columns. The left column has a 'Title this broadcast' text input field, a 'Not Playing' dropdown, a 'Game Title' input field, and an 'Update' button. The right column features a video player with a 'Toggle video preview' button and a 'Hide' button. A black error banner at the bottom of the video player reads 'Failed to load video. Please Submit an Issue Report'.

- c) In the top left select Streaming Apps.

Broadcaster Dashboard

Live Recorded Highlights Bookmarks Editing Activity Stats

Streaming Apps

Title this broadcast

Not Playing Game Title Update

Offline 11

Toggle video preview Hide

Failed to load video. Please [Submit an Issue Report](#)

d) Click the Show Key button, you will see the key.

twitch

Browse Go Turbo yourtest21 Following

Broadcast while you play

The applications and methods listed on this page are the most common tools for broadcasting your games. For a more in-depth exploration of optimization or help with troubleshooting, visit the [Support Center](#).

To use the applications listed on this page you may need your stream key. Anyone can use this key to broadcast to your channel so do not to show it on video.

Show Key

XSplit

Optimized for and used by gamers all over the world, XSplit is the most straight-forward way to get your gameplay online in minutes.

Download

Wirecast

Professional live production software available for \$495. Has support for multiple cameras, additional media, chroma key, titles, transitions and much more.

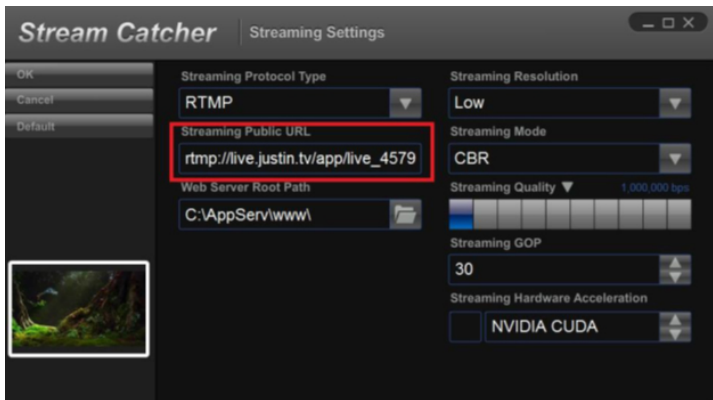
Download

Flash Media Encoder

When high-quality streaming is your priority, the rugged and free Adobe® Flash® Media Live Encoder can help you stream from just about any source.

Download Config Version 3.0

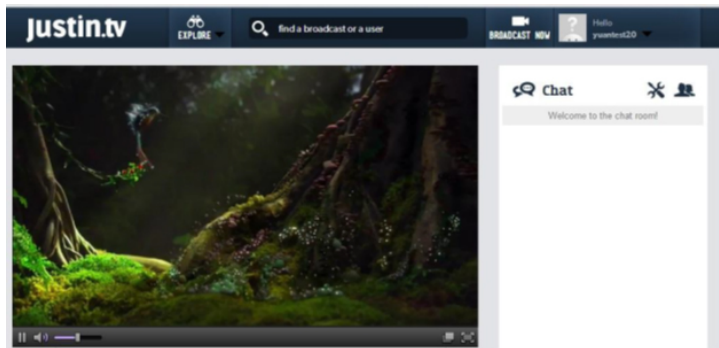
2. Open the Stream Catcher Program, and then select RTMP
3. Obtaining the streaming URL from your Streaming service provider.
Note: This is specific to your service provider and will likely contain the key located in the Step 1.)
4. In the field marked Streaming Public URL, type the Public URL for your streaming service followed by.
Note: this will be specific to your service. In the example below we are using Justin.tv. The Justin.tv URL is comprised of "rtmp://live.justin.tv/app/" followed by your stream key.



5. Return the screen catcher home page and click the blue record dot (pictured below).



6. The video will now be streamed to your Streaming service.

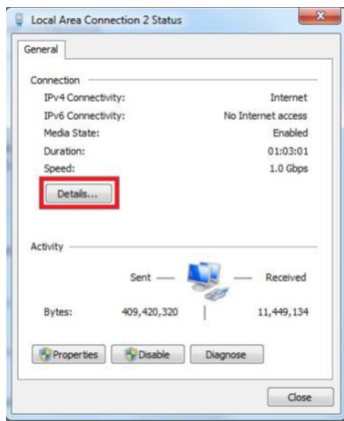


Streaming with HLS using Appserve

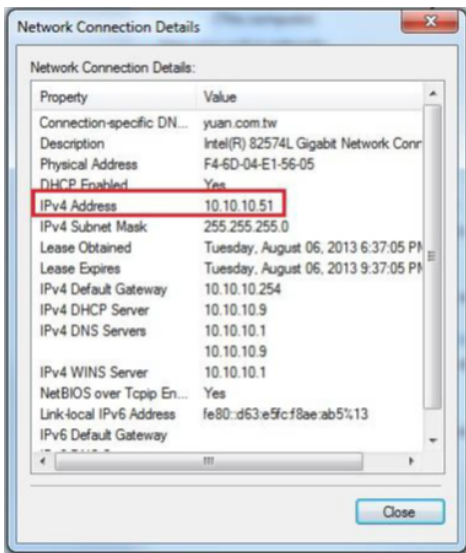
1. Download and install appserv from the following URL:
<http://www.appservnetwork.com/>
2. Locate your IP address.
Windows 8
 - a) Open Control panel
 - b) Click Network and Sharing Center
 - c) Click Local Area Connection 2



- d) Click the Details button

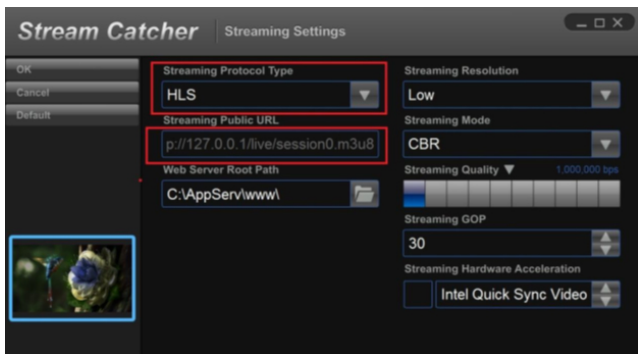


- e) The IP Address is displayed.



Note: Steps for obtaining IP address will vary from operating systems. Please contact your system administrator for further details

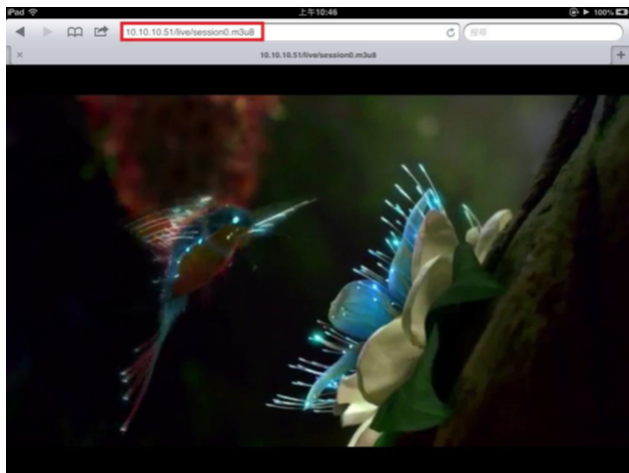
3. Open the Stream Catcher Program, and then select HLS
4. In the Streaming Public URL, type your IP address followed by: live/session0.m3u8



5. Return the screen catcher home page and click the blue record dot (pictured below).



6. Using a different device on your network (Tablet, laptop, etc.) open a web browser and type the full URL used in step 5. The URL is built using your computer IP address with the following at the end: live/session0.m3u8



Specifications

Host Interface	PCI Express (x1 slot connector)
Form Factor	Standard (Full) Profile
Chipset ID	MStar MST3367CMK-LF-170
External Connectors	1 x 29-pin DVI-I female 1 x HDMI type A female 5 x RCA female (via breakout cable)
Audio Support	Yes (Stereo)
Video Systems	NTSC-M, PAL-B/M/60
Video Encoding	H.264, MPEG-4
Supported Resolutions	TV: 480i/p, 576i/p, 720p, 1080i/p PC: 800 x 600, 1024 x 768, 1280 x 720, 1280 x 1024, 1440 x 900, 1920 x 1080
Operating Temperature	0°C ~ 70°C (32°F ~ 158°F)
Dimensions (LxWxH)	96.0mm x 10.0mm x 110.0mm
Weight	300g
Compatible Operating Systems	Microsoft® Windows® XP/Vista/7 (32/64-bit)

Technical Support

StarTech.com's lifetime technical support is an integral part of our commitment to provide industry-leading solutions. If you ever need help with your product, visit www.startech.com/support and access our comprehensive selection of online tools, documentation, and downloads.

For the latest drivers/software, please visit www.startech.com/downloads

Warranty Information

This product is backed by a two year warranty.

In addition, StarTech.com warrants its products against defects in materials and workmanship for the periods noted, following the initial date of purchase. During this period, the products may be returned for repair, or replacement with equivalent products at our discretion. The warranty covers parts and labor costs only. StarTech.com does not warrant its products from defects or damages arising from misuse, abuse, alteration, or normal wear and tear.

Limitation of Liability

In no event shall the liability of StarTech.com Ltd. and StarTech.com USA LLP (or their officers, directors, employees or agents) for any damages (whether direct or indirect, special, punitive, incidental, consequential, or otherwise), loss of profits, loss of business, or any pecuniary loss, arising out of or related to the use of the product exceed the actual price paid for the product. Some states do not allow the exclusion or limitation of incidental or consequential damages. If such laws apply, the limitations or exclusions contained in this statement may not apply to you.

Hard-to-find made easy. At StarTech.com, that isn't a slogan. It's a promise.

StarTech.com is your one-stop source for every connectivity part you need. From the latest technology to legacy products — and all the parts that bridge the old and new — we can help you find the parts that connect your solutions.

We make it easy to locate the parts, and we quickly deliver them wherever they need to go. Just talk to one of our tech advisors or visit our website. You'll be connected to the products you need in no time.

Visit www.startech.com for complete information on all StarTech.com products and to access exclusive resources and time-saving tools.

StarTech.com is an ISO 9001 Registered manufacturer of connectivity and technology parts. StarTech.com was founded in 1985 and has operations in the United States, Canada, the United Kingdom and Taiwan servicing a worldwide market.