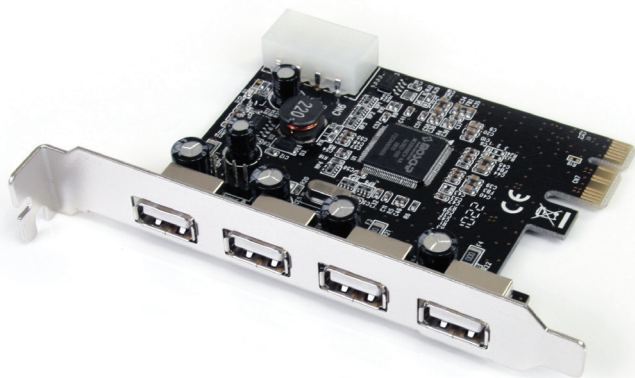


4 Independent Port PCI Express USB 2.0 Adapter Card

PEXUSB400



DE: Bedienungsanleitung - de.startech.com

FR: Guide de l'utilisateur - fr.startech.com

ES: Guía del usuario - es.startech.com

IT: Guida per l'uso - it.startech.com

NL: Gebruiksaanwijzing - nl.startech.com

PT: Guia do usuário - pt.startech.com

Use of Trademarks, Registered Trademarks, and other Protected Names and Symbols

This manual may make reference to trademarks, registered trademarks, and other protected names and/or symbols of third-party companies not related in any way to StarTech.com. Where they occur these references are for illustrative purposes only and do not represent an endorsement of a product or service by StarTech.com, or an endorsement of the product(s) to which this manual applies by the third-party company in question. Regardless of any direct acknowledgement elsewhere in the body of this document, StarTech.com hereby acknowledges that all trademarks, registered trademarks, service marks, and other protected names and/or symbols contained in this manual and related documents are the property of their respective holders.

Table of Contents

Introduction.....	1
Packaging Contents	1
System Requirements	1
Installation.....	2
Hardware Installation.....	2
Driver Installation	2
Verifying Installation.....	3
Specifications.....	4
Technical Support.....	5
Warranty Information.....	5

Introduction

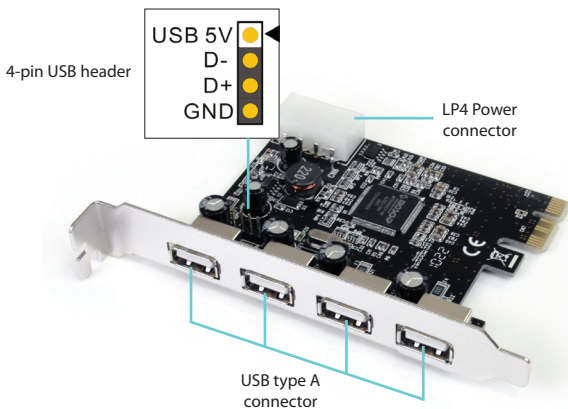
This StarTech.com 4-Port PCI Express USB 2.0 Adapter Card lets you connect four USB 2.0 external peripherals and to your computer system, with support for high speed USB data transfer rates of up to 480 Mbps per port. This high speed adapter card features four independent USB 2.0 ports capable of reaching transfer speeds of 480Mbps each, and can address 127 USB devices on each port, for a maximum of 508 USB devices.

Packaging Contents

- 1 x PEXUSB400 adapter card
- 1 x LP4 molex to SATA Power adapter cable
- 1 x Instruction Manual

System Requirements

- PCI Express enabled computer system with available slot
- Microsoft® Windows® 2000/XP/Server 2003/Vista/Server 2008 R2/7 (32/64-bit), or Apple® Mac OS® 10.4/10.5/10.6, or Linux®



Installation

WARNING! PCI Express cards, like all computer equipment, can be severely damaged by static electricity. Be sure that you are properly grounded before opening your computer case or touching your PCI Express card. StarTech.com recommends that you wear an anti-static strap when installing any computer component. If an anti-static strap is unavailable, discharge yourself of any static electricity build-up by touching a large grounded metal surface (such as the computer case) for several seconds. Also be careful to handle the PCI Express card by its edges and not the gold connectors.

Hardware Installation

1. Turn your computer off and any peripherals connected to the computer (i.e. Printers, external hard drives, etc.). Unplug the power cable from the rear of the power supply on the back of the computer and disconnect all peripheral devices.
2. Remove the cover from the computer case. See documentation for your computer system for details.
3. Locate an open PCI Express slot and remove the metal cover plate on the rear of the computer case (Refer to documentation for your computer system for details.). Note that this card will work in PCI Express slots of additional lanes (i.e. x4, x8 or x16 slots).
4. Insert the card into the open PCI Express slot and fasten the bracket to the rear of the case.
5. Connect an LP4 molex power connector from the computer power supply to the LP4 connector on the card. An LP4 to SATA Power adapter cable is included, if only SATA Power connectors are available.
NOTE: The LP4 power is optional, as the card can draw power from the PCI Express bus, however the amount of power is limited. It is recommended to have the LP4 power connected when possible, to ensure that all USB peripherals are able to receive the full amount of power available.
6. If connecting an internal USB device or front panel port (single), connect the USB header cable to the header connector on the card, located just behind the top external USB port. The +5V pin is marked with a triangle (see photo on previous page).
NOTE: This will disable the adjacent external port.
7. Place the cover back onto the computer case.
8. Insert the power cable into the socket on the power supply and reconnect all other connectors removed in Step 1.

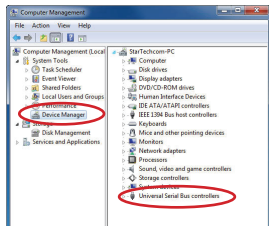
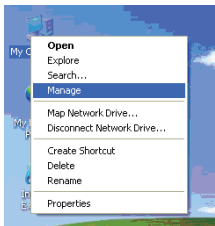
Driver Installation

No driver installation is required for supported operating systems, as this USB 2.0 adapter card is natively supported, so the drivers are already installed.

Verifying Installation

Windows 2000/XP/Server 2003/Vista/Server 2008 R2/7

From the main desktop, right-click on “My Computer” (“Computer” in Vista/7), then select Manage. In the new Computer Management window, select Device Manager from the left window panel.



In the Device Manager, under the Universal Serial Bus Controllers category, you should see the new entries for the USB controller card.

Specifications

Bus Interface	PCI Express rev. 1.1 (x1 slot connector)
Chipset ID	MosChip MSC9990CV
Connectors	4 x USB type A female 1 x 4-pin USB header (shared) 1 x LP4 molex
LEDs	1 x LP4 Power connected (internal)
Form Factor	Full Profile
Supported Standards	USB 2.0 EHCI 1.0, OHCI 1.0a
Maximum Data Transfer Rate	USB 2.0: 480Mbps
Operating Temperature	0°C ~ 70°C (32°F ~ 158°F)
Storage Temperature	-40°C ~ 85°C (-40°F ~ 185°F)
Humidity	5 ~ 95% RH
Dimensions	68.4mm x 87.0mm x 21.0mm
Weight	50g
Compatible Operating Systems	Windows 2000/XP/Server 2003/Vista/ Server 2008 R2/7 (32/64-bit), Mac OS 10.4/10.5/10.6, Linux

Technical Support

StarTech.com's lifetime technical support is an integral part of our commitment to provide industry-leading solutions. If you ever need help with your product, visit www.startech.com/ support and access our comprehensive selection of online tools, documentation, and downloads.

Warranty Information

This product is backed by a lifetime warranty.

In addition, StarTech.com warrants its products against defects in materials and workmanship for the periods noted, following the initial date of purchase. During this period, the products may be returned for repair, or replacement with equivalent products at our discretion. The warranty covers parts and labor costs only. StarTech.com does not warrant its products from defects or damages arising from misuse, abuse, alteration, or normal wear and tear.

Limitation of Liability

In no event shall the liability of StarTech.com Ltd. and StarTech.com USA LLP (or their officers, directors, employees or agents) for any damages (whether direct or indirect, special, punitive, incidental, consequential, or otherwise), loss of profits, loss of business, or any pecuniary loss, arising out of or related to the use of the product exceed the actual price paid for the product. Some states do not allow the exclusion or limitation of incidental or consequential damages. If such laws apply, the limitations or exclusions contained in this statement may not apply to you.

Hard-to-find made easy. At StarTech.com, that isn't a slogan. It's a promise.

StarTech.com is your one-stop source for every connectivity part you need. From the latest technology to legacy products — and all the parts that bridge the old and new — we can help you find the parts that connect your solutions.

We make it easy to locate the parts, and we quickly deliver them wherever they need to go. Just talk to one of our tech advisors or visit our website. You'll be connected to the products you need in no time.

Visit www.startech.com for complete information on all StarTech.com products and to access exclusive resources and time-saving tools.

StarTech.com is an ISO 9001 Registered manufacturer of connectivity and technology parts. StarTech.com was founded in 1985 and has operations in the United States, Canada, the United Kingdom and Taiwan servicing a worldwide market.