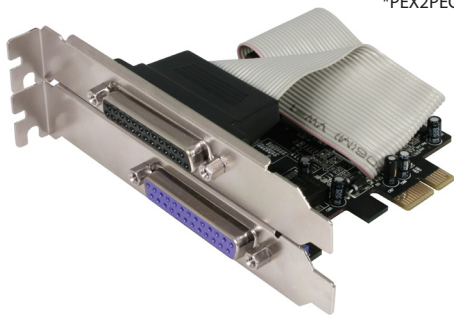


1 Port PCI Express Parallel Adapter Card - EPP/ECP

2 Port PCI Express Parallel Adapter Card - EPP/ECP

PEX1PECP

PEX2PECP



\*PEX2PECP shown

\*actual product may vary from photos

DE: Bedienungsanleitung - [de.startech.com](http://de.startech.com)

FR: Guide de l'utilisateur - [fr.startech.com](http://fr.startech.com)

ES: Guía del usuario - [es.startech.com](http://es.startech.com)

IT: Guida per l'uso - [it.startech.com](http://it.startech.com)

NL: Gebruiksaanwijzing - [nl.startech.com](http://nl.startech.com)

PT: Guia do usuário - [pt.startech.com](http://pt.startech.com)

## FCC Compliance Statement

This equipment has been tested and found to comply with the limits for a Class B digital device, pursuant to part 15 of the FCC Rules. These limits are designed to provide reasonable protection against harmful interference in a residential installation. This equipment generates, uses and can radiate radio frequency energy and, if not installed and used in accordance with the instructions, may cause harmful interference to radio communications. However, there is no guarantee that interference will not occur in a particular installation. If this equipment does cause harmful interference to radio or television reception, which can be determined by turning the equipment off and on, the user is encouraged to try to correct the interference by one or more of the following measures:

Reorient or relocate the receiving antenna.

Increase the separation between the equipment and receiver.

Connect the equipment into an outlet on a circuit different from that to which the receiver is connected.

Consult the dealer or an experienced radio/TV technician for help.

## Use of Trademarks, Registered Trademarks, and other Protected Names and Symbols

This manual may make reference to trademarks, registered trademarks, and other protected names and/or symbols of third-party companies not related in any way to StarTech.com. Where they occur these references are for illustrative purposes only and do not represent an endorsement of a product or service by StarTech.com, or an endorsement of the product(s) to which this manual applies by the third-party company in question. Regardless of any direct acknowledgement elsewhere in the body of this document, StarTech.com hereby acknowledges that all trademarks, registered trademarks, service marks, and other protected names and/or symbols contained in this manual and related documents are the property of their respective holders.

# Table of Contents

Introduction .....	1
Features .....	1
Before You Begin .....	1
Contents .....	1
System Requirements .....	1
Installation.....	2
Installing the drivers (Windows XP).....	2
Verifying Installation.....	4
Parallel port address configuration.....	4
Windows 2000 .....	5
Windows 2003 Server.....	5
Specifications.....	6
Technical Support.....	7
Warranty Information.....	7

# Introduction

Thank you for purchasing a StarTech.com PCI Express Parallel Card. This card will allow you to add a DB25 connectivity for optimized performance from your parallel devices, while taking advantage of the speed and power of PCI Express with plug and play connections to devices such as printers, scanners and more.

## Features

- Compliant with PCI Express Base Specification 1.0a
- Supports Standard Parallel Port(SPP), Enhanced Parallel Port (EPP), & Enhanced Capability Port (ECP)
- Offers data transfer rates of up to 1.5 MB/Sec

## Packaging Contents

- 1 x PCI Express Parallel Card
- 1 x Driver CD
- 1 x Instruction Manual

## System Requirements

- Microsoft Windows 2000/ XP/ Server 2003/ Vista/ Server 2008 R2/ 7 (32/64-bit)
- PCI Express enabled computer with an available PCI Express slot

# Installation

1. Make sure that your system is unplugged and that you are grounded.
2. Remove the cover of your system (see your computer's user manual for details, if necessary) and gently turn your computer onto its side, so that the PCI Express expansion slot openings on the motherboard are facing upwards.
3. Locate an empty PCI Express slot and remove the metal plate that covers the corresponding rear bracket. You may need a Phillips screwdriver to perform this step. Retain the screw! You will need it to secure the card later.
4. Gently insert the card into the empty slot, making sure it is firmly seated.
5. Secure the card in place using the screw you removed in Step 3.  
PEX2PECP Only: Secure the second port to another available rear bracket.
6. Replace and secure the computer cover.

## Installing the Drivers

Upon rebooting the computer, Windows will detect the newly installed card, and launch the Found New Hardware Wizard.

### Windows XP

1. When the Found New Hardware Wizard appears, select Install from a list or specific location (Advanced), then click Next.



2. Insert the Driver CD, and select Search for the best driver in these locations. Please ensure that there is a checkmark next to Include this location in the search, and that all other checkmarks have been removed. Enter the following path in the text line provided:

For PEX1PECP : D:\PCIE\1P\XP

For PEC2PECP : D:\PCIE\2P\XP

Alternatively, you can click on the Browse button, and locate the file according to the path specified above.

Once the correct folder has been selected, please click on the Next button to advance.

3. If you receive a notification that the drivers you are installing have not yet passed Windows Logo Testing, please click on Continue Anyway, followed by Finish. Please note that the software included with PEX1PECP/PEC2PECP has been thoroughly tested for stability and compatibility.
4. Windows will notify you once the driver installation has completed. Please click Finish.

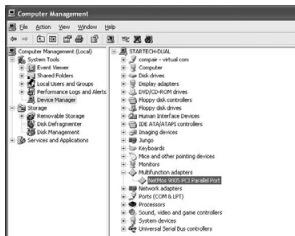
You will be required to follow steps 1-4 again, following the initial installation. Please repeat these steps to conclude installation.



## Verifying installation

To verify that the installation has completed successfully and that the newly installed ports are now available:

1. Right click on My Computer, left-click on Manage. Select Device Manager.
2. Click on the [+] sign next to Ports (COM & LPT). Here, you should see the newly installed parallel port(s) as well as a Multifunction adapter, as shown below:



## Parallel Port Address configuration

Some parallel devices require a specific port designation, in order for the devices to function properly. If your peripherals are functioning correctly with the newly installed ports, there is no need to modify the parallel port address. However, if you are experiencing difficulties:

1. From the Device Manager window, double-click Ports (COM & LPT), then double-click the NetMos PCI ECP Parallel Port.
2. Select the Port Settings tab.
3. At the LPT Port Number box, click on the down arrow and select an LPT port that is not in use:

Following this selection, please click on OK to save your changes.



## Windows 2000

1. When the Found New Hardware Wizard appears, click Next to advance to the next window.
2. Select Search for a suitable driver for my device (recommended) and click Next.
3. Check Specify a location, and remove all other checkmarks from this window.
4. Insert the Driver CD, and enter the following path in the text line beneath Copy manufacturer's files from:  
For PEX1PECP : D:\PCIe\1P\2000  
For PEX2PECP : D:\PCIe\2P\2000  
Alternatively, you can click on the Browse button, and locate the file according to the path specified above.  
Once the correct folder has been selected, please click on the OK button to advance.
5. Click Next, to approve the installation. Click Finish, once the installation has completed.

## Windows 2003 Server

1. At the Found New Hardware Wizard, select Install from a list or specific location (Advanced), then click Next.
2. Insert the Driver CD, and select Search for the best driver in these locations. Place a checkmark next to Include this location in the search, and remove any other checkmarks from this page.
3. In the text box provided, type in:  
For PEX1PECP : D:\PCIe\1P\2003  
For PEX2PECP : D:\PCIe\2P\2003  
Alternatively, you can click on the Browse button, and locate the file according to the path specified above.
4. Once the correct folder has been selected, please click on the Next button to advance.
5. If you receive a notification that the drivers you are installing have not yet passed Windows Logo Testing, please click on Continue Anyway, followed by Finish. Please note that the software included with PEX1PECP/PEC2PECP has been thoroughly tested for stability and compatibility.

You will be required to follow steps 1-5 again, following the initial installation. Please repeat these steps to complete installation.

# Specifications

<b>Host Interface</b>	PCI Express
<b>Connectors</b>	PEX1PECP: 1 x 25 pins parallel connector PEX2PECP: 2 x 25 pins parallel connector
<b>Data Transfer Rate (Max.)</b>	1.5MB/sec
<b>Chipset</b>	MOSCHIP MCS9805CV MOSCHIP MCS9815CV
<b>OS Support</b>	Windows 95/ 98SE/ ME/ 2000/ XP(32/64bit)/ Vista(32/64bit)/ 7(32/64bit)/ Server 2008 R2, and Linux
<b>Operation Temperature</b>	0 °C ~ 70 °C
<b>Storage Temperature</b>	0 ~ 115 °C
<b>Product Dimensions</b>	PEX1PECP: 92x21x120mm PEX2PECP: 92x21x120mm + 40x21x120mm
<b>Product Weight</b>	PEX1PECP: 90g PEX2PECP: 95g

# Technical Support

StarTech.com's lifetime technical support is an integral part of our commitment to provide industry-leading solutions. If you ever need help with your product, visit [www.startech.com/support](http://www.startech.com/support) and access our comprehensive selection of online tools, documentation, and downloads.

## Warranty Information

This product is backed by a lifetime year warranty.

In addition, StarTech.com warrants its products against defects in materials and workmanship for the periods noted, following the initial date of purchase. During this period, the products may be returned for repair, or replacement with equivalent products at our discretion. The warranty covers parts and labor costs only. StarTech.com does not warrant its products from defects or damages arising from misuse, abuse, alteration, or normal wear and tear.

### Limitation of Liability

In no event shall the liability of StarTech.com Ltd. and StarTech.com USA LLP (or their officers, directors, employees or agents) for any damages (whether direct or indirect, special, punitive, incidental, consequential, or otherwise), loss of profits, loss of business, or any pecuniary loss, arising out of or related to the use of the product exceed the actual price paid for the product. Some states do not allow the exclusion or limitation of incidental or consequential damages. If such laws apply, the limitations or exclusions contained in this statement may not apply to you.

# StarTech.com

Hard-to-find **made easy**®

Hard-to-find made easy. At StarTech.com, that isn't a slogan. It's a promise.

StarTech.com is your one-stop source for every connectivity part you need. From the latest technology to legacy products — and all the parts that bridge the old and new — we can help you find the parts that connect your solutions.

We make it easy to locate the parts, and we quickly deliver them wherever they need to go. Just talk to one of our tech advisors or visit our website. You'll be connected to the products you need in no time.

Visit **[www.startech.com](http://www.startech.com)** for complete information on all StarTech.com products and to access exclusive resources and time-saving tools.

*StarTech.com is an ISO 9001 Registered manufacturer of connectivity and technology parts. StarTech.com was founded in 1985 and has operations in the United States, Canada, the United Kingdom and Taiwan servicing a worldwide market.*