

## Wireless N USB 2.0 Network Print Server



\*actual product may vary from photos

DE: Bedienungsanleitung - [de.startech.com](http://de.startech.com)

FR: Guide de l'utilisateur - [fr.startech.com](http://fr.startech.com)

ES: Guía del usuario - [es.startech.com](http://es.startech.com)

IT: Guida per l'uso - [it.startech.com](http://it.startech.com)

NL: Gebruiksaanwijzing - [nl.startech.com](http://nl.startech.com)

PT: Guia do usuário - [pt.startech.com](http://pt.startech.com)

For the most up-to-date information, please visit: [www.startech.com](http://www.startech.com)

## FCC Compliance Statement

This equipment has been tested and found to comply with the limits for a Class B digital device, pursuant to part 15 of the FCC Rules. These limits are designed to provide reasonable protection against harmful interference in a residential installation. This equipment generates, uses and can radiate radio frequency energy and, if not installed and used in accordance with the instructions, may cause harmful interference to radio communications. However, there is no guarantee that interference will not occur in a particular installation. If this equipment does cause harmful interference to radio or television reception, which can be determined by turning the equipment off and on, the user is encouraged to try to correct the interference by one or more of the following measures:

- Reorient or relocate the receiving antenna.
- Increase the separation between the equipment and receiver.
- Connect the equipment into an outlet on a circuit different from that to which the receiver is connected.
- Consult the dealer or an experienced radio/TV technician for help

This device complies with part 15 of the FCC Rules. Operation is subject to the following two conditions: (1) This device may not cause harmful interference, and (2) this device must accept any interference received, including interference that may cause undesired operation.

Changes or modifications not expressly approved by StarTech.com could void the user's authority to operate the equipment.

This Transmitter must not be co-located or operating in conjunction with any other antenna or transmitter.

This equipment complies with FCC RF radiation exposure limits set forth for an uncontrolled environment. This equipment should be installed and operated with a minimum distance of 20 centimeters between the radiator and your body.

## Industry Canada Statement

This Class B digital apparatus complies with Canadian ICES-003.

Cet appareil numérique de la classe [B] est conforme à la norme NMB-003 du Canada.

This device complies with Industry Canada licence-exempt RSS standard(s).

Operation is subject to the following two conditions:

(1) This device may not cause interference, and

(2) This device must accept any interference, including interference that may cause undesired operation of the device.

Le présent appareil est conforme aux CNR d'Industrie Canada applicables aux appareils radio exempts de licence.

L'exploitation est autorisée aux deux conditions suivantes:

- (1) l'appareil ne doit pas produire de brouillage, et
- (2) l'utilisateur de l'appareil doit accepter tout brouillage radioélectrique subi, même si le brouillage est susceptible d'en compromettre le fonctionnement.

#### **IC Radiation Exposure Statement:**

This equipment complies with IC RSS-102 radiation exposure limit set forth for an uncontrolled environment. This equipment should be installed and operated with minimum distance 20cm between the radiator and your body.

#### **Déclaration d'exposition à la radiation:**

Cet équipement respecte les limites d'exposition aux rayonnements IC définies pour un environnement non contrôlé. Cet équipement doit être installé et mis en marche à une distance minimale de 20 cm qui sépare l'élément rayonnant de votre corps.

L'émetteur ne doit ni être utilisé avec une autre antenne ou un autre émetteur ni se trouver à leur proximité.

FCC ID: 2AA3I-PM1115UW-A

IC: 11232A-PM1115UWA

#### **Use of Trademarks, Registered Trademarks, and other Protected Names and Symbols**

This manual may make reference to trademarks, registered trademarks, and other protected names and/or symbols of third-party companies not related in any way to StarTech.com. Where they occur these references are for illustrative purposes only and do not represent an endorsement of a product or service by StarTech.com, or an endorsement of the product(s) to which this manual applies by the third-party company in question. Regardless of any direct acknowledgement elsewhere in the body of this document, StarTech.com hereby acknowledges that all trademarks, registered trademarks, service marks, and other protected names and/or symbols contained in this manual and related documents are the property of their respective holders.

# Table of Contents

|                                   |           |
|-----------------------------------|-----------|
| <b>Introduction</b> .....         | <b>1</b>  |
| Packaging Contents .....          | 1         |
| System Requirements.....          | 1         |
| <b>Product Diagram</b> .....      | <b>2</b>  |
| Front View .....                  | 2         |
| Rear View.....                    | 2         |
| LED Indicators.....               | 3         |
| Reset Button.....                 | 3         |
| <b>Installation</b> .....         | <b>4</b>  |
| Hardware Installation .....       | 4         |
| Software Installation.....        | 4         |
| <b>Technical Support</b> .....    | <b>16</b> |
| <b>Warranty Information</b> ..... | <b>16</b> |

# Introduction

## Packaging Contents

- 1x Wireless USB Print Server
- 1x Power Adapter
- 1x Software CD
- 1x Quick Start Guide

## System Requirements

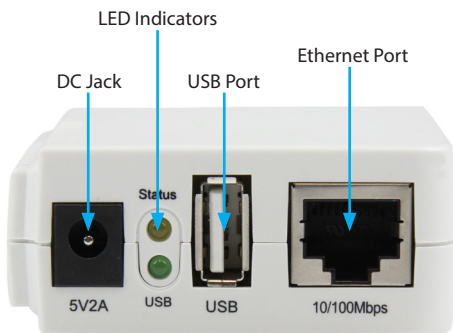
- Windows® 8 / 8.1 (32/64bit), 7 (32/64), Vista (32/64), XP (32/64), Windows Server® 2012, 2008 R2, 2003 (32/64), Mac OS 10.x, 9.x, Linux 2.4.x / 2.6.x / 3.x (Tested up to 3.5)

# Product Diagram

## Front View



## Rear View



# LED Indicators

| LED    | State                      | Indication  |
|--------|----------------------------|---|
| Status | Blinking for POST (Yellow) | When power is connected, the Status indicator will flash five times, and then go solid. |
| USB    | On (Green)                 | LAN Port has a valid network connection at 100Mbps.                                     |
| WLAN   | On (Yellow)                | LAN Port has a valid network connection at 10Mbps.                                      |

## Reset Button

### Reboot the Print Server:

1. Verify the power of print server is turned on.
2. Press the reset button once, and then release it.  
**Note:** This will restart the print server and stop all on-going and pending print jobs.

### Print a Self-test Page

1. With the print server powered on and your printer connected and powered, press the reset button for 8 seconds, and then release it.
2. A test page including the current print server settings will be printed.

### Reset to Factory Defaults:

1. Disconnect the power adapter from the print server.
2. Hold down the reset button.
3. Reconnect the power adapter while continuing to hold the reset button for about 5 seconds.
4. Release the reset button.
5. The print server will restart.  
**WARNING:** This will erase all settings on the print server and return it to factory default.

## Default Settings

**Username:** admin

**Password:** (None)

**Wireless Mode:** Ad-Hoc (Peer-to-Peer)

**SSID:** PM1115UW

**IP Address:** 192.168.0.10

# Installation

## Hardware Installation

1. Turn off the power to your printer.
2. Connect the print server to your printer with the appropriate printer cable.
3. Turn the printer on.
4. Plug in the AC power adapter into the DC jack on the print server.
5. Wait ~40 seconds for the print server's Power On Self Test (POST) to complete.
6. **(Optional)** Connect an RJ45 network cable to the print server, then to your network switch or wall jack.

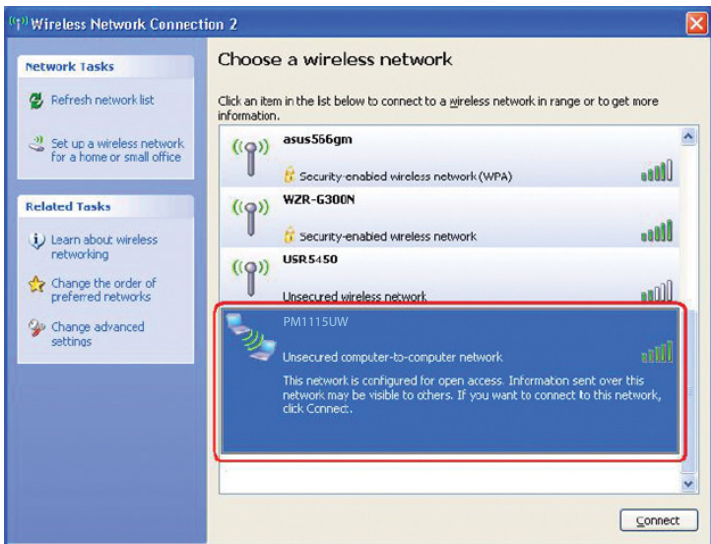
## Software Installation

For full operating instructions and specifications, please visit [www.startech.com/PM1115UW](http://www.startech.com/PM1115UW)

### Windows

1. Find the wireless print server by viewing your available wireless networks and connecting to the **PM1115UW** SSID.





**Note:** If you cannot find the PM1115UW network, then your version of Windows may not be configured to show Ad-Hoc wireless networks. To resolve this issue, you need to use an RJ45 cable to either connect your print server to your network switch or to connect directly to the computer. When the setup is complete, you can disconnect the network cable.

2. Insert the setup CD into your CD/DVD drive.
3. Select **"Run autorun.exe"** from the Autoplay menu. If Autoplay is disabled on your system, browse to your CD/DVD drive and run the application.

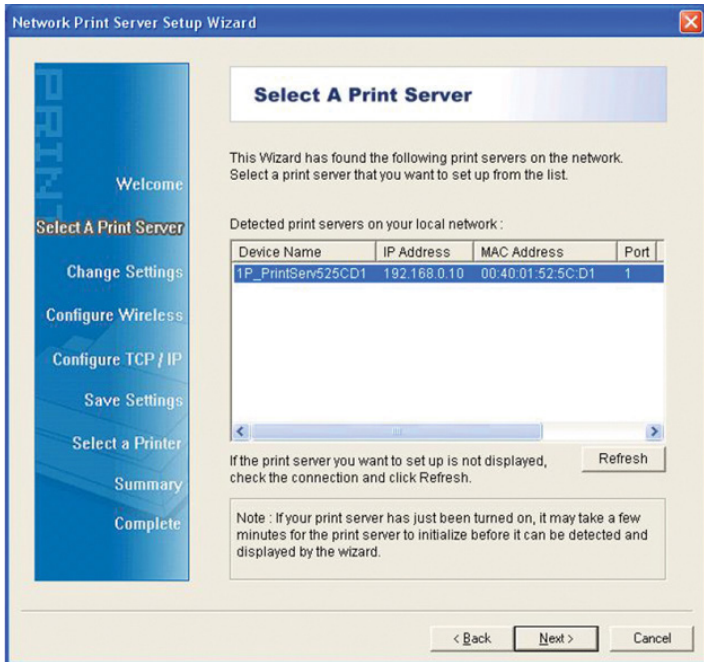


**Note:** The setup CD will install the print server driver, PSAdmin and Setup Wizard into your computer. The default installation directory will be C:\Program files\ Network Print Monitor.

4. Click **Next** on the following screen and the wizard will automatically discover the print server. At this point of the install, you may Windows Firewall message, click **Allow Access** if prompted.



- From the “Select A Print Sever” screen, select the print server that you want to configure and click **Next**.



- Click "Yes, I want to change settings"; then click **Next** to configure the wireless and IP settings of the print server to match your network:

Welcome

Select A Print Server

Change Settings

**Configure Wireless**

Configure TCP / IP

Save Settings

Select a Printer

Summary

Complete

## Basic Wireless Settings

Configure the following wireless settings on the print server. These settings must match your wireless network for the print server to communicate with all computers over a wireless connection.

Communication Type : SSID : Channel Number : Data Transmit Rates : Transmit Mode : 

1. In Infrastructure (Access Point) mode, the wireless network print server will communicate with network computers through an Access Point.

2. In Ad-Hoc or 802.11b Ad-Hoc mode, wireless devices communicate with each other directly.

If the communication type is 'Infrastructure (Access Point)', you do not have to enter the Channel number used by the Access Point.

&lt; Back

Next &gt;

Cancel

### Select your desired Communication Type:

- Infrastructure (Access Point)
- Ad-Hoc (Peer-to-Peer; **default**)

### SSID:

- If using Ad-Hoc mode, enter the SSID you would like the print server to display
- If using Infrastructure mode, enter the SSID of the access point that you want to connect to

**Note:** If you require a site survey to determine the names of available access points, please use the web console method, outlined in the full online manual.

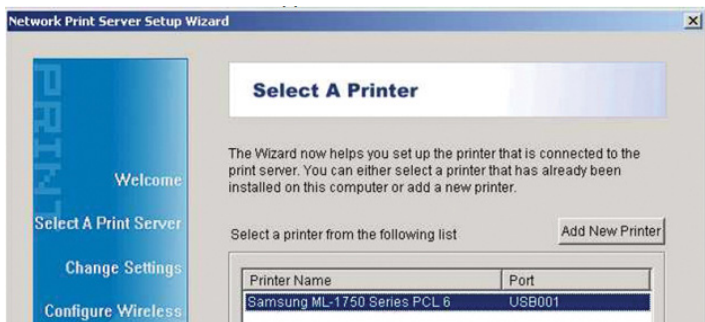
- Channel: optional
- Data Transmit Rates: select Auto or others
- Transmit Mode: select Auto or others
- On the Wireless Security screen, enable or disable WEP/WPA/WPA2 encryption, configure according to your wireless network and click Next.
- On the TCP/IP Settings screen, specify a fixed or dynamic IP address for the print server, a fixed IP address is highly recommended. Click Next.

**Note:** The IP address of print server must be within the same subnet as your network adapter.

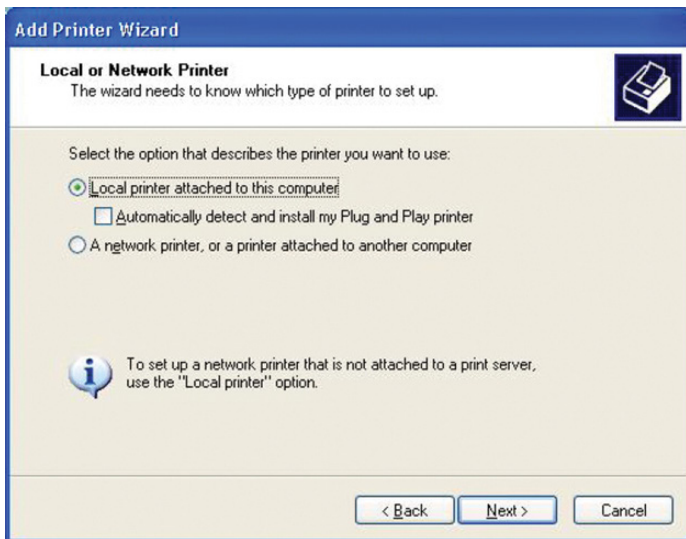
7. In the setup wizard, select an already configured printer from the list, click **Next**, **Next** and then **Finish** to complete the installation.

## OR

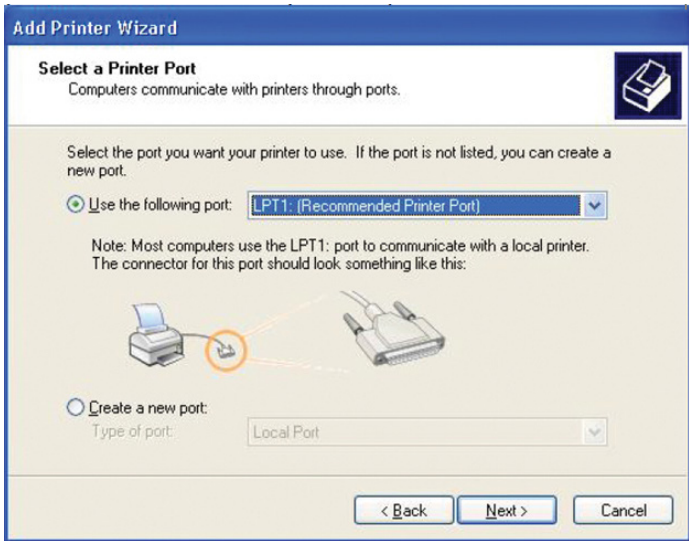
Select **Add New Printer** to launch the Windows Add Printer Wizard, if the print server is connected to a printer that hasn't been installed before and does not appear in the list.



8. Click **Next** and select **Local Printer**, make sure the "Automatically detect and install my Plug and Play printer" check box is **NOT** checked. Then click **Next**.

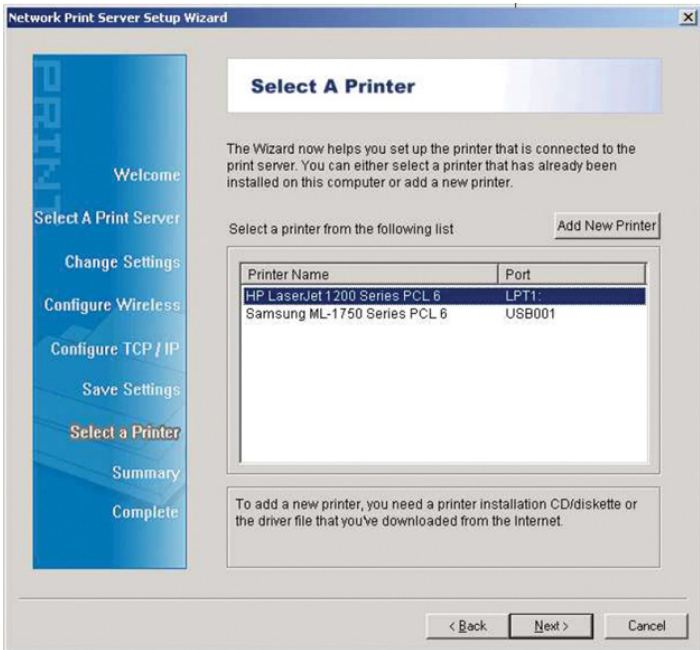


9. Make sure the **Use the following port** radio-button is clicked and select **LPT1: (recommended Printer Port)** from the pull-down list. Then click **Next**.

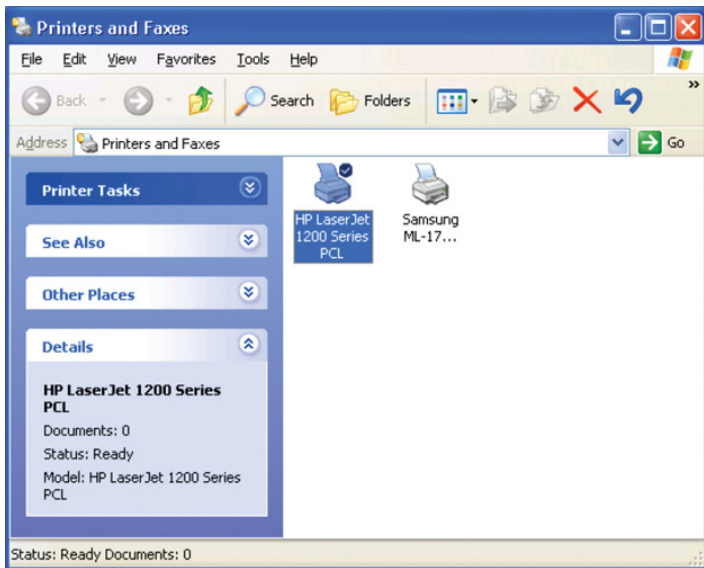


10. Select **Manufacturer** and **Printer** from the lists of printer drivers. Then click **Next**.
11. If you already have the printer's driver installed, you will be asked whether to keep it or to replace it. Click **Next**. Supply a name for the printer and choose whether you want to make it your default printer. Then click **Next**.
12. Then, choose whether you want to share the printer with other network user, print a test page (please select **No**.), etc. Select the appropriate radio-button and click **Next** and **Finish**.
13. In the setup wizard, finish the installation by highlighting the installed printer in the **Select a Printer** list and click **Next**, **Next** -> **Finish**.

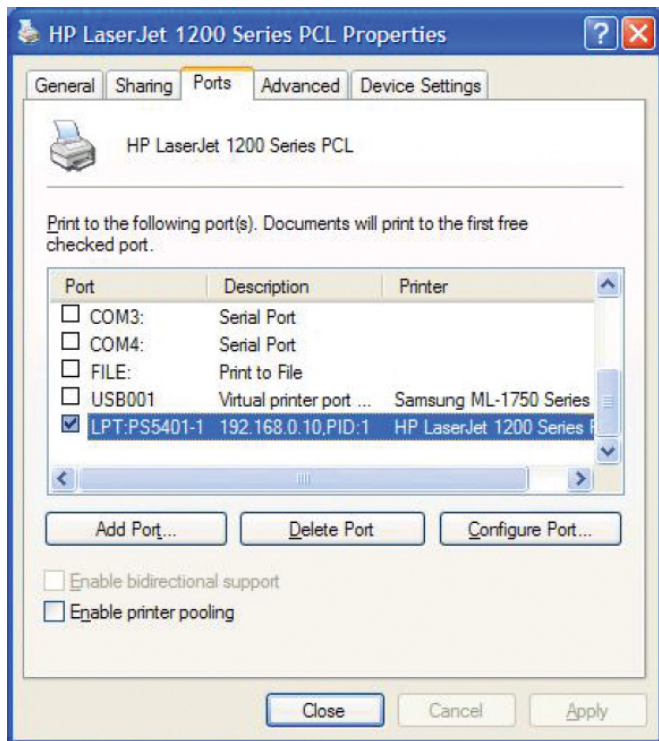




14. Click **Start -> Printers and Faxes** and highlight your newly installed printer.



15. Right-click, select **Properties**, then the **Ports** tab and verify that the print server's port appears.



16. Select the **General** tab and click **Print Test Page** to verify the configuration.

**Note:** If you want to install more print servers, start the setup wizard from your Windows Start menu: **Start -> All Programs -> Network Print Server -> PSWizard** and repeat the installation procedure.

# Technical Support

StarTech.com's lifetime technical support is an integral part of our commitment to provide industry-leading solutions. If you ever need help with your product, visit [www.startech.com/support](http://www.startech.com/support) and access our comprehensive selection of online tools, documentation, and downloads.

For the latest drivers/software, please visit [www.startech.com/downloads](http://www.startech.com/downloads)

## Warranty Information

This product is backed by a two year warranty.

In addition, StarTech.com warrants its products against defects in materials and workmanship for the periods noted, following the initial date of purchase. During this period, the products may be returned for repair, or replacement with equivalent products at our discretion. The warranty covers parts and labor costs only. StarTech.com does not warrant its products from defects or damages arising from misuse, abuse, alteration, or normal wear and tear.

### Limitation of Liability

In no event shall the liability of StarTech.com Ltd. and StarTech.com USA LLP (or their officers, directors, employees or agents) for any damages (whether direct or indirect, special, punitive, incidental, consequential, or otherwise), loss of profits, loss of business, or any pecuniary loss, arising out of or related to the use of the product exceed the actual price paid for the product. Some states do not allow the exclusion or limitation of incidental or consequential damages. If such laws apply, the limitations or exclusions contained in this statement may not apply to you.

Hard-to-find made easy. At StarTech.com, that isn't a slogan. It's a promise.

StarTech.com is your one-stop source for every connectivity part you need. From the latest technology to legacy products — and all the parts that bridge the old and new — we can help you find the parts that connect your solutions.

We make it easy to locate the parts, and we quickly deliver them wherever they need to go. Just talk to one of our tech advisors or visit our website. You'll be connected to the products you need in no time.

Visit [www.startech.com](http://www.startech.com) for complete information on all StarTech.com products and to access exclusive resources and time-saving tools.

*StarTech.com is an ISO 9001 Registered manufacturer of connectivity and technology parts. StarTech.com was founded in 1985 and has operations in the United States, Canada, the United Kingdom and Taiwan servicing a worldwide market.*