

## 2.5in USB 3.0 to SATA HDD Enclosure - 12.5mm

SAT2510B12U3



\*actual product may vary from photos

DE: Bedienungsanleitung - [de.startech.com](http://de.startech.com)

FR: Guide de l'utilisateur - [fr.startech.com](http://fr.startech.com)

ES: Guía del usuario - [es.startech.com](http://es.startech.com)

IT: Guida per l'uso - [it.startech.com](http://it.startech.com)

NL: Gebruiksaanwijzing - [nl.startech.com](http://nl.startech.com)

PT: Guia do usuário - [pt.startech.com](http://pt.startech.com)

For the most up-to-date information, please visit: [www.startech.com](http://www.startech.com)

## FCC Compliance Statement

This equipment has been tested and found to comply with the limits for a Class B digital device, pursuant to part 15 of the FCC Rules. These limits are designed to provide reasonable protection against harmful interference in a residential installation. This equipment generates, uses and can radiate radio frequency energy and, if not installed and used in accordance with the instructions, may cause harmful interference to radio communications. However, there is no guarantee that interference will not occur in a particular installation. If this equipment does cause harmful interference to radio or television reception, which can be determined by turning the equipment off and on, the user is encouraged to try to correct the interference by one or more of the following measures:

- Reorient or relocate the receiving antenna.
- Increase the separation between the equipment and receiver.
- Connect the equipment into an outlet on a circuit different from that to which the receiver is connected.
- Consult the dealer or an experienced radio/TV technician for help.

## Use of Trademarks, Registered Trademarks, and other Protected Names and Symbols

This manual may make reference to trademarks, registered trademarks, and other protected names and/or symbols of third-party companies not related in any way to StarTech.com. Where they occur these references are for illustrative purposes only and do not represent an endorsement of a product or service by StarTech.com, or an endorsement of the product(s) to which this manual applies by the third-party company in question. Regardless of any direct acknowledgement elsewhere in the body of this document, StarTech.com hereby acknowledges that all trademarks, registered trademarks, service marks, and other protected names and/or symbols contained in this manual and related documents are the property of their respective holders.

# Table of Contents

<b>Introduction</b> .....	<b>1</b>
Packaging Contents .....	1
System Requirements.....	1
<b>Installation</b> .....	<b>2</b>
Hardware Installation .....	2
Driver Installation.....	3
<b>Using the Storage Device</b> .....	<b>4</b>
<b>Specifications</b> .....	<b>6</b>
<b>Technical Support</b> .....	<b>7</b>
<b>Warranty Information</b> .....	<b>7</b>

# Introduction

The SAT2510B12U3 2.5in SuperSpeed USB 3.0 External SATA Hard Drive Enclosure lets you connect a 2.5in (SATA, SATA II, SATA III) hard drive or solid state drive (SSD) through USB 3.0. Uniquely designed to be able to fit both 9.5mm and high capacity 12.5mm height hard drives for compatibility with virtually any available SATA hard drive. Supporting data transfer rates of up to 5 Gbps, this external HDD enclosure delivers access to files at lightning fast speeds - 10x that of USB 2.0, and 60% faster than eSATA (SATA II). Plus, the USB 3.0 interface is backward compatible with USB revisions 2.0 and 1.1, so the enclosure can be used with older systems that don't support the newest USB standard (at speeds of 480 Mbps and 12 Mbps, respectively).

## Packaging Contents

- 1 x 2.5in USB 3.0 Hard Drive Enclosure
- 1 x USB 3.0 cable
- 1 x Package of screws
- 1 x Screw Driver
- 1 x Instruction Manual

## System Requirements

- USB enabled computer system with available USB port
- Microsoft® Windows® 2000/XP/Server 2003/Vista/Server 2008 R2/7 (32/64-bit), or Apple® Mac OS® X, or Linux®

\*If used with the Apple Mac OS operating system, this device will function in USB 2.0 mode only as USB 3.0 is not currently supported by Apple.



# Installation



**WARNING!** Hard drives and storage enclosures require careful handling, especially when being transported. If you are not careful with your hard disk, lost data may result. Always handle your hard drive and storage device with caution. Be sure that you are properly grounded by wearing an anti-static strap when handling computer components or discharge yourself of any static electricity build-up by touching a large grounded metal surface (such as the computer case) for several seconds.

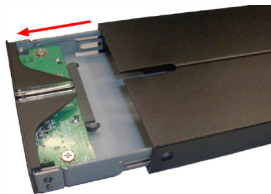
## Hardware Installation

1. Use the provided screw driver to remove the 4 screws from the outside of the enclosure (2 screws on either side).



\*installation photos for reference only

2. Slide the drive tray out from the enclosure. The tray slides out from the USB connector side.



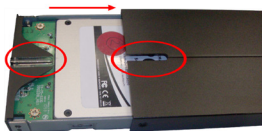
3. Insert the 2.5in SATA drive into the drive tray furthest from the connectors. Slide the SATA drive towards the SATA drive connector until firmly connected.



4. Use the provided drive mounting screws to secure the drive to the tray. Use 2 screws on either side of the SATA drive.



5. Insert the drive tray back into the enclosure. Ensure the LED on the drive tray is aligned with the cutout in the enclosure for the LED.



6. Fasten the screws removed in Step 1 to secure the drive tray to the enclosure.

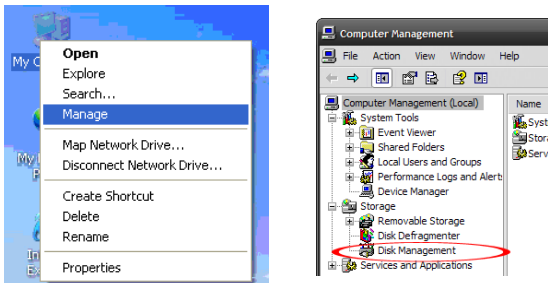
## Driver Installation

No driver installation is required for the supported operating systems, as this hard drive enclosure is natively supported, so the drivers are already installed.

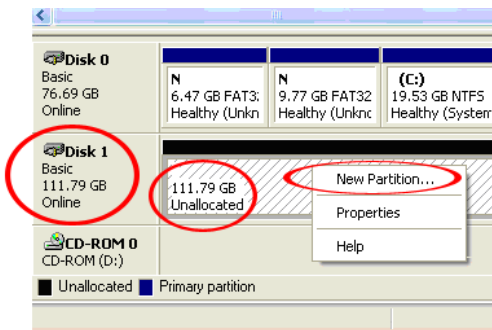
# Using the Storage Device

## Windows 2000/XP/Vista/7

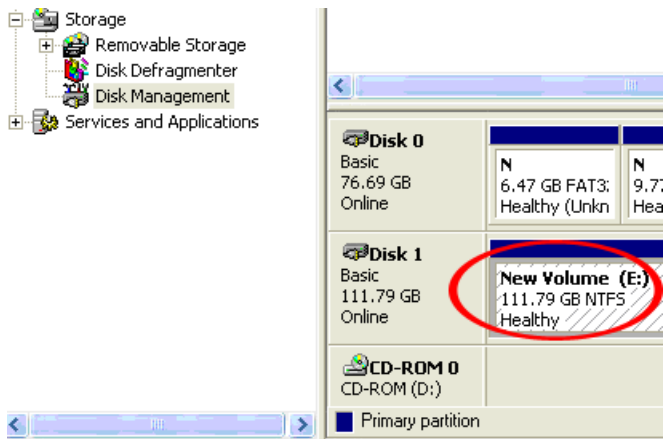
If you are using a brand new hard drive that does not contain any data, then you will first need to prepare the hard drive for use. From the main desktop, right-click on "My Computer" ("Computer" in Vista/7), then select Manage. In the new Computer Management window, select Disk Management from the left window panel.



Locate the Disk that says it is "Unallocated" (check hard drive capacity to confirm it's the correct hard drive) and then right-click in the section that says "Unallocated" and select "New Partition".



The New Partition Wizard will appear. Follow the instructions in the wizard to complete setting up the drive. Once complete, the Disk should show up as “Healthy” with a drive letter assigned (i.e. E:). This drive letter should now appear within My Computer.



If you are installing a hard drive that already has data on it, then after plugging it in, the drive should automatically show up with a drive letter assigned within My Computer.



# Specifications

<b>Drive Bays</b>	1
<b>Host Interface</b>	USB 3.0 revision 1.0
<b>Chipset ID</b>	ASMedia ASM1051
<b>External Connectors</b>	1 x USB 3.0 micro-B female
<b>LEDs</b>	1 x Power/Activity
<b>Maximum Data Transfer Rate</b>	USB: 5 Gbps
<b>Compatible Hard Drives</b>	2.5in SATA hard drives/solid state drives up to 12.5mm in height
<b>Enclosure Material</b>	Aluminum
<b>Power Adapter</b>	USB powered
<b>Operating Temperature</b>	0°C ~ 60°C (32°F ~ 140°F)
<b>Storage Temperature</b>	-20°C ~ 70°C (-4°F ~ 158°F)
<b>Humidity</b>	10% ~ 90% RH
<b>Dimensions</b>	138.0mm x 77.0mm x 17.0mm
<b>Weight</b>	188.5g
<b>Compatible Operating Systems</b>	Windows 2000/XP/Server 2003/Vista/Server 2008 R2/7 (32/64-bit)

# Technical Support

StarTech.com's lifetime technical support is an integral part of our commitment to provide industry-leading solutions. If you ever need help with your product, visit [www.startech.com/support](http://www.startech.com/support) and access our comprehensive selection of online tools, documentation, and downloads.

For the latest drivers/software, please visit [www.startech.com/downloads](http://www.startech.com/downloads)

## Warranty Information

This product is backed by a two year warranty.

In addition, StarTech.com warrants its products against defects in materials and workmanship for the periods noted, following the initial date of purchase. During this period, the products may be returned for repair, or replacement with equivalent products at our discretion. The warranty covers parts and labor costs only. StarTech.com does not warrant its products from defects or damages arising from misuse, abuse, alteration, or normal wear and tear.

### **Limitation of Liability**

In no event shall the liability of StarTech.com Ltd. and StarTech.com USA LLP (or their officers, directors, employees or agents) for any damages (whether direct or indirect, special, punitive, incidental, consequential, or otherwise), loss of profits, loss of business, or any pecuniary loss, arising out of or related to the use of the product exceed the actual price paid for the product. Some states do not allow the exclusion or limitation of incidental or consequential damages. If such laws apply, the limitations or exclusions contained in this statement may not apply to you.

Hard-to-find made easy. At StarTech.com, that isn't a slogan. It's a promise.

StarTech.com is your one-stop source for every connectivity part you need. From the latest technology to legacy products — and all the parts that bridge the old and new — we can help you find the parts that connect your solutions.

We make it easy to locate the parts, and we quickly deliver them wherever they need to go. Just talk to one of our tech advisors or visit our website. You'll be connected to the products you need in no time.

Visit [www.startech.com](http://www.startech.com) for complete information on all StarTech.com products and to access exclusive resources and time-saving tools.

*StarTech.com is an ISO 9001 Registered manufacturer of connectivity and technology parts. StarTech.com was founded in 1985 and has operations in the United States, Canada, the United Kingdom and Taiwan servicing a worldwide market.*