

2.5in SuperSpeed USB 3.0 SATA Hard Drive Enclosure

SAT2510BU3



DE: Bedienungsanleitung - de.startech.com

FR: Guide de l'utilisateur - fr.startech.com

ES: Guía del usuario - es.startech.com

IT: Guida per l'uso - it.startech.com

NL: Gebruiksaanwijzing - nl.startech.com

PT: Guia do usuário - pt.startech.com

FCC Compliance Statement

This equipment has been tested and found to comply with the limits for a Class B digital device, pursuant to part 15 of the FCC Rules. These limits are designed to provide reasonable protection against harmful interference in a residential installation. This equipment generates, uses and can radiate radio frequency energy and, if not installed and used in accordance with the instructions, may cause harmful interference to radio communications. However, there is no guarantee that interference will not occur in a particular installation. If this equipment does cause harmful interference to radio or television reception, which can be determined by turning the equipment off and on, the user is encouraged to try to correct the interference by one or more of the following measures:

Reorient or relocate the receiving antenna.

Increase the separation between the equipment and receiver.

Connect the equipment into an outlet on a circuit different from that to which the receiver is connected.

Consult the dealer or an experienced radio/TV technician for help.

Use of Trademarks, Registered Trademarks, and other Protected Names and Symbols

This manual may make reference to trademarks, registered trademarks, and other protected names and/or symbols of third-party companies not related in any way to StarTech.com. Where they occur these references are for illustrative purposes only and do not represent an endorsement of a product or service by StarTech.com, or an endorsement of the product(s) to which this manual applies by the third-party company in question. Regardless of any direct acknowledgement elsewhere in the body of this document, StarTech.com hereby acknowledges that all trademarks, registered trademarks, service marks, and other protected names and/or symbols contained in this manual and related documents are the property of their respective holders.

Table of Contents

Introduction.....	1
Packaging Contents	1
System Requirements	1
Installation.....	2
Hardware Installation.....	2
Driver Installation	3
Verifying Installation.....	3
Using the Enclosure	4
Specifications.....	6
Technical Support	7
Warranty Information.....	7

Introduction

This StarTech.com SuperSpeed USB 3.0 2.5" enclosure lets you connect a standard 2.5" SATA hard drive through USB 3.0. Supporting data transfer rates of up to 5 Gbps, this external HDD enclosure delivers access to files at lightning fast speeds - 10x that of USB 2.0, and 60% faster than eSATA (SATA revision 2). Backward compatible with USB revisions 2.0 and 1.1 at speeds of 480Mbps and 12 Mbps respectively, so the enclosure can be used with older systems that don't support the newest USB standard.

Packaging Contents

- 1 x SAT2510BU3 enclosure
- 1 x USB 3.0 micro-B to A "Y" cable
- 1 x Package of screws
- 1 x Screw Driver
- 1 x Carrying Pouch
- 1 x Instruction Manual

System Requirements

- USB enabled computer system with available port
- 2.5" SATA hard drive (9.5mm height only) with 7+15 SATA connector
- Microsoft® Windows® 2000/XP/Server 2003/Vista/Server 2008 R2/7 (32/64-bit), or Apple® Mac OS® 10.5/10.6, or Linux®



Installation

WARNING: Hard drives require careful handling, especially when being transported. If you are not careful with your hard disk, lost data may result. Always handle your hard drive and storage device with caution.

Hardware Installation

1. Slide both the top and bottom covers of the enclosure off to reveal the plastic frame of the enclosure.
2. Place a 2.5" SATA hard drive into the tray by angling the hard drive towards the SATA hard drive connector on the circuit board. Slide the hard drive into the connector and then lower the opposite end into the tray.
3. Using the provided screws, fasten the hard drive to the frame of the enclosure from the bottom side.
4. Place both the top and bottom covers back onto the enclosure, making sure to line up the screw holes on the covers with the screw holes on the side of the enclosure. Use the provided screws to fasten the covers to the frame.
5. Using the provided USB 3.0 micro-B cable, connect the enclosure to an available USB port on the computer system. This cable can be connected to any type of USB type A port, not just USB 3.0 ports.

NOTE: A USB 2.0 micro-B cable can also be substituted for the USB3.0 cable, but will not allow for USB 3.0 speeds, if connected to a USB 3.0 port.

NOTE: Only the Primary connector is required to be plugged into the computer system. The Secondary connector may be required if the hard drive cannot draw enough power from a single port (i.e. USB 2.0 ports).

Driver Installation

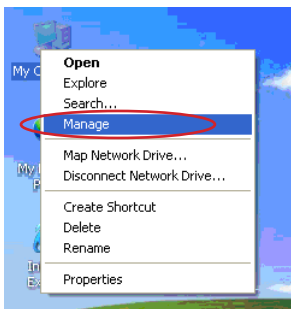
No driver installation is required for these operating systems, as this enclosure is natively supported, so the drivers are already installed.

Verifying Installation

Windows 2000/XP/Server 2003/Vista/7

From the main desktop, right-click on “My Computer” (“Computer” in Vista/7), then select Manage. In the new Computer Management window, select Device Manager from the left window panel.

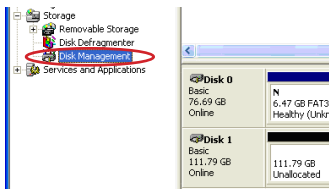
Double-click on the “Disk Drives” option. A new disk drive should be listed under this category. It will typically contain the make/model of the hard drive you have installed in the enclosure.



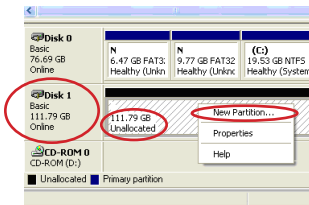
Using the Enclosure

Windows 2000/XP/Vista/7

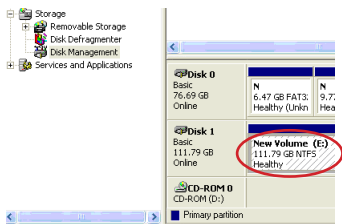
If you are using a brand new hard drive that does not contain any data, then you will first need to prepare the hard drive for use. From the main desktop, right-click on “My Computer” (“Computer” in Vista/7), then select Manage. In the new Computer Management window, select Disk Management from the left window panel.



Locate the Disk that says it is “Unallocated” (check hard drive capacity to confirm it’s the correct hard drive) and then right-click in the section that says “Unallocated” and select “New Partition”.



The New Partition Wizard will appear. Follow the instructions in the wizard to complete setting up the drive. Once complete, the Disk should show up as “Healthy” with a drive letter assigned (i.e. E:). This drive letter should now appear within My Computer.



If you are installing a hard drive that already has data on it, then after plugging it in, the drive should automatically show up with a drive letter assigned within My Computer.

Specifications

Bus Interface	USB revision 3.0
Chipset ID	ASMedia ASM1051
Connectors	1 x USB3.0 micro-B
LEDs	1 x Power/Activity
Compatible Hard Drives	2.5" SATA hard disk/solid state drives, 9.5mm height
Maximum Data Transfer Rate	USB 3.0: 5Gbps
Power Adapter	None
Operating Temperature	0°C ~ 60°C (32°F ~ 140°F)
Storage Temperature	-20°C ~ 70°C (-4°F ~ 158°F)
Humidity	10 ~ 90% RH
Dimensions	113.0mm x 76.0mm x 14.0mm
Weight	63.5g
Compatible Operating Systems	Windows 2000/XP/Server 2003/Vista/ Server 2008 R2/7 (32/64-bit), Mac OS 10.5/10.6, Linux

Technical Support

StarTech.com's lifetime technical support is an integral part of our commitment to provide industry-leading solutions. If you ever need help with your product, visit www.startech.com/ support and access our comprehensive selection of online tools, documentation, and downloads.

Warranty Information

This product is backed by a two year warranty.

In addition, StarTech.com warrants its products against defects in materials and workmanship for the periods noted, following the initial date of purchase. During this period, the products may be returned for repair, or replacement with equivalent products at our discretion. The warranty covers parts and labor costs only. StarTech.com does not warrant its products from defects or damages arising from misuse, abuse, alteration, or normal wear and tear.

Limitation of Liability

In no event shall the liability of StarTech.com Ltd. and StarTech.com USA LLP (or their officers, directors, employees or agents) for any damages (whether direct or indirect, special, punitive, incidental, consequential, or otherwise), loss of profits, loss of business, or any pecuniary loss, arising out of or related to the use of the product exceed the actual price paid for the product. Some states do not allow the exclusion or limitation of incidental or consequential damages. If such laws apply, the limitations or exclusions contained in this statement may not apply to you.

StarTech.com

Hard-to-find **made easy**®

Hard-to-find made easy. At StarTech.com, that isn't a slogan. It's a promise.

StarTech.com is your one-stop source for every connectivity part you need. From the latest technology to legacy products — and all the parts that bridge the old and new — we can help you find the parts that connect your solutions.

We make it easy to locate the parts, and we quickly deliver them wherever they need to go. Just talk to one of our tech advisors or visit our website. You'll be connected to the products you need in no time.

Visit **www.startech.com** for complete information on all StarTech.com products and to access exclusive resources and time-saving tools.

StarTech.com is an ISO 9001 Registered manufacturer of connectivity and technology parts. StarTech.com was founded in 1985 and has operations in the United States, Canada, the United Kingdom and Taiwan servicing a worldwide market.