

2.5" eSATA USB External Hard Drive Enclosure for SATA HDD

SAT2510U2E / SAT2510BU2E



*actual product may vary from photos

DE: Bedienungsanleitung - de.startech.com

FR: Guide de l'utilisateur - fr.startech.com

ES: Guía del usuario - es.startech.com

IT: Guida per l'uso - it.startech.com

NL: Gebruiksaanwijzing - nl.startech.com

PT: Guia do usuário - pt.startech.com

For the most up-to-date information, please visit: www.startech.com

FCC Compliance Statement

This equipment has been tested and found to comply with the limits for a Class B digital device, pursuant to part 15 of the FCC Rules. These limits are designed to provide reasonable protection against harmful interference in a residential installation. This equipment generates, uses and can radiate radio frequency energy and, if not installed and used in accordance with the instructions, may cause harmful interference to radio communications. However, there is no guarantee that interference will not occur in a particular installation. If this equipment does cause harmful interference to radio or television reception, which can be determined by turning the equipment off and on, the user is encouraged to try to correct the interference by one or more of the following measures:

- Reorient or relocate the receiving antenna.
- Increase the separation between the equipment and receiver.
- Connect the equipment into an outlet on a circuit different from that to which the receiver is connected.
- Consult the dealer or an experienced radio/TV technician for help.

Use of Trademarks, Registered Trademarks, and other Protected Names and Symbols

This manual may make reference to trademarks, registered trademarks, and other protected names and/or symbols of third-party companies not related in any way to StarTech.com. Where they occur these references are for illustrative purposes only and do not represent an endorsement of a product or service by StarTech.com, or an endorsement of the product(s) to which this manual applies by the third-party company in question. Regardless of any direct acknowledgement elsewhere in the body of this document, StarTech.com hereby acknowledges that all trademarks, registered trademarks, service marks, and other protected names and/or symbols contained in this manual and related documents are the property of their respective holders.

Table of Contents

Introduction	1
Packaging Contents	1
System Requirements.....	1
Installation	2
Hardware Installation	3
Driver Installation.....	4
Verifying Installation	5
How to Use	5
Specifications	7
Technical Support	8
Warranty Information	8

Introduction

This eSATA/USB External Hard Drive Enclosure transforms virtually any 2.5" SATA (SATA, SATA II, SATA III) hard drive or solid state drive (SSD) into a cost-effective portable storage solution.

Ideal for storing digital multimedia and other demanding applications, the 2.5" SATA hard drive enclosure connects to a host computer using USB 2.0 or eSATA with support for data transfer rates of up to 3Gbps (using eSATA) or 480Mbps (through USB 2.0). Large capacity drives (tested with up to 1TB) can be used to greatly enhance your computer's storage/backup capabilities.

A truly portable solution, the compact hard drive enclosure features lightweight yet durable aluminum construction, as well as a small form factor design that fits perfectly into your pocket or notebook bag when not in use. To eliminate the hassle of having to find a power outlet when you are ready to back up data or load your stored files, the USB/eSATA enclosure offers USB-powered operation, requiring no external power supply.

Packaging Contents

- 1x 2.5" SATA Enclosure
- 1x USB Cable
- 1x USB to DC Cable
- 1x eSATA Cable
- 1x Screws
- 1x Screw Driver
- 1x Travel Pouch
- 1x Instruction Manual

System Requirements

- Available USB 2.0 or eSATA port on computer system
- Microsoft Windows® 2000/XP/Server 2003/Vista (32/64-bit), 7, Mac OS® X, Linux

Installation

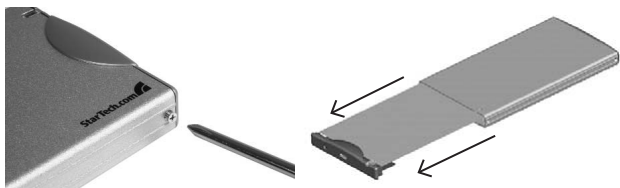


WARNING: Hard drives require careful handling, especially when being transported. If you are not careful with your hard disk, lost data may result. Always handle your hard drive and storage device with caution.

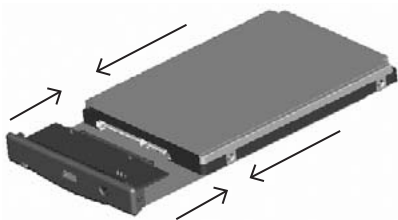
WARNING: Hard drives, like all computer equipment can also be severely damaged by static electricity. Be sure that you are properly grounded before opening your computer case or touching any components. StarTech.com recommends that you wear an anti-static strap when installing any computer equipment. If an antistatic strap is unavailable, discharge yourself of any static electricity build-up by touching a large grounded metal surface (such as the computer case) for several seconds.

Hardware Installation

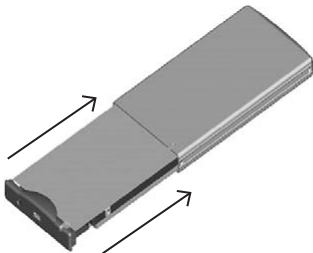
1. Remove the screws from the enclosure, and remove the rear panel cover. Pull the front panel out of the enclosure:



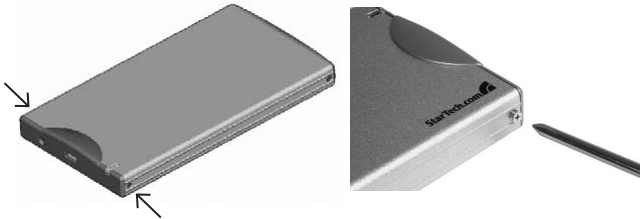
2. Attach the 2.5" SATA hard drive to the connector provided:



3. Insert the front panel (with drive attached) into the rear panel (enclosure).



4. Fasten the front panel (with drive attached) to the rear panel (enclosure), using the screws removed in step #1.



5. To connect the hard drive enclosure to a host computer using USB, simply insert the included USB cable into the USB type Mini B slot provided by the enclosure, and the remaining end into an available USB type A slot on the host computer.
6. To connect the hard drive enclosure to a host computer using eSATA, simply plug the included eSATA cable from the enclosure to the host computer. To provide power to the enclosure, connect the USB to DC cable (provided) to an available USB port on the host computer, and insert the remaining end into the power port located on the hard drive enclosure.

Driver Installation

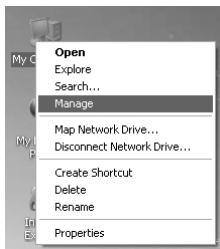
Windows 2000/XP/Server 2003/Vista, 7, Mac OS X, Linux

No driver installation is required for these operating systems, as this enclosure is natively supported, so the drivers are already installed.

Verifying Installation

Windows 2000/XP/Server 2003/Vista

From the main desktop, right-click on “My Computer” (“Computer” in Vista), then select Manage. In the new Computer Management window, select Device Manager from the left window panel.

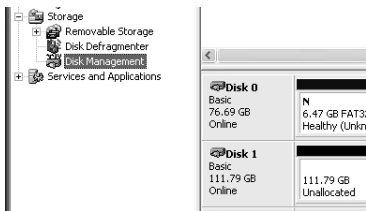


Double-click on the “Disk Drives” option. A new disk drive should be listed under this category. It will typically contain the make/model of the hard drive you have installed in the enclosure.

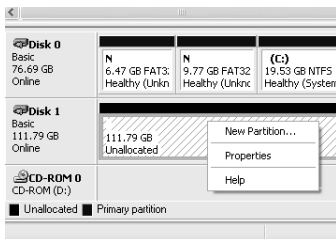
How to Use

Windows 2000/XP/Server 2003/Vista

1. Right-click on My Computer, and select Manage.
2. Select Disk Management, in the left pane. In the right pane, you should notice the new hard drive:



3. Right-click on the Unallocated block, and select New Partition.



4. This will launch the New Partition Wizard. Please follow the instruction provided by the Wizard, to partition the drive for use.
5. Once the partition has been created, the drive installed within the hard drive enclosure will be recognized as a New Volume in Disk Management, as well as in My Computer:



Specifications

Bus Interface	USB 2.0 SATA 3Gb/s
External Connectors	1 x USB mini B 1 x eSATA port 1 x DC power connector
Chipset	JMircon JM20316
LEDs	1 x Power/Activity
Maximum Data Transfer Rate	USB: 480 Mb/s eSATA: 3 Gb/s
Hard Drive Compatibility	2.5" SATA 1.5 and 3 Gb/s hard drives, 9.5mm height
Dimensions	133.0 mm x 72.0 mm x 13.0 mm
Weight	90 g
Compatible Operating Systems	Windows 2000/XP/Server 2003/Vista, 7, Mac OS X, Linux

Technical Support

StarTech.com's lifetime technical support is an integral part of our commitment to provide industry-leading solutions. If you ever need help with your product, visit www.startech.com/support and access our comprehensive selection of online tools, documentation, and downloads.

For the latest drivers/software, please visit www.startech.com/downloads

Warranty Information

This product is backed by a two year warranty.

In addition, StarTech.com warrants its products against defects in materials and workmanship for the periods noted, following the initial date of purchase. During this period, the products may be returned for repair, or replacement with equivalent products at our discretion. The warranty covers parts and labor costs only. StarTech.com does not warrant its products from defects or damages arising from misuse, abuse, alteration, or normal wear and tear.

Limitation of Liability

In no event shall the liability of StarTech.com Ltd. and StarTech.com USA LLP (or their officers, directors, employees or agents) for any damages (whether direct or indirect, special, punitive, incidental, consequential, or otherwise), loss of profits, loss of business, or any pecuniary loss, arising out of or related to the use of the product exceed the actual price paid for the product. Some states do not allow the exclusion or limitation of incidental or consequential damages. If such laws apply, the limitations or exclusions contained in this statement may not apply to you.

Hard-to-find made easy. At StarTech.com, that isn't a slogan. It's a promise.

StarTech.com is your one-stop source for every connectivity part you need. From the latest technology to legacy products — and all the parts that bridge the old and new — we can help you find the parts that connect your solutions.

We make it easy to locate the parts, and we quickly deliver them wherever they need to go. Just talk to one of our tech advisors or visit our website. You'll be connected to the products you need in no time.

Visit www.startech.com for complete information on all StarTech.com products and to access exclusive resources and time-saving tools.

StarTech.com is an ISO 9001 Registered manufacturer of connectivity and technology parts. StarTech.com was founded in 1985 and has operations in the United States, Canada, the United Kingdom and Taiwan servicing a worldwide market.