

## USB 2.0/eSATA to 2.5"/3.5" SATA HDD Dock

SATADOCKU2E  
SATDOCKU2EGB  
SATDOCKU2EEU



\*actual product may vary from photos

DE: Bedienungsanleitung - [de.startech.com](http://de.startech.com)

FR: Guide de l'utilisateur - [fr.startech.com](http://fr.startech.com)

ES: Guía del usuario - [es.startech.com](http://es.startech.com)

IT: Guida per l'uso - [it.startech.com](http://it.startech.com)

NL: Gebruiksaanwijzing - [nl.startech.com](http://nl.startech.com)

PT: Guia do usuário - [pt.startech.com](http://pt.startech.com)

For the most up-to-date information, please visit: [www.startech.com](http://www.startech.com)

## FCC Compliance Statement

This equipment has been tested and found to comply with the limits for a Class B digital device, pursuant to part 15 of the FCC Rules. These limits are designed to provide reasonable protection against harmful interference in a residential installation. This equipment generates, uses and can radiate radio frequency energy and, if not installed and used in accordance with the instructions, may cause harmful interference to radio communications. However, there is no guarantee that interference will not occur in a particular installation. If this equipment does cause harmful interference to radio or television reception, which can be determined by turning the equipment off and on, the user is encouraged to try to correct the interference by one or more of the following measures:

- Reorient or relocate the receiving antenna.
- Increase the separation between the equipment and receiver.
- Connect the equipment into an outlet on a circuit different from that to which the receiver is connected.
- Consult the dealer or an experienced radio/TV technician for help.

## Use of Trademarks, Registered Trademarks, and other Protected Names and Symbols

This manual may make reference to trademarks, registered trademarks, and other protected names and/or symbols of third-party companies not related in any way to StarTech.com. Where they occur these references are for illustrative purposes only and do not represent an endorsement of a product or service by StarTech.com, or an endorsement of the product(s) to which this manual applies by the third-party company in question. Regardless of any direct acknowledgement elsewhere in the body of this document, StarTech.com hereby acknowledges that all trademarks, registered trademarks, service marks, and other protected names and/or symbols contained in this manual and related documents are the property of their respective holders.

# Table of Contents

<b>Introduction .....</b>	<b>1</b>
Features .....	1
Package Contents .....	1
<b>Disk Installation.....</b>	<b>2</b>
<b>SATA Drive Removal.....</b>	<b>2</b>
<b>Preparing the Hard Drives for Use.....</b>	<b>3</b>
<b>Specifications.....</b>	<b>6</b>
<b>Technical Support .....</b>	<b>7</b>
<b>Warranty Information.....</b>	<b>7</b>

# Introduction

This eSATA/USB to SATA External HDD Dock Adapter provides immediate, swappable access to any 2.5in or 3.5in SATA (SATA, SATA II, SATA III) hard drive (HDD) or solid state drive (SSD) - without having to mount the hard drive, or install it in an enclosure!

Simply connect this docking station to a computer using either eSATA or USB 2.0, and it's as simple as inserting your 2.5in or 3.5in SATA hard drive into the dock whenever needed.

A perfect solution for data recovery, drive imaging, and testing centers, or any environment that requires fast access to uninstalled/archived drives, the SATA HDD Dock supports plug and play installation on most operating systems. Plus, the HDD docking station supports data transfer speeds of up to 1.5 Gbps (using eSATA) and 480Mbps (using USB 2.0) between host and dock - ensuring effortless data dumps, backups and hassle-free file transfers. Double the value of this hard drive docking station, using a SATA to IDE hard drive adapter (SAT2IDEADP), which enables you to use any 2.5 or 3.5in IDE hard drive in a SATA hard drive dock slot.

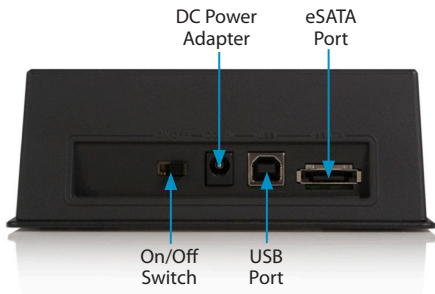
## Features

- Hot Swap Compatible
- Plug and Play support for most operating systems
- Supports both SATA 2.5" and SATA 3.5" hard drives without any adapters
- Supports SATA I/II/III (SATA 150/300/600)

## Package Contents

- 1x SATA hard drive docking station
- 1x USB Cable
- 1x eSATA Cable
- 1x Power Adapter
- 1x Instruction Manual

## Rear View



## Disk Installation

1. Connect the Dock to an available power outlet, using the provided power adapter.
2. Connect the Dock to the (powered) Host Computer, using the provided USB/eSATA cables.
3. Insert the 2.5" or 3.5" SATA/SATA II drive(s) you wish to install, such that the SATA power and data connectors at the back of the drive are properly aligned with the corresponding connectors inside the Dock.



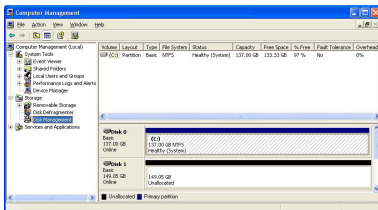
4. Switch the power switch to "ON" position.
5. Once the drive has been inserted, the operating system will detect that it has been connected and automatically update the drivers for proper operation.

## SATA Drive Removal

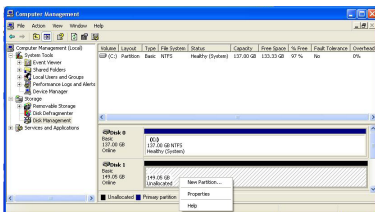
You can remove SATA drives from the docking station by gently pulling them out from the top of the dock.

# Preparing the Hard Drives for Use

1. With the hard drives inserted and the dock powered on, right click on the My Computer icon and select Manage. In the left pane of the Computer Management window, click Disk Management.



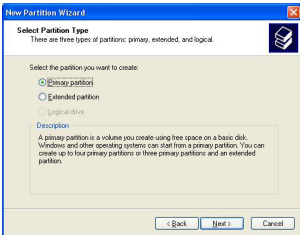
2. In the bottom right pane of the Computer Management window, you should see your drives listed as unallocated. Click on the unallocated drive and select New Partition. The New Partition Wizard will launch.



3. When the New Partition Wizard appears, click Next to continue



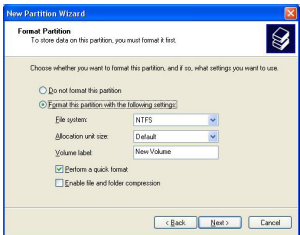
4. Select the partition type you wish to create by clicking on Primary or Extended, as appropriate. When you have made your selection, click Next to continue.



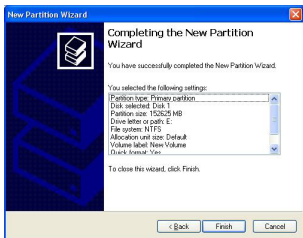
5. Specify the size of the partition you wish to create. You must select a partition size that is between the maximum and minimum sizes (typically the maximum disk space available). Once you have done so, click Next to continue.



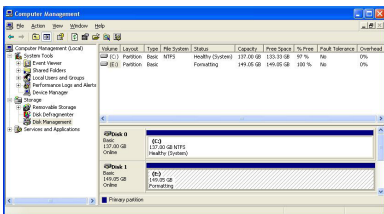
6. Select Format this partition with the following settings. Using the drop down buttons, select the file system, allocation unit size, and volume label you wish to use. Select Perform a Quick Format and click Next to continue.



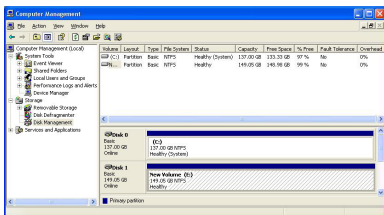
7. A notification window will appear indicating that you have successfully completed the New Partition Wizard. Click Finish to commence the formatting of the drive.



8. The status of the drive, as shown in the Computer Management window, will be updated to reflect the selections you have made. Please wait while the drive is being formatted.

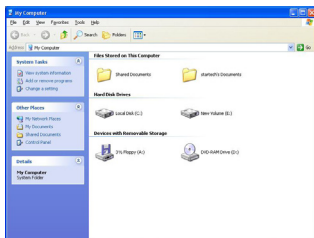


9. Once the drive has been successfully partitioned and formatted, it will display as Healthy.





10. To access your newly partitioned drive(s), open My Computer. Your drive(s) should be displayed below the heading Hard Disk Drives.



## Specifications

Specification	SATADOCKU2E/SATADOCKU2EEU/SATADOCKU2EGB
<b>Internal Connectors</b>	1 x SATA Power 15-Pin Female 1 x SATA Data 7-Pin Female
<b>External Connectors</b>	1 x USB B Female 1 x eSATA Plug Female 1 x DC Power Adapter
<b>Drive Compatibility</b>	2.5/3.5" SATA Hard Drives
<b>OS Support</b>	Windows 98SE/ME/2000/2003/XP/Vista™/7 (32 and 64 bit) x64/x86, Mac OS 10.0 and up, Linux RedHat 9 & Fedora FC4/FC5
<b>Power Adapter</b>	12V 2.0A

# Technical Support

StarTech.com's lifetime technical support is an integral part of our commitment to provide industry-leading solutions. If you ever need help with your product, visit [www.startech.com/support](http://www.startech.com/support) and access our comprehensive selection of online tools, documentation, and downloads.

For the latest drivers/software, please visit [www.startech.com/downloads](http://www.startech.com/downloads)

## Warranty Information

This product is backed by a two year warranty.

In addition, StarTech.com warrants its products against defects in materials and workmanship for the periods noted, following the initial date of purchase. During this period, the products may be returned for repair, or replacement with equivalent products at our discretion. The warranty covers parts and labor costs only. StarTech.com does not warrant its products from defects or damages arising from misuse, abuse, alteration, or normal wear and tear.

### Limitation of Liability

In no event shall the liability of StarTech.com Ltd. and StarTech.com USA LLP (or their officers, directors, employees or agents) for any damages (whether direct or indirect, special, punitive, incidental, consequential, or otherwise), loss of profits, loss of business, or any pecuniary loss, arising out of or related to the use of the product exceed the actual price paid for the product. Some states do not allow the exclusion or limitation of incidental or consequential damages. If such laws apply, the limitations or exclusions contained in this statement may not apply to you.

Hard-to-find made easy. At StarTech.com, that isn't a slogan. It's a promise.

StarTech.com is your one-stop source for every connectivity part you need. From the latest technology to legacy products — and all the parts that bridge the old and new — we can help you find the parts that connect your solutions.

We make it easy to locate the parts, and we quickly deliver them wherever they need to go. Just talk to one of our tech advisors or visit our website. You'll be connected to the products you need in no time.

Visit [www.startech.com](http://www.startech.com) for complete information on all StarTech.com products and to access exclusive resources and time-saving tools.

*StarTech.com is an ISO 9001 Registered manufacturer of connectivity and technology parts. StarTech.com was founded in 1985 and has operations in the United States, Canada, the United Kingdom and Taiwan servicing a worldwide market.*