

USB 2.0 to Gigabit Ethernet Adapter

USB21000S2



*actual product may vary from photos

DE: Bedienungsanleitung - de.startech.com

FR: Guide de l'utilisateur - fr.startech.com

ES: Guía del usuario - es.startech.com

IT: Guida per l'uso - it.startech.com

NL: Gebruiksaanwijzing - nl.startech.com

PT: Guia do usuário - pt.startech.com

For the most up-to-date information, please visit: www.startech.com

FCC Compliance Statement

This equipment has been tested and found to comply with the limits for a Class B digital device, pursuant to part 15 of the FCC Rules. These limits are designed to provide reasonable protection against harmful interference in a residential installation. This equipment generates, uses and can radiate radio frequency energy and, if not installed and used in accordance with the instructions, may cause harmful interference to radio communications. However, there is no guarantee that interference will not occur in a particular installation. If this equipment does cause harmful interference to radio or television reception, which can be determined by turning the equipment off and on, the user is encouraged to try to correct the interference by one or more of the following measures:

- Reorient or relocate the receiving antenna.
- Increase the separation between the equipment and receiver.
- Connect the equipment into an outlet on a circuit different from that to which the receiver is connected.
- Consult the dealer or an experienced radio/TV technician for help.

Use of Trademarks, Registered Trademarks, and other Protected Names and Symbols

This manual may make reference to trademarks, registered trademarks, and other protected names and/or symbols of third-party companies not related in any way to StarTech.com. Where they occur these references are for illustrative purposes only and do not represent an endorsement of a product or service by StarTech.com, or an endorsement of the product(s) to which this manual applies by the third-party company in question. Regardless of any direct acknowledgement elsewhere in the body of this document, StarTech.com hereby acknowledges that all trademarks, registered trademarks, service marks, and other protected names and/or symbols contained in this manual and related documents are the property of their respective holders.

Table of Contents

Introduction	1
Packaging Contents	1
System Requirements.....	1
Installation	2
Driver Installation.....	2
Hardware Installation	2
Verifying Installation.....	3
Specifications	4
Technical Support	5
Warranty Information	5

Introduction

The USB21000S2 USB 2.0 to Gigabit Ethernet Adapter adds a single RJ45 Ethernet port to a USB-enabled computer system, with support for link speeds of 10/ 100/ 1000 Mbps.

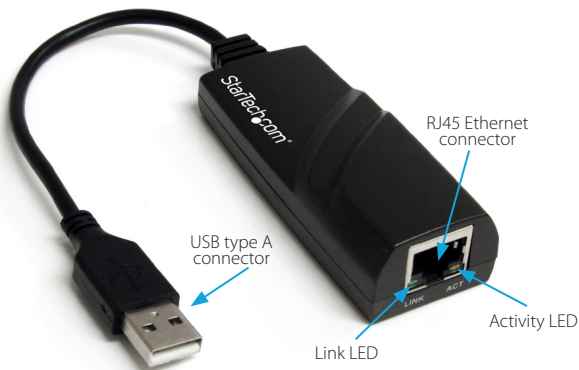
Backward compatible with older USB 1.x computer systems, this compact and portable USB network adapter offers an ideal desktop replacement network adapter or laptop accessory. With support for features such as Jumbo Frames, VLAN tagging and Wake on LAN (WOL), the adapter is suitable for home and business users alike.

Packaging Contents

- 1 x USB Gigabit Ethernet Adapter
- 1 x Driver CD
- 1 x Instruction Manual

System Requirements

- USB enabled computer with available USB port
- Microsoft Windows XP(32/64-bit)/ Server 2003(32/64-bit)/ Server 2008 R2/ Vista(32/64-bit)/ 7(32/64-bit)/ 8 (32/64-bit), Mac OS 10.6/ 10.7/ 10.8 or Linux.



Installation

Driver Installation

Windows XP/ Server 2003/ Server 2008 R2/ Vista/ 7/ 8

1. Upon starting Windows, insert the included Driver CD into the computer's CD/DVD drive.
2. AutoPlay may automatically launch and display all of the folders on the CD or give you the option to view files and folders on the CD. If not, open "My Computer" and double-click on the CD/DVD drive.
3. Navigate to the folder for your operating system version (i.e. Windows). Double-click the file "Setup.exe".
4. This will launch the driver Installation wizard. Continue through the wizard and once complete, driver will be installed.
5. Reboot the computer and the network adapter will be ready for use.

Mac OS 10.6/ 10.7/ 10.8

1. Upon starting Mac OS, insert the included Driver CD into the computer's CD/DVD drive.
2. Open a Finder window, and click on the CD icon in the Sidebar.
3. Navigate to the folder for your operating system version (i.e. Mac). Double-click the driver installation file (*.pkg).
4. This should launch the driver Installation wizard. Continue through the wizard and once complete, all the necessary drivers will be installed.
5. Reboot the computer to complete the installation and check the "Network" preferences in "System Preferences" to verify and configure the network adapter.

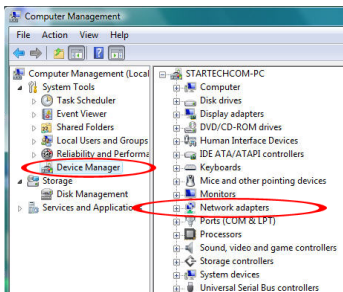
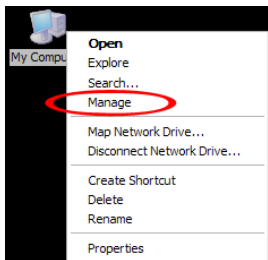
Hardware Installation

1. After the drivers have been successfully installed, connect the adapter to an available USB port on the computer system.
2. The adapter will be automatically recognized and the drivers installed.
3. Once the operating system has completed installing the drivers, a new networking device should now be available for use.
4. Connect an RJ45 terminated Ethernet cable to the adapter and the green "LINK" LED should light up to indicate a connection to the network is detected.
5. Make any configurations changes necessary for your network, though the normal methods offered by your operating system.

Verifying Installation

Windows XP/ Server 2003/ Server 2008 R2/ Vista/ 7/ 8

From the main desktop, right-click on “My Computer” (“Computer” in Vista/7), then select Manage. In the new Computer Management window, select Device Manager from the left window panel.



In the Device Manager, under the Network Adapters category, you should see a new USB networking device listed.

Specifications

Host Interface	USB 2.0
Chipset ID	SMSC LAN7500
Connectors	1 x USB type A male 1 x RJ45 Ethernet female
LEDs	1 x Gigabit Link 1 x Activity
Supported Standards	IEEE 802.3/ 802.3u/ 802.3ab
Link Speeds	10/ 100/ 1000 Mbps
Auto MDIX Support	Yes
Full Duplex Support	Yes
Enclosure Material	Plastic
Operating Temperature	0°C ~ 70°C (32°F ~ 158°F)
Storage Temperature	-20°C ~ 75°C (-4°F ~ 168°F)
Humidity	5% ~ 95% RH
Dimensions	270.0mm x 30.0mm x 20.0mm
Weight	39g
Compatible Operating Systems	Windows XP(32/64-bit)/ Server 2003(32/64-bit)/ Server 2008 R2/ Vista(32/64-bit)/ 7(32/64-bit)/ 8 (32/64-bit), Mac OS 10.6/ 10.7/ 10.8 or Linux.

Technical Support

StarTech.com's lifetime technical support is an integral part of our commitment to provide industry-leading solutions. If you ever need help with your product, visit www.startech.com/support and access our comprehensive selection of online tools, documentation, and downloads.

For the latest drivers/software, please visit www.startech.com/downloads

Warranty Information

This product is backed by a two year warranty.

In addition, StarTech.com warrants its products against defects in materials and workmanship for the periods noted, following the initial date of purchase. During this period, the products may be returned for repair, or replacement with equivalent products at our discretion. The warranty covers parts and labor costs only. StarTech.com does not warrant its products from defects or damages arising from misuse, abuse, alteration, or normal wear and tear.

Limitation of Liability

In no event shall the liability of StarTech.com Ltd. and StarTech.com USA LLP (or their officers, directors, employees or agents) for any damages (whether direct or indirect, special, punitive, incidental, consequential, or otherwise), loss of profits, loss of business, or any pecuniary loss, arising out of or related to the use of the product exceed the actual price paid for the product. Some states do not allow the exclusion or limitation of incidental or consequential damages. If such laws apply, the limitations or exclusions contained in this statement may not apply to you.

Hard-to-find made easy. At StarTech.com, that isn't a slogan. It's a promise.

StarTech.com is your one-stop source for every connectivity part you need. From the latest technology to legacy products — and all the parts that bridge the old and new — we can help you find the parts that connect your solutions.

We make it easy to locate the parts, and we quickly deliver them wherever they need to go. Just talk to one of our tech advisors or visit our website. You'll be connected to the products you need in no time.

Visit www.startech.com for complete information on all StarTech.com products and to access exclusive resources and time-saving tools.

StarTech.com is an ISO 9001 Registered manufacturer of connectivity and technology parts. StarTech.com was founded in 1985 and has operations in the United States, Canada, the United Kingdom and Taiwan servicing a worldwide market.