

**USB2SATA25**  
**USB2SATA25GB**  
**USB2SATA25EU**

**Instruction Manual**

# **USB 2.0 to SATA Adapter Cable with Power Adapter**

**StarTech.com**   
*Making hard-to-find easy!®*

## **FCC Compliance Statement**

This equipment has been tested and found to comply with the limits for a Class B digital device, pursuant to part 15 of the FCC Rules. These limits are designed to provide reasonable protection against harmful interference in a residential installation. This equipment generates, uses and can radiate radio frequency energy and, if not installed and used in accordance with the instructions, may cause harmful interference to radio communications. However, there is no guarantee that interference will not occur in a particular installation. If this equipment does cause harmful interference to radio or television reception, which can be determined by turning the equipment off and on, the user is encouraged to try to correct the interference by one or more of the following measures:

- Reorient or relocate the receiving antenna.
- Increase the separation between the equipment and receiver.
- Connect the equipment into an outlet on a circuit different from that to which the receiver is connected.
- Consult the dealer or an experienced radio/TV technician for help.

## **Use of Trademarks, Registered Trademarks, and other Protected Names and Symbols**

This manual may make reference to trademarks, registered trademarks, and other protected names and/or symbols of third-party companies not related in any way to StarTech.com. Where they occur these references are for illustrative purposes only and do not represent an endorsement of a product or service by StarTech.com, or an endorsement of the product(s) to which this manual applies by the third-party company in question. Regardless of any direct acknowledgement elsewhere in the body of this document, StarTech.com hereby acknowledges that all trademarks, registered trademarks, service marks, and other protected names and/or symbols contained in this manual and related documents are the property of their respective holders.

# Table of Contents

<b>Introduction</b> .....	<b>1</b>
Packaging Contents.....	1
System Requirements .....	1
<b>Installation</b> .....	<b>1</b>
Hardware Installation.....	1
Driver Installation.....	3
Verifying Installation in Windows® 2000/XP/Vista .....	3
Backup Software Installation .....	4
<b>Specifications</b> .....	<b>5</b>
<b>Technical Support</b> .....	<b>6</b>
<b>Warranty Information</b> .....	<b>6</b>

# Introduction

## Packaging Contents

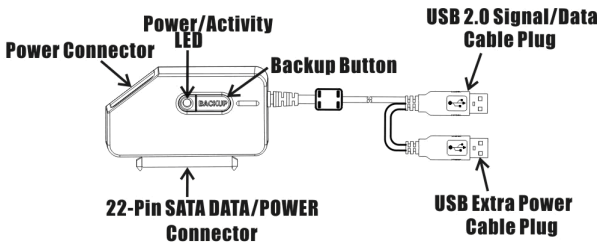
- 1 x USB2SATA25/GB/EU adapter
- 1 x Power Adapter and cord
- 1 x Software CD
- 1 x User Manual

## System Requirements

- IBM compatible Pentium-233 MHz or faster PC & MAC
- Available USB port
- Microsoft Windows® 2000/XP/Vista, Mac OS® 9.2.2 - 10.5

# Installation

## Hardware Installation

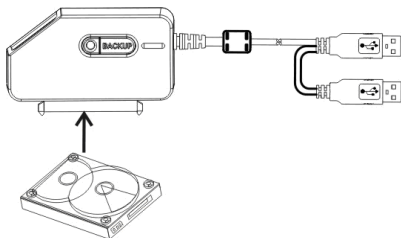


**Power/Activity LED:** The LED remains lit to show that the drive is on, and blinks to indicate drive activity.

**Backup Button:** Press the Backup Button to launch the PC Clone EX application

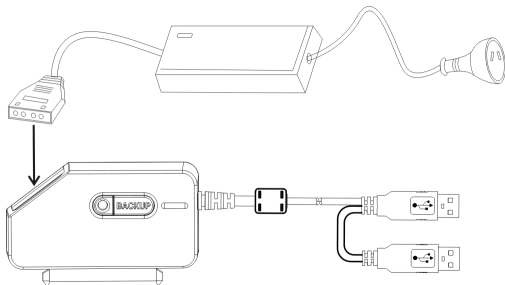
### Connecting a 2.5" Hard Drive

1. Connect your 2.5" SATA HDD to the SATA connector on the adapter.
2. Connect the attached USB Data cable to the USB port on your computer.
3. **Optional:** Connect the USB Extra Power cable to another USB port.



### Connecting a 3.5" Hard Drive or 5.25" Optical Drive

1. Connect your 3.5" SATA HDD or 5.25" DVD/optical driver to the SATA connector on the adapter.
2. Connect the adapter with the provided power adapter and then connect the power adapter to a working electrical outlet.
3. Connect the attached USB cable to the USB port on your computer.



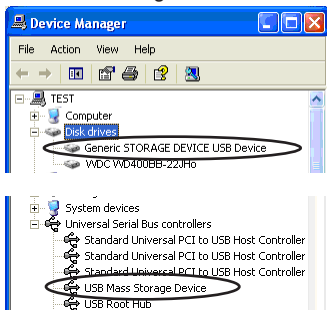
## Driver Installation

### Windows® 2000/XP/Vista, Mac OS® 9.2.2 - 10.5

No driver installation is required for these operating systems, as this Adapter is natively supported, so the drivers are already installed.

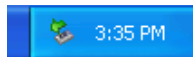
## Verifying Installation in Windows® 2000/XP/Vista

Open Device Manager by right-clicking on My Computer and selecting Manage, then select Device Manager from the left window pane.



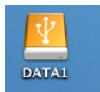
\* The screenshot is an example from Windows XP. Actual disk drive string varies according to your hard disk brand and model.

An USB device monitor icon will appear on the notification area of the taskbar.



**Mac OS®:** To verify your installation, open the Disk Utility. Your hard disk should be displayed.

The attached hard drive will be mounted to the desktop and appears as a removable media device.



## Backup Software Installation

1. To install the PC Clone EX utility, please locate the installation folder “JM20329” on the software CD and then double click the setup.exe file.
2. Follow the on-screen installation to complete the installation.
3. “PC Clone EX” icon will displays in the notification area after setup, you can double click the icon or press the right key of the mouse to execute PC Clone EX.



For more information about the PC Clone EX utility, right click the “PC Clone EX” icon in the notification area, then select the “Help” option in the pop-up menu.

# Specifications

<b>Bus Interface</b>	USB 2.0 (backward compatible with USB 1.x)
<b>Connectors</b>	SATA: 7+15 Pin male USB: USB 2.0 Type A DC IN: LP4 molex male
<b>Chipset</b>	JMicron JM20329
<b>Drive Compatibility</b>	2.5"/3.5" SATA 1.5 & 3.0 Gb/s hard drive 5.25" SATA 1.5 & 3.0 Gb/s optical drive
<b>Maximum Data Transfer Rate</b>	480Mbps
<b>Operating Temperature</b>	10-55°C
<b>Storage Temperature</b>	0~70°C
<b>Dimensions</b>	63.0mm x 40.0mm x 12.0mm
<b>Supported Operating Systems</b>	Windows® 2000/XP/Vista, Mac OS® 9.2.2 - 10.5

## Technical Support

StarTech.com's lifetime technical support is an integral part of our commitment to provide industry-leading solutions. If you ever need help with your product, visit [www.startech.com/support](http://www.startech.com/support) and access our comprehensive selection of online tools, documentation, and downloads.

## Warranty Information

This product is backed by a one year warranty.

In addition, StarTech.com warrants its products against defects in materials and workmanship for the periods noted, following the initial date of purchase. During this period, the products may be returned for repair, or replacement with equivalent products at our discretion. The warranty covers parts and labor costs only. StarTech.com does not warrant its products from defects or damages arising from misuse, abuse, alteration, or normal wear and tear.

### Limitation of Liability

In no event shall the liability of StarTech.com Ltd. and StarTech.com USA LLP (or their officers, directors, employees or agents) for any damages (whether direct or indirect, special, punitive, incidental, consequential, or otherwise), loss of profits, loss of business, or any pecuniary loss, arising out of or related to the use of the product exceed the actual price paid for the product. Some states do not allow the exclusion or limitation of incidental or consequential damages. If such laws apply, the limitations or exclusions contained in this statement may not apply to you.



StarTech.com has been making “hard-to-find easy” since 1985, providing high quality solutions to a diverse IT and A/V customer base that spans many channels, including government, education and industrial facilities to name just a few. We offer an unmatched selection of computer parts, cables, A/V products, KVM and Server Management solutions, serving a worldwide market through our locations in the United States, Canada, the United Kingdom and Taiwan.

Visit **[www.startech.com](http://www.startech.com)** today for complete information about all our products and to access exclusive interactive tools such as the Cable Finder, Parts Finder and the KVM Reference Guide.