

# USB TV Tuner

External USB 2.0 TV Tuner with Remote Control

**USB2TVTUNER**

**Instruction Manual**



Actual product may vary from photo

**StarTech.com**   
*Making hard-to-find easy!*

## **FCC Compliance Statement**

This equipment has been tested and found to comply with the limits for a Class B digital device, pursuant to part 15 of the FCC Rules. These limits are designed to provide reasonable protection against harmful interference in a residential installation. This equipment generates, uses and can radiate radio frequency energy and, if not installed and used in accordance with the instructions, may cause harmful interference to radio communications. However, there is no guarantee that interference will not occur in a particular installation. If this equipment does cause harmful interference to radio or television reception, which can be determined by turning the equipment off and on, the user is encouraged to try to correct the interference by one or more of the following measures:

- Reorient or relocate the receiving antenna.
- Increase the separation between the equipment and receiver.
- Connect the equipment into an outlet on a circuit different from that to which the receiver is connected.
- Consult the dealer or an experienced radio/TV technician for help.

## **Use of Trademarks, Registered Trademarks, and other Protected Names and Symbols**

This manual may make reference to trademarks, registered trademarks, and other protected names and/or symbols of third-party companies not related in any way to StarTech.com. Where they occur these references are for illustrative purposes only and do not represent an endorsement of a product or service by StarTech.com, or an endorsement of the product(s) to which this manual applies by the third-party company in question. Regardless of any direct acknowledgement elsewhere in the body of this document, StarTech.com hereby acknowledges that all trademarks, registered trademarks, service marks, and other protected names and/or symbols contained in this manual and related documents are the property of their respective holders.

# Table of Contents

<b>Introduction</b> .....	<b>1</b>
<b>Before You Begin</b> .....	<b>1</b>
System Requirements .....	1
Package Contents .....	1
<b>Installation</b> .....	<b>2</b>
Windows 2000/XP users .....	2
Application Software Installation .....	2
Driver Installation .....	6
Windows Vista users .....	7
Application Software Installation .....	7
Driver Installation .....	8
Connecting the TV Tuner to Your Computer .....	10
<b>Using the TV Tuner Software</b> .....	<b>11</b>
General Settings .....	12
Encoder Properties .....	12
Color .....	12
TV Tuner .....	13
<b>Using the Infrared Remote Control</b> .....	<b>14</b>
<b>Troubleshooting Guide</b> .....	<b>15</b>
<b>Accessory Products from StarTech.com</b> .....	<b>16</b>
<b>Technical Support</b> .....	<b>17</b>
<b>Warranty Information</b> .....	<b>17</b>

## Introduction

Thank you for purchasing a StarTech.com External USB 2.0 TV Tuner. This product allows you to watch a satellite or cable TV signal on your computer monitor, and offers timeshifting and video capture/recording capabilities, as well as a host of other features that can help you turn your PC into the ultimate multimedia environment. Plus, USB2TVTUNER includes an infrared remote control and an innovative on-screen remote, providing complete, convenient control of options and features that will change the way you watch TV.

## Features

- Includes an external infrared remote control for easy channel switching
- Intuitive, on-screen menu system for previewing and programming channels, screen captures, parental channel lockout, and more
- Supports inputs from auxiliary A/V devices such as DVD players, VCRs, and game consoles
- Supports multiple video file output formats and resolutions, and includes VideoWorks video authoring software

## Before You Begin

### System Requirements

- A PC with an available USB 2.0 port
- OS Requirements: Microsoft Windows 2000, XP (32-bit and 64-bit editions), XP Media Center Edition, Vista (32-bit and 64-bit editions)
- Windows 2000 computers must have a sound card with a "line in" connector
- Optional: CD/DVD-ROM, or other compatible optical drive (for software installation) or an active Internet connection (software download)

### Package Contents

- 1 x USB 2.0 TV Tuner
- 1 x USB (A-B Male) Cable
- 1 x 3.5 mm male-to-male headphone audio cable
- 2 x Installation CDs (TV Tuner and VideoWorks)
- 1 x Instruction Manual

## Installation



**Warning!** Do **not** connect the USB 2.0 TV Tuner to the computer, prior to installing the accompanying software package. Please note that the software must be present, in order for the operating system to properly detect and make use of the USB2TVTUNER.



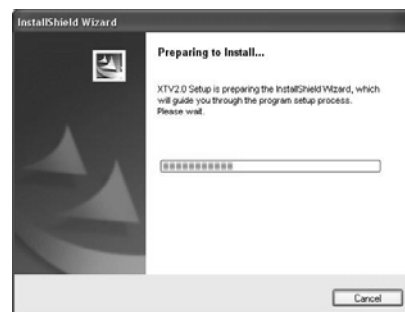
**Please note:** Installation of the USB2TVTUNER External USB 2.0 TV Tuner requires that two separate components be installed - the XTV2.0 Multimedia Application software and the device driver files. To ensure successful installation and operation, please follow the necessary steps in sequence, as indicated below.

### Windows 2000/XP users

#### Application Software Installation

1. With the host computer in a powered state, ensure that the **Multimedia Installation Kit CD** (included with USB2TVTUNER) is in your CD/DVD-ROM drive.
2.
  - a) Double-click on **My Computer**
  - b) Open the contents of the CD by double-clicking on the icon that represents your CD/DVD-ROM drive.
  - c) Open the **NetXTV20** folder.
  - d) Open the **AP Software** folder.
  - e) Open the **XTV20** folder.
  - f) Double-click on the **Setup.exe** file, to launch the installation program.
3. When you are prompted, please choose the appropriate language for installation, and click **Next**.

4. You will then be notified that XTV2.0 is preparing to install the necessary software:

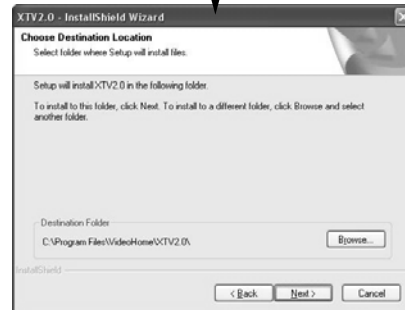


## Instruction Manual

- On the screen that follows, you will be asked to **Select the setup type that best suits your needs**. Please select the appropriate location from the list provided, and click on the **Set** button.



- To install the application in the default folder, click on **Next** to continue. (Optional: If you wish to install the application in a location other than that specified by default, click on the **Browse** button, select the desired location for the files to be copied, then click on the **Next** button.)



- Windows Media Format 9 Series Runtime Setup** will begin. Click on **Yes** to continue.



- The **Windows Media Format 9 Series Runtime Setup** End User License Agreement will appear. If you agree to the terms of the agreement, click on **Yes** to continue.
- You will be notified that **Windows Media Format 9 Series Runtime Setup** has completed. Click on **OK** to continue.

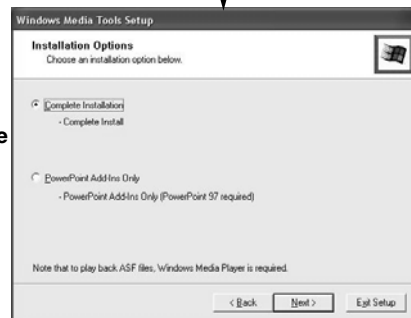
## Instruction Manual

10. When the **Windows Media Tools Setup** window appears, click on **Yes** to continue, if you agree to the terms of the license agreement.

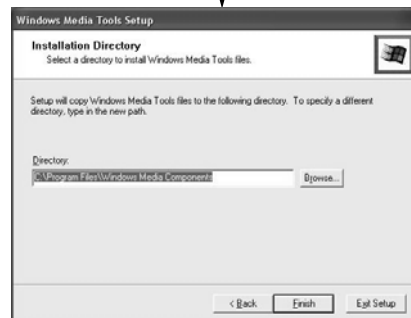
11. The **Windows Media Tools** welcome page will appear. Click **Next** to continue.



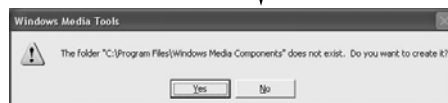
12. At the **Installation Options** window, select **Complete Installation** and click on **Next** to continue.



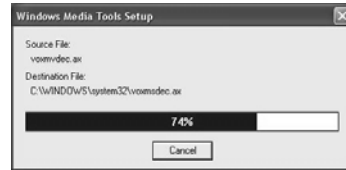
13. To install the application in the default folder, click on **Finish**. (Optional: If you wish to install the application in a location other than that specified by default, click on the **Browse** button, select the desired location for the files to be copied, then click on the **Finish** button.)



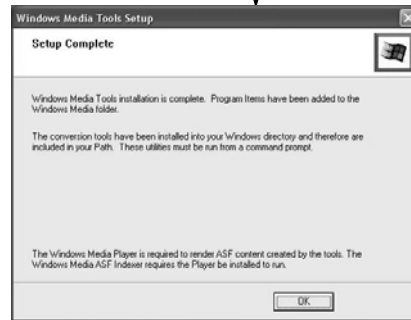
14. You may be asked if you wish to create a folder for **Windows Media Components**. Please select **Yes**.



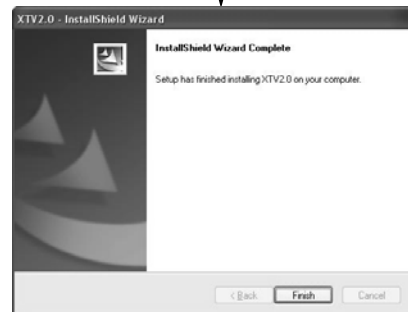
15. Please wait while **Windows Media Tools Setup** copies the necessary files...



16. Once Windows Media Tools Setup has completed, click on **OK** to continue.



17. The InstallShield Wizard is now finished installing the XTV2.0 application on your computer. Please click on **Finish**.



18. You will be prompted to restart the computer, for the changes to take effect. Please select **Yes, I want to restart my computer now** and click **OK**.

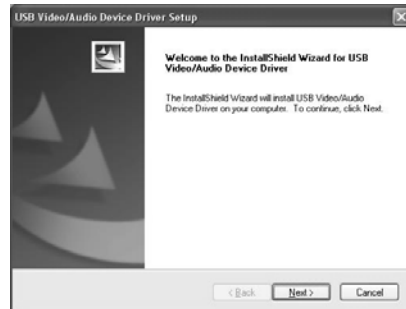
Once the computer has rebooted, you can proceed to install the necessary drivers as detailed in the following section.





## Driver Installation

1. Ensure the **Multimedia Installation Kit** CD is present in your CD/DVD-ROM drive.
2.
  - a) Double-click on **My Computer**
  - b) Open the contents of the CD by double-clicking on the icon that represents your CD/DVD-ROM drive.
  - c) Open the **NetXTV20** folder.
  - d) Open the **Driver** folder.
  - e) Double-click on the **Setup.exe** file, to launch the installation program. When the **Welcome** screen appears, click on **Next** to continue.



3. Allow the installation program to complete. Once the InstallShield Wizard is complete, please click on **Finish**.

Following this, you will be asked if you wish to restart your computer. Please select **Yes, I want to restart my computer now**, and click on **OK**. Once the computer has fully rebooted, please advance to the steps outlined in the section entitled **Connecting the TV Tuner to Your Computer**.



## Windows Vista users

### Application Software Installation

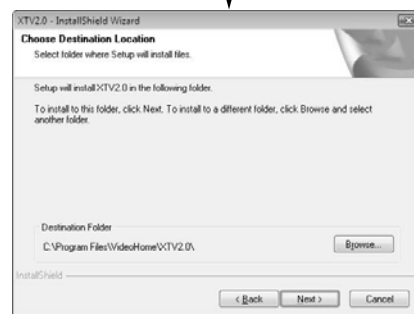
1. With the host computer in a powered state, ensure that the **Multimedia Installation Kit CD** (included with USB2TVTUNER) is in your CD/DVD-ROM drive.
2.
  - a) Double-click on **Computer** (on the desktop)
  - b) Open the contents of the CD by double-clicking on the icon that represents your CD/DVD-ROM drive.
  - c) Open the **NetXTV20** folder.
  - d) Open the **AP Software** folder.
  - e) Open the **XTV20** folder.
  - f) Double-click on the **Setup.exe** file, to launch the installation program.
3. You will be asked to select the language under which the software will operate. Please make the appropriate selection, and click **OK**.

4. Windows Vista will then prepare to install the necessary software, following which you will be able to select your geographic location. Please make the appropriate selection, and click on **Next**.

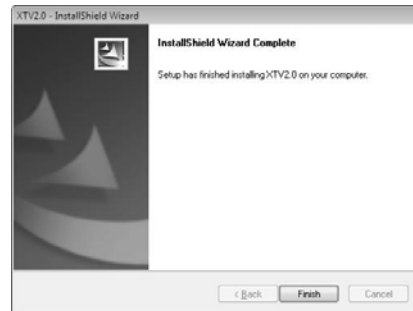


5. You will then be given the option to specify the location into which the software will be installed. To install in the default location, please click on **Next**.

*Optional:* If you wish to install the software in an alternate location, please click on **Browse** and specify the location of your choice, and click **Next** to continue.



6. The installation program will then perform a final configuration of the software. Once this has completed, please click on **Finish**.



7. You will then be asked to restart the computer. Please select **Yes, I want to restart my computer now**, and click on **OK**. Once the computer has restarted, please proceed to **Driver Installation**.



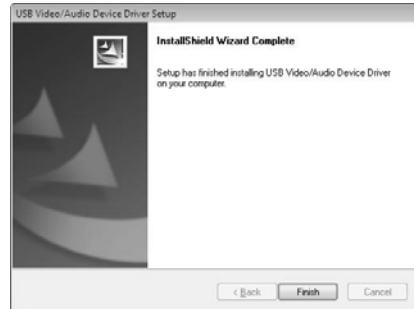
### Driver Installation

1. Ensure the **Multimedia Installation Kit** CD is present in your CD/DVD-ROM drive.
2.
  - a) Double-click on **Computer**
  - b) Open the contents of the CD by double-clicking on the icon that represents your CD/DVD-ROM drive.
  - c) Open the **NetXTV20** folder.
  - d) Open the **Driver** folder.
  - e) Double-click on the **Setup.exe** file, to launch the installation program.

3. The InstallShield Wizard will then welcome you. Click **Next** to continue.



4. Once the InstallShield Wizard is complete, please click on **Finish**.

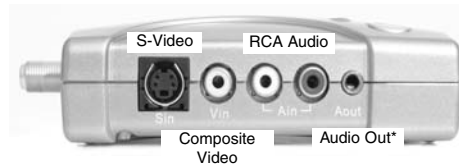


5. When you are prompted to restart the computer, please select **Yes, I want to restart my computer now**, and click on **OK**. Once the computer has fully rebooted, please advance to the steps outlined in the section entitled **Connecting the TV Tuner to Your Computer**.



## Connecting the TV Tuner to Your Computer

**NOTE:** If at any time Windows prompts you to restart the computer when detecting the TV tuner and configuring the drivers, do not restart. Allow Windows to find all drivers, and then restart the computer manually.



\* Required for Windows 2000 installations only

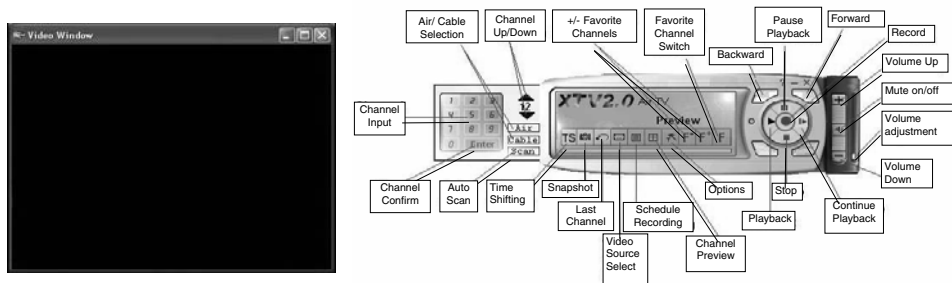
1. Using a length of television coaxial cable (not provided), connect the port marked **TV** on the TV tuner to the connector on your wall jack or antenna.
2. (Optional) You can also connect a DVD player, VCR, or game console to the TV tuner using the S-Video and RCA audio/video connectors. If you would like to take advantage of this feature, connect the device using the existing cables to the **Sin** (or **Vin**, if using composite RCA video) and the **Ain** RCA audio connectors.
3. **For Windows 2000 users:** Since Windows 2000 does not support USB audio for this product, connect the 3.5mm male-to-male headphone audio cable (provided) to the **Aout** connector on the TV tuner. Connect the opposite end to the computer's sound card using the connector marked **Line In** (or similar). Consult your computer's documentation for assistance, if necessary. Windows XP users do not need to complete this step.
4. Connect the "D" shaped end of the USB 2.0 cable (provided) into the port marked **USB** on the TV tuner. Connect the opposite end to an available USB 2.0 port on the computer. (USB 1.1 ports will not work with the TV tuner.) You may also connect the tuner to a USB 2.0 hub if it has a power adapter. Once you connect the USB cable to the computer, Windows will detect and configure the TV tuner. When that process is complete, you can use the product. The green light on the TV tuner will be lit when it is powered and configured, and the TV tuner software is loaded.



**Note on usage:** If you are connecting the TV tuner to a digital satellite receiver or digital cable set-top box, the TV tuner will only "see" the channel that the receiver/decoder is configured to use, normally channel 3 or 4. (This is because these products provide their own tuning function.) Like viewing channels on a regular TV with these types of product, you must change channels on the receiver/decoder and leave the TV tuner set to the appropriate channel. Therefore, any saved recording events in the TV tuner software will be on the same channel, and you must ensure the receiver/decoder is set to the correct channel when the recording session is scheduled to begin.

## Using the TV Tuner Software

1. Double-click on the **XTV2.0** icon, located on the desktop. This will prompt the following to be displayed:



2. To customize the **Video Window**, move the mouse pointer over the video window and right-click to get the following setup options: **320x240**, **640x480**, **720x480**, **720x576**, **full screen** and **Always On Top**. Select the desired resolution, as well as whether or not you want the **Video Window** to remain on top of all other applications.

You can also switch to full screen operation by double-clicking the **Video Window**. Double-click on the display area again to return to the initial view.

3. **Channel Input** : After you select the channel number, click **Enter** to confirm the Channel input
4. **Auto Scan** : Scan all TV Channels
5. **Time Shifting** : Clicking on **Time Shifting** will pause the display, but will keep recording. When you click the **Continue Playback** button, it will playback from the pause time point. To stop video playback, click the **Stop** button.
6. **Snapshot** : When selected, the **Snapshot** function will capture the image that is displayed within the Video Window.
7. **Video Source Select** : TV Tuner/Composite video/S-Video selection
8. **Schedule Capture** : You can choose **One Time**, **Several Days** or **Every Week** scheduled recording. After you edit the schedule, please click **Add** to put the selection into your list, followed by **Save**, before you quit.
9. **Channel Preview** : Allows you to preview the available channels. This function is active in TV mode only.

**10. Options :**

**General Settings:**

- (1) **Channel Preview Windows** - Choose from **9**, **16** or **25** preview windows
- (2) **Channel Preview Time** - Determine the length of time each channel is displayed
- (3) **TimeShift Setting** - Select whether or not the temp file is saved
- (4) **Work Directory** - Directory for Recording files
- (5) **Schedule Capture** - Setup the recording time length

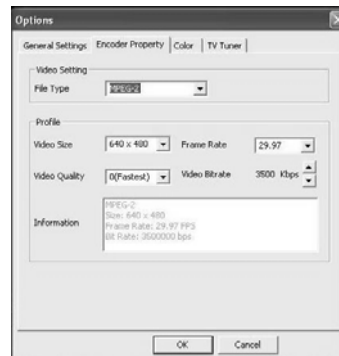


**Encoder Property:**

- (1) **Video Setting** - Recording format selection. Choose from: **MPEG1, MPEG2, VCD-NTSC, SVCD-NTSC, DVD-NTSC, WMV, VCD-PAL, SVCD-PAL, DVD-PAL.**
- (2) **Profile** - (a) **Video size selection: 320x240, 640x480, 720x480**

(b) **Video quality selection:** Select the best mix of video speed and quality

(c) **Frame Rate:** Select the desired frame rate



**Color:**

**Brightness / Contrast / Hue / Saturation / Sharpness** setup. To return settings to the factory preset, please click on the **Default** button.



**TV Tuner:**

**TV System** - TV system setup based on geographic location

**Video System** - S-video & Composite video system setup

**TV Type** - Cable & Antenna selection

**Fine Tune** : Fine tune for unclear TV Channel signal



**11. +/- Favorite Channel** : Add/Remove current channel in favorite list

**12. Favorite Channel Switch** : Switch favorite channels

**13. Record/Stop** : (a) During recording, you can click “Stop” to stop recording  
 (b) File name “mddhmmss” was saved automatically. m : Month (Jan->1, Feb->2.....Oct->O, Nov->N, Dec->D); dd : Date ; hh : Hour; mm : Minute; ss : Second

**14. Pause Playback** : Pause the video during playback

**15. Continue Playback** : After “Pause Playback”, click this button to playback continue. After **Time Shifting**, click this button to playback continue.

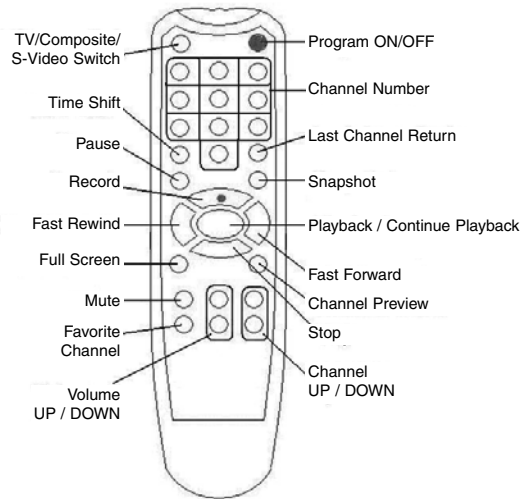
**16. Forward** : Fast forward video playback

**17. Backward** : Fast backward video playback



## Using the Infrared Remote

USB2TVTUNER comes with an external infrared remote that mirrors much of the functionality of the on-screen remote in the TV Tuner software.



**Please note:** The fast forward and rewind functions apply only when the time shifting feature is active.

## Troubleshooting Guide

This section lists some suggestions for improving system performance with USB2TVTUNER.

- Close all other programs while using the TV tuner. Running other software while using the TV tuner may reduce performance. Close all other applications, and make sure that software that runs in the background (i.e. anti-virus software) is closed to allocate the necessary resources to the TV Tuner application.
- Ensure that your computer supports USB 2.0. The software will display a warning if you plug the TV tuner into a USB 1.1 port, and it will not function at all or with diminished performance. If you are unsure whether your computer has USB 2.0 ports, consult your documentation for more information.
- Apply all software updates available for Windows and your computer's BIOS software, along with chipset and video card drivers, if available.
- Ensure that the correct drivers for your computer's USB 2.0 ports are installed and functioning correctly.
- Capturing and viewing video at a lower resolution may improve video flow.
- If you are not hearing sound, ensure you have the correct audio device selected in the **Setting** menu.
- Installing RAM and a faster hard drive (7200 RPM or higher) may improve the quality of captured video.
- If you can preview video but not capture it, try turning off/reducing the hardware acceleration settings on your video card by going to **Settings > Control Panel > Display > Settings > Advanced > Performance**.

## **Accessory Products from StarTech.com**

Contact your local StarTech.com dealer or visit [www.startech.com](http://www.startech.com) for cables or other accessories that will help you get the best performance out of your new product.

### **PC2TVSVID10**

10 ft. S-Video + 3.5mm Headphone Sound to S-Video + RCA Audio PC to TV A/V Cable

### **PC2TVSVID3**

3 ft. S-Video + 3.5mm Headphone Sound to S-Video + RCA Audio PC to TV A/V Cable

### **SVID2RCAMM10**

10ft S-Video to Composite Video Cable

### **SVIDMM**

S-Video Male to Male Gender Changer

## Technical Support

StarTech.com's lifetime technical support is an integral part of our commitment to provide industry-leading solutions. If you ever need help with your product, visit [www.startech.com/support](http://www.startech.com/support) and access our comprehensive selection of online tools, documentation, and downloads.

## Warranty Information

This product is backed by a one-year warranty. In addition, StarTech.com warrants its products against defects in materials and workmanship for the periods noted, following the initial date of purchase. During this period, the products may be returned for repair, or replacement with equivalent products at our discretion. The warranty covers parts and labor costs only. StarTech.com does not warrant its products from defects or damages arising from misuse, abuse, alteration, or normal wear and tear.

### Limitation of Liability

In no event shall the liability of StarTech.com Ltd. and StarTech.com USA LLP (or their officers, directors, employees or agents) for any damages (whether direct or indirect, special, punitive, incidental, consequential, or otherwise), loss of profits, loss of business, or any pecuniary loss, arising out of or related to the use of the product exceed the actual price paid for the product.

Some states do not allow the exclusion or limitation of incidental or consequential damages. If such laws apply, the limitations or exclusions contained in this statement may not apply to you.

## About StarTech.com

StarTech.com is “The Professionals’ Source for Hard-to-Find Computer Parts”. Since 1985, we have been providing IT professionals with the quality products they need to complete their solutions. We offer an unmatched selection of computer parts, cables, server management solutions and A/V products and serve a worldwide market through our locations in the United States, Canada, the United Kingdom and Taiwan.

Visit **[www.startech.com](http://www.startech.com)** for complete information about all our products and to access exclusive interactive tools such as the Parts Finder and the KVM Reference Guide. StarTech.com makes it easy to complete almost any IT solution. Find out for yourself why our products lead the industry in performance, support, and value.