

USB2VGA

Instruction Manual

USB to VGA Adapter

**USB 2.0 to VGA External Multi
Monitor Video Adapter**

StarTech.com 
Making hard-to-find easy!®

FCC Compliance Statement

This equipment has been tested and found to comply with the limits for a Class B digital device, pursuant to part 15 of the FCC Rules. These limits are designed to provide reasonable protection against harmful interference in a residential installation. This equipment generates, uses and can radiate radio frequency energy and, if not installed and used in accordance with the instructions, may cause harmful interference to radio communications. However, there is no guarantee that interference will not occur in a particular installation. If this equipment does cause harmful interference to radio or television reception, which can be determined by turning the equipment off and on, the user is encouraged to try to correct the interference by one or more of the following measures:

- Reorient or relocate the receiving antenna.
- Increase the separation between the equipment and receiver.
- Connect the equipment into an outlet on a circuit different from that to which the receiver is connected.
- Consult the dealer or an experienced radio/TV technician for help.

Use of Trademarks, Registered Trademarks, and other Protected Names and Symbols

This manual may make reference to trademarks, registered trademarks, and other protected names and/or symbols of third-party companies not related in any way to StarTech.com. Where they occur these references are for illustrative purposes only and do not represent an endorsement of a product or service by StarTech.com, or an endorsement of the product(s) to which this manual applies by the third-party company in question. Regardless of any direct acknowledgement elsewhere in the body of this document, StarTech.com hereby acknowledges that all trademarks, registered trademarks, service marks, and other protected names and/or symbols contained in this manual and related documents are the property of their respective holders.

Table of Contents

Introduction	1
Packaging Contents.....	1
System Requirements	1
Installation	1
Windows 2000/XP	1
Windows Vista	3
Multiple USB Video Adapter Installation.....	5
Configuring the Adapter	6
USB 2.0 to VGA Adapter Properties.....	7
Virtually Repositioning Your Displays.....	8
Troubleshooting	8
Specifications	10
Supported Resolutions	10
Technical Support	11
Warranty Information	11

Introduction

Packaging Contents

- 1 x USB2VGA video adapter
- 1 x Driver CD
- 1 x User Manual

System Requirements

- An available USB 2.0 port
- VGA compatible monitor/display
- Microsoft Windows® 2000/XP/Vista/7 (32/64-bit)

NOTE: Aero desktop theme not supported

Installation

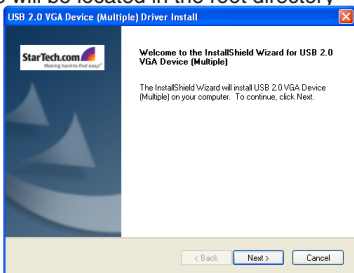
Please ensure that the driver installation is complete prior to the physical installation of the USB 2.0 to VGA adapter.

Windows 2000/XP

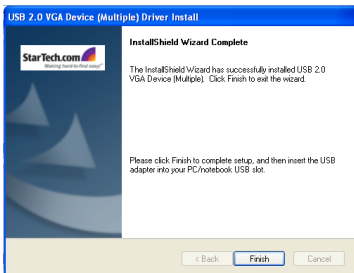
1. Insert the Driver CD into your CD/DVD-ROM drive.
2. If the installation program does not begin automatically, locate the Setup.exe application. This file will be located in the root directory of the Driver CD.

3. Executing the Setup.exe application will launch the following screen. Please click on Next:

***Ensure that the USB Video Adapter is not connected to the host computer.**

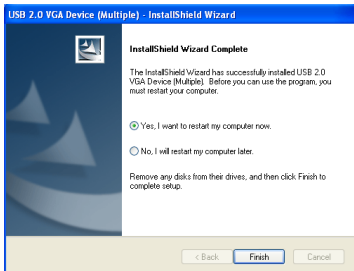


- Once driver installation is complete, you will reach the following screen. Click on the “Finish” button.



- Plug in the USB Video Adapter. Windows will then install the drivers for the adapter.

- Once the Windows has finished the driver installation, it will prompt you to restart the computer. Select “Yes, I want to restart my computer now”, and click the “Finish” button.



- While the computer is restarting, connect the VGA cord running from the secondary monitor/display to the adapter. Turn the monitor/display on.
- Once Windows has fully loaded, the secondary monitor should now be ready for use. You should see this icon in the System Tray:



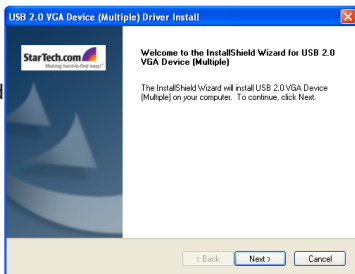
Windows Vista/7

NOTE: The Aero desktop theme is not supported by this adapter, so should be disabled prior to use of the USB Video Adapter.

1. Insert the Driver CD into your CD/DVD-ROM drive.
2. If the installation program does not begin automatically, locate the Setup.exe application. This file will be located in the root directory of the Drivers CD.



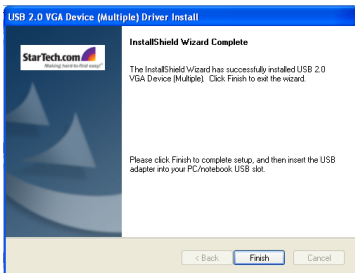
3. When the InstallShield Wizard launches, click Next. ***Ensure the USB2VGA adapter is not connected to the host computer.**



4. Please wait while Setup searches for installed components.

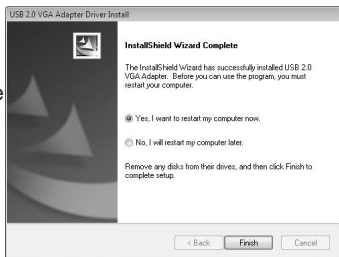


5. Once driver installation is complete, you will reach the following screen. Click on the "Finish" button.



6. Plug in the USB Video Adapter. Windows will then install the drivers for the adapter.

7. Select “Yes, I want to restart my computer now” and click the “Finish” button.



8. While the computer is restarting, connect the VGA cord running from the secondary monitor/display to the adapter. Turn the monitor/display on.
9. Once Windows has fully loaded, the secondary monitor should now be ready for use. You should see this icon in the System Tray:



Multiple USB Video Adapter Installation

Ensure you have the latest version of the drivers installed, otherwise, please download them from the StarTech.com website (www.startech.com).

1. Complete the installation steps, up to when you plug in the first USB Video Adapter. When prompted to restart, select **“No, I will restart my computer later”** and click **“Finish”** to continue on to the installation of the next USB Video Adapter unit.
2. Connect another monitor/display to the VGA connector of the second USB Video Adapter, then turn on the display.
3. Connect the USB type A connector on the second USB Video Adapter to an available USB 2.0 port on the host computer. The driver installation will begin automatically.

Repeat these steps for each additional USB Video Adapter you wish to install. Once all USB Video Adapters are installed, reboot the computer. After rebooting, you may be prompted to reboot one final time; please do so.

Configuring the Adapter

Once the driver and adapter have been installed, an icon will appear in the system tray as shown below. This utility allows you to quickly change the settings and resolution for your USB 2.0 VGA Adapter. The configuration menu can be accessed by right-clicking on the icon:



Primary Mode

Selecting USB-VGA (Primary), will set the secondary display adapter as the main display adapter in the system. The system's primary adapter (and monitor) will automatically switch to act as the extended desktop.



Please Note: Some display utilities and drivers that ship with AGP and built-in display adapters will prevent this option from working on some systems. For the USB-VGA (Primary) setting to take effect, you must first disable the original display utility (typically located in the system tray).

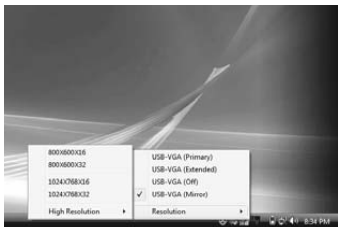
Extended Mode

By default, your USB 2.0 VGA Adapter will extend your Windows desktop functioning in USB-VGA(Extended) . You can change the relative position of this extension under the Display Properties (Go to Control Panel -> double click on Display and select the Settings tab).



Mirror Mode

This setting will mirror the image from your original desktop onto the secondary desktop.



USB 2.0 to VGA Adapter Properties

1. To access the Display Properties for the USB 2.0 VGA Adapter, open the Control Panel, and double-click on the Display icon.
2. Select the Settings tab.
3. Click on the Display drop-down menu, and select the USB 2.0 VGA DEVICE (DISPLAY) as illustrated below:



4. From here, you can change the resolution and color depth as desired. Once the desired changes have been made, click on OK to apply the settings.

Virtually Repositioning Your Displays

Click and drag the appropriate monitor icon (labelled 1 or 2) to the desired position. For example, the secondary display can be dragged to the left of the primary display, allowing it to be positioned virtually on the left. Click OK or Apply to save the changes.

Troubleshooting

The USB 2.0 to VGA Adapter can't be set as the primary display

Some video card manufacturers ship their product with a utility that prevents other video cards from being set as the primary card. Please check the system tray for an icon representing this utility, and if possible, please disable the utility prior to switching to the USB 2.0 to VGA adapter as the primary display.

My DVD player will not work when I move the image to the extended display

Some DVD playback software does not support playing video on a second adapter of any kind. Please refer to the documentation that was included with your DVD playback software for further information.

Video will not display using Windows Media Player on the extended desktop

Please ensure that you have moved the Media Player window completely over to the second screen.

There are horizontal lines covering the displayed image

This is due to a low refresh rate setting. You can change this in: Display Properties, Settings, Advanced, Monitor. Make sure that you have selected the USB 2.0 VGA Device first, and do not exceed the refresh rate limitations of the monitor. Resetting, or resynchronizing the monitor may also help. For further details on how to reset or resynchronize your monitor, please refer to the documentation that was included with your monitor purchase.

I am unable to use applications that require Direct3D on the USB 2.0 VGA adapter

Currently, the drivers that support the USB 2.0 VGA adapter do not support Direct3D. Please check for driver updates in the future, for added support. If your application requires Direct3D, please use the main display adapter.

The following troubleshooting tips may help if you are experiencing any issues.

- Check to make sure that all connectors are plugged in correctly.
- Make sure that the USB port that you are using is USB 2.0.
- Check to see that the monitor is connected correctly and the power is ON.
- Try connecting the adapter directly to the computer instead of through a hub.
- Make sure you restart your computer after the driver installation.
- Unplug the adapter and re-insert it.
- Check the website to make sure you have the latest drivers.
- Reset/refresh/resynchronize your monitor.
- If you have problems during the boot up process, start your computer in Safe Mode and uninstall the driver. Hold the CTRL key until the Windows startup menu appears and select Safe Mode.
- As there is a limitation, the USB 2.0 VGA Adapter cannot be used for the viewing of DVD video movie except for the Media Player Classic software on Windows Vista.
- It may disable the main display when you access the Primary function on part of graphic cards of Intel solution.

Specifications

Bus Interface	USB 2.0
Connectors	USB type A DE-15 female
Chipset	PLX Netchip Net2280
Maximum number of Adapters	5
Supported Operating Systems	Windows® 2000/XP/ Vista/7 (32/64-bit)

Supported Resolutions

Aspect Ratio	Resolution	Color Depth
16:10	1680x1050	16
16:10	1440x900	16, 32
16:10	1280x800	16, 32
15:9	1280x768	16, 32
5:4	1280x1024	16, 32
4:3	1600x1200	16
4:3	1280x960	16, 32
4:3	1152x864	16, 32
4:3	1024x768	16, 32
4:3	800x600	16, 32

Technical Support

StarTech.com's lifetime technical support is an integral part of our commitment to provide industry-leading solutions. If you ever need help with your product, visit www.startech.com/support and access our comprehensive selection of online tools, documentation, and downloads.

Warranty Information

This product is backed by a one year warranty.

In addition, StarTech.com warrants its products against defects in materials and workmanship for the periods noted, following the initial date of purchase. During this period, the products may be returned for repair, or replacement with equivalent products at our discretion. The warranty covers parts and labor costs only. StarTech.com does not warrant its products from defects or damages arising from misuse, abuse, alteration, or normal wear and tear.

Limitation of Liability

In no event shall the liability of StarTech.com Ltd. and StarTech.com USA LLP (or their officers, directors, employees or agents) for any damages (whether direct or indirect, special, punitive, incidental, consequential, or otherwise), loss of profits, loss of business, or any pecuniary loss, arising out of or related to the use of the product exceed the actual price paid for the product. Some states do not allow the exclusion or limitation of incidental or consequential damages. If such laws apply, the limitations or exclusions contained in this statement may not apply to you.



StarTech.com has been making “hard-to-find easy” since 1985, providing high quality solutions to a diverse IT and A/V customer base that spans many channels, including government, education and industrial facilities to name just a few. We offer an unmatched selection of computer parts, cables, A/V products, KVM and Server Management solutions, serving a worldwide market through our locations in the United States, Canada, the United Kingdom and Taiwan.

Visit **www.startech.com** today for complete information about all our products and to access exclusive interactive tools such as the Cable Finder, Parts Finder and the KVM Reference Guide.