

USB 4-in-1 Docking Station with VGA

USBVGADOCK



CONVERGEAV

StarTech.com

Making hard-to-find easy!

FCC Compliance Statement

This equipment has been tested and found to comply with the limits for a Class B digital device, pursuant to part 15 of the FCC Rules. These limits are designed to provide reasonable protection against harmful interference in a residential installation. This equipment generates, uses and can radiate radio frequency energy and, if not installed and used in accordance with the instructions, may cause harmful interference to radio communications. However, there is no guarantee that interference will not occur in a particular installation. If this equipment does cause harmful interference to radio or television reception, which can be determined by turning the equipment off and on, the user is encouraged to try to correct the interference by one or more of the following measures:

- Reorient or relocate the receiving antenna.
- Increase the separation between the equipment and receiver.
- Connect the equipment into an outlet on a circuit different from that to which the receiver is connected.
- Consult the dealer or an experienced radio/TV technician for help.

Use of Trademarks, Registered Trademarks, and other Protected Names and Symbols

This manual may make reference to trademarks, registered trademarks, and other protected names and/or symbols of third-party companies not related in any way to StarTech.com. Where they occur these references are for illustrative purposes only and do not represent an endorsement of a product or service by StarTech.com, or an endorsement of the product(s) to which this manual applies by the third-party company in question. Regardless of any direct acknowledgement elsewhere in the body of this document, StarTech.com hereby acknowledges that all trademarks, registered trademarks, service marks, and other protected names and/or symbols contained in this manual and related documents are the property of their respective holders.

Table of Contents

Introduction	1
Installation.....	2
Driver Installation	2
Windows 2000/XP	2
Windows Vista™	3
Verifying Driver Installation	5
Windows 2000/XP	5
Windows Vista™	6
Operation.....	8
USB to Ethernet	8
USB to Audio	8
USB to VGA.....	8
Modes of Display Operation	9
Primary	9
Extended (Default)	9
Mirror	10
OFF	10
Rotation	10
Troubleshooting.....	11
Specifications	13
Technical Support.....	14
Warranty Information	14

Introduction

Thank you for purchasing a StarTech.com 4-in-1 USB Docking Station with VGA. This innovative device converts a single USB 2.0 port into multiple connection ports, including a VGA Port, 10/100 RJ45 network port, dual (3.5mm phono) audio ports and four additional USB 2.0 ports. Perfect for desktop or notebook operating environments, USBVGADOCK also makes a stylish addition to any desktop or notebook computer.

Features

- Supports monitor resolutions up to WUXGA 1920 x 1200
- Plug-and-Play USB connectivity
- Stereo audio output (Speaker/Headphone) and monaural audio input (Microphone)

Package contents

This package should contain:

- 1 x USB Docking Station with VGA
- 1 x USB 2.0 A to mini B type cable
- 1 x AC Power Adapter (DC 3A/5V)
- 1 x Driver CD
- 1 x Instruction Manual

System Requirements

- 1.0GHz or higher processor (i.e. Intel Pentium 4 / Celeron Family AMD K6 / Athlon / Duron Family)
- 256 MB memory or higher (512B memory or higher recommended for optimal performance)
- Available USB 2.0 port, USB 2.0 host controller
- Windows 2000 SP4 / Windows XP SP2 / Windows Vista (32-bit)

NOTE: Aero desktop theme not supported.

Installation

Installing the device driver enables your computer's operating system to recognize the docking station ports once it is connected.

To properly connect USBVGADOCK to a host computer, please ensure that the necessary driver installation (detailed below) has been completed **prior to connecting USBVGADOCK to the host computer.**

Driver Installation

Windows 2000/XP

1. With the computer in a powered state, insert the Driver CD (included) into the CD/DVD-ROM drive. When the setup program launches, click **OK** to launch the InstallShield Wizard.

If the setup program does not begin automatically, please browse to and execute the **Setup.exe** file on the Driver CD (D:\Disk 1\Setup.exe , where D: denotes the path of your CD/DVD-ROM drive).

2. Click **Next** on the InstallShield Wizard Welcome screen:



3. When the License Agreement screen appears, please review it and check **I accept the terms of the license agreement.** Click **Next** to proceed.

4. When the Microsoft Hardware Installation warning dialogue appears, please select **Continue Anyway** to continue with the device driver installation. It will not affect the device driver installation or device usage.
5. Once the installation has completed, you will be asked if you wish to restart your computer. Please select **Yes, I want to restart my computer now** and click **Finish** to reboot.
6. After rebooting, the Found New Hardware Wizard will appear. Please ensure that **Install the software automatically (recommended)** is selected, and click on **Next** to continue.
7. A Microsoft Hardware Installation warning dialogue will be displayed; please select **Continue Anyway**.
8. Upon completion, the Found New Hardware Wizard will indicate that it has **...finished installing the software...** Please click on **Finish**.

Windows Vista™

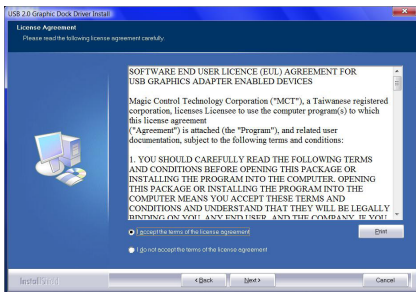
1. With the computer in a powered state, insert the Driver CD (included) into the CD/DVD-ROM drive. When the setup program launches, click **OK** to launch the InstallShield Wizard.

If the setup program does not begin automatically, please browse to and execute the **Setup.exe** file on the Driver CD (D:\Disk 1\Setup.exe , where D: denotes the path of your CD/DVD-ROM drive). Click **OK** to launch the InstallShield Wizard.



Instruction Manual

- Click **Next** on the InstallShield Wizard Welcome screen (shown previous page).
- When the License Agreement screen appears, please review it and check **I accept the terms of the license agreement**. Click **Next** to proceed.



- A Windows Security warning dialogue box will appear. Please select **Install this driver software anyway** to continue:



- Upon completion, the Found New Hardware Wizard will indicate that it has **...finished installing the software...** Please select **Yes, I want to restart my computer now** and click **Finish** to reboot

Verifying Driver Installation

Windows 2000/XP

To ensure that driver installation was successful:

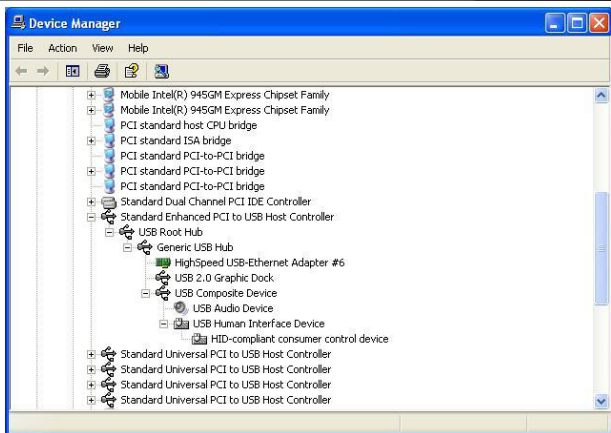
1. Right-click on **My Computer**.
2. Select **Manage** to launch the Computer Management window.
3. In the left pane of the Computer Management window, select **Device Manager**.

At the top of the Computer Management window, click on **View**, then select **By Connection Type**:



4. In the right pane of the Computer Management window, select **Standard Enhanced PCI to USB Host Controller**, then click on **USB Root Hub**, to display the newly installed devices (depicted on the following page):

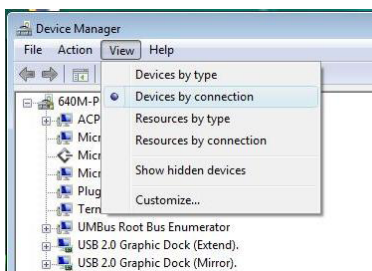
*High Speed USB Ethernet Adapter, USB2.0 GRAPHIC DOCK Device
USB Composite Device, USB Audio Device, USB Human Interface
Device, HID-compliant consumer control device.*



Windows Vista™

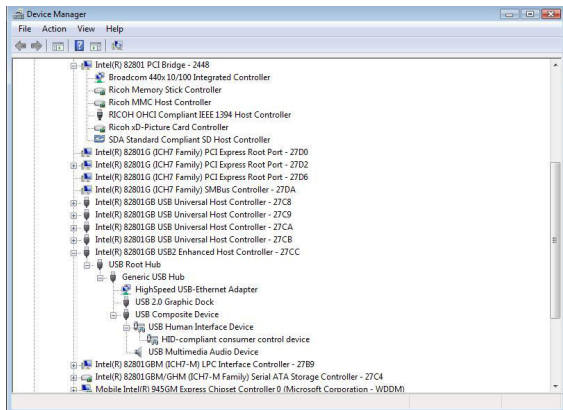
1. Right-click on **Computer**.
2. Select **Manage** to launch the Computer Management window.
3. In the left pane of the Computer Management window, select **Device Manager**.

At the top of the Computer Management window, click on **View**, then select **By Connection Type**:



4. In the right pane of the Computer Management window, select **Intel(R) 82801GB USB2 Enhanced Host Controller-27CC**, then **USB Root Hub** to display the list of newly installed devices:

High Speed USB- Ethernet Adapter, USB 2.0 GRAPHIC DOCK, USB Composite Device, USB Human Interface Device, HID-compliant consumer control device, USB Multimedia Audio Device.



Operation

This section describes the main functions provided by USBVGADOCK:

NOTE: The Aero desktop theme is not supported by this adapter, so should be disabled prior to use of the USB Video Adapter.

USB to Ethernet

USBVGADOCK supports the 10/100Mbps LAN transfer capability, and is compliant with IEEE specifications 802.3u 100BASE-TX and 802.3 10BASE-T.

USB to Audio

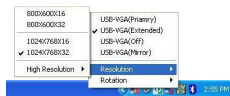
USBVGADOCK provides one microphone input and one stereo speaker output.

USB to VGA

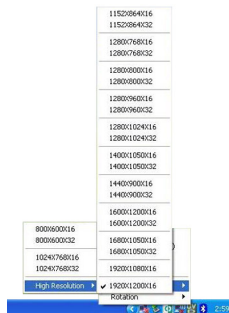
USBVGADOCK supports three distinct display modes: Primary, Extended and Mirror.

To configure how the VGA monitor connected to USBVGADOCK is used, right-click on the **UVD** logo, situated in the task bar (typically near the clock).

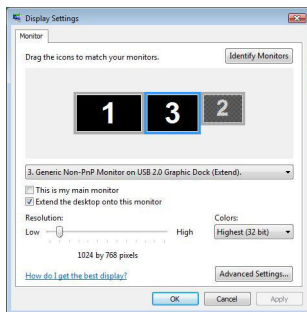
Click on **Resolution**
to change the display resolution
of the monitor connected to the
USBVGADOCK unit



Click on
High Resolution
to activate more
display options



Alternately, the same setting changes can be made from the **Display Properties** menu, which can be activated by right-clicking on an empty area of the user desktop and selecting **Properties**, then clicking the **Advanced** button and choosing the **Monitor** tab:



Modes of Display Operation

Primary

The system's main graphics adapter will automatically switch to act as the secondary graphics adapter and the main screen will now work as the extended desktop. The monitor connected to the USBVGADOCK will now act as the primary Windows desktop.

Please be advised that some display utilities and drivers that shipped with certain AGP and built-in display adapters may prevent this option from working on some systems. You can disable the other utility program (usually found in the same toolbar located on the bottom right hand corner) to enable this function to work properly.

Extended (Default)

By default, the monitor connected to the USBVGADOCK unit will work as an Extended Desktop, by extending the primary Windows desktop of your system onto the USBVGADOCK connected monitor. You can change the

relative position of this extended desktop in the operating system Display Properties.

Mirror

In Mirror mode, the Windows desktop will be mirrored/duplicated onto the secondary CRT/LCD monitor (connected to USBVGADOCK). The screen resolution setting on the secondary monitor will match that of the primary screen's resolution. For example, if the primary resolution is 1024x768@32bit, the secondary monitor's resolution will be the same.

However, if the selected resolution setting is *not supported* by the primary screen, a warning dialogue box will be displayed and the suggested screen resolution will be shown.

OFF

This option disables the monitor connected to the USBVGADOCK unit.

Rotation

This feature enables you to configure the orientation of the secondary monitor. Options include rotating **Right** (90 °), **Left** (270 °), **Flip** (180 °) and **Normal**, available in both Extended or Primary modes of operation.

Troubleshooting



Please Note: Should the USBVGADOCK become overloaded, simply disconnect it from the host computer, wait for the operating system to indicate that it has been removed, then reconnect it to the host computer.

In the event that you encounter difficulty when installing or using the USBVGADOCK USB 4-in-1 Docking Station with VGA, the following suggestions may be useful:

Q: Why can't I make the monitor connected to USBVGADOCK the primary display?

A: Some video cards are shipped with a utility that prevents other video cards from being set as the primary card. Check the taskbar (typically located next to the clock, in the lower right hand corner of the Windows desktop) for the utility. Disable this utility, in order to set the USBVGA-DOCK monitor to act as the primary display.

Q: Why won't my DVD player work when I move it over to the extended display?

A: Some DVD playback software packages do not support playing on a second display adapter. Try to open the program in the secondary display first before playing the DVD.

Q: Video will not play on Media Player if I move it over to the extended desktop?

A: Check that you have moved the Media Player window completely over to the second screen.

Q: Why does my mouse not move past the right side of the screen as it should (extended desktop)?

A: Ensure that the display settings accurately reflect the desired configuration. In this case, make sure that your display number '2' is on the right side of display number '1'. You can rearrange how Windows treats each display in relation to each other in the Display Properties Settings.

Q: There are lines running horizontally up and down the screen on the monitor connected to USBGADOCK.

A: First, try to reset/refresh/resynchronize the display. Typically, there is a button on the front panel of the display that allows this function. Please consult the vendor documentation that accompanied the monitor, if necessary to locate this button/function.

This could also be due to a low refresh rate setting. This can be changed in the operating system **Display Properties** menu. In the menu, click on Settings, Advanced, then Monitor. Make sure you select the USB 2.0 VGA Device first and do not set the refresh rate higher than what is supported by the connected monitor. This may damage your monitor. You can also try to reset/refresh/resynchronize your monitor.

Q: Direct3D does not work?

A: Please check our website for driver updates that may support this function. If your application requires this, please use the main display adapter.

Q: USBGADOCK does not work with a Windows Vista™ 64-bit system?

A: Please check our website for driver updates in the future, that may support this function.

Specifications

General Specifications	
LAN	10/100Mbps
Audio	USB Audio Device Class Specification v1.0
Connectors	1 x SVGA(DB-15); 1 x RJ45 (female) 2 x 3.5mm phono (audio) (female) 4 x USB 2.0 (type 'A' female) 1 x USB Mini B 5-pin (female)
Regulatory Certifications	CE, RoHS, WEEE
Operating System Support	Windows 2000 / XP / Vista (32-bit)

Supported Resolutions (Widescreen)		
<i>Aspect Ratio</i>	<i>Resolution</i>	<i>Color Depth</i>
16:10	1920 x 1200	16-bit
16:9	1920 x 1080	16-bit
16:10	1680 x 1050	16-bit, 32-bit
16:10	1440 x 900	16-bit, 32-bit
16:10	1280 x 800	16-bit, 32-bit
15:9	1280 x 768	16-bit, 32-bit

Supported Resolutions (Standard)		
	1280 x 1024	
5:4	1280 x 1024	16-bit, 32-bit
4:3	1600 x 1200	16-bit, 32-bit
4:3	1280 x 960	16-bit, 32-bit
4:3	1152 x 864	16-bit, 32-bit
4:3	1024 x 768	16-bit, 32-bit
4:3	800 x 600	16-bit, 32-bit

Technical Support

StarTech.com's lifetime technical support is an integral part of our commitment to provide industry-leading solutions. If you ever need help with your product, visit www.startech.com/support and access our comprehensive selection of online tools, documentation, and downloads.

Warranty Information

This product is backed by a one-year warranty. In addition, StarTech.com warrants its products against defects in materials and workmanship for the periods noted, following the initial date of purchase. During this period, the products may be returned for repair, or replacement with equivalent products at our discretion. The warranty covers parts and labor costs only. StarTech.com does not warrant its products from defects or damages arising from misuse, abuse, alteration, or normal wear and tear.

Limitation of Liability

In no event shall the liability of StarTech.com Ltd. and StarTech.com USA LLP (or their officers, directors, employees or agents) for any damages (whether direct or indirect, special, punitive, incidental, consequential, or otherwise), loss of profits, loss of business, or any pecuniary loss, arising out of or related to the use of the product exceed the actual price paid for the product. Some states do not allow the exclusion or limitation of incidental or consequential damages. If such laws apply, the limitations or exclusions contained in this statement may not apply to you.



StarTech.com has been making "hard-to-find easy" since 1985, providing high quality solutions to a diverse IT and A/V customer base that spans many channels, including government, education and industrial facilities to name just a few. We offer an unmatched selection of computer parts, cables, A/V products, KVM and Server Management solutions, serving a worldwide market through our locations in the United States, Canada, the United Kingdom and Taiwan.

Visit **www.startech.com** today for complete information about all our products and to access exclusive interactive tools such as the Cable Finder, Parts Finder and the KVM Reference Guide. StarTech.com makes it easy to complete almost any IT or A/V solution. Find out for yourself why our products lead the industry in performance, support, and value.