

WiFi to VGA Wireless Video Extender with Audio

WIFI2VGA



*actual product may vary from photos

DE: Bedienungsanleitung - de.startech.com

FR: Guide de l'utilisateur - fr.startech.com

ES: Guía del usuario - es.startech.com

IT: Guida per l'uso - it.startech.com

NL: Gebruiksaanwijzing - nl.startech.com

PT: Guia do usuário - pt.startech.com

For the most up-to-date information, please visit: www.startech.com

Manual Revision: 03/15/2012

FCC Compliance Statement

This equipment has been tested and found to comply with the limits for a Class B digital device, pursuant to part 15 of the FCC Rules. These limits are designed to provide reasonable protection against harmful interference in a residential installation. This equipment generates, uses and can radiate radio frequency energy and, if not installed and used in accordance with the instructions, may cause harmful interference to radio communications. However, there is no guarantee that interference will not occur in a particular installation. If this equipment does cause harmful interference to radio or television reception, which can be determined by turning the equipment off and on, the user is encouraged to try to correct the interference by one or more of the following measures:

- Reorient or relocate the receiving antenna.
- Increase the separation between the equipment and receiver.
- Connect the equipment into an outlet on a circuit different from that to which the receiver is connected.
- Consult the dealer or an experienced radio/TV technician for help.

Use of Trademarks, Registered Trademarks, and other Protected Names and Symbols

This manual may make reference to trademarks, registered trademarks, and other protected names and/or symbols of third-party companies not related in any way to StarTech.com. Where they occur these references are for illustrative purposes only and do not represent an endorsement of a product or service by StarTech.com, or an endorsement of the product(s) to which this manual applies by the third-party company in question. Regardless of any direct acknowledgement elsewhere in the body of this document, StarTech.com hereby acknowledges that all trademarks, registered trademarks, service marks, and other protected names and/or symbols contained in this manual and related documents are the property of their respective holders.

Table of Contents

Introduction	1
Packaging Contents	1
System Requirements	1
Front View.....	2
Rear View.....	2
Installation	3
Software and Driver Installation.....	3
Hardware Installation	4
Wireless Network Configuration	5
How to Use	7
Advanced Settings	8
Web Interface Configuration	9
Troubleshooting	11
Specifications	14
Technical Support	15
Warranty Information	15

Introduction

The WiFi2VGA WiFi to VGA Wireless Video Extender with Audio lets you send a VGA signal with supporting audio wirelessly from your laptop or desktop computer to a remote VGA projector or display up to 180 feet (55 meters) away, at resolutions up to 1440x900.

This VGA over WiFi adapter connects using a single, compact device situated by your remote display; unlike many other wireless VGA solutions that require devices at both ends of the connection - saving the hassle of carrying a secondary device and giving you the freedom to install the included software on many computers as needed.

Compatible with Wireless N (IEEE 802.11N - backwards compatible with 802.11 B/G) networks, the wireless VGA extender offers data rates up to 150 Mbps for optimum video and audio quality, and also features an integrated USB port for keyboard/mouse connection.

Packaging Contents

- 1 x WiFi to VGA Converter
- 1 x Universal Power Adapter
- 3 x Power Adapter Plug (NA/ UK/ EU)
- 1 x Installation CD
- 1 x Instruction Manual

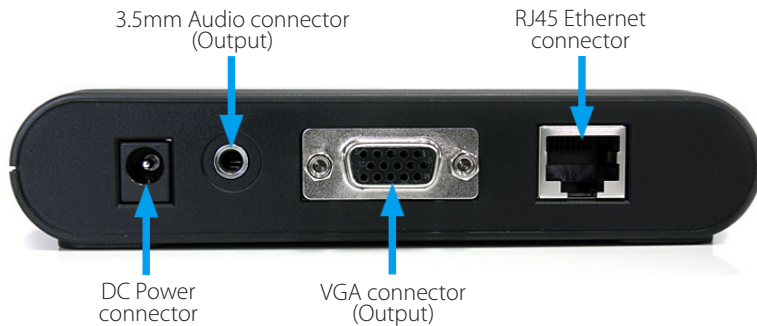
System Requirements

- IEEE 802.11N or G or B wireless network
- VGA enabled display device (i.e. monitor, projector, HDTV, etc.) with VGA cable
- Available AC electrical outlet
- Microsoft® Windows® XP/ Vista/ 7 (32/64-bit)

Front View



Rear View



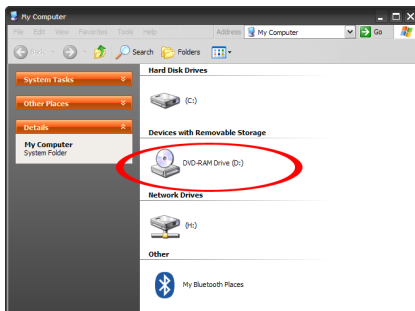
Installation

Software and Driver Installation

1. Insert the included installation CD into the computer's CD/DVD drive.
2. If AutoPlay runs, choose the option to browse/open the folder. Otherwise you can access the files on the CD by going into My Computer and double-clicking the CD/DVD drive.



*photos/screenshots for reference only



3. Run the PC2TV application to begin the driver/software installation wizard.
4. Proceed through the installation wizard until the benchmark application runs.
5. The Benchmark application will test the capabilities/performance of the computer system to run the video extender software. It will provide a rating out of 5 stars (see below for description). Click the **"Analysis"** button to begin.

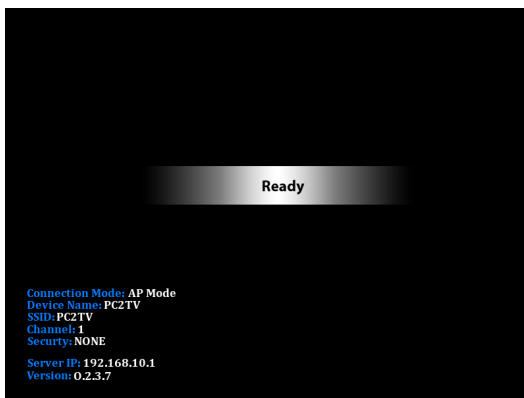


Rating	Description
1 Star	CPU and graphics performance are below minimum recommended levels.
2 Star	Music and Photo viewing and web surfing are acceptable. Video playback at a very low screen resolution may be possible.
3 Star	Good Music playback and Photo viewing quality. Video playback may still lag.
4 Star	Video playback should be smooth.
5 Star	Best performance for video playback and all features.

- After the benchmark is complete, reboot the computer.
- After the computer has rebooted, there will be an icon for PC2TV that will launch the software for the video extender.

Hardware Installation

- Connect a male/male VGA cable from the rear panel of the video extender to the remote display.
- Connect the included power adapter from an electrical outlet to the video extender.
- OPTIONAL:** Connect a USB peripheral, such as keyboard/mouse, to the USB hub port on the wireless video extender.
- Turn on the remote display.
- Turn on the video extender by pressing the power button on the front panel.
- Wait at least 60 seconds for the remote display to show the ready screen from the video extender.



- You can now connect to the video extender over WiFi.

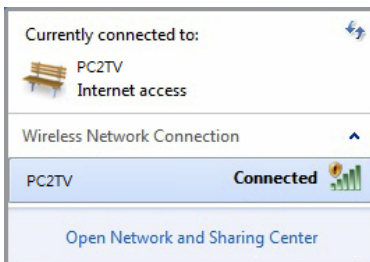
Wireless Network Configuration

The video extender can operate in two wireless modes: Wireless Access Point mode (AP) or Client Mode (STA).

- **AP Mode (default):** The video extender will act as a wireless access point (i.e. wireless router) for other wireless enabled computers. This mode is useful if there is no existing wireless network where the video extender will be used, or you do not wish to have the video extender on your main network.
- **Client Mode:** The video extender will act as a regular wireless client and connect to an existing wireless network. This mode is useful if there is an existing wireless access point (i.e. wireless router) already setup or if the computers need Internet access at the same time. **NOTE:** The wireless AP must have DHCP enabled.

To set the video extender into Client mode:

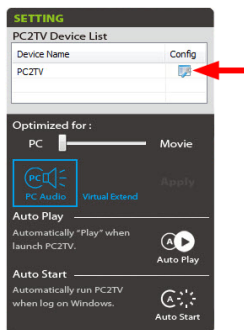
1. By default, the wireless video extender will be set to AP Mode. Check your computer's wireless network settings for the network called "PC2TV".
2. Connect to the PC2TV network. No encryption/security should be enabled yet.



3. Once connected, run the PC2TV application from the desktop icon.



4. Open the "Setting" menu and then click on the Configuration button.



5. From the Configuration window, click on the “STA Mode” tab then click the “Enable” option. Enter the required information for connecting to your existing wireless network (i.e. SSID, encryption type and network key). Click the SAVE button once complete.

The screenshot shows a configuration window with four tabs: Device, Overscan, AP Mode, and STA Mode. The STA Mode tab is highlighted with a red circle. Below the tabs, the 'Enable Station Mode' radio button is selected, indicated by a red arrow. The configuration fields include: SSID: PC2TV, Encryption: None, and KEY: (empty). The 'Connection fail back to AP mode' section has 'Enable' selected with a 50-second delay. At the bottom, there are 'Save' and 'Cancel' buttons.

NOTE: Client/STA mode does not support static IP addresses. The wireless AP must have DHCP enabled.

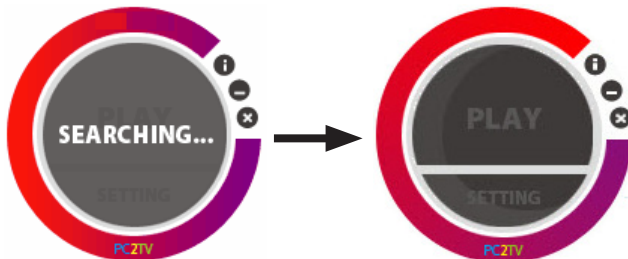
6. **OPTIONAL:** If connecting multiple wireless video adapters to this network, be sure to set a unique Device Name for each one for easy identification under the “Device” tab.
7. Restart the wireless video adapter by unplugging and reconnecting the power.

How to Use

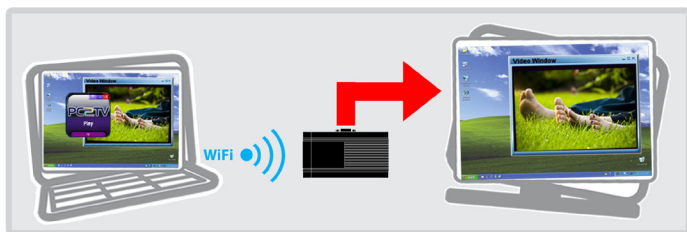
1. Double-click the PC2TV icon from the desktop.



2. Once the PC2TV application is ready to connect to the wireless video extender, the "Play" button will appear.



3. Clicking the "Play" button will automatically begin streaming the computer desktop to the remote display.

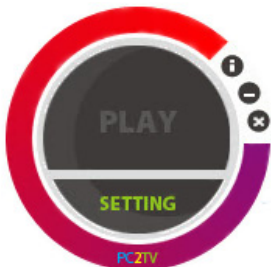


NOTE: Additional users may connect to the wireless video extender at any time. This will cause the currently connected user to be automatically disconnected.

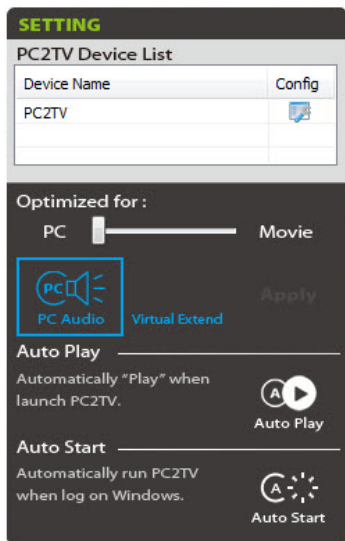
4. To stop the video streaming, click "Play" once more on the PC2TV application.

Advanced Settings

Advanced Settings can be accessed by clicking on the “Setting” button at the bottom of the PC2TV application window. Click the “Apply” button to set changes.

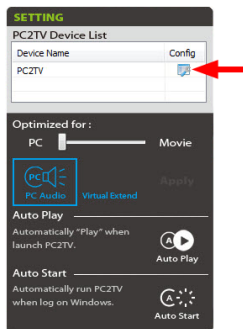
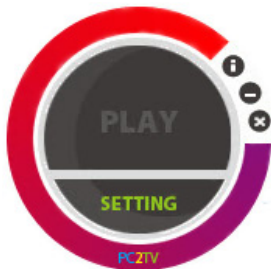


- **Device List:** Displays the name of the detected wireless video extender(s). If multiple are listed, double-click the one you wish to connect to.
- **Optimized For:** Optimizes the streaming video based on what you will be doing on the host computer. By default, this is set for “PC”, which should be used when running regular applications, such as web browsers or spreadsheets. Setting the slider bar in the middle should be used when viewing video/movies. If video performance is still not ideal, the slider can be set all the way to “Movie”.
- **PC Audio:** By default, when connected to the wireless video extender, audio on the host computer is disabled. Audio will instead be streamed to the wireless video extender only. By enabling this option, audio on the host computer will be restored, while still being streamed to the wireless video adapter.
- **Virtual Extend:** Click the icon above the text to create an extended desktop screen that will be streamed to the extender instead of the main desktop screen. Click the text “Virtual Extend” if problems arise while streaming the extended desktop. **NOTE: Compatible with Windows 7 only**
- **Auto Play:** Automatically starts video streaming once the PC2TV application is launched and the device is detected. Click the icon to enable/disable.
- **Auto Start:** Automatically starts the PC2TV application on Windows startup. Click the icon to enable/disable.

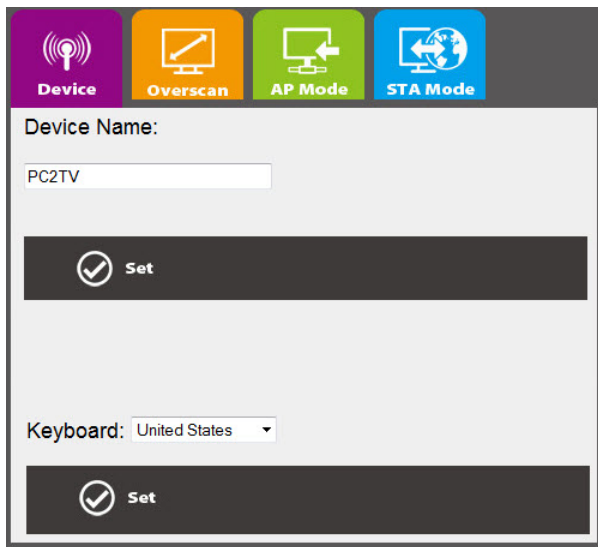


Web Interface Configuration

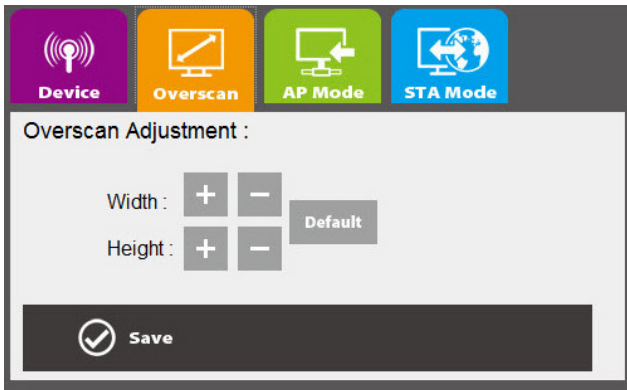
The web interface for the wireless display adapter can be accessed by clicking the Configuration button in the PC2TV Advanced Setting window.



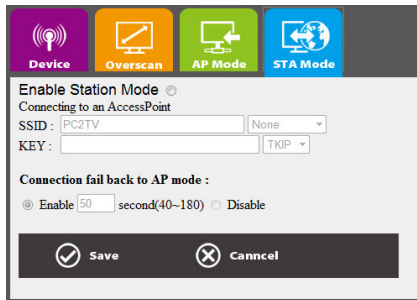
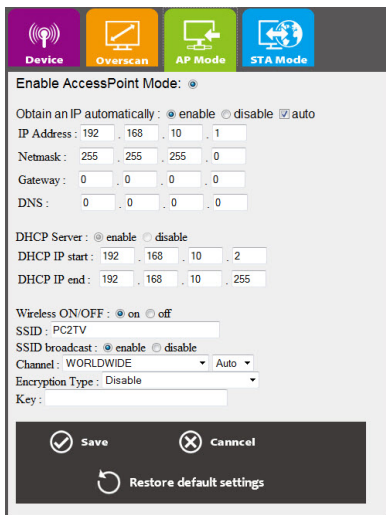
The web interface is divided into several sections that control different settings for the wireless display adapter.



- **Device:** Set the name/identifier for the wireless video extender, for easy identification if multiple extenders are present.



- **Overscan:** Adjust the overall width and height of the streaming image to better fit on the remote display.



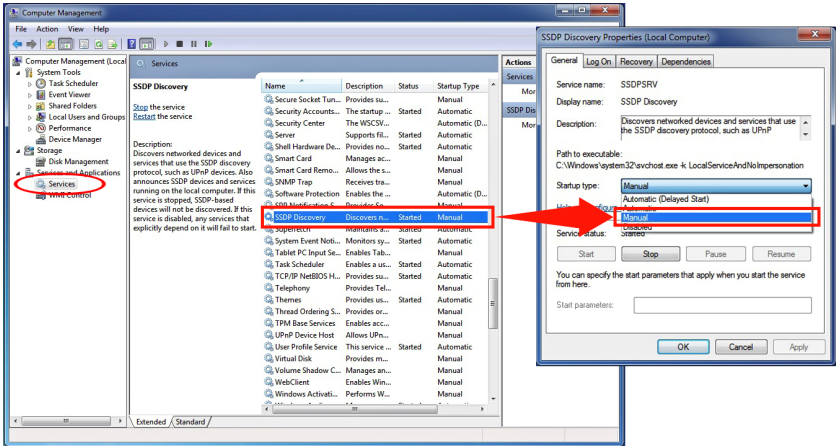
- **AP Mode/ STA Mode:** Select between AP Mode and Client Mode (STA Mode) and set any network settings required for each.

Troubleshooting

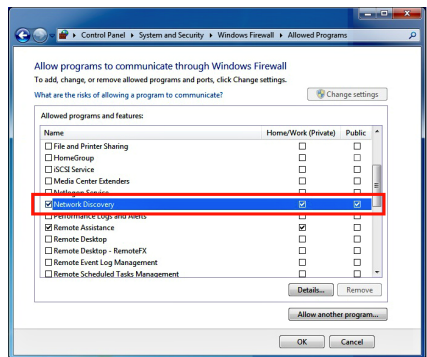
NetDispLib error pops up when launching the PC2TV application.

The SSDP Discovery service is disable or failed to start.

1. To check the SSDP Discovery service, from the main desktop, right-click on “My Computer” (“Computer” in Vista / 7), then select “Manage”. In the new Computer Management window, select “Service” under the “Service and Applications” heading.
2. Locate SSDP Discovery in the list of services and make sure that it is set to start Automatically. Then make sure that the service is started.

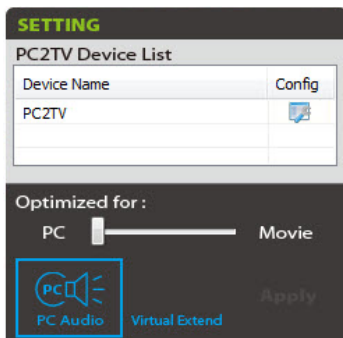


3. In Windows 7, go into the Firewall settings and allow for Network Discovery for both Private and Public networks. This setting can be found via “Control Panel”, “System and Security”, “Windows Firewall”, then “Allowed Programs”.

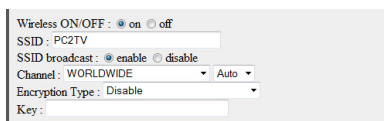


Poor quality video playback/ choppy video

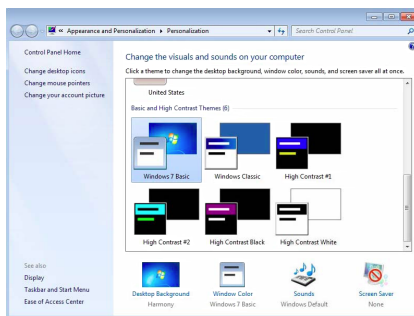
1. Make sure the optimization for the PC2TV application is set appropriately in the Advanced Setting menu. For video playback, the slider bar should be set in the middle, and all the way to “Movie” if problems are still encountered. Click the “Apply” button to confirm the setting.



2. **AP Mode:** If the “Channel” setting in the web interface is set for Auto, select a permanent channel.



3. **Windows Vista/ 7:** If using an Aero® theme, change the desktop theme to one under the “Basic and High Contrast” section.
4. Change the screen resolution size to a lower setting. Also make sure the resolution is one of the supported sizes.
5. Update the drivers for the computer's video card.



The PC2TV application cannot connect/find the wireless video extender.

- Double check that computer is connected to the proper wireless network. The default SSID of the wireless video extender is "PC2TV".
- Check that the Windows Firewall is not blocking the application. Set the PC2TV application as an allowed program if necessary.
- If any third-party firewall or anti-virus software is installed, check that the PC2TV application is not being blocked by either. Temporarily disable both to confirm if this is the case.

Unable to connect to the wireless video extender AP.

Reset the AP Mode settings:

1. Turn off the wireless video extender.
2. Connect the computer to the extender with an RJ45 Ethernet cable.
3. Power on the wireless video extender.
4. Launch the PC2TV application, go into Settings and then go into the configuration screen.
5. Click on the AP Mode tab and click on the "Restore Default Settings" button.
6. Once default settings restored, disconnect the RJ45 Ethernet cable and restart the extender.

PC2TV application does not work when connected with RJ45 Ethernet cable.

Make sure to connect the RJ45 Ethernet cable before powering on the wireless video extender.

Specifications

Video Signal	VGA (RGBHV)
	1 x DE-15 VGA female
	1 x 3.5mm Audio mini-jack female
External Connectors	1 x USB type A female
	1 x RJ45 Ethernet female
	1 x DC Power
LEDs	1 x Power
Supported Video Resolutions	Standard: 1280x1024, 1280x768, 1024x768, 800x600
	Widescreen: 1440x900, 1360x768, 1280x800, 1280x720
Maximum Data Transfer Rate	Wireless N: 150 Mbps
Audio Support	Yes
Supported Standards	IEEE 802.11n Draft 3.0, IEEE 802.11g, IEEE 802.11b
Wireless Operating Frequency	2.4 GHz ISM Bands (2.412~2.484 GHz)
Power Adapter	5V DC, 600 mA, center positive
Enclosure Material	Plastic
Dimensions	133.0mm x 71.0mm x 27.0mm
Weight	140g
Compatible Operating Systems	Windows XP/ Vista/ 7 (32/64-bit)

Technical Support

StarTech.com's lifetime technical support is an integral part of our commitment to provide industry-leading solutions. If you ever need help with your product, visit www.startech.com/support and access our comprehensive selection of online tools, documentation, and downloads.

For the latest drivers/software, please visit www.startech.com/downloads

Warranty Information

This product is backed by a two year warranty.

In addition, StarTech.com warrants its products against defects in materials and workmanship for the periods noted, following the initial date of purchase. During this period, the products may be returned for repair, or replacement with equivalent products at our discretion. The warranty covers parts and labor costs only. StarTech.com does not warrant its products from defects or damages arising from misuse, abuse, alteration, or normal wear and tear.

Limitation of Liability

In no event shall the liability of StarTech.com Ltd. and StarTech.com USA LLP (or their officers, directors, employees or agents) for any damages (whether direct or indirect, special, punitive, incidental, consequential, or otherwise), loss of profits, loss of business, or any pecuniary loss, arising out of or related to the use of the product exceed the actual price paid for the product. Some states do not allow the exclusion or limitation of incidental or consequential damages. If such laws apply, the limitations or exclusions contained in this statement may not apply to you.

StarTech.com

Hard-to-find made easy®

Hard-to-find made easy. At StarTech.com, that isn't a slogan. It's a promise.

StarTech.com is your one-stop source for every connectivity part you need. From the latest technology to legacy products — and all the parts that bridge the old and new — we can help you find the parts that connect your solutions.

We make it easy to locate the parts, and we quickly deliver them wherever they need to go. Just talk to one of our tech advisors or visit our website. You'll be connected to the products you need in no time.

Visit www.startech.com for complete information on all StarTech.com products and to access exclusive resources and time-saving tools.

StarTech.com is an ISO 9001 Registered manufacturer of connectivity and technology parts. StarTech.com was founded in 1985 and has operations in the United States, Canada, the United Kingdom and Taiwan servicing a worldwide market.