

## Desk Mount Articulating Dual Monitor Arm with Cable Management & Height Adjust

ARMDUAL



\*actual product may vary from photos

DE: Bedienungsanleitung - [de.startech.com](http://de.startech.com)

FR: Guide de l'utilisateur - [fr.startech.com](http://fr.startech.com)

ES: Guía del usuario - [es.startech.com](http://es.startech.com)

IT: Guida per l'uso - [it.startech.com](http://it.startech.com)

NL: Gebruiksaanwijzing - [nl.startech.com](http://nl.startech.com)

PT: Guia do usuário - [pt.startech.com](http://pt.startech.com)

For the most up-to-date information, please visit: [www.startech.com](http://www.startech.com)

## **Use of Trademarks, Registered Trademarks, and other Protected Names and Symbols**

This manual may make reference to trademarks, registered trademarks, and other protected names and/or symbols of third-party companies not related in any way to StarTech.com. Where they occur these references are for illustrative purposes only and do not represent an endorsement of a product or service by StarTech.com, or an endorsement of the product(s) to which this manual applies by the third-party company in question. Regardless of any direct acknowledgement elsewhere in the body of this document, StarTech.com hereby acknowledges that all trademarks, registered trademarks, service marks, and other protected names and/or symbols contained in this manual and related documents are the property of their respective holders.

# Table of Contents

<b>Introduction</b> .....	<b>1</b>
Package contents .....	1
<b>Product diagram</b> .....	<b>2</b>
<b>Installation</b> .....	<b>3</b>
Convert the desk clamp to a grommet clamp .....	3
Desk or grommet mounting .....	5
Attach the displays .....	7
Cable management .....	10
Adjusting LCD arm resistance .....	11
<b>Specifications</b> .....	<b>12</b>
<b>Technical Support</b> .....	<b>13</b>
<b>Warranty Information</b> .....	<b>13</b>

# Introduction

## Package contents

1



LCD arms  
Qty: Two

2



Dual mount  
Qty: One

3



Desk clamp  
Qty: One

4



Spacers  
Qty: Eight

5



M4x12 mm screws  
Qty: Eight

6



M4x25 mm screws  
Qty: Eight

7



Grommet mount  
Qty: One

8



M4 Allen key  
Qty: One

9



M5 Allen key  
Qty: One

10



Cover plate assembly  
Qty: Two

11



Plastic gasket cushions  
Qty: Four

12



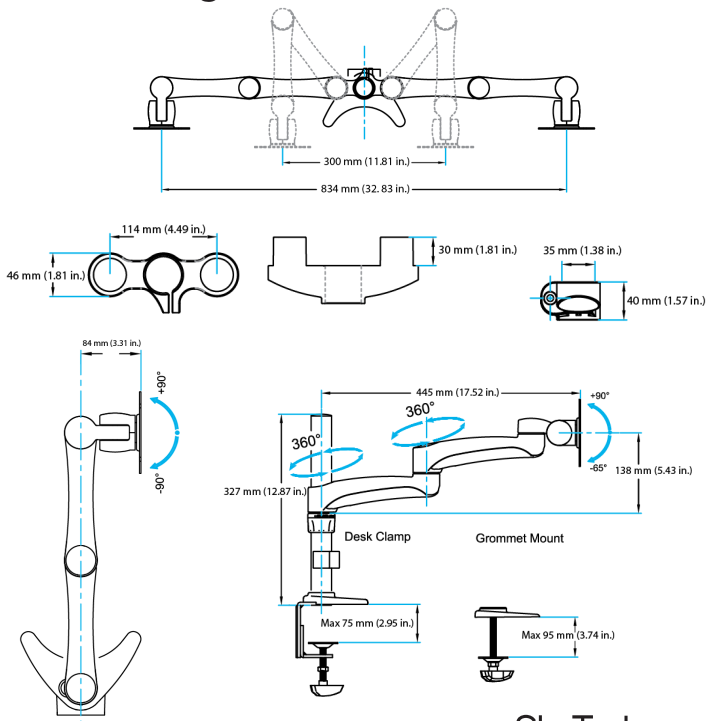
Cable clips  
Qty: Two



Instruction manual

Qty: One

## Product diagram



# Installation

**WARNING!** The maximum weight capacity of the Dual Monitor Arm is **27.2 kg (60 lbs)**.

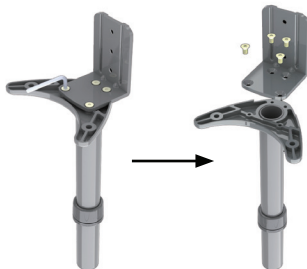
## Convert the desk clamp to a grommet clamp

The Dual Monitor Arm can be clamped to a desk or table, or mounted through a grommet hole. The following instructions outline how to convert the default desk clamp setup to a grommet clamp.

1. To disconnect the bottom half of the desk clamp **(3)**, use the M4 Allen key **(8)** to remove the two hex screws from the back of the desk clamp.



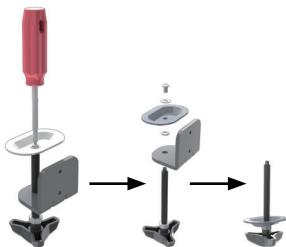
2. To disconnect the top half of the desk clamp **(3)**, use the M4 Allen key **(8)** to remove the four hex screws from the base of the pole.



3. Use the four hex screws that you removed in step 2 to install the grommet mount **(7)** to the base of the pole.



4. Use a Phillips screwdriver to remove the screw and two washers shown, and disconnect the threaded shaft from the base of the desk clamp **(3)**. Slide the plate back onto the shaft.



## Desk or grommet mounting

1. Adjust the height of the desk clamp (**3**) to fit your desk surface (if applicable).  
The clamp can be extended up to 75 mm (3 in.).



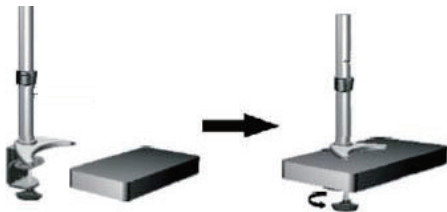
2. Place the four plastic gasket cushions (**11**) as shown.



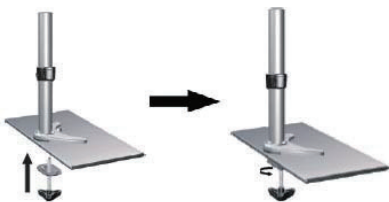


3. Depending on the type of mount you are using, do one of the following:

- **Desk clamp:** Place the desk clamp (3) opening around the edge of your desktop in your desired location and tighten the clamp by hand to secure it to the table. Ensure that the desk clamp (3) is making full contact with the desk surface.

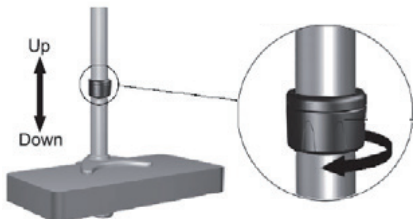


- **Grommet clamp:** Place the base of the unit over the grommet hole and thread the clamp into the grommet mount (7) until the clamp holds firmly against the bottom of the desk.

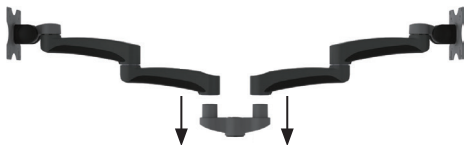


## Attach the displays

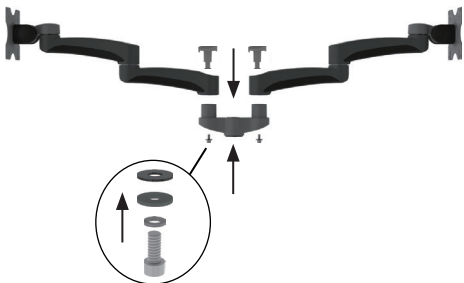
1. Loosen the collar on the support post and adjust it to the desired height.



2. Attach each of the LCD arms (1) to the dual mount (2).



3. Use the M5 Allen key (9) to remove the M6 screws and washers from each of the cover plate assemblies (10).
4. Place the remaining cover plate assemblies (10) onto each of the LCD arms (1).
5. Reinsert each set of the M6 screws and washers back into their cover plate assemblies, in the same order you removed them, through the bottom of each of the LCD arms (1).
6. Use the M5 Allen key (9) to tighten each of the cover plate assemblies.



7. Repeat steps 4 and 5 on the other LCD arm **(1)**.



8. Place the dual mount **(2)** and the attached LCD arms **(1)** attached onto the pole.

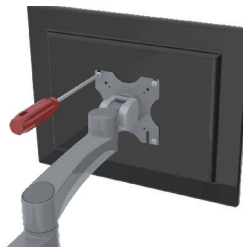
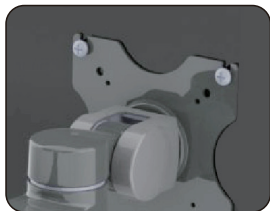


9. Use the M5 Allen key **(9)** to tighten the dual mount **(2)**.

10. To attach monitors, do one of the following:

- If the VESA mount sits flush against the installation surface on the monitor, insert the four M4x12 mm screws **(5)** through the mounting slots on the VESA mount and into the mounting holes on the back of the monitor. Use a Phillips screwdriver to tighten the screws.
- If the VESA mount doesn't sit flush against the installation surface on the monitor, you need to use the provided spacers. Insert the four M4x25 mm screws **(6)** through the mounting slots on the VESA mount, into the four spacers **(4)**, and into the mounting holes on the back of the monitor. Use a Phillips screwdriver to tighten the screws.

**WARNING!** To avoid damage to your display, do not overtighten the screws and stop immediately if you encounter resistance. Ensure that all spacers and screws being used are the same length and thread type.



## Cable management

**Note:** When you attach the cables and route them through the cable management channels, ensure that you leave enough slack to avoid stretching or pulling out the cables when you move the arm.

1. Connect your cables to your displays and position the mounting arm in its fully extended position to ensure that the cables you are using are long enough to allow for proper movement.
2. Remove the cable covers from the undersides of the LCD arms (**1**).
3. Run the cables down the LCD arms, leaving enough slack at the arm joints. Reattach the cable covers you removed in step 2.



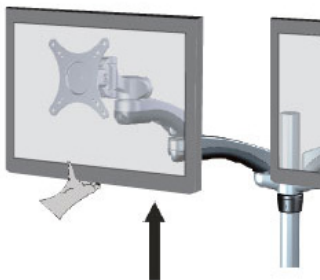
4. While holding the cables against the pole, snap the cable clips (**12**) over the cables and onto the pole.



## Adjusting LCD arm resistance

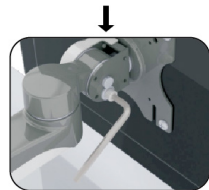
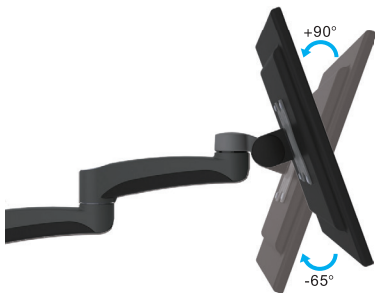
**WARNING!** Forced movement of the LCD arms or mount brackets without loosening the screws may damage the product or the mounted displays.

Always support your display from underneath when making any adjustments to the LCD Arms to avoid damage to the display.



**Note:** For all adjustments outlined below, turning the screw clockwise will increase the resistance, while turning the screw counter-clockwise will decrease resistance.

- To increase or decrease the tilt resistance, use the M5 Allen key (9) to adjust the set screw located on the side of the mount bracket joint.



# Specifications

<b>Weight Capacity</b>	60 lbs (27.2 kg)
<b>Max Display Size</b>	24"
<b>VESA Compatibility</b>	75x75 mm and 100x100 mm
<b>Maximum Extension</b>	18.66 in (474 mm)
<b>Maximum Mounting Surface Thickness</b>	3 in (75 mm)

# Technical Support

StarTech.com's lifetime technical support is an integral part of our commitment to provide industry-leading solutions. If you ever need help with your product, visit [www.startech.com/support](http://www.startech.com/support) and access our comprehensive selection of online tools, documentation, and downloads.

For the latest drivers/software, please visit [www.startech.com/downloads](http://www.startech.com/downloads)

## Warranty Information

This product is backed by a two year warranty.

In addition, StarTech.com warrants its products against defects in materials and workmanship for the periods noted, following the initial date of purchase. During this period, the products may be returned for repair, or replacement with equivalent products at our discretion. The warranty covers parts and labor costs only. StarTech.com does not warrant its products from defects or damages arising from misuse, abuse, alteration, or normal wear and tear.

### Limitation of Liability

In no event shall the liability of StarTech.com Ltd. and StarTech.com USA LLP (or their officers, directors, employees or agents) for any damages (whether direct or indirect, special, punitive, incidental, consequential, or otherwise), loss of profits, loss of business, or any pecuniary loss, arising out of or related to the use of the product exceed the actual price paid for the product. Some states do not allow the exclusion or limitation of incidental or consequential damages. If such laws apply, the limitations or exclusions contained in this statement may not apply to you.



Hard-to-find made easy. At StarTech.com, that isn't a slogan. It's a promise.

StarTech.com is your one-stop source for every connectivity part you need. From the latest technology to legacy products — and all the parts that bridge the old and new — we can help you find the parts that connect your solutions.

We make it easy to locate the parts, and we quickly deliver them wherever they need to go. Just talk to one of our tech advisors or visit our website. You'll be connected to the products you need in no time.

Visit [www.startech.com](http://www.startech.com) for complete information on all StarTech.com products and to access exclusive resources and time-saving tools.

*StarTech.com is an ISO 9001 Registered manufacturer of connectivity and technology parts. StarTech.com was founded in 1985 and has operations in the United States, Canada, the United Kingdom and Taiwan servicing a worldwide market.*