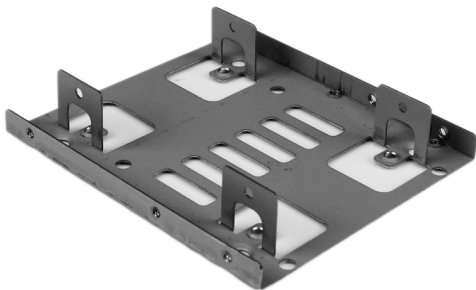


3.5" Mounting Kit for two 2.5" SATA SSD/HDD

BRACKET25X2



*actual product may vary from photos

DE: Bedienungsanleitung - de.startech.com

FR: Guide de l'utilisateur - fr.startech.com

ES: Guía del usuario - es.startech.com

IT: Guida per l'uso - it.startech.com

NL: Gebruiksaanwijzing - nl.startech.com

PT: Guia do usuário - pt.startech.com

For the most up-to-date information, please visit: www.startech.com

FCC Compliance Statement

This equipment has been tested and found to comply with the limits for a Class B digital device, pursuant to part 15 of the FCC Rules. These limits are designed to provide reasonable protection against harmful interference in a residential installation. This equipment generates, uses and can radiate radio frequency energy and, if not installed and used in accordance with the instructions, may cause harmful interference to radio communications. However, there is no guarantee that interference will not occur in a particular installation. If this equipment does cause harmful interference to radio or television reception, which can be determined by turning the equipment off and on, the user is encouraged to try to correct the interference by one or more of the following measures:

- Reorient or relocate the receiving antenna.
- Increase the separation between the equipment and receiver.
- Connect the equipment into an outlet on a circuit different from that to which the receiver is connected.
- Consult the dealer or an experienced radio/TV technician for help.

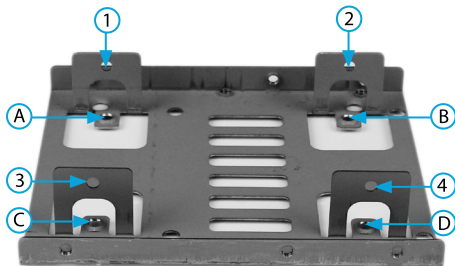
Use of Trademarks, Registered Trademarks, and other Protected Names and Symbols

This manual may make reference to trademarks, registered trademarks, and other protected names and/or symbols of third-party companies not related in any way to StarTech.com. Where they occur these references are for illustrative purposes only and do not represent an endorsement of a product or service by StarTech.com, or an endorsement of the product(s) to which this manual applies by the third-party company in question. Regardless of any direct acknowledgement elsewhere in the body of this document, StarTech.com hereby acknowledges that all trademarks, registered trademarks, service marks, and other protected names and/or symbols contained in this manual and related documents are the property of their respective holders.

Table of Contents

Product Diagram	1
Introduction	1
Packaging Contents	1
Installation	1
Technical Support	5
Warranty Information	5

Product Diagram



Top Drive Mounting Holes	Bottom Drive Mounting Holes
1	A
2	B
3	C
4	D

Introduction

Packaging Contents

- 1x 2.5" Mounting Bracket
- 4x Flat screws and Washers (bottom drive)
- 4x M3 x 5mm Screws (top drive)
- 4x 6-32 Screws (mounting the bracket into the PC)
- 1x SATA Power Y cable
- 2x 18" SATA DATA Cables
- Instruction Manual

Installation

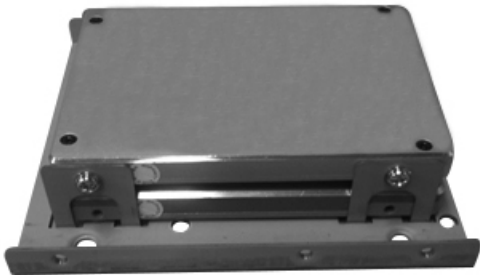
WARNING! Computer equipment can be severely damaged by static electricity. Be sure that you are properly grounded before opening your computer case or touching your hard drive.

1. Place the BRACKET25X2 so that it is facing upward on a table like the photo above.
2. Place the first 2.5" HDD/SSD so that it is label up on the mounting bracket, line up the HDD/SSD bottom installation holes on the bottom of the drive to match The **Bottom Drive Mounting Holes** pictured above.
3. Turn the Bracket over holding the drive into place, and fix 4 screws from the included **Screw kit** through the **Bottom Drive Mounting Holes**, into the HDD/SSD bottom installation holes.



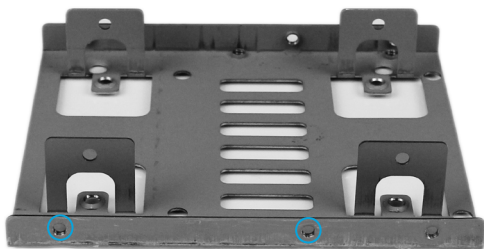
NOTE: If only installing one drive, continue to **Step 5**.

4. Turn the BRACKET25X2 back over so that the label on the installed HDD/SSD is facing upward. Then place your second 2.5" HDD/SSD on top of the first drive so that the HDD/SSD side installation holes match the Top Drive Mounting Holes on the BRACKET25X2.
5. Hold the HDD/SSD into place, and fix 4 screws from the included screw kit through the Top Drive Mounting Holes on the BRACKET25X2 into the side installation holes on the second HDD/SSD.

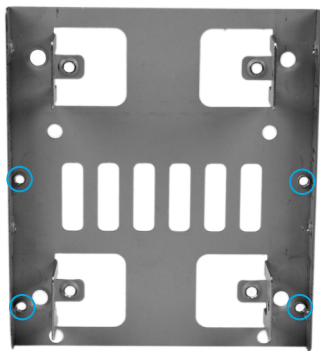


6. Ensure your computer is powered off, disconnected from an AC electrical outlet, and drained of any remaining power.
7. Open your computer case (refer to the computer user manual for details), and place the BRACKET25X2 with installed HDD/SSDs into an available 3.5" installation bay, lining up the bay installation holes on the BRACKET25X2 (pictured below), with installation holes on the 3.5" bay.

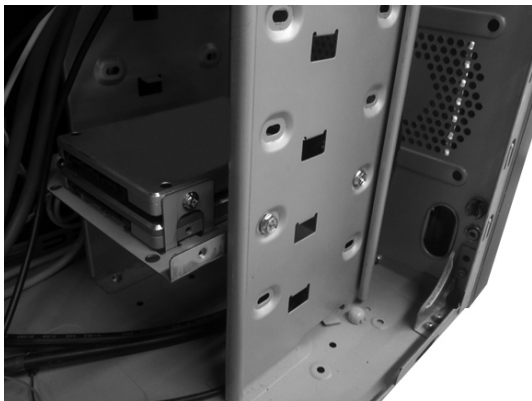
Side Installation Holes



Bottom Installation Holes

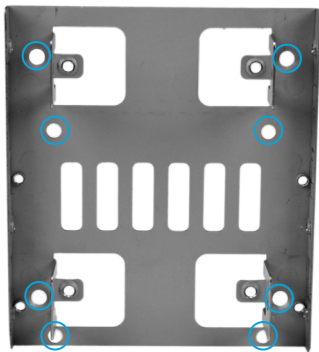


NOTE: Refer to your computer manual to determine what the best mounting method for you.



6. Connect the required Data/Power cables from your computer system to the installed 2.5" HDD/SDDs.
7. Replace the cover on your computer system, and installation is now completed.

NOTE: Holes pictured below are for 8/9cm fan mounting, and are not required for standard drive installation.



Technical Support

StarTech.com's lifetime technical support is an integral part of our commitment to provide industry-leading solutions. If you ever need help with your product, visit **www.startech.com/support** and access our comprehensive selection of online tools, documentation, and downloads.

For the latest drivers/software, please visit **www.startech.com/downloads**

Warranty Information

This product is backed by a lifetime warranty.

In addition, StarTech.com warrants its products against defects in materials and workmanship for the periods noted, following the initial date of purchase. During this period, the products may be returned for repair, or replacement with equivalent products at our discretion. The warranty covers parts and labor costs only. StarTech.com does not warrant its products from defects or damages arising from misuse, abuse, alteration, or normal wear and tear.

Limitation of Liability

In no event shall the liability of StarTech.com Ltd. and StarTech.com USA LLP (or their officers, directors, employees or agents) for any damages (whether direct or indirect, special, punitive, incidental, consequential, or otherwise), loss of profits, loss of business, or any pecuniary loss, arising out of or related to the use of the product exceed the actual price paid for the product. Some states do not allow the exclusion or limitation of incidental or consequential damages. If such laws apply, the limitations or exclusions contained in this statement may not apply to you.

Hard-to-find made easy. At StarTech.com, that isn't a slogan. It's a promise.

StarTech.com is your one-stop source for every connectivity part you need. From the latest technology to legacy products — and all the parts that bridge the old and new — we can help you find the parts that connect your solutions.

We make it easy to locate the parts, and we quickly deliver them wherever they need to go. Just talk to one of our tech advisors or visit our website. You'll be connected to the products you need in no time.

Visit www.startech.com for complete information on all StarTech.com products and to access exclusive resources and time-saving tools.

StarTech.com is an ISO 9001 Registered manufacturer of connectivity and technology parts. StarTech.com was founded in 1985 and has operations in the United States, Canada, the United Kingdom and Taiwan servicing a worldwide market.