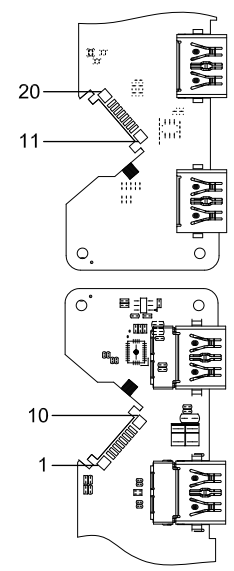
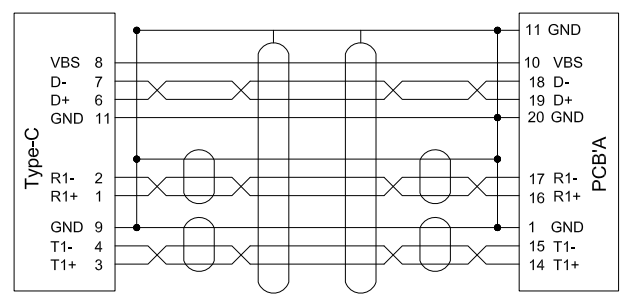


Type-C/M



PCB'A

A	3	TPE, Color Black, 85A
	2	PCB' A Clamp
		Screw\Nickel plating :KB, Ø 2*L5*D3.5mm.
		Top cover, Appearance spray color starry grey(USB-Cto4*USB-A)
	Bottom cover, Appearance spray color starry grey(USB-Cto4*USB-A)	
1	PCBA\IC:RTS5411E+VL160 Type-C\M to 4 X USB-A 3.1Gen1\Connector nickel plated	
NO	1	USB-C\M TO USB-C\M Cable(nickel plating)
		Cable\OD: 4.2mm (7\0.067T*1P+D+AL+HM)*4C+7\0.08T*1P+7\0.06T*4C+7\0.20T*2C+D+F+MD(No Marking)
		DESCRIPTION

THIRD ANGLE PROJECTION

GENERAL NOTES
DIMENSIONS ARE IN MM - DO NOT SCALE

THIS DOCUMENT CONTAINS CONFIDENTIAL, PROPRIETARY INFORMATION THAT IS PROPERTY OF STARTECH.COM

PRODUCT ID	HB30CM4AB		
DESCRIPTION	4 Port USB C Hub		
DO NOT SCALE	SHEET: 1 OF: 1	UPLOAD DATE: 6/25/2025	