

1 Port USB to RS232 Serial DB9/DB25 Adapter Cable - M/M

ICUSB232DB25



*actual product may vary from photos

DE: Bedienungsanleitung - de.startech.com

FR: Guide de l'utilisateur - fr.startech.com

ES: Guía del usuario - es.startech.com

IT: Guida per l'uso - it.startech.com

NL: Gebruiksaanwijzing - nl.startech.com

PT: Guia do usuário - pt.startech.com

For the most up-to-date information, please visit: www.startech.com

Table of Contents

| | |
|-----------------------------------|----------|
| Introduction | 1 |
| Packaging Contents | 1 |
| System Requirements..... | 1 |
| Installation | 2 |
| Driver Installation..... | 2 |
| Hardware Installation | 2 |
| Verifying Installation..... | 2 |
| Specifications | 3 |
| Technical Support | 4 |
| Warranty Information | 4 |

Introduction

The StarTech.com USB to RS232 DB9 or DB25 Serial Adapter Cable lets you add an RS232 serial port to a notebook or desktop computer through Plug and Play USB. This 3ft USB to RS232 Serial Adapter Cable lets you connect 9-pin or 25-pin (through included adapter) RS232 serial devices to bridge the compatibility gap between modern computers without serial ports and legacy serial peripherals. A cost-effective solution that is backed by StarTech.com's 2-year warranty.

Packaging Contents

- ICUSB232DB25 adapter cable
- DB9 to DB25 Adapter
- Driver Installation CD
- Instruction Manual

System Requirements

- USB enabled computer system with available USB port
- Microsoft® Windows® XP/Server 2003/Vista/Server 2008 R2/7 (32/64-bit), or Windows XP Embedded/CE 4.2/5.2, or Windows Mobile 5/6, or PocketPC 2003, or Apple® Mac OS® 10.1 or later, or Linux®



Installation

Driver Installation

Windows XP/Server 2003/Vista/Server 2008 R2/7

1. Turn the computer on and boot into Windows. Do not have the USB adapter plugged into the computer.
2. Insert the Driver CD into your CD/DVD drive. If AutoPlay runs, then choose to “Browse the CD”, otherwise access the contents of the CD via “My Computer”.
3. In the “Prolific/PL2303X” location, open the appropriate folder for your operating system and run the setup.exe file. This will launch the driver installation wizard.
4. Once the installation wizard completes, the drivers will be installed and ready for use.

Hardware Installation

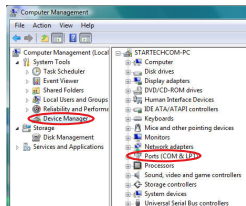
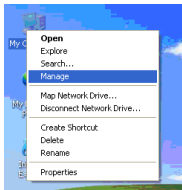
1. Make sure the driver installation has been completed first.
2. Plug the USB adapter into an available USB port on the computer system.
3. Windows will automatically detect the USB adapter and install the drivers.
4. Once installation is complete, the serial port will be ready for use.
5. If connecting the serial port to a DB25 interface, use the included DB9 to DB25 (male) adapter.

Verifying Installation

Windows XP/Server 2003/Vista/Server 2008 R2/7

From the main desktop, right-click on “My Computer” (“Computer” in Vista/7), then select Manage. In the new Computer Management window, select Device Manager from the left window panel.

Double-click on the “Ports (COM & LPT)” option. The additional COM port should be visible.



Specifications

| | |
|-------------------------------------|---|
| Bus Interface | USB 2.0 |
| Chipset ID | Prolific PL2302HXD |
| Connectors | 1 x 9-pin DB9 male 1 x USB type A male |
| Supported Protocols | RS232 |
| Maximum Data Transfer Rate | 230Kbps |
| FIFO Buffer | 512B |
| Integrated Cable Length | 90cm/3ft |
| Operating Temperature | 0°C ~ 60°C (32°F ~ 140°F) |
| Storage Temperature | -20°C ~ 80°C (-4°F ~ 176°F) |
| Humidity | 0 ~ 90% RH |
| Compatible Operating Systems | Windows XP/Server 2003/Vista/Server 2008 R2/7 (32/64-bit), Windows XP Embedded/CE 4.2/5.2, Windows Mobile 5/6, PocketPC 2003, Mac OS 10.1 or later, Linux |

Technical Support

StarTech.com's lifetime technical support is an integral part of our commitment to provide industry-leading solutions. If you ever need help with your product, visit www.startech.com/support and access our comprehensive selection of online tools, documentation, and downloads.

For the latest drivers/software, please visit www.startech.com/downloads

Warranty Information

This product is backed by a two year warranty.

In addition, StarTech.com warrants its products against defects in materials and workmanship for the periods noted, following the initial date of purchase. During this period, the products may be returned for repair, or replacement with equivalent products at our discretion. The warranty covers parts and labor costs only. StarTech.com does not warrant its products from defects or damages arising from misuse, abuse, alteration, or normal wear and tear.

Limitation of Liability

In no event shall the liability of StarTech.com Ltd. and StarTech.com USA LLP (or their officers, directors, employees or agents) for any damages (whether direct or indirect, special, punitive, incidental, consequential, or otherwise), loss of profits, loss of business, or any pecuniary loss, arising out of or related to the use of the product exceed the actual price paid for the product. Some states do not allow the exclusion or limitation of incidental or consequential damages. If such laws apply, the limitations or exclusions contained in this statement may not apply to you.

Hard-to-find made easy. At StarTech.com, that isn't a slogan. It's a promise.

StarTech.com is your one-stop source for every connectivity part you need. From the latest technology to legacy products — and all the parts that bridge the old and new — we can help you find the parts that connect your solutions.

We make it easy to locate the parts, and we quickly deliver them wherever they need to go. Just talk to one of our tech advisors or visit our website. You'll be connected to the products you need in no time.

Visit www.startech.com for complete information on all StarTech.com products and to access exclusive resources and time-saving tools.

StarTech.com is an ISO 9001 Registered manufacturer of connectivity and technology parts. StarTech.com was founded in 1985 and has operations in the United States, Canada, the United Kingdom and Taiwan servicing a worldwide market.