

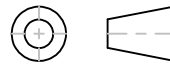
DB9M Pinouts

1	DCD (IN)
2	TXD (OUT)
3	RXD (IN)
4	DSR (IN)
5	GND (GND)
6	DTR (OUT)
7	CTS (IN)
8	RTS (OUT)
9	RI (IN)

USB Wiring

Pin	Wire Color	AWG	Signals
1	Red	24	VCC
2	White	28	D-
3	Green	28	D+
4	Black	24	GND
S	Silver	Drain Wire	GND

THIRD ANGLE PROJECTION



GENERAL NOTES

DIMENSIONS ARE IN MM - DO NOT SCALE
 THIS DOCUMENT CONTAINS CONFIDENTIAL,
 PROPRIETARY INFORMATION THAT IS
 PROPERTY OF STARTECH.COM

StarTech.com

PRODUCT ID ICUSB232FTN

DESCRIPTION USB to Serial RS232 Adapter - DB9 Serial DCE Adapter Cable with FTDI - Null Modem - USB 1.1 / 2.0 - Bus-Powered

DO NOT SCALE

SHEET: 1 OF: 1

UPLOAD DATE: 3/05/2025