

Half-Height Mini PCI Express 300Mbps Wireless N Adapter- 2T2R

MPEX300WN2X2

DE: Bedienungsanleitung - de.startech.com

FR: Guide de l'utilisateur - fr.startech.com

ES: Guía del usuario - es.startech.com

IT: Guida per l'uso - it.startech.com

NL: Gebruiksaanwijzing - nl.startech.com

PT: Guia do usuário - pt.startech.com

Packaging Contents

- 1 x Wireless Card
- 1 x Driver CD
- 1 x Instruction Manual

System Requirements

- Available Mini PCI Express expansion slot (half-height)
- Windows® 8 (32/64bit), 7 (32/64), Vista(32/64), XP(32/64), Windows® Server 2008 R2, 2003(32/64), Linux

Installation

Hardware Installation

WARNING! Mini PCI Express cards, like all computer equipment, can be severely damaged by static electricity. Be sure that you are properly grounded before opening your computer case or touching your Mini PCI Express card. StarTech.com recommends that you wear an anti-static strap when installing any computer component. If an anti-static strap is unavailable, discharge yourself of any static electricity build-up by touching a large grounded metal surface (such as the computer case) for several seconds. Also be careful to handle the Mini PCI Express card by its edges and not the gold connectors.

1. Line up and insert the Mini PCI Express card into the Mini PCI Express slot on the system board. Make sure to match up the gap in the card edge connector, with the notch in the slot.
2. Secure the card to the motherboard using screws or clips, as required by your motherboard.

NOTE: Different systems may have different methods for installing Mini Cards, so please refer to documentation for your system/board for more specific installation instructions for your particular application.

3. Attach the wireless antenna cables to the Mini PCI Express card.

Driver Installation

Windows

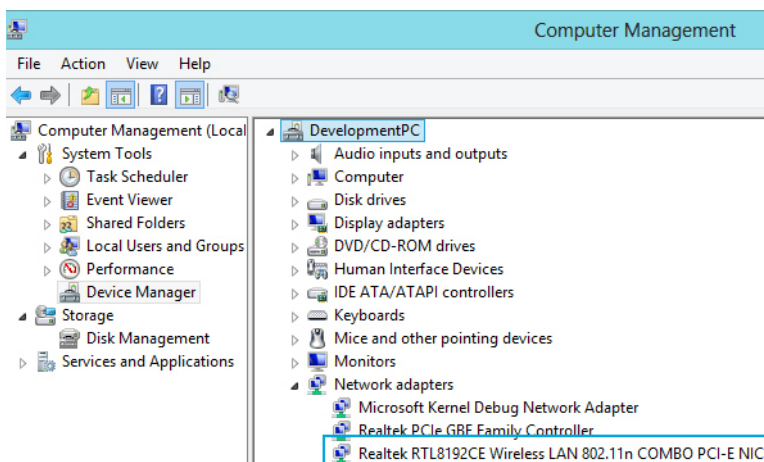
NOTE: The wireless card may auto-install using native drivers, however it is recommended to use the procedure below to update to the latest version.

1. Upon starting Windows, if the Found New Hardware wizard appears on the screen, cancel/close the window and insert the included Driver CD into the computer's CD/DVD drive.
2. Navigate to your CD/DVD drive, then to the "Windows" folder and run the Setup.exe application to launch the installer.
3. Follow the on-screen instructions to complete the installation.

Verifying Installation

Windows

1. Open the Device Manager by right-clicking on Computer, and then select Manage. In the new Computer Management window, select Device Manager from the left window panel (For Windows 8, open the Control Panel and select Device Manager).
2. Expand the "Network Adapters" section. On a successful install, you should following devices in the list with no exclamation points or question marks.



Specifications

Host Interface	Mini PCI Express x1 (52 pin)
Form Factor	Half-height
Chipset	Realtek - RTL8192CE
Supported Standards	IEEE 802.11b, IEEE 802.11g, IEEE 802.11n
Max Data Transfer Rate	300 Mbps
Antenna Configuration	2x2:2(TxR:S)
Wireless Frequencies	2.4 GHz~2.484 GHz
Wireless Transmit Power	15dBm (Max)
Supported Security Schemes	WEP, WPA, WPA2
Operating Temperature	0°C to 40°C (32°F to 104°F)
Storage Temperature	-40°C to 70°C (-40°F ~ 158°F)
Humidity	10~90% RH (Non-Condensing)
Dimensions	30 x 26.5 x 3mm
Compatible Operating Systems	Windows® 8 (32/64bit), 7 (32/64), Vista(32/64), XP(32/64), Windows® Server 2008 R2, 2003(32/64) or Linux

FCC Compliance Statement

This equipment has been tested and found to comply with the limits for a Class B digital device, pursuant to part 15 of the FCC Rules. These limits are designed to provide reasonable protection against harmful interference in a residential installation. This equipment generates, uses and can radiate radio frequency energy and, if not installed and used in accordance with the instructions, may cause harmful interference to radio communications. However, there is no guarantee that interference will not occur in a particular installation. If this equipment does cause harmful interference to radio or television reception, which can be determined by turning the equipment off and on, the user is encouraged to try to correct the interference by one or more of the following measures:

- Reorient or relocate the receiving antenna.
- Increase the separation between the equipment and receiver.
- Connect the equipment into an outlet on a circuit different from that to which the receiver is connected.
- Consult the dealer or an experienced radio/TV technician for help.

This Class [B] digital apparatus complies with Canadian ICES-003.

Cet appareil numérique de la classe [B] est conforme à la norme NMB-003 du Canada.

Industry Canada

This device complies with RSS-210 of the Industry Canada Rules. Operation is subject to the following two conditions:

(1) This device may not cause harmful interference, and (2) this device must accept any interference received, including interference that may cause undesired operation.

Ce dispositif est conforme à la norme CNR-210 d'Industrie Canada applicable aux appareils radio exempts de licence. Son fonctionnement est soumis aux deux conditions suivantes :

(1) cet appareil ne doit pas causer d'interférences nuisibles, et (2) cet appareil doit accepter toute autre interférence reçue, y compris les interférences pouvant entraîner un fonctionnement non désiré.

IC statement CAN ICES-3 (B)/NMB-3(B)

FCC ID: X2NBL-LW08-5

IC: 11232A-MPEX300WN2X

Use of Trademarks, Registered Trademarks, and other Protected Names and Symbols

This manual may make reference to trademarks, registered trademarks, and other protected names and/or symbols of third-party companies not related in any way to StarTech.com. Where they occur these references are for illustrative purposes only and do not represent an endorsement of a product or service by StarTech.com, or an endorsement of the product(s) to which this manual applies by the third-party company in question. Regardless of any direct acknowledgement elsewhere in the body of this document, StarTech.com hereby acknowledges that all trademarks, registered trademarks, service marks, and other protected names and/or symbols contained in this manual and related documents are the property of their respective holders.

Technical Support

StarTech.com's lifetime technical support is an integral part of our commitment to provide industry-leading solutions. If you ever need help with your product, visit www.startech.com/support and access our comprehensive selection of online tools, documentation, and downloads.

For the latest drivers/software, please visit www.startech.com/downloads

Warranty Information

This product is backed by a two year warranty.

In addition, StarTech.com warrants its products against defects in materials and workmanship for the periods noted, following the initial date of purchase. During this period, the products may be returned for repair, or replacement with equivalent products at our discretion. The warranty covers parts and labor costs only. StarTech.com does not warrant its products from defects or damages arising from misuse, abuse, alteration, or normal wear and tear.

Limitation of Liability

In no event shall the liability of StarTech.com Ltd. and StarTech.com USA LLP (or their officers, directors, employees or agents) for any damages (whether direct or indirect, special, punitive, incidental, consequential, or otherwise), loss of profits, loss of business, or any pecuniary loss, arising out of or related to the use of the product exceed the actual price paid for the product. Some states do not allow the exclusion or limitation of incidental or consequential damages. If such laws apply, the limitations or exclusions contained in this statement may not apply to you.