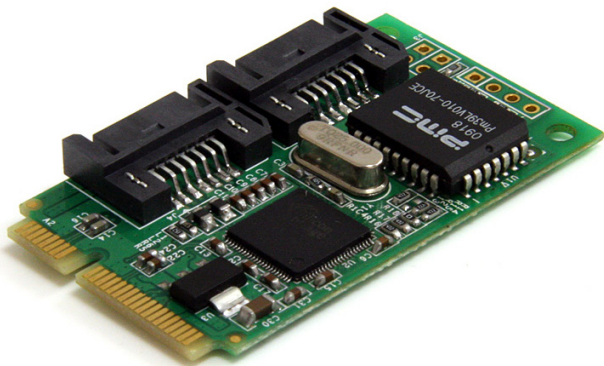


2-Port Mini PCI Express to Internal SATA Controller Card

MPEXSATA22I



*actual product may vary from photo

DE: Bedienungsanleitung - de.startech.com

FR: Guide de l'utilisateur - fr.startech.com

ES: Guía del usuario - es.startech.com

IT: Guida per l'uso - it.startech.com

NL: Gebruiksaanwijzing - nl.startech.com

PT: Guia do usuário - pt.startech.com

For the most up-to-date information, please visit: www.startech.com

FCC Compliance Statement

This equipment has been tested and found to comply with the limits for a Class B digital device, pursuant to part 15 of the FCC Rules. These limits are designed to provide reasonable protection against harmful interference in a residential installation. This equipment generates, uses and can radiate radio frequency energy and, if not installed and used in accordance with the instructions, may cause harmful interference to radio communications. However, there is no guarantee that interference will not occur in a particular installation. If this equipment does cause harmful interference to radio or television reception, which can be determined by turning the equipment off and on, the user is encouraged to try to correct the interference by one or more of the following measures:

- Reorient or relocate the receiving antenna.
- Increase the separation between the equipment and receiver.
- Connect the equipment into an outlet on a circuit different from that to which the receiver is connected.
- Consult the dealer or an experienced radio/TV technician for help.

Use of Trademarks, Registered Trademarks, and other Protected Names and Symbols

This manual may make reference to trademarks, registered trademarks, and other protected names and/or symbols of third-party companies not related in any way to StarTech.com. Where they occur these references are for illustrative purposes only and do not represent an endorsement of a product or service by StarTech.com, or an endorsement of the product(s) to which this manual applies by the third-party company in question. Regardless of any direct acknowledgement elsewhere in the body of this document, StarTech.com hereby acknowledges that all trademarks, registered trademarks, service marks, and other protected names and/or symbols contained in this manual and related documents are the property of their respective holders.

Table of Contents

Introduction	1
Packaging Contents	1
System Requirements.....	1
Installation	2
Hardware Installation	2
Driver Installation.....	2
Verifying Installation	4
Specifications	5
Technical Support	6
Warranty Information	6

Introduction

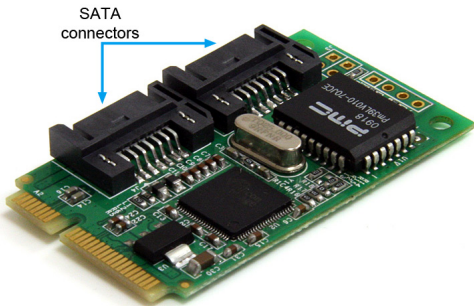
The MPEXSATA22I 2-Port Mini PCIe to SATA Controller Card lets you add 2 SATA 3Gbps connectors to a small form factor or embedded system, through a Mini PCI Express expansion slot. Perfect for upgrading the capabilities of a system that would typically have a very limited number of internal ports, the Mini PCIe to SATA controller card is compatible with all types of Serial ATA devices, including hard drives (HDDs), Solid State Drives (SSD), and optical drives (CD/DVD/BD). A versatile solution for storage applications, this SATA controller card features built-in RAID support (JBOD, BIG, RAID 0, RAID 1), and is backed by a StarTech.com 1-year warranty and free lifetime technical support.

Packaging Contents

- 1 x Mini PCIe adapter card
- 2 x SATA cable
- 1 x Driver CD
- 1 x Instruction Manual

System Requirements

- PCI Express enabled computer system with available mini PCIe slot
- Microsoft® Windows® 2000/XP/Server 2003/Vista/Server 2008 R2/7 (32/64-bit), or Apple® Mac OS® 10.4.9/10.4.10/10.5.1, or Linux®



Installation

WARNING! Mini PCI Express cards, like all computer equipment, can be severely damaged by static electricity. Be sure that you are properly grounded before opening your computer case or touching your Mini PCI Express card. StarTech.com recommends that you wear an anti-static strap when installing any computer component. If an anti-static strap is unavailable, discharge yourself of any static electricity build-up by touching a large grounded metal surface (such as the computer case) for several seconds. Also be careful to handle the Mini PCI Express card by its edges and not the gold connectors.

Hardware Installation

1. Line up and insert the Mini PCI Express adapter card with the Mini PCI Express slot on the system board. Match up the gap in the card connector, with the notch in the slot.
2. Securely fasten the card to the motherboard.

NOTE: Different systems may have different methods for installing mini cards, so please refer to documentation for your system/board for full installation instructions for your particular application.

3. Connect SATA cables from the connectors on the adapter card to the SATA peripheral device(s).

Driver Installation

Windows 2000/XP/Server 2003 - Fresh OS Install

NOTE: These operating systems will require a 3.5" floppy disk drive to install drivers for storage controller cards. Make sure a floppy drive is installed in the computer system and the driver files from the Driver Installation CD are properly copied onto a floppy disk.

1. Power up the computer system and insert the Windows Installation CD.
2. Boot from the CD and when prompted, press the [F6] key to install 3rd party drivers.
3. When prompted, insert the floppy disk with the drivers into the floppy drive and follow the prompts.
4. Once the drivers are loaded, proceed with the Windows installation.

Windows 2000/XP/Server 2003

1. When the Found New Hardware wizard appears on the screen, insert the Driver CD into your CD/DVD drive. If you are prompted to connect to Windows Update, please select the "No, not this time" option and click Next.

2. Select the option “Install Drivers Automatically (Recommended)” and then click the Next button.
3. Windows should now start searching for the drivers. Once this has completed, click the Finish button.

Windows Vista/7/Server 2008 R2 - Fresh OS Install

1. Power up the computer system and insert the Windows Installation DVD.
2. Boot from the DVD and follow the installation instructions, until reaching the screen to select the destination disk/partition.
3. Click the “Load Drivers” button and insert the Driver Installation CD and browse to the location of the drivers on the CD.
4. Once the drivers are installed, the drive(s) connected to the controller card should now be visible.
5. Proceed with the rest of the Windows installation.

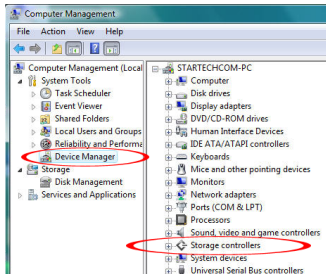
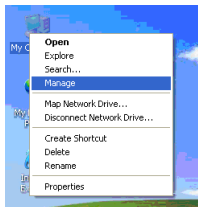
Windows Vista/7/Server 2008 R2

1. When the Found New Hardware window appears on the screen, click on the “Locate and install drivers software (recommended)” option. If prompted to search online, select the “Don’t search online” option.
2. When prompted to insert the disc, insert the Driver CD that came with the card, into your CD/DVD drive and Windows will automatically proceed to search the CD.
3. If a Windows Security dialog window appears, click the “Install this driver software anyway” option to proceed.
4. Once the driver is installed, click the Close button.

Verifying Installation

Windows 2000/XP/Server 2003/Vista/7

From the main desktop, right-click on “My Computer” (“Computer” in Vista/7), then select Manage. In the new Computer Management window, select Device Manager from the left window panel.



Double-click on the “SCSI and RAID Controllers” option (“Storage Controllers” in Vista/7). There should be a device listed that contains “Silicon Image Sil3132” or similar in it’s name.

Specifications

Host Interface	PCI Express Mini Card revision 1.2
Form Factor	Full Length Mini PCI Express
Supported Standards	SATA revision 2.5
Chipset ID	Silicon Image Sil3132CNU
Internal Connectors	2 x SATA 7-pin
Maximum Data Transfer Rate	SATA: 3.0 Gbps
Supported RAID Modes	0, 1, BIG (concatenation), JBOD (single)
Operating Temperature	0°C ~ 70°C (32°F ~ 158°F)
Storage Temperature	-65°C ~ 150°C (-85°F ~ 302°F)
Dimensions	50.0mm x 30.0mm x 4.0mm
Weight	7.8g
Compatible Operating Systems	Windows 2000/XP/Server 2003/Vista/ Server 2008 R2/7 (32/64-bit), Mac OS 10.4.9/10.4.10/10.5.1, Linux

Technical Support

StarTech.com's lifetime technical support is an integral part of our commitment to provide industry-leading solutions. If you ever need help with your product, visit www.startech.com/support and access our comprehensive selection of online tools, documentation, and downloads.

Warranty Information

This product is backed by a one year warranty.

In addition, StarTech.com warrants its products against defects in materials and workmanship for the periods noted, following the initial date of purchase. During this period, the products may be returned for repair, or replacement with equivalent products at our discretion. The warranty covers parts and labor costs only. StarTech.com does not warrant its products from defects or damages arising from misuse, abuse, alteration, or normal wear and tear.

Limitation of Liability

In no event shall the liability of StarTech.com Ltd. and StarTech.com USA LLP (or their officers, directors, employees or agents) for any damages (whether direct or indirect, special, punitive, incidental, consequential, or otherwise), loss of profits, loss of business, or any pecuniary loss, arising out of or related to the use of the product exceed the actual price paid for the product. Some states do not allow the exclusion or limitation of incidental or consequential damages. If such laws apply, the limitations or exclusions contained in this statement may not apply to you.

Hard-to-find made easy. At StarTech.com, that isn't a slogan. It's a promise.

StarTech.com is your one-stop source for every connectivity part you need. From the latest technology to legacy products — and all the parts that bridge the old and new — we can help you find the parts that connect your solutions.

We make it easy to locate the parts, and we quickly deliver them wherever they need to go. Just talk to one of our tech advisors or visit our website. You'll be connected to the products you need in no time.

Visit www.startech.com for complete information on all StarTech.com products and to access exclusive resources and time-saving tools.

StarTech.com is an ISO 9001 Registered manufacturer of connectivity and technology parts. StarTech.com was founded in 1985 and has operations in the United States, Canada, the United Kingdom and Taiwan servicing a worldwide market.