

KVM Console to USB 2.0 Portable Laptop Crash Cart Adapter with File Transfer & Video Capture

NOTECONS02



*actual product may vary from photos

DE: Bedienungsanleitung - de.startech.com

FR: Guide de l'utilisateur - fr.startech.com

ES: Guía del usuario - es.startech.com

IT: Guida per l'uso - it.startech.com

NL: Gebruiksaanwijzing - nl.startech.com

PT: Guia do usuário - pt.startech.com

For the most up-to-date information, please visit: www.startech.com

FCC Compliance Statement

This equipment has been tested and found to comply with the limits for a Class B digital device, pursuant to Part 15 of the FCC Rules. These limits are designed to provide reasonable protection against harmful interference in a residential installation. This equipment generates, uses, and can radiate radio frequency energy and, if not installed and used in accordance with the instructions, may cause harmful interference to radio communications. However, there is no guarantee that interference will not occur in a particular installation. If this equipment does cause harmful interference to radio or television reception, which can be determined by turning the equipment off and on, the user is encouraged to try to correct the interference by one or more of the following measures:

- Reorient or relocate the receiving antenna.
- Increase the separation between the equipment and receiver.
- Connect the equipment to an outlet on a different circuit than the receiver.
- Consult the dealer or an experienced radio/TV technician for help.

Any changes or modifications not expressly approved by the party responsible for compliance could void the user's authority to operate the device. If shielded interface cables are included with the product, or if additional components or accessories are designated for use with the installation, they must be used to ensure compliance with FCC regulations.

Use of Trademarks, Registered Trademarks, and other Protected Names and Symbols

This manual may make reference to trademarks, registered trademarks, and other protected names and/or symbols of third-party companies not related in any way to StarTech.com. Where they occur these references are for illustrative purposes only and do not represent an endorsement of a product or service by StarTech.com, or an endorsement of the product(s) to which this manual applies by the third-party company in question. Regardless of any direct acknowledgement elsewhere in the body of this document, StarTech.com hereby acknowledges that all trademarks, registered trademarks, service marks, and other protected names and/or symbols contained in this manual and related documents are the property of their respective holders.

Table of Contents

Introduction	1
Packaging Contents	1
System Requirements.....	1
Installation	2
Hardware Installation	3
LED Indicators.....	3
Operation	4
Toolbar	4
Zoom Menu.....	6
Video Menu	7
File Transfer Menu	13
Keyboard Menu	15
Mouse Menu	16
Toolbar Menu	18
Toubleshooting	19
Specifications	20
Technical Support	21
Warranty Information	21

Introduction

You must install the provided software on the laptop to be able to use the USB Crash Cart Adapter. No changes are needed on the server(s) being controlled. The USB Crash Cart Adapter can be connected or disconnected any time you wish. The software does not need to be started first, nor do you need to shut it down before unplugging the USB Crash Cart Adapter.

Packaging Contents

- 1 x USB Crash Cart Adapter
- 1 x USB A to Mini-B cable

System Requirements

Notebook Requirements

- USB 2.0 enabled notebook computer
- 20MB available hard drive space
- 24-bit capable display
- Windows® XP, Vista, 7, 8, 8.1, 10, 11; Windows Server® 2008 R2, 2012, 2012 R2, 2016, 2019, 2022; macOS 10.9 to 10.15, 11.0, 12.0, 13.0, 14.0, 15.0; Linux 2.6 and up - LTS Versions only

Server Requirements

- VGA enabled video card (DVI supported via optional DVIVGAMF adapter)
- USB keyboard and mouse support

Installation

Windows

Drivers and software must be installed on the computer before you connect the USB Crash Adapter. To install the software, complete the following:

1. Download the latest drivers from the StarTech.com website, <https://www.startech.com/NOTECONS02>.

Note: Windows typically saves the files to the Downloads folder that is associated with your user account (for example, C:\Users\your_name\Downloads)

2. When the download is complete, right-click the zip folder that you downloaded, click Extract All, and follow the on-screen instructions.
3. In the list of extracted files, navigate to the Windows folder, rightclick the Setup.exe file and click Run as Administrator.

Note: If the Run as Administrator option is not available, you might be attempting to run the installer from within the zipped file. Extract the files using the instructions in step 2.

4. Windows should find the device driver files and install them automatically. This is a one-time step.
5. Follow the on-screen prompts to install the device drivers and software.

macOS

Drivers and software must be installed on the computer before you connect the USB Crash Adapter. To install the software, complete the following:

1. Download the latest drivers from the StarTech.com website, <https://www.startech.com/NOTECONS02>.

Note: macOS will typically save the files to the Downloads folder that is associated with your user account (for example, hard_drive_name\Users\your_name\Downloads).

2. Double-click the Software Pack.zip file.
3. Double-click the Install.dmg file.
4. Double-click USB Crash Cart Adapter.
5. The program is now located on the desktop and is ready to run.

Hardware Installation

Once the drivers and software for the USB Crash Cart Adapter are installed on the notebook computer, it can be plugged into the server.

Connect the attached VGA cable and the USB type A cable into the desired server. For DVI-I (analog) computer systems, please use a DVI to VGA adapter (StarTech.com ID: DVIVGAMF).



LED Indicators

Server KB/Mouse: This lights up when the emulated USB keyboard/mouse is working. It will blink briefly whenever the emulated mouse moves, or emulated key is pressed. Constant flashing indicates some problem with the USB connection to the server. This can happen if disconnected, or if the host's operating system is not enumerating the USB device.

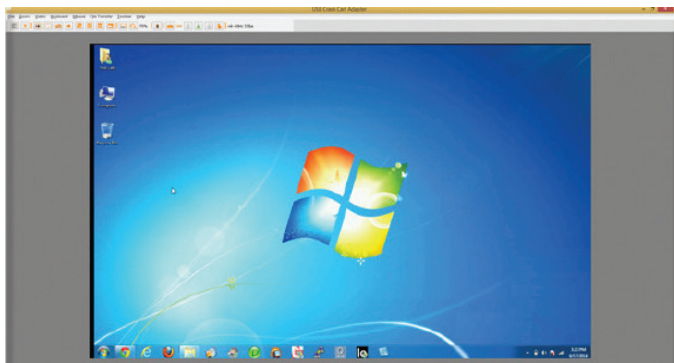
Server VGA: This indicates a valid VGA video signal is being received. It will be off if nothing is connected (and in some power saving modes) and may flash if an unsupported video mode or other trouble is seen with the video signal. This light will not turn on, regardless of the video input status, until the adapter is connected to the application software at least once.

User Console Link/Activity: This lights up when a good connection to the laptop is established. If flashing, it indicates the USB to the laptop is not connected or being ignored. Blinks briefly when video data is sent to the laptop.

If all the lights are off, then this means the USB Crash Cart Adapter has no power from either USB connection. Under normal operation, either USB port can provide enough power to operate the unit. The USB keyboard/mouse emulation is always active, even if the laptop USB is disconnected.

Operation

Once connected, the real-time video from the attached host computer is shown centered in the main window.



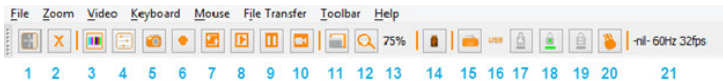
Toolbar

There is an optional toolbar along the top edge of the window. This toolbar may be hidden, detached or dragged onto the other three edges of the window. It provides a number of shortcuts and some status information. All functions are duplicated in the pull down menus across the top of your screen, so it is optional.

You can move and/or detach the toolbar by dragging the handle on the left/top edge. Once detached, the red X or circle in the upper corners can be used to close it. When dragging or moving the toolbar, you can stick it (dock) to the top/bottom edge, if in horizontal mode, or left/right edges if vertical. Some of these features are available in the Toolbar menu as well.

The right most status area of the toolbar reports some statistics while the system is running. The first number is the USB bandwidth, in bits per second. When no motion is detected by our hardware video compression, no bits are sent. Noisy video cards and ongoing video animations, will cause a constant stream of USB traffic.

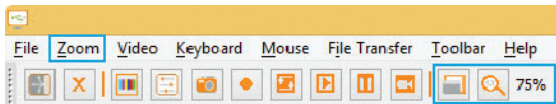
The next two numbers (ex. 30Hz and 44fps) report the achieved frame rates for the hardware and software components respectively. The hardware number (Hz) will range from 1 to 85Hz, but is typically 30Hz or 60Hz. The software number is limited to 60 fps (frames per second) maximum and varies depending what other software on your laptop is doing.



From left to right:


1. Change orientation of tool bar between horizontal (shown) and vertical.
2. Quit the Pocket Console application immediately.
3. Fine-tune video picture.
4. Open Video-related settings window.
5. Take a screenshot, save as PNG, JPG, BMP file.
6. Record (Video Capture)
7. Loop Record (Video Capture)
8. Play previously recorded video
9. Pause playback
10. Make a Movie (.avi file) out of previously recorded video
11. Toggle full-screen vs. windowed mode.
12. Go to 100% zoom, or largest possible.
13. (50%) Shows current zoom factor as a percentage.
14. Disk control (file transfer) icon
15. Keyboard status (red X shown if there is an issue). Click to open special keys window.
16. (USB) USB mode for keyboard.
17. Caps lock indicator/button (green if active, shown inactive). Click to simulate pressing caps lock.
18. Num lock indicator/button.
19. Scroll lock indicator/button.
20. Send Ctrl-Alt-Del to the server.
21. Status area. Shows USB bandwidth, hardware and software frame rates.

Zoom Menu



In the Zoom menu there are a number of options to set the zoom factor and resize the window to achieve that zoom factor. For example, if the attached server is running at XGA resolution (1024 x 768), and you select 50% zoom, the main window will be set to a size of approximately 512 x 384.

Note: Please keep in mind that not all zoom factors will be possible, as some notebook screens are too small for the larger percentages. If so, the software will resize to the largest window possible.

Since many notebooks have smaller screens, you may wish to run this program maximized. Full-screen mode is supported, where the window decorations are removed and other applications are hidden. Click on the full-screen/window icon () on the toolbar or select it from the Zoom menu.

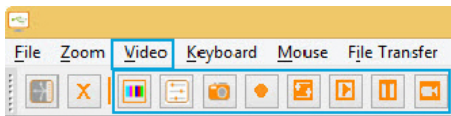
To get out of full screen mode, click the icon again. If the toolbar is disabled when you enter full-screen mode, a smaller toolbar is provided with only the Fullscreen and Quit options. This toolbar floats and may be moved out of your way, but cannot be hidden completely.

Also in the Zoom menu is an option to center the window on the screen. This can be handy when it is off the edge of the screen. There is also a shortcut for maximize (toggle). This is the same as clicking the maximize button in the title bar of the main window.

Other Notes

- If the laptop is widescreen (16:10 aspect, or 1280x800, etc), it may be helpful to locate the toolbar along the left or right vertical edge. This provides more usable screen height, and if the server's screen is square (4:3 aspect) the left and right vertical edges would not be used.
- This program will not enlarge video, only shrink it. Therefore, text mode (720x480 or similar) will not be enlarged to fill your screen.
- The toolbar is automatically disabled when you select a Zoom factor below 50%. You need to enable it manually when you return to a larger size.
- Unusable parts of the window are shown in grey. This happens because the video is scaled by an integer factor of 1/16 and due to other rounding issues.

Video Menu

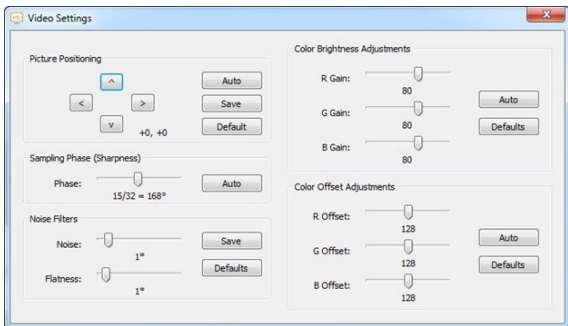


There are a number of options available under the Video menu, including: Auto fine-tune picture, Video Settings, Video capture and Save PNG snapshot.

Auto fine-tune picture

Use to automatically adjust the sampling phase of the video. This makes the picture sharper and reduces USB traffic. This is generally not required since this operation is automatically performed when video is applied. The picture will freeze for about one second while the calibration is performed.

Video Settings



Picture Positioning - These four arrows may be used to fine-tune the position of the video image, similar to the centering controls found on video monitors. The adjusted values will be used automatically whenever this same video mode is seen again. The **Auto** button will attempt to automatically center the video image within the program window. Click **Save** to keep your changes.

Sampling Phase (Sharpness) - This slider allows you to override the automatic phase adjustment. Press **Auto** to perform auto phase again. The numbers shown under the slider are the phase (angle) of the control. Click **Save** to keep your changes.

Noise Filters - The hardware implements two filters to reduce USB traffic and improve picture quality. By default they are both enabled and set to one. You may override and save customized settings (which will apply to all video modes).

The first 'Noise' filter helps to remove speckle noise. There is usually no visual effect to this filter, except that at high values, moving the mouse may leave some pixels behind.

The second 'Flatness' filter converts regions that are nearly all the same color into exactly the same color to aid with compression. At higher values, color banding will be much more visible. Click **Save** to keep your changes.

Color Brightness – Adjust the sliders to fix dark or over-saturated color. The **Auto** button will attempt to automatically adjust the color for you. The **Default** button will return the sliders to their factory-set positions.

Color Offset Adjustments – Adjust the sliders to fix black levels in the image. The **Auto** button will attempt to automatically adjust the levels for you. The **Default** button will return the sliders to their factory-set positions.

Save PNG snapshot

Use this function to take a screenshot of the current window contents and save it into a PNG, JPG or BMP file. The snapshot happens as soon as the menu item (or toolbar button) is clicked. You are then given a chance to choose where the image file should be stored. A default filename is provided based on the current time.

Snapshots are always stored at full resolution and contain the whole screen.

Capture Video Mode Details

Displays and then saves the current video mode settings used on the server to a text file.

DDC

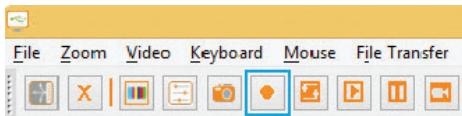
Sets the default maximum video resolution on the USB Crash Cart Adapter.

Video Capture

Record

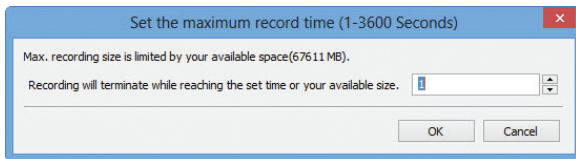
The record function captures the current display until stopped by the user, or until the user-defined period is reached (functions only when the NOTECONS02 is connected).

Clicking the Record button or selecting Video > Record from the drop-down menu will bring up a dialog box where you can choose a destination folder where the recorded files will be stored.



Note: Ensure you have “read and write” access to your chosen destination folder, otherwise an error message will be displayed and recording will stop.

Recording can be stopped by either clicking the Record button again, or selecting Video > Record from the drop-down menu. Otherwise, the capture will continue until the user-defined time period is reached. After choosing your destination folder, set the maximum record time (1-3600 seconds; 3600 seconds = 1 Hour). Values outside the 1-3600 range will be automatically reset to 1 or 3600.

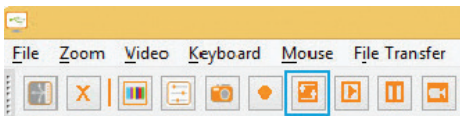


Note: The Playback / Pause, Make a Movie and File Transfer functions are disabled during video capture.

Loop Record

The Loop Record function continually captures the latest video in the user-defined duration until stopped (functions only when the NOTECONS02 is connected). This function is useful when you're not sure when you will capture the video you need, but don't want to capture hours of footage.

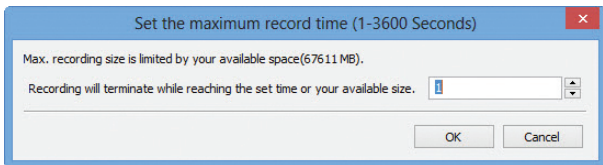
Clicking the Loop Record button or selecting Video > Loop Record from the drop-down menu will bring up a dialog box where you can choose a destination folder where the recorded files will be stored.



Note: Ensure you have “read and write” access to your chosen destination folder, otherwise an error message will be displayed and recording will stop.

Recording can be stopped by either clicking the Loop Record button again, or selecting Video > Loop Record from the drop-down menu.

After choosing your destination folder, set the maximum record time for each video (1-3600 seconds; 3600 seconds = 1 Hour). Values outside the 1-3600 range will be automatically reset to 1 or 3600. If the pre-set time is Y seconds, the final record time could be in the range of Y - 2Y seconds.

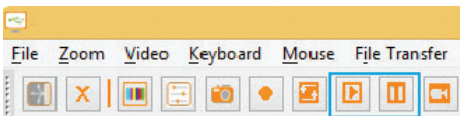


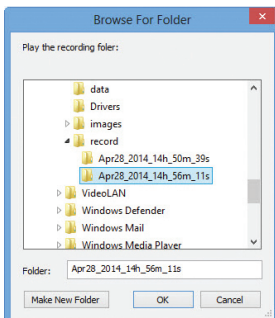
Note: The Playback / Pause, Make a Movie and File Transfer functions are disabled during video capture.

Playback/Pause

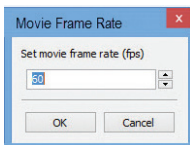
The Playback / Pause functions enable viewing of Recorded or Loop Recorded files (functions if the NOTECONS02 is connected or disconnected).

Clicking the Playback button or selecting Video->Playback from the drop-down menu will bring up a dialog box for you to choose which recorded folder you would like to play. Choose a valid record folder, which contains the private record files made by the NOTECONS02, starting with 0.out.





Next, choose the playback frame rate from 1 – 60 (The default of 30 is recommended for Windows systems, and 60 for Mac and Linux systems). The lower the frame rate, the slower the record is replayed, which means you will see more details.



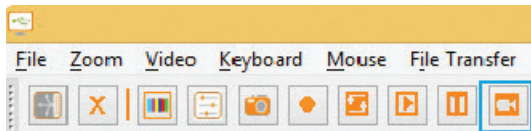
Click the Pause button or select Video > Pause from the drop-down menu to pause playback. Then click the button again to resume.

Note: The Record, Loop Record, Make a Movie and File Transfer functions are disabled during Playback.

Make a Movie

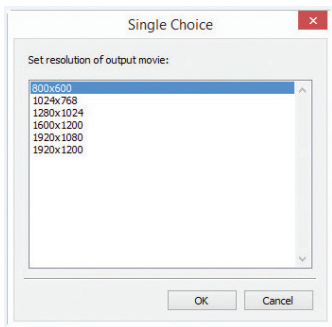
The Make a Movie function creates an .avi file from a previous Recorded or Loop Recorded files (functions if the NOTECONS is connected or disconnected).

Clicking the Movie icon or selecting Video > MakeMovie from the drop-down menu will bring up a dialog for you to choose a source folder. Choose a valid record folder, which contains the private record files made by the NOTECONS02, starting with 0.out.



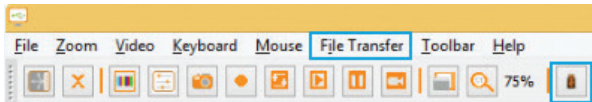
From the next window, choose the output resolution of the avi file.

Note: If the recording was created using a resolution larger than the chosen output resolution, the output movie may look squished.




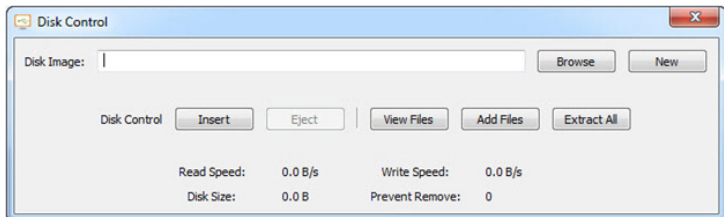
Note: The Record, Loop Record, Playback and File Transfer functions are disabled when using the Make a Movie function.

File Transfer Menu



File transfer works like a removable USB drive. Instead of a real drive, it creates a Disk Image on the host computer that holds the files. Only one computer at a time may access the image. When created (like plugging in the USB drive) the target computer can read and write to the disk image but the host cannot. The virtual USB drive can be used by any program or operating system without special drivers.

- Disk images are dynamic. E.g. If you create a 10GB disk and copy a 1MB file it will use only 1MB plus overhead. Large images are less efficient and may take up more space when copying many small files.
- Disk Images use the VHD format are compatible with Microsoft Windows and can be mounted by Windows Explorer.
- ISO CD-ROM and DVD images can also be used for read only storage. You can install an operating system without burning a real CD.
- You can also drag-and-drop files onto the video window to automatically copy files and create a temporary image (if none are selected).
- Press the disk icon () on the toolbar to open the **Disk Control** window.



Browse - Open an existing image file (supports dynamic VHD files and ISO images).

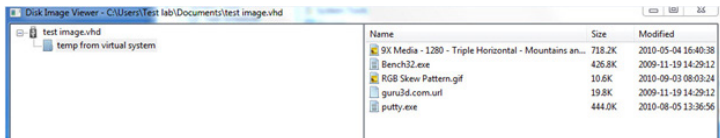
New - Create a new disk image (you will be prompted to specify your desired size).

Insert - Connect disk image to target computer. If no disk image is loaded it will create a temporary one. Temporary images will be deleted when the program closes.

Eject - Remove the disk image from the target computer.

View Files - Opens the Disk Image Viewer window to show the directory tree view and file list for the currently selected directory (pictured below). You can drag-and-drop files onto the file list to copy.

- Right-clicking a directory from the left pane will give you the option of Extracting the entire directory to a location on your connected host computer
- Right-clicking in the right pane gives you Extract, Delete and Add file operations, as well as the ability to create a New Directory



Add Files - Open up a file dialog to quickly add files. If no disk image is loaded it will create a temporary one.

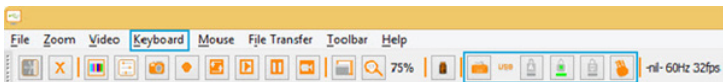
Extract All - Open a file dialog to extract the entire contents of the image to the host PC.

Read and Write speed - Shows current data transfer rate. Will be slower for many small files and faster for large files.


Disk Size - Size of currently inserted disk image.

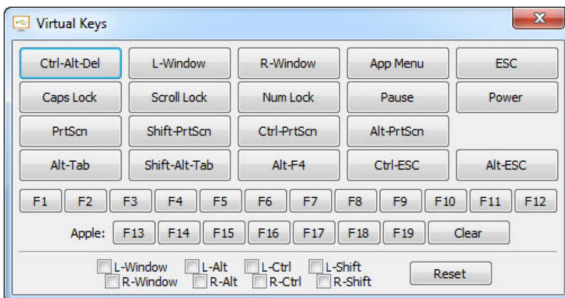
Prevent Remove - Shows a "1" to indicate that removal may damage file contents. Be sure to eject from operating system first.

Keyboard Menu



Most keystrokes are forwarded directly to the connected host computer. However, some special key combinations, such as Ctrl-Alt-Del, are blocked by the notebook's operating system.

Click on the keyboard icon of the toolbar () , or use the menu option **More special keys** to bring up a dialog box with common special key sequences that you can send manually.



At the bottom of this menu are checkboxes (toggle buttons) for each of the meta keys (both left and right). When checked, the key-down event is sent. When the checkbox is unchecked, the key-up event is sent. This means you can use them to compose complex sequences not shown on this screen. Use the Reset button to uncheck all boxes. Clicking any of the keys above the line also resets the checkboxes.

E.g. Checking L-Window and then using your keyboard to press the letter E will send Window+E (which starts Windows Explorer)

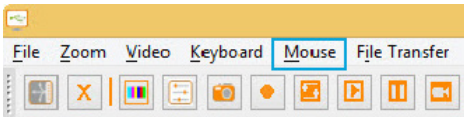
Note: The L-Window button at the top will send both a key-down and key-up signal, whereas the checkbox labeled L-Window at the bottom, will send a key-down when checked, and then a key-up only when cleared.

Simulate Hotplug (reset)

Clicking on this menu item will 'hotplug' the USB going to the host keyboard and mouse. Hot plugging simulates unplugging the USB cable and immediately reconnecting it. It will reset the USB keyboard and mouse emulation completely.

Note: When hot-plugging, the keyboard and mouse are not available until the host OS device driver re-initializes the emulated keyboard and mouse. During this period, a red X is shown over the keyboard icon on the toolbar.

Mouse Menu




Mouse related options are present in the **Mouse** menu; they affect the emulated USB mouse.

Disable mouse entirely

Although most scenarios may require the use of the notebook's pointing device (ie. touch pad), if you have a standard USB mouse with you, you might want connect it directly into the server instead of the notebook. The notebook screen and keyboard are still used in this configuration, but the mouse emulation is not, which avoids accidental touches on the laptop touchpad being registered as a click.

This configuration is also recommended when using the USB Crash Cart Adapter with USB KVM switches. USB KVM products generally cannot understand the USB mouse emulation device because of its advanced use of the HID (Human Interface Device) standard.

In this mode, the mouse cursor is shown as a circle with a line (). This is to remind you that clicks won't be effective in that window.

Changes to this setting will cause a USB hotplug event, and this setting will be remembered in the USB Crash Cart Adapter unit itself.

Swap Buttons (for lefties)

This simple toggle mode is useful for those who use their left hand to control the mouse. All it does is swap the ordering of the buttons, so that the left and right buttons are swapped.

This setting is remembered on the laptop. Please keep in mind that the operating system may also be swapping buttons to suit your preferences. It's not always clear how many swaps are needed, and which layer is doing the swapping. Experimentation is suggested.

To release captured mouse...

In absolute mouse mode, you may simply move the laptop mouse over the window and click as desired. In relative mode, the mouse doesn't do anything until you click once on the desktop. This captures the mouse and subsequent clicks and motion are sent to the controlled host. A dialog is shown to remind you how to get back to your laptop desktop.

To release the captured mouse, we offer two methods: make a circle gesture with mouse or press "Alt+Ctrl+Shift" at the same time. The circle gesture is disabled by default.

The gesture method is helpful for systems that may not have a keyboard. Simply move the mouse in circle (with no mouse buttons pressed). It can be clockwise or counter-clockwise. If it doesn't work at first, just keep circling.

One or both of these methods must be selected at all times.

MacOS X Scaling

This mode is enabled by default, and applies a special adaptive scaling factor to maintain perfect alignment when using the crash cart adapter with Mac OS X computers.

Motion reporting mode

The current mouse motion reporting mode is indicated on this submenu. You also have the option of forcing the system into relative mode.

We expect any BIOS system that uses the USB mouse will probably not support absolute mode. Similarly, programs that run in DOS with the BIOS converting USB events into legacy PS/2 mouse events will not be able to understand absolute mouse events.

The USB Laptop Console will drop down to relative mode when the host operating system indicates that it does not support absolute mode (there is a way to do this over USB protocol). But you may force relative mode as well. This causes a USB hotplug event and is remembered internal to the USB Laptop Console itself. This might be needed if the computer doesn't correctly implement the USB HID specification.

Relative vs. absolute motion

Conventional mice are very simple devices. When they are moved across a desk, they simply report to the computer how far they have been moved. If you move the mouse left an inch, a relative number (say $X=-400, Y=0$) is reported to the computer. The host O/S takes this number and applies some user preferences to it and moves the on-screen mouse pointer to the left. Of course if the mouse is already in the top left corner, then the on-screen mouse pointer doesn't move.

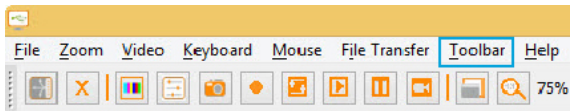
When emulating a mouse, it is best if the controlled computer acts like a window on your laptop screen. For that to happen, you want to direct the on-screen mouse pointer to a specific screen location so we want to send absolute screen coordinates, not relative motion events to the controlled host.

The USB H.I.D (Human Interface Devices) standard allows us to define a special USB mouse that operates somewhat like a touch screen and simply tells the host where it wants the mouse pointer to be. This works perfectly for modern Windows and Mac OS X systems.

But there are USB KVM systems, USB to PS/2 convertors, DOS programs, simpler operating systems and other situations where a simple USB relative mouse is needed. For this reason, we support operation in relative mode.

In Relative mode, this program will 'capture' your mouse into its control window. This must be done to convert your laptop mouse events back into relative events and send those to the controlled system. While the mouse is captured, you cannot do anything else with your system except control the attached computer.

Toolbar Menu



This menu provides a more direct way to control the toolbar. You can easily 'dock' or 'float' the toolbar, as well as hide or show it. The current status of the toolbar is shown as check marks beside these choices.

The state of the toolbar (floating, docked, vertical, horizontal, position, etc.) is remembered when the program is closed and then reopened. However, if you wish to return to the default layout, use the Restore default window layout option.

Troubleshooting

Symptom	Problem/Suggested Course of Action
No lights	Adapter has no power from either USB connection. Try other USB ports.
Black bar on left/top of image	Use the Picture Positioning arrows on the Video Settings dialog to shift the image leftwards / upwards until no black can be seen. Be sure to save your change.
User Console LED flashing or software says not connected	Verify the device drivers are correctly installed (Windows only): Unplug the adapter. Reboot. Plug in the adapter. No dialog from Windows about 'found new hardware' should be seen.
Red X over keyboard in toolbar	The emulated USB keyboard and/or mouse is not being handled by the attached computer. It might be disconnected, powered down, or the O/S may be halted. When in this state, the keyboard and mouse will not do anything. Try using the (Simulate Hotplug (reset) command in the Keyboard menu,
KVM switch doesn't work	When using a USB KVM switch, rather than a direct connection to a server, we recommend disabling the USB mouse emulation or forcing relative mouse motion mode. Disabling the USB mouse emulation simplifies the USB prole we present to the KVM switch, and even the most basic USB implementation should be able to understand and support our keyboard and mouse in relative mode.
Toolbar is gone / Always fullscreen / Window stuck too big or small	Use the menu item: Toolbar > Restore default window layout to restore window positions and toolbar state.

Specifications

PC Interface	USB
PC Video Type	VGA
Console Interface(s)	USB Mini-B (5 pin) Female
Host Connectors	1 - USB A (4 pin) Male 1 - VGA (15 pin; High Density D-Sub) Male
Maximum Analog Resolutions	1920x1200 @ 60Hz
Power Adapter	USB-Powered
Power Adapter	Plastic
Operating Temperature	0°C to 40°C (32°F to 104°F)
Storage Temperature	-40°C to 70°C (-40°F to 158°F)
Humidity	80% RH
Dimensions	73 x 135 x 15mm
Weight	170g
OS Compatibility	Windows® XP, Vista, 7, 8, 8.1, 10, 11 Windows Server® 2008 R2, 2012, 2012 R2, 2016, 2019, 2022 macOS 10.9 to 10.15, 11.0, 12.0, 13.0, 14.0, 15.0 Linux 2.6 and up - LTS Versions only

Technical Support

StarTech.com's lifetime technical support is an integral part of our commitment to provide industry-leading solutions. If you ever need help with your product, visit www.startech.com/support and access our comprehensive selection of online tools, documentation, and downloads.

For the latest drivers/software, please visit www.startech.com/downloads

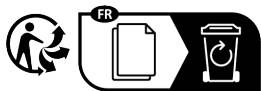
Warranty Information

This product is backed by a two year warranty.

In addition, StarTech.com warrants its products against defects in materials and workmanship for the periods noted, following the initial date of purchase. During this period, the products may be returned for repair, or replacement with equivalent products at our discretion. The warranty covers parts and labor costs only. StarTech.com does not warrant its products from defects or damages arising from misuse, abuse, alteration, or normal wear and tear.

Limitation of Liability

In no event shall the liability of StarTech.com Ltd. and StarTech.com USA LLP (or their officers, directors, employees or agents) for any damages (whether direct or indirect, special, punitive, incidental, consequential, or otherwise), loss of profits, loss of business, or any pecuniary loss, arising out of or related to the use of the product exceed the actual price paid for the product. Some states do not allow the exclusion or limitation of incidental or consequential damages. If such laws apply, the limitations or exclusions contained in this statement may not apply to you.



StarTech.com

Hard-to-find made easy®

Hard-to-find made easy. At StarTech.com, that isn't a slogan. It's a promise.

StarTech.com is your one-stop source for every connectivity part you need. From the latest technology to legacy products — and all the parts that bridge the old and new — we can help you find the parts that connect your solutions.

We make it easy to locate the parts, and we quickly deliver them wherever they need to go. Just talk to one of our tech advisors or visit our website. You'll be connected to the products you need in no time.

Visit www.startech.com for complete information on all StarTech.com products and to access exclusive resources and time-saving tools.

StarTech.com is an ISO 9001 Registered manufacturer of connectivity and technology parts. StarTech.com was founded in 1985 and has operations in the United States, Canada, the United Kingdom and Taiwan servicing a worldwide market.