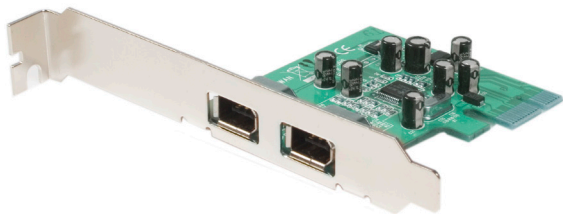


2 Port PCI Express 1394a FireWire Card with Video Editing Kit

PEX1394A2DV



*actual product may vary from photos

DE: Bedienungsanleitung - de.startech.com

FR: Guide de l'utilisateur - fr.startech.com

ES: Guía del usuario - es.startech.com

IT: Guida per l'uso - it.startech.com

NL: Gebruiksaanwijzing - nl.startech.com

PT: Guia do usuário - pt.startech.com

For the most up-to-date information, please visit: www.startech.com

FCC Compliance Statement

This equipment has been tested and found to comply with the limits for a Class B digital device, pursuant to part 15 of the FCC Rules. These limits are designed to provide reasonable protection against harmful interference in a residential installation. This equipment generates, uses and can radiate radio frequency energy and, if not installed and used in accordance with the instructions, may cause harmful interference to radio communications. However, there is no guarantee that interference will not occur in a particular installation. If this equipment does cause harmful interference to radio or television reception, which can be determined by turning the equipment off and on, the user is encouraged to try to correct the interference by one or more of the following measures:

Reorient or relocate the receiving antenna.

Increase the separation between the equipment and receiver.

Connect the equipment into an outlet on a circuit different from that to which the receiver is connected.

Consult the dealer or an experienced radio/TV technician for help.

Use of Trademarks, Registered Trademarks, and other Protected Names and Symbols

This manual may make reference to trademarks, registered trademarks, and other protected names and/or symbols of third-party companies not related in any way to StarTech.com. Where they occur these references are for illustrative purposes only and do not represent an endorsement of a product or service by StarTech.com, or an endorsement of the product(s) to which this manual applies by the third-party company in question. Regardless of any direct acknowledgement elsewhere in the body of this document, StarTech.com hereby acknowledges that all trademarks, registered trademarks, service marks, and other protected names and/or symbols contained in this manual and related documents are the property of their respective holders.

Table of Contents

Introduction	1
Features.....	1
Package Contents.....	1
Installation.....	2
Installing the PCI Express card	2
Installing the Drivers	2
Verifying Driver installation.....	3
Specifications.....	4
Technical Support.....	5
Warranty Information.....	5

Introduction

Thank you for purchasing a StarTech.com 2 Port PCI Express FireWire 400 Card with Digital Video Editing Kit. Supporting single lane PCI Express installation, this card provides FireWire data transfer rates of up to 400Mbps for high speed connections to a broad range of FireWire peripherals.

Plus, PEX1394A2DV includes ULEAD® Video Editing software, allowing for simple editing of video from connected devices including Digital Cameras, external hard drives, DV camcorders, webcams, personal multimedia players and more.

Features

- Includes everything needed to edit your own home movies, add scene transitions and other effects with the included ULEAD® VideoStudio® SE software
- Provides high speed data transfer rates of up to 400 Mbps
- Compliant with PCI Express Specification 1.0a
- Easy to Install and use

Package Contents

- 1 X 2 Port FireWire Card
- 1 X 5' Firewire 4-6 pin M/M Cable
- 1 x Low Profile Bracket
- 1 X ULEAD® Ver. 10.0 Video Editing Software CD
- 1 X Instruction Manual

Installation

Installing the PCI Express Card

WARNING! PCI Express cards, like all computer equipment, can be severely damaged by static electricity. Be sure that you are properly grounded before opening your computer case or touching your card.

1. Turn your computer off and any peripherals connected to the computer (i.e. Printers, external hard drives, etc.). Unplug the power cable from the rear of the power supply on the back of the computer and disconnect all peripheral devices.
2. Remove the cover from the computer case. See documentation for your computer system for details.
3. Locate an open PCI Express slot and remove the metal cover plate on the rear of the computer case (Refer to documentation for your computer system for details.). Note that this card will work in PCI Express slots of additional lanes (i.e. x4, x8 or x16 slots).
4. Gently insert the card into the open PCI Express slot and fasten the bracket to the rear of the case.

NOTE: If installing the card into a small form factor/low profile system, replacing the pre-installed full profile bracket with the included low profile installation bracket may be necessary.

5. Place the cover back onto the computer case.
6. Insert the power cable into the socket on the power supply and reconnect all other connectors removed in Step 1.

Installing the Drivers

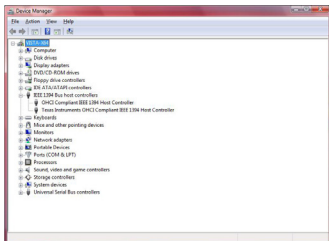
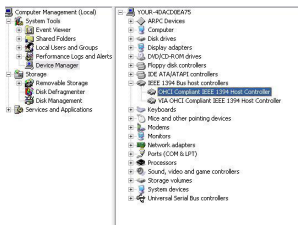
Once the PCI Express card has been installed, it is safe to power up the computer. The operating system will detect the presence of the card and automatically install the necessary drivers.

Verifying Driver installation

To verify that the drivers have successfully been installed on a computer running Windows 2000, XP, Vista™ or 7.

1. From the desktop, right-click on My Computer (Computer for Windows Vista™/7), and select Manage.
2. In the Computer Management window that appears, click on Device Manager in the left pane.

In the right pane, click on IEEE1394 Bus Host Controllers. If the card is installed correctly, you will see a listing for OHCI Compliant IEEE 1394 Host Controller:



Specifications

Regulatory Certifications	FCC, CE, ROHS
Bus Type	PCI Express Card
Connectors	2 x FireWire (6-pin) (female)
Maximum Data Transfer Rate	400Mbps
Chipset	JMicron JM381
OS Support	Windows 2000/ XP(32/64-bit)/ Server 2003(32/64-bit)/ Vista(32/64-bit)/ 7(32/64-bit)/ Server 2008 R2, and Linux

Technical Support

StarTech.com's lifetime technical support is an integral part of our commitment to provide industry-leading solutions. If you ever need help with your product, visit www.startech.com/ support and access our comprehensive selection of online tools, documentation, and downloads.

Warranty Information

This product is backed by a lifetime warranty.

In addition, StarTech.com warrants its products against defects in materials and workmanship for the periods noted, following the initial date of purchase. During this period, the products may be returned for repair, or replacement with equivalent products at our discretion. The warranty covers parts and labor costs only. StarTech.com does not warrant its products from defects or damages arising from misuse, abuse, alteration, or normal wear and tear.

Limitation of Liability

In no event shall the liability of StarTech.com Ltd. and StarTech.com USA LLP (or their officers, directors, employees or agents) for any damages (whether direct or indirect, special, punitive, incidental, consequential, or otherwise), loss of profits, loss of business, or any pecuniary loss, arising out of or related to the use of the product exceed the actual price paid for the product. Some states do not allow the exclusion or limitation of incidental or consequential damages. If such laws apply, the limitations or exclusions contained in this statement may not apply to you.

Hard-to-find made easy. At StarTech.com, that isn't a slogan. It's a promise.

StarTech.com is your one-stop source for every connectivity part you need. From the latest technology to legacy products — and all the parts that bridge the old and new — we can help you find the parts that connect your solutions.

We make it easy to locate the parts, and we quickly deliver them wherever they need to go. Just talk to one of our tech advisors or visit our website. You'll be connected to the products you need in no time.

Visit **www.startech.com** for complete information on all StarTech.com products and to access exclusive resources and time-saving tools.

StarTech.com is an ISO 9001 Registered manufacturer of connectivity and technology parts. StarTech.com was founded in 1985 and has operations in the United States, Canada, the United Kingdom and Taiwan servicing a worldwide market.