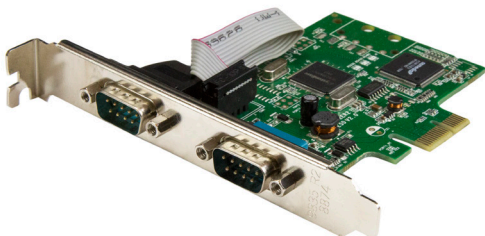


2-Port Serial Card with 16C1050 UART - RS232 – PCIe

PEX2S1050



*actual product may vary from photos

FR: Guide de l'utilisateur - fr.startech.com

DE: Bedienungsanleitung - de.startech.com

ES: Guía del usuario - es.startech.com

NL: Gebruiksaanwijzing - nl.startech.com

PT: Guia do usuário - pt.startech.com

IT: Guida per l'uso - it.startech.com

For the latest information, technical specifications, and support for this product, please visit www.startech.com/PEX2S1050

FCC Compliance Statement

This equipment has been tested and found to comply with the limits for a Class B digital device, pursuant to part 15 of the FCC Rules. These limits are designed to provide reasonable protection against harmful interference in a residential installation. This equipment generates, uses and can radiate radio frequency energy and, if not installed and used in accordance with the instructions, may cause harmful interference to radio communications. However, there is no guarantee that interference will not occur in a particular installation. If this equipment does cause harmful interference to radio or television reception, which can be determined by turning the equipment off and on, the user is encouraged to try to correct the interference by one or more of the following measures:

- Reorient or relocate the receiving antenna.
- Increase the separation between the equipment and receiver.
- Connect the equipment into an outlet on a circuit different from that to which the receiver is connected.
- Consult the dealer or an experienced radio/TV technician for help

This device complies with part 15 of the FCC Rules. Operation is subject to the following two conditions: (1) This device may not cause harmful interference, and (2) this device must accept any interference received, including interference that may cause undesired operation.

Changes or modifications not expressly approved by StarTech.com could void the user's authority to operate the equipment.

Industry Canada Statement

This Class B digital apparatus complies with Canadian ICES-003.

Cet appareil numérique de la classe [B] est conforme à la norme NMB-003 du Canada.

CAN ICES-3 (B)/NMB-3(B)

Use of Trademarks, Registered Trademarks, and other Protected Names and Symbols

This manual may make reference to trademarks, registered trademarks, and other protected names and/or symbols of third-party companies not related in any way to StarTech.com. Where they occur these references are for illustrative purposes only and do not represent an endorsement of a product or service by StarTech.com, or an endorsement of the product(s) to which this manual applies by the third-party company in question. Regardless of any direct acknowledgement elsewhere in the body of this document, StarTech.com hereby acknowledges that all trademarks, registered trademarks, service marks, and other protected names and/or symbols contained in this manual and related documents are the property of their respective holders.

Windows is a trademark of Microsoft Corporation.

Table of Contents

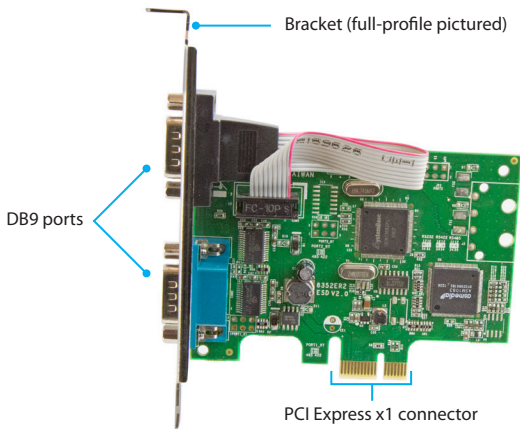
Introduction	1
Product diagram.....	1
Package contents	2
Requirements.....	2
Hardware installation	3
Install the low-profile brackets.....	3
Install the PCIe Card	3
Software installation	4
Install the driver - Windows.....	4
Technical support.....	5
Warranty information	5

Introduction

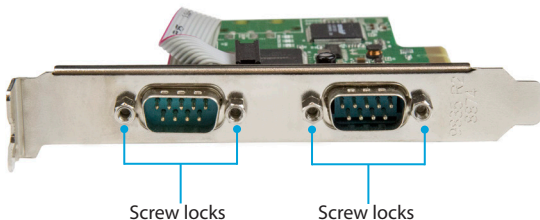
This serial card lets you add two RS232 serial ports to your full or small form-factor computer through a PCI Express expansion slot. It features a dual-channel 16C1050 UART for compatibility with 16C1050 serial devices. It's a convenient solution for connecting modern or legacy serial devices to your computer, with support for data transfer rates up to 460Kbps.

Product diagram

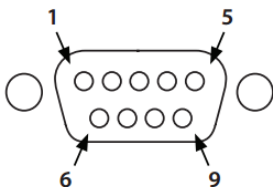
Top view



Front view



DB9 RS232 connector pinout - male



Pin 1	DCD
Pin 2	RXD
Pin 3	TXD
Pin 4	DTR
Pin 5	GND
Pin 6	DSR
Pin 7	RTS
Pin 8	CTS
Pin 9	RI

Package contents

- 1 x serial card
- 2 x low-profile brackets
- 1 x quick-start guide

Requirements

- A host computer with a PCI Express x1 slot (two expansion slots are required for installation into a low-profile computer)
- RS232 serial cables (DB9)
- Any of the following operating systems:
 - Windows® 95, 98SE, ME, XP, Vista, 7, 8, 8.1, 10, 11
 - Windows® Server 2008 R2, 2012, 2012 R2, 2016, 2019, 2022

Hardware installation

Install the low-profile brackets

The serial card can be installed in a low-profile (half-height) or a full-profile computer. The full-profile bracket comes preinstalled on the card, but if you have a small form-factor computer, you can install the two low-profile brackets instead.

1. Remove the four screw locks that are securing the DB9 serial ports to the full-profile bracket.
2. Remove the full-profile bracket from the card.
3. Align the low-profile bracket's DB9 port holes with the DB9 ports on the card.
4. Insert one DB9 serial port into the DB9 port hole on each of the two low-profile brackets using the screw locks from step 1.
5. Insert the two screw locks from step 1 and tighten them into place on each low-profile bracket.

Install the PCIe Card

Warning! PCIe cards can be severely damaged by static electricity. If an anti-static strap isn't available, discharge any built-up static electricity by touching a large grounded metal surface for several seconds.

1. Turn off your computer and any devices or peripherals that are connected to it, such as printers or external storage devices.
2. Unplug the power cable from the back of your computer.
3. Disconnect any peripheral devices that are connected to your computer.
4. Remove the cover from your computer case. Consult the documentation that came with your computer for details about how to do this safely.
5. Locate an open PCIe slot and remove the corresponding metal cover plate from the back of your computer case. Consult the documentation that came with your computer for details about how to do this safely. This card works in PCIe slots of x1, x4, x8, or x16 lanes.
6. Gently insert the card into the open PCIe slot and fasten the bracket to the back of the case. For low-profile installations, two open slots on your computer case are required, one for the PCIe card, and one additional open slot for the second low-profile bracket.

Note: If you install the card into a low-profile (small form-factor) desktop system, it might be necessary to replace the preinstalled full-profile bracket with the two included low-profile installation brackets. See "Install the low-profile brackets" for instructions on how to do this.

7. Place the cover back onto your computer case.
8. Reconnect the power cable to the back of your computer.
9. Reconnect all of the peripheral devices that you disconnected in step 3.
10. Turn on your computer.

Software installation

Install the driver - Windows

1. Using a web browser, navigate to www.startech.com/PEX2S1050.
2. On the Product page, click the Support tab located in the middle of the screen.
3. In the Drivers and Downloads section, click on the driver link:

"[systembase sb16c1052pci] windows serial card 16c1050 uart.zip".

Note: When you download files, Windows usually saves them in the Downloads folder which is located under your user name in the "users" folder on the drive where Windows is installed (for example C:\users\your name\downloads).

4. On the Downloads folder, right click the **[SystemBase SB16C1052PCI] Windows Serial Card 16C1050 UART.zip** file and select **Extract All**.
5. Take note of location that files will be extracted to, and select **Extract**.
6. When complete, extracted files will automatically open.
7. Locate the required **PCI_Setup.exe** file under the **[SystemBase SB16C1052PCI] Windows Serial Card 16C1050 UART (x32 or x64)** folder.
7. Follow the on-screen prompts to complete the installation.

Technical support

StarTech.com's lifetime technical support is an integral part of our commitment to provide industry-leading solutions. If you ever need help with your product, visit **www.startech.com/support** and access our comprehensive selection of online tools, documentation, and downloads.

For the latest drivers/software, please visit **www.startech.com/downloads**

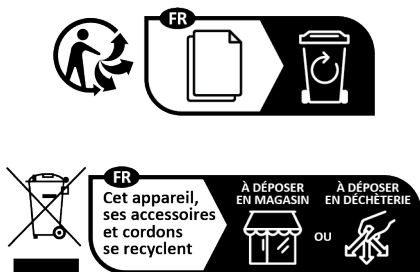
Warranty information

This product is backed by a two-year warranty.

StarTech.com warrants its products against defects in materials and workmanship for the periods noted, following the initial date of purchase. During this period, the products may be returned for repair, or replacement with equivalent products at our discretion. The warranty covers parts and labor costs only. StarTech.com does not warrant its products from defects or damages arising from misuse, abuse, alteration, or normal wear and tear.

Limitation of Liability

In no event shall the liability of StarTech.com Ltd. and StarTech.com USA LLP (or their officers, directors, employees or agents) for any damages (whether direct or indirect, special, punitive, incidental, consequential, or otherwise), loss of profits, loss of business, or any pecuniary loss, arising out of or related to the use of the product exceed the actual price paid for the product. Some states do not allow the exclusion or limitation of incidental or consequential damages. If such laws apply, the limitations or exclusions contained in this statement may not apply to you.



Points de collecte sur www.quefairedemesdechets.fr
Privilégiez la réparation ou le don de votre appareil !

Hard-to-find made easy. At StarTech.com, that isn't a slogan. It's a promise.

StarTech.com is your one-stop source for every connectivity part you need. From the latest technology to legacy products — and all the parts that bridge the old and new — we can help you find the parts that connect your solutions.

We make it easy to locate the parts, and we quickly deliver them wherever they need to go. Just talk to one of our tech advisors or visit our website. You'll be connected to the products you need in no time.

Visit www.startech.com for complete information on all StarTech.com products and to access exclusive resources and time-saving tools.

StarTech.com is an ISO 9001 Registered manufacturer of connectivity and technology parts. StarTech.com was founded in 1985 and has operations in the United States, Canada, the United Kingdom and Taiwan servicing a worldwide market.