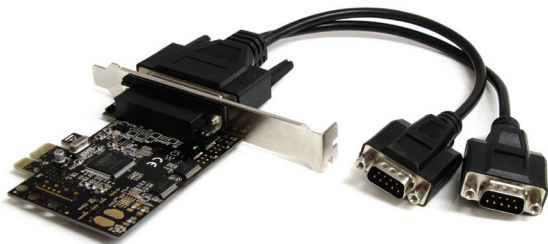


## 2 Port RS232 PCI Express Serial Card with Breakout Cable

PEX2S553B



\*actual product may vary from photos

DE: Bedienungsanleitung - [de.startech.com](http://de.startech.com)

FR: Guide de l'utilisateur - [fr.startech.com](http://fr.startech.com)

ES: Guía del usuario - [es.startech.com](http://es.startech.com)

IT: Guida per l'uso - [it.startech.com](http://it.startech.com)

NL: Gebruiksaanwijzing - [nl.startech.com](http://nl.startech.com)

PT: Guia do usuário - [pt.startech.com](http://pt.startech.com)

For the most up-to-date information, please visit: [www.startech.com](http://www.startech.com)

# Table of Contents

<b>Introduction</b> .....	<b>1</b>
Packaging Contents .....	1
System Requirements.....	1
<b>Installation</b> .....	<b>2</b>
Hardware Installation .....	2
Driver Installation.....	2
Verifying Installation .....	3
<b>Specifications</b> .....	<b>4</b>
<b>Technical Support</b> .....	<b>5</b>
<b>Warranty Information</b> .....	<b>5</b>

# Introduction

The PEX2S553B 2-Port PCI Express Serial Card w/ Breakout Cable lets you add two RS232 serial ports using a single PCIe expansion slot. With the included break-out cable, you can easily add two ports to a single low profile slot.

The PCIe serial card features a native single-chip design that provides optimum reliability and speed, reducing the CPU load by up to 48% over conventional bridge-chip serial cards - a cost-effective solution for connecting legacy serial devices to PCIe enabled computers.

The multiport PCIe Serial Adapter includes both full and low-profile/half-height brackets for compatibility with standard and small form factor computers, and is compatible with a broad range of operating systems, including Windows® 7/Server 2008 R2, 2003/Vista/XP (32 and 64 bit), Linux Kernel 2.6.11 and up, as well as MAC OS 10.5 and above.

This product is a replacement for our PEX2S552B card.

Backed by a StarTech.com lifetime warranty and free lifetime technical support.

## Packaging Contents

- 1x 2 Port PCI-Express RS-232 Serial Card
- 1x Breakout cable
- 1x Full profile bracket
- 1x Driver CD
- 1x Instruction Manual

## System Requirements

- PCI Express enabled computer system with available PCIe slot
- Microsoft® Windows® 98SE/2000/XP/Server 2003/Vista/Server 2008 R2/7 (32/64 bit), Windows XP Embedded/CE5.0/CE6.0, or Apple® Mac OS® 10.4/10.5, or Linux® kernel 2.6.11 and above

# Installation

**WARNING!** PCI Express cards, like all computer equipment, can be severely damaged by static electricity. Be sure that you are properly grounded before opening your computer case or touching your PCI Express card. StarTech.com recommends that you wear an anti-static strap when installing any computer component. If an anti-static strap is unavailable, discharge yourself of any static electricity build-up by touching a large grounded metal surface (such as the computer case) for several seconds. Also be careful to handle the PCI Express card by its edges and not the gold connector.

## Hardware Installation

1. Turn your computer off and any peripherals connected to the computer (i.e. Printers, external hard drives, etc.). Unplug the power cable from the rear of the power supply on the back of the computer and disconnect all peripheral devices.
2. Remove the cover from the computer case. See documentation for your computer system for details.
3. Locate an open PCI Express slot and remove the metal cover plate on the rear of the computer case (Refer to documentation for your computer system for details.). Note that this card will work in PCI Express slots of additional lanes (i.e. x4, x8 or x16 slots).
4. Insert the card into the open PCI Express slot and fasten the bracket to the rear of the case.
5. Place the cover back onto the computer case.
6. Insert the power cable into the socket on the power supply and reconnect all other connectors removed in Step 1.

## Driver Installation

### Windows 2000/XP/Server 2003

1. When the Found New Hardware wizard appears on the screen, insert the Driver CD into your CD/DVD drive. If you are prompted

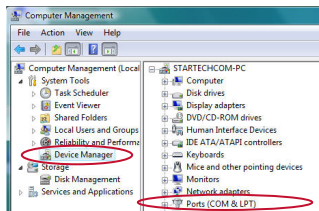
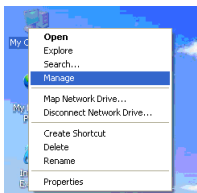
2. to connect to Windows Update, please select the “No, not this time” option and click Next.
3. Select the option “Install Drivers Automatically (Recommended)” and then click the Next button.
4. Windows should now start searching for the drivers. Once this has completed, click the Finish button.

## Windows Vista/7

1. When the Found New Hardware window appears on the screen, click on the “Locate and install drivers software (recommended)” option. If prompted to search online, select the “Don’t search online” option.
2. When prompted to insert the disc, insert the Driver CD that came with the card, into your CD/DVD drive and Windows will automatically proceed to search the CD.
3. If a Windows Security dialog window appears, click the “Install this driver software anyway” option to proceed.
4. Once the driver is installed, click the Close button.

## Verifying Installation

From the main desktop, right-click on “My Computer” (“Computer” in Vista/7), then select Manage. In the new Computer Management window, select Device Manager from the left window panel.



Double-click on the “Ports (COM & LPT)” option. The appropriate number of additional COM ports should be visible. The port(s) are ready to connect to new devices.

# Specifications

<b>Bus Interface</b>	PCI Express 1.0a (x1 slot connector)
<b>Form Factor</b>	Full/Low Profile
<b>Chipset ID</b>	Moschip MCS9922
<b>Connectors</b>	2 x DB9 male (via breakout cable)
<b>Supported Protocols</b>	RS232
<b>Buffer</b>	256-byte Tx/Rx FIFO (onchip)
<b>Maximum Data Transfer Rate</b>	250Kbps
<b>Operating Temperature</b>	0°C ~ 70°C (32°F ~ 158°F)
<b>Storage Temperature</b>	-40°C ~ 85°C (-40°F ~ 185°F)
<b>Humidity</b>	5% ~ 85% RH
<b>Dimensions (LxWxH)</b>	80.0mm x 80.0mm x 23.0mm
<b>Weight</b>	40g
<b>Compatible Operating Systems</b>	Windows 2000/XP/Server 2003/Vista/ Server 2008 R2/7 (32/64-bit), Windows XP Embedded/ POS Ready 2009/ Embedded Search 2009/ CE 5.0/CE 6.0 Mac OS 10.4/10.5, Linux Kernel 2.6.11 and above

# Technical Support

StarTech.com's lifetime technical support is an integral part of our commitment to provide industry-leading solutions. If you ever need help with your product, visit [www.startech.com/support](http://www.startech.com/support) and access our comprehensive selection of online tools, documentation, and downloads.

For the latest drivers/software, please visit [www.startech.com/downloads](http://www.startech.com/downloads)

## Warranty Information

This product is backed by a lifetime warranty.

In addition, StarTech.com warrants its products against defects in materials and workmanship for the periods noted, following the initial date of purchase. During this period, the products may be returned for repair, or replacement with equivalent products at our discretion. The warranty covers parts and labor costs only. StarTech.com does not warrant its products from defects or damages arising from misuse, abuse, alteration, or normal wear and tear.

### Limitation of Liability

In no event shall the liability of StarTech.com Ltd. and StarTech.com USA LLP (or their officers, directors, employees or agents) for any damages (whether direct or indirect, special, punitive, incidental, consequential, or otherwise), loss of profits, loss of business, or any pecuniary loss, arising out of or related to the use of the product exceed the actual price paid for the product. Some states do not allow the exclusion or limitation of incidental or consequential damages. If such laws apply, the limitations or exclusions contained in this statement may not apply to you.

Hard-to-find made easy. At StarTech.com, that isn't a slogan. It's a promise.

StarTech.com is your one-stop source for every connectivity part you need. From the latest technology to legacy products — and all the parts that bridge the old and new — we can help you find the parts that connect your solutions.

We make it easy to locate the parts, and we quickly deliver them wherever they need to go. Just talk to one of our tech advisors or visit our website. You'll be connected to the products you need in no time.

Visit [www.startech.com](http://www.startech.com) for complete information on all StarTech.com products and to access exclusive resources and time-saving tools.

*StarTech.com is an ISO 9001 Registered manufacturer of connectivity and technology parts. StarTech.com was founded in 1985 and has operations in the United States, Canada, the United Kingdom and Taiwan servicing a worldwide market.*