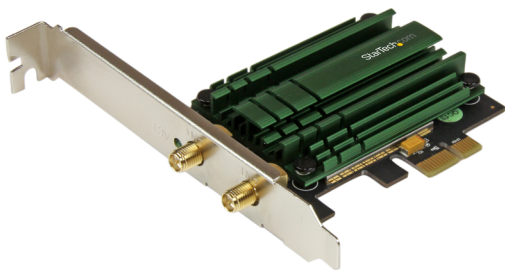


PCI Express to AC1200 Wireless-AC Network Card

PEX867WAC22



*actual product may vary from photos

DE: Bedienungsanleitung - de.startech.com

FR: Guide de l'utilisateur - fr.startech.com

ES: Guía del usuario - es.startech.com

IT: Guida per l'uso - it.startech.com

NL: Gebruiksaanwijzing - nl.startech.com

PT: Guia do usuário - pt.startech.com

For the most up-to-date information, please visit: www.startech.com

FCC Compliance Statement

This equipment has been tested and found to comply with the limits for a Class B digital device, pursuant to part 15 of the FCC Rules. These limits are designed to provide reasonable protection against harmful interference in a residential installation. This equipment generates, uses and can radiate radio frequency energy and, if not installed and used in accordance with the instructions, may cause harmful interference to radio communications. However, there is no guarantee that interference will not occur in a particular installation. If this equipment does cause harmful interference to radio or television reception, which can be determined by turning the equipment off and on, the user is encouraged to try to correct the interference by one or more of the following measures:

- Reorient or relocate the receiving antenna.
- Increase the separation between the equipment and receiver.
- Connect the equipment into an outlet on a circuit different from that to which the receiver is connected.
- Consult the dealer or an experienced radio/TV technician for help

This device complies with part 15 of the FCC Rules. Operation is subject to the following two conditions: (1) This device may not cause harmful interference, and (2) this device must accept any interference received, including interference that may cause undesired operation.

Changes or modifications not expressly approved by StarTech.com could void the user's authority to operate the equipment.

Industry Canada Statement

This Class B digital apparatus complies with Canadian ICES-003.

Cet appareil numérique de la classe [B] est conforme à la norme NMB-003 du Canada.

This device complies with Industry Canada licence-exempt RSS standard(s).

Operation is subject to the following two conditions:

(1) This device may not cause interference, and (2) This device must accept any interference, including interference that may cause undesired operation of the device.

Le présent appareil est conforme aux CNR d'Industrie Canada applicables aux appareils radio exempts de licence. L'exploitation est autorisée aux deux conditions suivantes:

(1) l'appareil ne doit pas produire de brouillage, et (2) l'utilisateur de l'appareil doit accepter tout brouillage radioélectrique subi, même si le brouillage est susceptible d'en compromettre le fonctionnement.

IC Radiation Exposure Statement:

This equipment complies with IC RSS-102 radiation exposure limit set forth for an uncontrolled environment. This equipment should be installed and operated with minimum distance 20cm between the radiator and your body.

Déclaration d'exposition à la radiation:

Cet équipement respecte les limites d'exposition aux rayonnements IC définies pour un environnement non contrôlé. Cet équipement doit être installé et mis en marche à une distance minimale de 20 cm qui sépare l'élément rayonnant de votre corps.

L'émetteur ne doit ni être utilisé avec une autre antenne ou un autre émetteur ni se trouver à leur proximité.

FCC ID:VYTLP-9094

IC:11232A-PEX867WAC22

Use of Trademarks, Registered Trademarks, and other Protected Names and Symbols

This manual may make reference to trademarks, registered trademarks, and other protected names and/or symbols of third-party companies not related in any way to StarTech.com. Where they occur these references are for illustrative purposes only and do not represent an endorsement of a product or service by StarTech.com, or an endorsement of the product(s) to which this manual applies by the third-party company in question. Regardless of any direct acknowledgement elsewhere in the body of this document, StarTech.com hereby acknowledges that all trademarks, registered trademarks, service marks, and other protected names and/or symbols contained in this manual and related documents are the property of their respective holders.

Table of Contents

Introduction	1
Packaging Contents	1
System Requirements.....	1
Product Overview	1
LED Indicator	1
Installation	2
Hardware Installation	2
Software Installation.....	3
Verifying Installation.....	3
Operation	4
Specifications	5
Technical Support	6
Warranty Information	6

Introduction

Packaging Contents

- 1 x PCI Express Wireless-AC Card
- 2 x 5 dBi Dual Band Antennas
- 1 x Antenna Stand
- 1 x Low Profile Bracket
- 1 x Driver CD
- 1 x Instruction Manual

System Requirements

- Available PCI Express slot
- Windows® 8 / 8.1 (32/64bit), 7 (32/64), Vista(32/64), XP(32/64), Windows Server® 2012, 2008 R2, 2003(32/64)

Product Overview



LED Indicator

Blinking – Activity on 2.4 or 5GHz connection

Installation

Hardware Installation

WARNING! PCI Express cards, like all computer equipment, can be severely damaged by static electricity. Be sure that you are properly grounded before opening your computer case or touching your card. StarTech.com recommends that you wear an anti-static strap when installing any computer component. If an anti-static strap is unavailable, discharge yourself of any static electricity build-up by touching a large grounded metal surface (such as the computer case) for several seconds. Also be careful to handle the card by its edges and not the gold connectors.

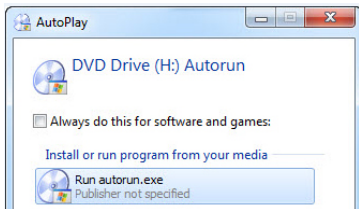
1. Turn your computer off and any peripherals connected to the computer (i.e. Printers, external hard drives, etc.). Unplug the power cable from the rear of the power supply on the back of the computer and disconnect all peripheral devices.
2. Remove the cover from the computer case. See documentation for your computer system for details.
3. Locate an open PCI Express slot and remove the metal cover plate on the rear of the computer case (Refer to documentation for your computer system for details.). Note that this card will work in PCI Express slots of additional lanes (i.e. x4, x8 or x16 slots).
4. Insert the card into the open PCI Express slot and fasten the bracket to the rear of the case.

NOTE: If installing the card into a low profile desktop system, replacing the preinstalled standard profile bracket with the included low profile (half height) installation bracket may be necessary.

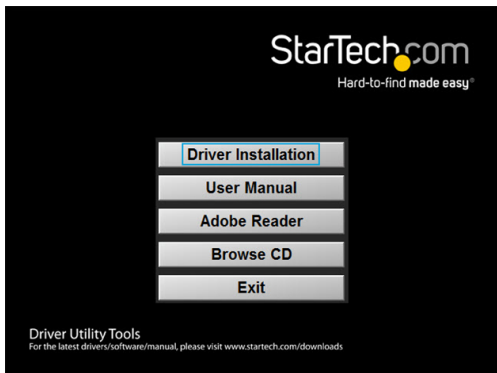
5. Place the cover back onto the computer case.
 6. Attach the included antennas:
 - a. Attach the antennas to the included antenna stand, then attach the antenna cable to the connectors on the card.
- OR
- b. Attach the antennas directly to the connectors on the card.
7. Insert the power cable into the socket on the power supply and reconnect all other connectors removed in Step 1.

Software Installation

1. Insert the provided CD into your DVD/CD-ROM drive.
2. Select **Autorun.exe** from the Autoplay menu. If Autoplay is disabled on your system, browse to your CD/DVD drive and run the application.



3. Select the **Driver Installation** option.

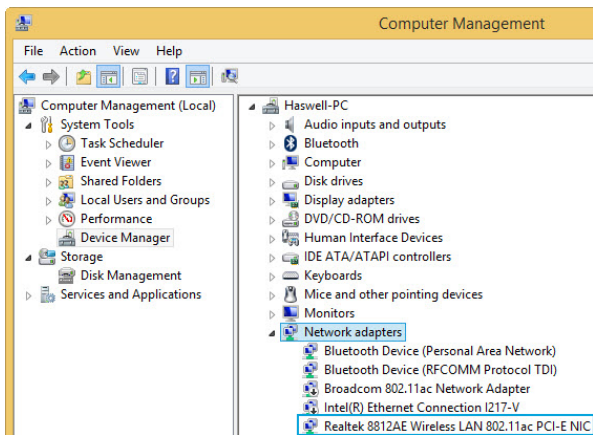


4. Follow the on-screen instructions to complete the installation.
NOTE: You may be prompted to restart once the install completes.

Verifying Installation

1. Open the *Device Manager* by right-clicking on **Computer**, and then select **Manage**. In the new *Computer Management* window, select **Device Manager** from the left window panel (For Windows 8, open the **Control Panel** and select **Device Manager**).

2. Expand the “Network adapters” section. On a successful install, you should see the following device in the list with no exclamation points or question marks.



Operation

Connecting to a wireless network is done through either the Windows wireless configuration utilities, or through the Realtek utility. You must know the name of the wireless network (SSID), the type of security it is using (if any) and its associated password to connect to a wireless network. Consult the documentation for your wireless access point (AP) or contact your network administrator for details.

Depending on your version of Windows, you can display the list of available networks using one of the following methods:

Windows 8	Move the cursor to the upper right corner to open the Charms Bar , select Settings and then select Wifi
Windows 7	Click the network adapter tray icon
Windows Vista	Click Start , then Connect To
Windows XP	Right-click the wireless adapter tray icon and select View Available Wireless Networks

For full operating instructions, please visit www.startech.com/PEX867WAC22

Specifications

Host Interface	PCI Express
Chipset	Realtek - RTL8812AE
External Connectors	2 x RP-SMA (Coax; Reverse Polarity SubMiniature A) Female
Supported Standards	IEEE 802.11a, IEEE 802.11b, IEEE 802.11g, IEEE 802.11n, IEEE 802.11ac
Antenna Configuration	2x2:2 (TxR:S)
Wireless Frequencies	2.400GHz ~ 2.484GHz 5.180GHz ~ 5.850GHz
Supported Security Schemes	64/128 bit WEP, WPA, WPA2 (TKIP/AES)
Operating Temperature	0°C ~ 60°C (32°F ~ 140°F)
Storage Temperature	0°C ~ 70°C (32°F ~ 158°F)
Humidity	10% ~ 90% RH
Dimensions	83 x 18 x 120mm
Weight	70g
Compatible Operating Systems	Windows® 8 / 8.1 (32/64bit), 7 (32/64), Vista(32/64), XP(32/64) Windows Server® 2012, 2008 R2, 2003(32/64)

Technical Support

StarTech.com's lifetime technical support is an integral part of our commitment to provide industry-leading solutions. If you ever need help with your product, visit www.startech.com/support and access our comprehensive selection of online tools, documentation, and downloads.

For the latest drivers/software, please visit www.startech.com/downloads

Warranty Information

This product is backed by a two year warranty.

In addition, StarTech.com warrants its products against defects in materials and workmanship for the periods noted, following the initial date of purchase. During this period, the products may be returned for repair, or replacement with equivalent products at our discretion. The warranty covers parts and labor costs only. StarTech.com does not warrant its products from defects or damages arising from misuse, abuse, alteration, or normal wear and tear.

Limitation of Liability

In no event shall the liability of StarTech.com Ltd. and StarTech.com USA LLP (or their officers, directors, employees or agents) for any damages (whether direct or indirect, special, punitive, incidental, consequential, or otherwise), loss of profits, loss of business, or any pecuniary loss, arising out of or related to the use of the product exceed the actual price paid for the product. Some states do not allow the exclusion or limitation of incidental or consequential damages. If such laws apply, the limitations or exclusions contained in this statement may not apply to you.

Hard-to-find made easy. At StarTech.com, that isn't a slogan. It's a promise.

StarTech.com is your one-stop source for every connectivity part you need. From the latest technology to legacy products — and all the parts that bridge the old and new — we can help you find the parts that connect your solutions.

We make it easy to locate the parts, and we quickly deliver them wherever they need to go. Just talk to one of our tech advisors or visit our website. You'll be connected to the products you need in no time.

Visit www.startech.com for complete information on all StarTech.com products and to access exclusive resources and time-saving tools.

StarTech.com is an ISO 9001 Registered manufacturer of connectivity and technology parts. StarTech.com was founded in 1985 and has operations in the United States, Canada, the United Kingdom and Taiwan servicing a worldwide market.