

PEXUSB4DP

Instruction Manual

PCI Express USB Card

4 Port PCI Express Low Profile
High Speed USB 2.0
Adapter Card

StarTech.com 
Making hard-to-find easy!®

FCC Compliance Statement

This equipment has been tested and found to comply with the limits for a Class B digital device, pursuant to part 15 of the FCC Rules. These limits are designed to provide reasonable protection against harmful interference in a residential installation. This equipment generates, uses and can radiate radio frequency energy and, if not installed and used in accordance with the instructions, may cause harmful interference to radio communications. However, there is no guarantee that interference will not occur in a particular installation. If this equipment does cause harmful interference to radio or television reception, which can be determined by turning the equipment off and on, the user is encouraged to try to correct the interference by one or more of the following measures:

- Reorient or relocate the receiving antenna.
- Increase the separation between the equipment and receiver.
- Connect the equipment into an outlet on a circuit different from that to which the receiver is connected.
- Consult the dealer or an experienced radio/TV technician for help.

Use of Trademarks, Registered Trademarks, and other Protected Names and Symbols

This manual may make reference to trademarks, registered trademarks, and other protected names and/or symbols of third-party companies not related in any way to StarTech.com. Where they occur these references are for illustrative purposes only and do not represent an endorsement of a product or service by StarTech.com, or an endorsement of the product(s) to which this manual applies by the third-party company in question. Regardless of any direct acknowledgement elsewhere in the body of this document, StarTech.com hereby acknowledges that all trademarks, registered trademarks, service marks, and other protected names and/or symbols contained in this manual and related documents are the property of their respective holders.

Table of Contents

Introduction.....	1
Packaging Contents.....	1
System Requirements	1
Installation.....	2
Hardware Installation	2
Driver Installation.....	3
Verifying Installation.....	3
Specifications	4
Technical Support	5
Warranty Information	5

Introduction

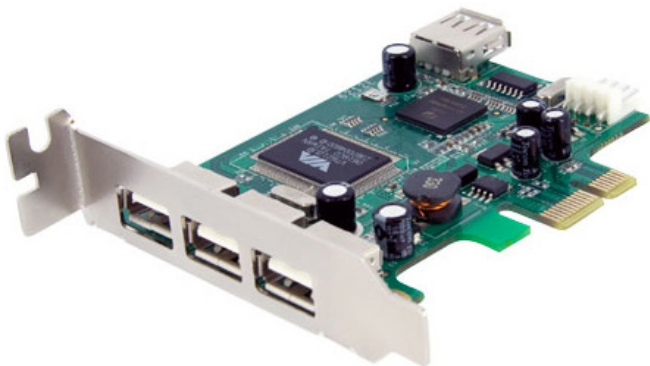
This 4 Port Low Profile PCI Express USB 2.0 Adapter Card lets you connect up to four USB 2.0 peripherals (3 external and 1 internal) to your computer at data transfer rates of up to 480 Mbps. Configured with a low profile bracket, it also includes a full standard bracket.

Packaging Contents

- 1 x PEXUSB4DP adapter card
- 1 x Full Profile Bracket
- 1 x Driver CD
- 1 x Installation Manual

System Requirements

- PCI Express (PCIe) enabled computer system



Installation

WARNING! PCI Express cards, like all computer equipment, can be severely damaged by static electricity. Be sure that you are properly grounded before opening your computer case or touching card. StarTech.com recommends that you wear an anti-static strap when installing any computer component. If an anti-static strap is unavailable, discharge yourself of any static electricity build-up by touching a large grounded metal surface (such as the computer case) for several seconds. Also be careful to handle the card by its edges and not the gold connectors.

Hardware Installation

1. Turn your computer off and any peripherals connected to the computer (ie. Printers, external hard drives, etc.). Unplug the power cable from the rear of the power supply on the back of the computer.
2. Remove the cover from the computer case.
3. Locate an open PCI Express slot and remove the metal cover plate on the rear of the computer case. Note that this card will work in PCI Express slots of additional lanes (ie. x4, x8 or x16 slots)
4. Insert the card into the open PCI Express slot and screw the bracket to the rear of the case.
NOTE: If the computer case only accepts full profile cards, then remove the low profile bracket on the card, by removing the screws holding it to the card and replace with the supplied full sized bracket.
5. **OPTIONAL:** Plug in the SP4 floppy power connector from the computer power supply to the card.
6. Place the cover back onto the computer.
7. Insert the power cable into the socket on the power supply.

Driver Installation

- Windows, Mac OS X, and Linux.

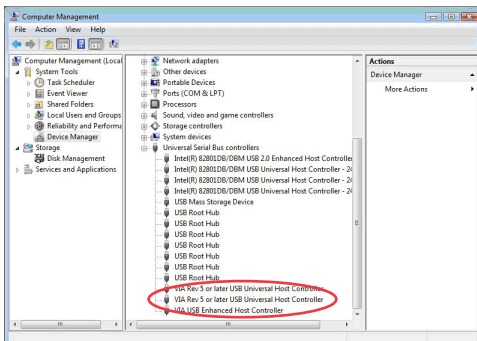
No driver installation is required for these operating systems, as this adapter card is natively supported, so the drivers are already installed.

Verifying Installation

Windows

From the main desktop, right-click on "My Computer" ("Computer" in Vista/7), then select Manage. In the new Computer Management window, select Device Manager from the left window panel.

There should be new "VIA" devices listed under the "Universal Serial Bus Controllers" category.



Specifications

Bus Interface	PCI Express x1
USB Specification	USB 2.0
Connectors	3 x USB type A (external) 1 x USB type A (internal) 1 x SP4 power (internal)
Maximum Data Transfer Rate	480 Mbps

Technical Support

StarTech.com's lifetime technical support is an integral part of our commitment to provide industry-leading solutions. If you ever need help with your product, visit www.startech.com/support and access our comprehensive selection of online tools, documentation, and downloads.

Warranty Information

This product is backed by a one year warranty.

In addition, StarTech.com warrants its products against defects in materials and workmanship for the periods noted, following the initial date of purchase. During this period, the products may be returned for repair, or replacement with equivalent products at our discretion. The warranty covers parts and labor costs only. StarTech.com does not warrant its products from defects or damages arising from misuse, abuse, alteration, or normal wear and tear.

Limitation of Liability

In no event shall the liability of StarTech.com Ltd. and StarTech.com USA LLP (or their officers, directors, employees or agents) for any damages (whether direct or indirect, special, punitive, incidental, consequential, or otherwise), loss of profits, loss of business, or any pecuniary loss, arising out of or related to the use of the product exceed the actual price paid for the product. Some states do not allow the exclusion or limitation of incidental or consequential damages. If such laws apply, the limitations or exclusions contained in this statement may not apply to you.



StarTech.com has been making "hard-to-find easy" since 1985, providing high quality solutions to a diverse IT and A/V customer base that spans many channels, including government, education and industrial facilities to name just a few. We offer an unmatched selection of computer parts, cables, A/V products, KVM and Server Management solutions, serving a worldwide market through our locations in the United States, Canada, the United Kingdom and Taiwan.

Visit www.startech.com today for complete information about all our products and to access exclusive interactive tools such as the Cable Finder, Parts Finder and the KVM Reference Guide.