

USB 3.0 Dual 3.5" SATA HDD RAID Enclosure w/ UASP & Fast Charge USB Hub

S352BU33HR



*actual product may vary from photos

DE: Bedienungsanleitung - de.startech.com

FR: Guide de l'utilisateur - fr.startech.com

ES: Guía del usuario - es.startech.com

IT: Guida per l'uso - it.startech.com

NL: Gebruiksaanwijzing - nl.startech.com

PT: Guia do usuário - pt.startech.com

For the most up-to-date information, please visit: www.startech.com

FCC Compliance Statement

This equipment has been tested and found to comply with the limits for a Class B digital device, pursuant to part 15 of the FCC Rules. These limits are designed to provide reasonable protection against harmful interference in a residential installation. This equipment generates, uses and can radiate radio frequency energy and, if not installed and used in accordance with the instructions, may cause harmful interference to radio communications. However, there is no guarantee that interference will not occur in a particular installation. If this equipment does cause harmful interference to radio or television reception, which can be determined by turning the equipment off and on, the user is encouraged to try to correct the interference by one or more of the following measures:

- Reorient or relocate the receiving antenna.
- Increase the separation between the equipment and receiver.
- Connect the equipment into an outlet on a circuit different from that to which the receiver is connected.
- Consult the dealer or an experienced radio/TV technician for help.

Use of Trademarks, Registered Trademarks, and other Protected Names and Symbols

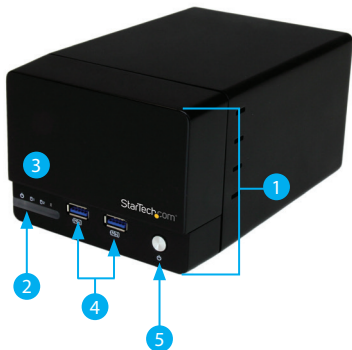
This manual may make reference to trademarks, registered trademarks, and other protected names and/or symbols of third-party companies not related in any way to StarTech.com. Where they occur these references are for illustrative purposes only and do not represent an endorsement of a product or service by StarTech.com, or an endorsement of the product(s) to which this manual applies by the third-party company in question. Regardless of any direct acknowledgement elsewhere in the body of this document, StarTech.com hereby acknowledges that all trademarks, registered trademarks, service marks, and other protected names and/or symbols contained in this manual and related documents are the property of their respective holders.

Table of Contents

Product Diagram	1
Front View	1
Rear View	1
Introduction	2
Packaging Contents	2
System Requirements.....	2
Hardware Installation	3
Technical Support	12
Warranty Information.....	12

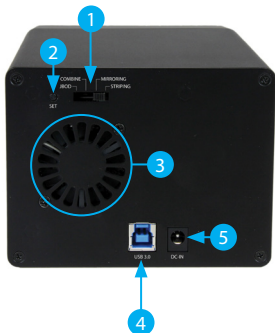
Product Diagram

Front View



- 1 Front Bay
- 2 Power LED
- 3 Drive Activity LEDs
- 4 USB 3.0 Hub + Charging Ports
- 5 Power Button

Rear View



- 1 RAID Mode Switch
- 2 Set RAID button
- 3 Drive Fan
- 4 USB 3.0 port
- 5 Power adapter port

Introduction

Packaging Contents

- USB 3.0 Hard Drive Enclosure (S352BU33HR)
- USB 3.0 Cable
- Universal Power Adapter (NA/UK/EU)
- Instruction Manual

System Requirements

- 1x Computer system with available USB 3.0 (5 Gbit/s) port/USB 2.0 port (480Mbps)
 - Microsoft® Windows® 2000/XP/Server 2003/Vista/Server 2008 R2/7/8 (32/64-bit), Apple® Mac® OS 9.x/10
 - Linux®
 - Google Chrome OS™
- 2x 3.5" SATA Hard Drives

Hardware Installation

WARNING! Hard drives and storage enclosures require careful handling, especially when being transported. If you are not careful with your hard disk, lost data may result. Always handle your hard drive and storage device with caution. Be sure that you are properly grounded by wearing an anti-static strap when handling computer components or discharge yourself of any static electricity build-up by touching a large grounded metal surface (such as the computer case) for several seconds.

1. Using a Philips head screw driver (not included), remove the side mounted screw on the left front facing side of the enclosure.



2. To reveal the drive bay, grasp the front panel and slide it upward.



3. With the hard drive label facing upward, gently slide each of your 3.5" hard drives into the drive bays until you feel resistance.

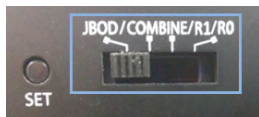


4. Slide the front panel back onto the S32BU33HR the same way it was removed.
5. Using a Philips head screw driver (not included), replace the side mounted screw on the left front facing side of the enclosure.

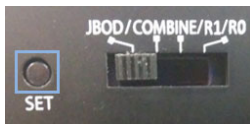
6. Using the included power adapter, connect the Power Adapter Port on the S352BU33HR to an available power outlet.
7. Connect the S352BU33HR to your computer system using the included USB 3.0 cable.
8. Set your desired RAID configuration and power on the device.

WARNING! In order to prepare your drives for RAID operation, this enclosure will configure newly installed drives into your desired RAID configuration. Please be aware that any data currently on the drives may be lost during this process. It is recommended that you back up all data prior to setting your RAID configuration.

- a) Ensure the S352BU33HR is powered off.
- b) Adjust the RAID Control Switch to your desired RAID configuration (See Available RAID Configurations).



- c) Press and hold the set RAID button while turning on the S352BU33HR on by pressing the Power Button.



Note: RAID configuration is only required for initial configuration or if you would like to change your RAID configuration.

Available RAID Configurations

The S352BU33RER enclosure supports 4 different RAID configurations. RAID is a storage technology that combines multiple hard drives into a single unit for secure data redundancy, increased volume size and/or improved performance.

Descriptions and benefits for each available RAID configuration are listed below:

JBOD - Normal

In JBOD, no RAID configuration is set and both drives appear as individual disks.

Note: For both drives to be detected while connected via eSATA the host controller must support SATA Port Multiplier.

Combine - BIG

In BIG, both drives appear together as a single large disk the size of both drives combined. This configuration enables you to create a larger volume than would be available using a single drive without the performance increase offered with RAID 0.

R1 (RAID1) – Mirroring

In RAID1 both drives appear as a single disk and data is written identically to both. This level protects your data from individual drive failure as a backup of all data is written instantly.

R0 (RAID0) – Spanning

In RAID0 both drives appear together as a larger single disk the size of both drives combined. This level can improve your performance as read and write operations are performed in parallel on separate disks.

How to Use

Accessing your Array

Once the enclosure has been attached to a computer, and powered on, your computer system will automatically recognize the drive(s) and it will be accessible as though it were installed in the system internally.

Note: If your computer fails to automatically recognize your drive it is likely your drive has not been initialized or formatted correctly. (See Drive Initialization below for further instructions.)

LED Indicators

The hard drive enclosure offers LED indicators so you can monitor drive and RAID array activity. Do not remove the enclosure from the host computer while the LEDs are flashing, as it could damage the drive or the enclosure, resulting in data loss. Please see the table below for detailed LED indication.

JBOD - Normal

	Enclosure Powered On			Drives being accessed	Drive 2 disconnected or dropped	Drive 2 reconnected	New drive connected	S
	Both Drives Installed and detected							
	Blue LED	Red LED	RAID LED					
HDD 1	On	Off						
HDD 2	On	Off	Off					
Note:		N/A		N/A		N/A		

R1 (RAID1) – Mirroring

		Enclosure Powered On			Drives being Accessed			Drive 2 Disconnected or Dropped			Drive 2 Reconnected			New Drive Connected			Sleep		
		Both Drives Installed and Detected																	
Blue LED	Red LED	RAID LED	Blue LED	Red LED	RAID LED	Blue LED	Red LED	RAID LED	Blue LED	Red LED	RAID LED	Blue LED	Red LED	RAID LED	Blue LED	Red LED	RAID LED		
HDD 1	ON	OFF	OFF	ON	BLINK	OFF	ON	OFF	SOLID	ON	BLINK	BLINK	ON	BLINK	BLINK	OFF	OFF	OFF	
HDD 2	ON	OFF		ON	BLINK		OFF	OFF		SOLID	ON		BLINK	ON		BLINK	ON		BLINK
NOTE:	N/A			* The LEDs appear purple because of the close proximity of the Blue and Red LEDs			* The DATA is still accessible and can be updated/modified even though one of the drives are disconnected.			* No power cycle is required but recommended. * Data remains accessible but no clear indication as to if the RAID has been fully repaired. * Again LEDs look purple. * RAID LED will turn off after rebuild is complete.			* No power cycle is required but recommended. * Data remains accessible but no clear indication as to if the RAID has been fully repaired. * Again LEDs look purple. * RAID LED will turn off after rebuild is complete.			*Support HDD spin-down and LED off when suspend/US command *Support HDD spin-down and LED off when VBUS is gone			

R0 (RAID0) – Spanning

		Enclosure Powered On			Drives being Accessed			Drive 2 Disconnected or Dropped			Drive 2 Reconnected			New Drive Connected			Sleep		
		Both Drives Installed and Detected																	
Blue LED	Red LED	RAID LED	Blue LED	Red LED	RAID LED	Blue LED	Red LED	RAID LED	Blue LED	Red LED	RAID LED	Blue LED	Red LED	RAID LED	Blue LED	Red LED	RAID LED		
HDD 1	ON	OFF	OFF	ON	BLINK	OFF	ON	OFF	SOLID	ON	BLINK	SOLID	ON	BLINK	SOLID	OFF	OFF	OFF	
HDD 2	ON	OFF		ON	BLINK		OFF	OFF		SOLID	ON		BLINK	ON		BLINK	ON		BLINK
NOTE:	N/A			* The LEDs appear purple because of the close proximity of the Blue and Red LEDs			* The drive will drop from the system.			* The unit needs to be power cycled before it will pair up with the drive again. * Again LEDs look purple. * RAID LED will turn off after rebuild is complete.			N/A			*Support HDD spin-down and LED off when suspend/US command *Support HDD spin-down and LED off when VBUS is gone			

Disconnecting the Hard Drive

Windows

1. Select the "Safely remove Hardware and Eject Media" icon, located in the task bar.
2. Select the Mass Storage Device from the list that appears.
3. Wait for the message indicating that it is now safe to remove the device.

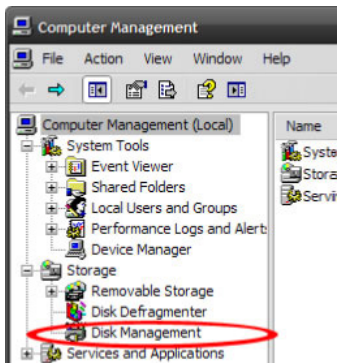
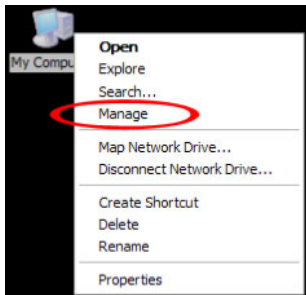
Note: Removing the connected drive prior to receiving notification that it is safe to do so, could result in losing or corrupting data stored on the drive. Once the Safe to Remove Hardware message appears, please disconnect the enclosure from the computer by removing the USB connection.

Mac OS X

To safely disconnect the attached drive from the host computer, close any windows listing the contents of the removable drive. Once all windows are closed, click on the USB storage icon on the desktop, and drag it to the Trash Can icon on the desktop. Allow 5 seconds before physically removing the enclosure/drive from the computer.

Initializing the Hard Drive

1. If the drive array is new it may need to be initialized and formatted before use. From the main Windows desktop, right-click on "My Computer" ("Computer" in Vista/ 7 / 8), then select Manage. In the new Computer Management window, select Disk Management from the left window panel.



2. A dialog window should automatically appear, asking you to initialize the drive. Depending on the version of Windows, it will give you the option of either creating an "MBR" or "GPT" disk. GPT (GUID partition) is required for drives larger than 2TB but is not compatible with some older operating systems, while MBR is supported by newer and older operating systems.

- Once initialized, locate the Disk that says it is "Unallocated" (check the listed hard drive capacity to confirm it's the correct hard drive) and then right-click in the section that says "Unallocated" and select "New Partition".



- Several on screen prompts will follow walking you through the steps to create the partition. Follow these prompts to complete partition creation.

Technical Support

StarTech.com's lifetime technical support is an integral part of our commitment to provide industry-leading solutions. If you ever need help with your product, visit www.startech.com/support and access our comprehensive selection of online tools, documentation, and downloads.

For the latest drivers/software, please visit www.startech.com/downloads

Warranty Information

This product is backed by a two year warranty.

In addition, StarTech.com warrants its products against defects in materials and workmanship for the periods noted, following the initial date of purchase. During this period, the products may be returned for repair, or replacement with equivalent products at our discretion. The warranty covers parts and labor costs only. StarTech.com does not warrant its products from defects or damages arising from misuse, abuse, alteration, or normal wear and tear.

Limitation of Liability

In no event shall the liability of StarTech.com Ltd. and StarTech.com USA LLP (or their officers, directors, employees or agents) for any damages (whether direct or indirect, special, punitive, incidental, consequential, or otherwise), loss of profits, loss of business, or any pecuniary loss, arising out of or related to the use of the product exceed the actual price paid for the product. Some states do not allow the exclusion or limitation of incidental or consequential damages. If such laws apply, the limitations or exclusions contained in this statement may not apply to you.

Hard-to-find made easy. At StarTech.com, that isn't a slogan. It's a promise.

StarTech.com is your one-stop source for every connectivity part you need. From the latest technology to legacy products — and all the parts that bridge the old and new — we can help you find the parts that connect your solutions.

We make it easy to locate the parts, and we quickly deliver them wherever they need to go. Just talk to one of our tech advisors or visit our website. You'll be connected to the products you need in no time.

Visit www.startech.com for complete information on all StarTech.com products and to access exclusive resources and time-saving tools.

StarTech.com is an ISO 9001 Registered manufacturer of connectivity and technology parts. StarTech.com was founded in 1985 and has operations in the United States, Canada, the United Kingdom and Taiwan servicing a worldwide market.