

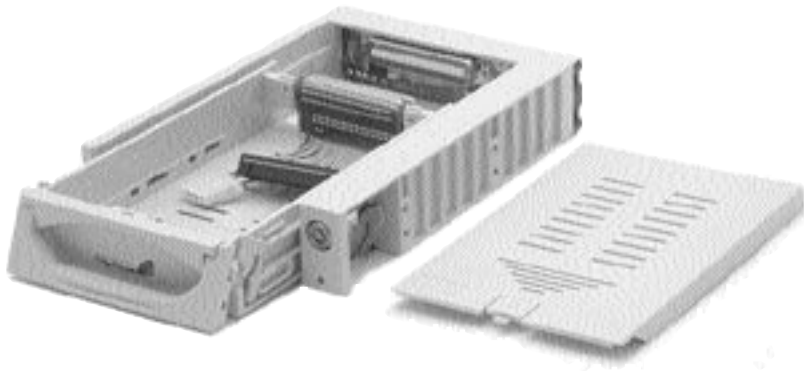
REMOVABLE HARD DISK DRAWER



Removable Drive Drawer for
3.5" IDE Hard Drive

SNT127A, SNT127ABK
IDE66BASIC, IDE66BASICBK
IDE66PRODRWR,
IDEPRODRWRBK

Instruction Guide



StarTech.com



The Professionals' Source For Hard-to-Find Computer Parts

Table of Contents

Introduction	2
Installation	3
Monitoring Your Hard Disk Drive and Drawer	5
Related Products	6
Technical Support	7
Warranty Information	7

Introduction

Thank you for purchasing a StarTech.com removable hard disk drawer. Now you can quickly add and remove IDE hard drives from your PC without having to open your computer. Each unit consists of an outer caddy that fits into any 5.25 inch drive bay and a removable drawer that holds your hard disk. Whether for multiple operating systems, making high speed, high capacity backups, or minimizing downtime on mission-critical PCs, StarTech.com's removable drive drawers provide the ultimate in reliability and convenience.

The SNT127A/SNT127BK and IDE66BASIC/IDE66BASICBK drive drawers each come with a rear ball-bearing fan to provide cooling air-flow over your hard disks. The heavy duty IDE66PRODRWR/IDEPRODRWRBK gives you the benefit of two front ball-bearing fans as well as rugged aluminum construction that can keep even the hottest 10,000 RPM drives cool.

Features

- Fits into any 5.25" drive bay
- Locking mechanism controls power to drive so that disk cannot be accidentally removed while operating
- LEDs keep you informed of drive power and activity status
- Ball bearing fan(s) keep devices running cool
- Supports Ultra ATA/66, ATA/100 and ATA/133 hard drives
- Backed by StarTech.com's one-year warranty

Before You Begin

To ensure a quick and easy drawer installation, please read through this section carefully before attempting to install the drawer.

WARNING! Hard drives, like all computer equipment, can be severely damaged by static electricity. Be sure that you are properly grounded before opening your computer case or touching your hard drive. StarTech.com recommends that you wear an anti-static strap when installing any computer component. If an anti-static strap is unavailable, discharge yourself of any static electricity build-up by touching a large grounded metal surface (such as the computer case) for several seconds.

System Requirements

- An IBM-PC or compatible computer
- One available 5.25" drive bay
- One driver connection cable
- One internal power cable

Contents

This package should contain:

- 1 x drive caddy
- 1 x drive bay
- 2 x keys to lock/unlock the drive
- 4 x M3 x 1/4" long (fine thread) screws
- 8 x 6-32 x 1/4" long (coarse thread) screws

Installation

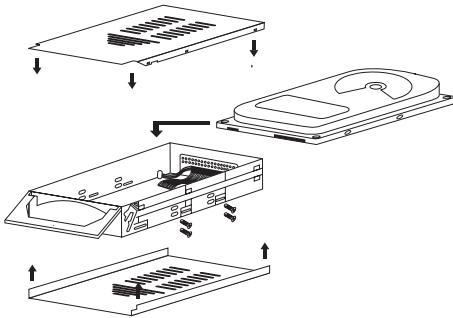
NOTE: Before installing the drawer, you will have to determine if the drive you are installing is a master or a slave. You should set the jumpers before installing the drive into the drive drawer. Contact the hard drive manufacturer for more details.

Installing the Hard Drive in the Caddy

1. Using a flat screwdriver (or similar object) in the four indentations on the side of the caddy, remove the top and bottom panels.
2. Connect the gray-beige IDE ribbon to the hard drive, making sure that the red wire is on Pin 1.

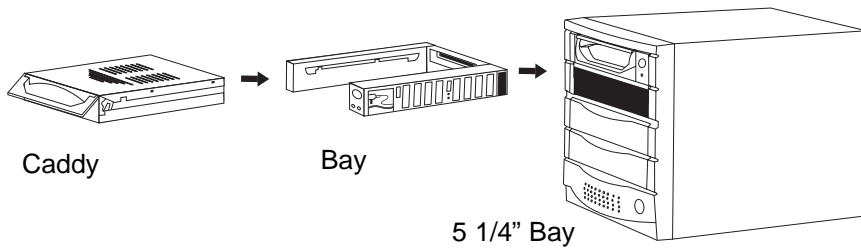
NOTE: If you are unsure of the location of Pin 1, contact your hard drive manufacturer.

3. Attach the power connector to the hard drive.
4. Using the 6-32 x 1/4" (coarse thread) screws, mount your hard drive into the drawer.
5. Replace the top and bottom panels of the drawer.



Installing the Caddy in the Bay

1. Slide the caddy into the bay until it is firmly seated.
2. Insert the key and turn clockwise to lock the drive into place. **The drive will not function if the drawer has not been locked.**



Installing the Bay in the PC

1. Make sure your system is unplugged and you are grounded.
2. Remove the side covers from your system and remove the front cover from an available 5 1/4" drive bay (see your computer's user manual for details, if necessary).
3. Insert the bay into the 5 1/4" bay slot.
4. Connect your computer's cable ribbon to the connector on the back of the bay,
5. Plug a connector from your computer's power supply into the power port on the back of the bay.
6. Using the M3 x 1/4" long (fine thread) screws, mount the bay into the PC.

Removing the Drive Drawer

1. Insert the key and turn counter-clockwise to unlock the drive drawer.
2. Lift the handle and gently pull the caddy out of the bay.

Monitoring Your Hard Disk Drive and Drawer

The LEDs on the front of the drive drawer are your best indication of the hard drive's activity.

SNT127A/SNT127ABK/IDE66BASIC/IDE66BASICBK

There are two LEDs located on the right side of the drive drawer. The left yellow LED indicates hard drive activity. The right green LED indicates drive power.

IDE66PRODRWR/IDEPRODRWRBK

There are four LEDs across the front of the drive drawer. They indicate (from left) the drive's activity (green), the operating status of the left fan (green), the operating status of the right fan (green), and the drive power (red).

Related Products

The following products have been designed to work with and enhance the product you have just purchased. Visit our website at www.startech.com for more details.

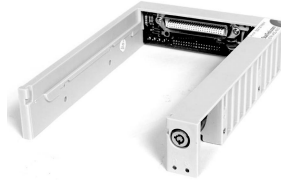
SNT127ACADDY/127ACADDYBK

These hard drive caddys are designed to fit the StarTech.com SNT127A/SNT127ABK IDE Removable Disk Drawers. They allow another drive to be swapped into a PC with an SNT127A/SNT127ABK already installed. Your PC can have several interchangeable hard drives with different software or operating systems installed. Available in black or beige.



SNT127ABAY/127ABAYBK

These extra drive bays are designed to fit with the StarTech.com SNT127/SNT127ABK IDE Removable Disk Drawers. With extra bays installed, you can bring a hard drive in an SNT127/SNT127ABK caddy to multiple computers. Available in black or beige.



IDE66CADDY

This hard drive caddy is designed to fit the StarTech.com IDE66BASIC. It allows another hard drive to be swapped into a PC with a IDE66BASIC already installed. Your PC can have several interchangeable hard drives with different software or operating systems installed. Available in beige.



IDE66BAY

This extra bay was designed to fit with the StarTech.com IDE66BASIC. With extra bays installed, you can bring a hard drive in an IDE66BASIC caddy to multiple computers. Available in beige.



Technical Support

The following technical resources are available for this StarTech.com product:

On-line help:

We are constantly adding new information to the *Tech Support* section of our web site. To access this page, click the *Tech support* link on our homepage, www.startech.com. In the tech support section there are a number of options that can provide assistance with this card.

Knowledge Base - This tool allows you to search for answers to common issues using key words that describe the product and your issue.

FAQ - This tool provides quick answers to the top questions asked by our customers.

Downloads - This selection takes you to our driver download page where you can find the latest drivers for this product.

Call StarTech.com tech support for help: **1-519-455-4931**

Support hours: Monday to Friday 9:00AM to 5:00PM EST (except holidays)

Warranty Information

This product is backed by a one-year warranty. In addition StarTech.com warrants its products against defects in materials and workmanship for the periods noted below, following the initial date of purchase. During this period, the products may be returned for repair, or replacement with equivalent products at our discretion. The warranty covers parts and labor costs only. StarTech.com does not warrant its products from defects or damages arising from misuse, abuse, alteration, or normal wear and tear.

Limitation of Liability

In no event shall the liability to StarTech.com Ltd. (or its officers, directors, employees or agents) for any damages (whether direct or indirect, special, punitive incidental, consequential, or otherwise), loss of profits, loss of business, or any pecuniary loss, arising out of related to the use of the product exceed the actual price paid for the product.

Some states do not allow the exclusion or limitation of incidental or consequential damages. If such laws apply, the limitations or exclusions contained in this statement may not apply to you.

Revised: August 20, 2002