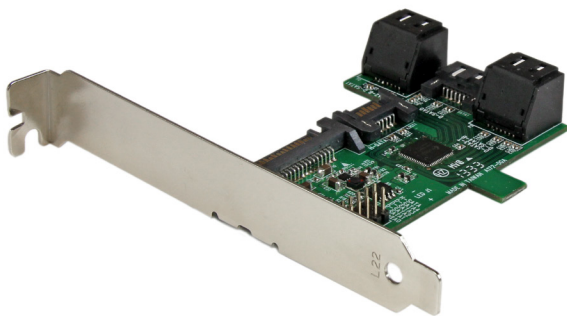


## 5-Port SATA III Port Multiplier Adapter Card

ST521PMINT



\*actual product may vary from photos

DE: Bedienungsanleitung - [de.startech.com](http://de.startech.com)

FR: Guide de l'utilisateur - [fr.startech.com](http://fr.startech.com)

ES: Guía del usuario - [es.startech.com](http://es.startech.com)

IT: Guida per l'uso - [it.startech.com](http://it.startech.com)

NL: Gebruiksaanwijzing - [nl.startech.com](http://nl.startech.com)

PT: Guia do usuário - [pt.startech.com](http://pt.startech.com)

For the most up-to-date information, please visit: [www.startech.com](http://www.startech.com)

## FCC Compliance Statement

This equipment has been tested and found to comply with the limits for a Class B digital device, pursuant to part 15 of the FCC Rules. These limits are designed to provide reasonable protection against harmful interference in a residential installation. This equipment generates, uses and can radiate radio frequency energy and, if not installed and used in accordance with the instructions, may cause harmful interference to radio communications. However, there is no guarantee that interference will not occur in a particular installation. If this equipment does cause harmful interference to radio or television reception, which can be determined by turning the equipment off and on, the user is encouraged to try to correct the interference by one or more of the following measures:

- Reorient or relocate the receiving antenna.
- Increase the separation between the equipment and receiver.
- Connect the equipment into an outlet on a circuit different from that to which the receiver is connected.
- Consult the dealer or an experienced radio/TV technician for help

This device complies with part 15 of the FCC Rules. Operation is subject to the following two conditions: (1) This device may not cause harmful interference, and (2) this device must accept any interference received, including interference that may cause undesired operation.

Changes or modifications not expressly approved by StarTech.com could void the user's authority to operate the equipment.

## Industry Canada Statement

This Class B digital apparatus complies with Canadian ICES-003.

Cet appareil numérique de la classe [B] est conforme à la norme NMB-003 du Canada.

CAN ICES-3 (B)/NMB-3(B)

## Use of Trademarks, Registered Trademarks, and other Protected Names and Symbols

This manual may make reference to trademarks, registered trademarks, and other protected names and/or symbols of third-party companies not related in any way to StarTech.com. Where they occur these references are for illustrative purposes only and do not represent an endorsement of a product or service by StarTech.com, or an endorsement of the product(s) to which this manual applies by the third-party company in question. Regardless of any direct acknowledgement elsewhere in the body of this document, StarTech.com hereby acknowledges that all trademarks, registered trademarks, service marks, and other protected names and/or symbols contained in this manual and related documents are the property of their respective holders.

# Table of Contents

<b>Introduction</b> .....	<b>1</b>
System Requirements.....	1
Package Contents .....	1
<b>Product Diagram</b> .....	<b>2</b>
Front View .....	2
Rear View.....	2
<b>Hardware Installation</b> .....	<b>3</b>
Bracket Installation.....	3
System Installation .....	4
<b>Technical Support</b> .....	<b>7</b>
<b>Warranty Information</b> .....	<b>7</b>

# Introduction

## System Requirements

- 1x computer system with available SATA port (Port Multiplier support required)
- 5x SATA HDD / SSD

## Package Contents

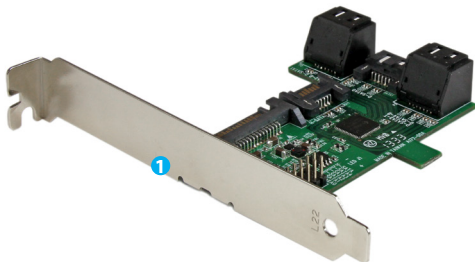
- 1X – 5-Port SATA III Port Multiplier Adapter Card (ST521PMINT)
- 1X – SATA Cable
- 1X – SATA Power Y Splitter Cable Adapter – M/F
- 1x – Low Profile Bracket
- 1X – Instruction Manual

**WARNING!** Hard drives and storage controllers require careful handling. If you are not careful with your hard disk, lost data may result. Always handle your hard drive and storage device with caution. Be sure that you are properly grounded by wearing an anti-static strap when handling computer components or discharge yourself of any static electricity build-up by touching a large grounded metal surface (such as the computer case) for several seconds.

# Product Diagram

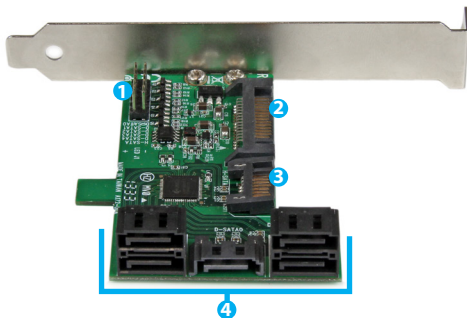
## Front View

1. Installation Bracket (Full Profile Bracket installed).



## Rear View

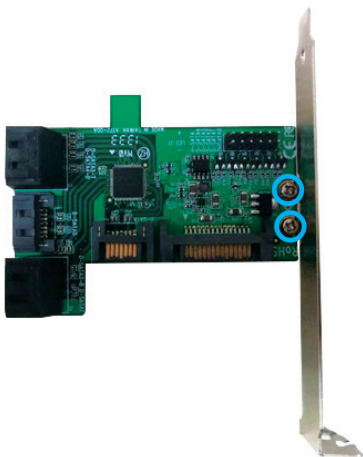
1. LED headers.
2. Power connection port.
3. Host computer SATA connection port.
4. SATA drive connection ports.



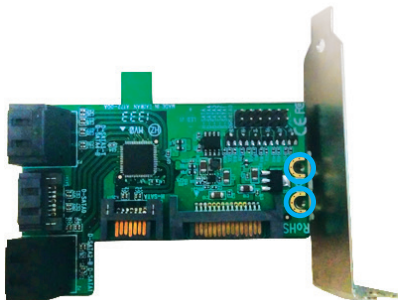
# Hardware Installation

## Bracket Installation

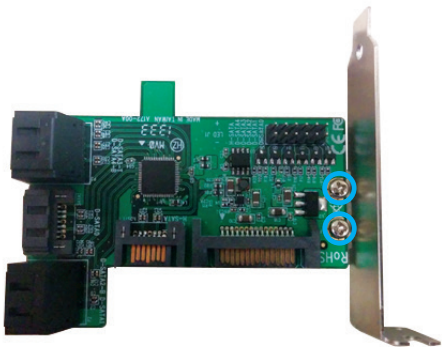
1. Remove the undesired bracket by unscrewing the bracket screws from the top of the ST521PMINT board using a small Phillips head screw driver (not included).



2. Replace the undesired bracket with your desired bracket lining up the mounting holes on the bracket with the bracket holes on the on the bottom of the ST521PMINT.



3. Drive the screws through the bracket holes on the ST521PMINT into the mounting holes on your desired bracket using the small Philips head screw driver.

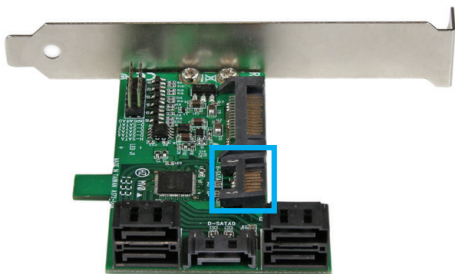


4. Your desired bracket has now been installed.

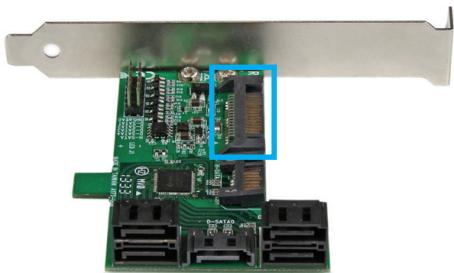
## System Installation

**Note:** The SATA controller that the ST521PMINT is connected to must support Port Multiplier.

1. Open your computer case (refer to the computer case user manual for details), and place the ST521PMINT into an available expansion slot.
2. Using a computer case screw (not included) and the appropriate corresponding screw driver (not included), drive the screw into the computer case through the case mounting hole on the mounting bracket (refer to the computer case user manual for details).
3. Connect the included SATA cable from your motherboard to the Host computer SATA connection port on the ST521PMINT.

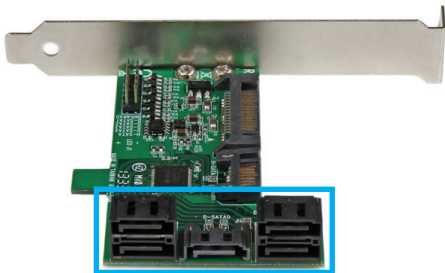


4. Connect a SATA Power cable from your power supply to the power connection port on the ST521PMINT.



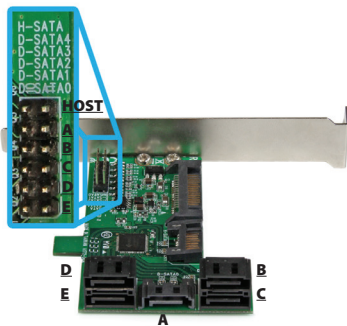


- Using SATA cables (not included), connect each of your five SATA drives to the SATA drive connection ports on the ST521PMINT.



**Note:** Ensure each of the SATA hard drives are powered from your computer power supply.

- (Optional) If your computer case supports HDD activity LEDs you can connect the LED cables from your computer case to the LED headers on the ST521PMINT enabling your computer case to indicate to you when your hard drives are being accessed. Use diagram below to determine which LED indicator represents each SATA connector.



**Note:** HOST LED will indicate for any activity from any of the drives connected to the ST521PMINT.

- Replace the cover on your computer system, and installation is now completed.

# Technical Support

StarTech.com's lifetime technical support is an integral part of our commitment to provide industry-leading solutions. If you ever need help with your product, visit [www.startech.com/support](http://www.startech.com/support) and access our comprehensive selection of online tools, documentation, and downloads.

For the latest drivers/software, please visit [www.startech.com/downloads](http://www.startech.com/downloads)

## Warranty Information

This product is backed by a two year warranty.

In addition, StarTech.com warrants its products against defects in materials and workmanship for the periods noted, following the initial date of purchase. During this period, the products may be returned for repair, or replacement with equivalent products at our discretion. The warranty covers parts and labor costs only. StarTech.com does not warrant its products from defects or damages arising from misuse, abuse, alteration, or normal wear and tear.

### Limitation of Liability

In no event shall the liability of StarTech.com Ltd. and StarTech.com USA LLP (or their officers, directors, employees or agents) for any damages (whether direct or indirect, special, punitive, incidental, consequential, or otherwise), loss of profits, loss of business, or any pecuniary loss, arising out of or related to the use of the product exceed the actual price paid for the product. Some states do not allow the exclusion or limitation of incidental or consequential damages. If such laws apply, the limitations or exclusions contained in this statement may not apply to you.

Hard-to-find made easy. At StarTech.com, that isn't a slogan. It's a promise.

StarTech.com is your one-stop source for every connectivity part you need. From the latest technology to legacy products — and all the parts that bridge the old and new — we can help you find the parts that connect your solutions.

We make it easy to locate the parts, and we quickly deliver them wherever they need to go. Just talk to one of our tech advisors or visit our website. You'll be connected to the products you need in no time.

Visit [www.startech.com](http://www.startech.com) for complete information on all StarTech.com products and to access exclusive resources and time-saving tools.

*StarTech.com is an ISO 9001 Registered manufacturer of connectivity and technology parts. StarTech.com was founded in 1985 and has operations in the United States, Canada, the United Kingdom and Taiwan servicing a worldwide market.*