

2 Port USB 3.0 Dual System KVM Swap Adapter with File Transfer

SVUSB3DSA



*actual product may vary from photos

DE: Bedienungsanleitung - de.startech.com

FR: Guide de l'utilisateur - fr.startech.com

ES: Guía del usuario - es.startech.com

IT: Guida per l'uso - it.startech.com

NL: Gebruiksaanwijzing - nl.startech.com

PT: Guia do usuário - pt.startech.com

For the most up-to-date information, please visit: www.startech.com

FCC Compliance Statement

This equipment has been tested and found to comply with the limits for a Class B digital device, pursuant to part 15 of the FCC Rules. These limits are designed to provide reasonable protection against harmful interference in a residential installation. This equipment generates, uses and can radiate radio frequency energy and, if not installed and used in accordance with the instructions, may cause harmful interference to radio communications. However, there is no guarantee that interference will not occur in a particular installation. If this equipment does cause harmful interference to radio or television reception, which can be determined by turning the equipment off and on, the user is encouraged to try to correct the interference by one or more of the following measures:

- Reorient or relocate the receiving antenna.
- Increase the separation between the equipment and receiver.
- Connect the equipment into an outlet on a circuit different from that to which the receiver is connected.
- Consult the dealer or an experienced radio/TV technician for help.

Use of Trademarks, Registered Trademarks, and other Protected Names and Symbols

This manual may make reference to trademarks, registered trademarks, and other protected names and/or symbols of third-party companies not related in any way to StarTech.com. Where they occur these references are for illustrative purposes only and do not represent an endorsement of a product or service by StarTech.com, or an endorsement of the product(s) to which this manual applies by the third-party company in question. Regardless of any direct acknowledgement elsewhere in the body of this document, StarTech.com hereby acknowledges that all trademarks, registered trademarks, service marks, and other protected names and/or symbols contained in this manual and related documents are the property of their respective holders.

Table of Contents

Introduction	2
Packaging Contents	2
System Requirements.....	2
Installation	2
Verifying Installation	6
Operation	7
Keyboard and Mouse Sharing	7
Display Sharing	8
File Transfer.....	10
Hiding / Re-Opening the Toolbar	11
Specifications	12
Technical Support	13
Warranty Information	13

Introduction

Packaging Contents

- 1x USB 3.0 Dual System Swap Adapter
- 1x Driver CD
- 1x Instruction Manual

System Requirements

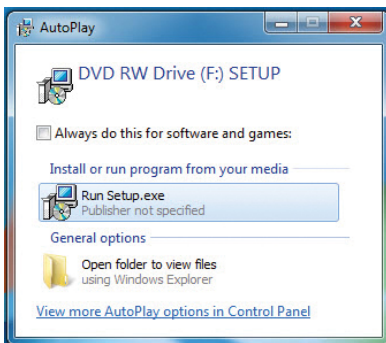
- Available USB 2.0/3.0 port (USB 3.0 recommended)
- CPU: Intel Core i3 2.8GHz or higher
- RAM: 2GB memory or higher
- Windows® 8 / 8.1 (32/64bit), 7 (32/64), Vista(32/64), XP(32/64)

Installation

Notes:

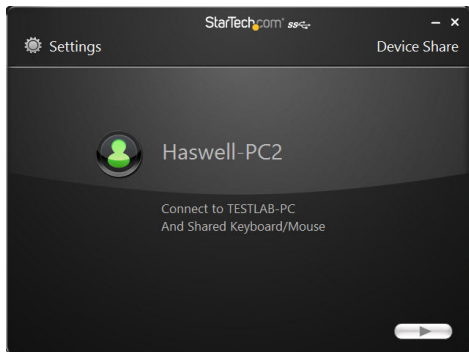
- The adapter should not be connected to either system until the software is installed and the system has been restarted.
- It is not recommended to connect the USB 3.0 Dual System Swap Adapter via an external USB Hub.
- It is recommended to un-install other USB to Graphics drivers before installing USB 3.0 Dual System Swap adapter drivers (they can be re-installed afterwards).

1. Insert the included Driver CD into your CD/DVD drive.
2. On the first of your 2 systems that will be connected to the adapter, run the **Setup.exe** application from the Autoplay menu. If Autoplay is disabled on your system, browse to your CD/DVD drive and run the application.



3. Follow the on-screen instructions to complete the installation, and restart the system when prompted.
4. Repeat the software installation on the second system, and restart when complete.
5. Connect the adapter to an available USB port on both computers. The drivers may take a moment to configure before displaying the “Settings” screen (shown below). Click the arrow to begin.

Note: The software uses color (blue and green) to help you distinguish which computer you are connected to / making adjustments on, with a matching colored logo on the connectors of the device.



6. On the first system, select the position of the other computer and click the Next arrow.



7. Select your desired display mode to enter when using display sharing:

Extended Mode

- Allows the attached computer to work as an extended display of the on-board screen.
- You may change the relative position of the two computers in Display Settings (shown above).

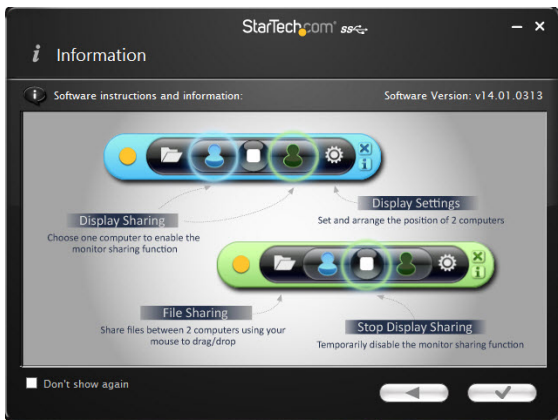
Mirror Mode

- Allows the same contents of the on-board screen to be displayed (mirrored) on the other computer.
- The screen resolution setting on the attached computer will follow the on-board screen resolution. For example, if the on-board screen operates at 1024x768x32bit, then the mirrored computer will retain the same resolution.



Note: If you would like the system to remember this selection and not display upon re-connection, check the box at the bottom of this screen.

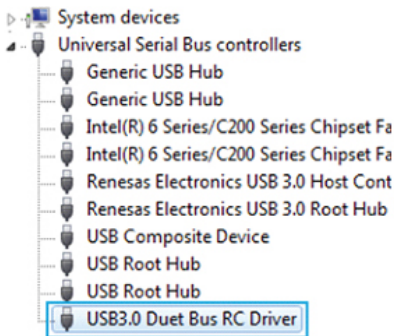
- Review the information screen (shown below), which outlines the function of each button on the toolbar, and confirm your settings (bottom right corner).



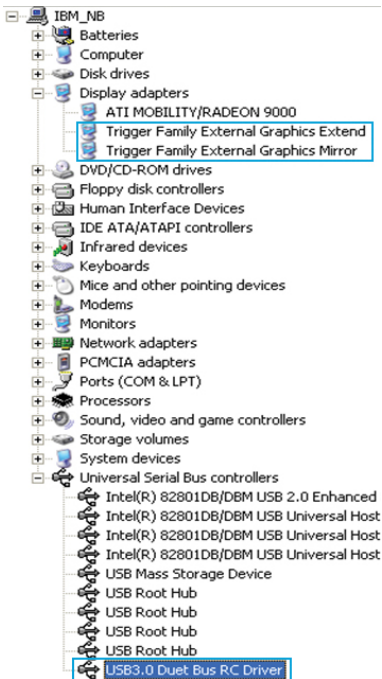
- Repeat steps 6-8 on the second system.

Verifying Installation

1. Open the Device Manager by right-clicking on **Computer**, and then select **Manage**. In the new *Computer Management* window, select **Device Manager** from the left window panel (For Windows 8, open the **Control Panel** and select **Device Manager**).
2. Expand the section(s) below, depending on your OS:
 - a. **Windows 8 / 7:** Expand the “*Universal Serial Bus controllers*” section. On a successful install, you should see the following devices in the list with no exclamation points or question marks.



- b. **Windows XP / Vista:** Expand the “*Display Adapters*” and “*Universal Serial Bus controllers*” sections. On a successful install, you should see the following devices in the list with no exclamation points or question marks.



Operation

Keyboard and Mouse Sharing

The SVUSB3DSA device enables you to control either system, with the keyboard and mouse (or touchpad) set connected to either computer.

- Move your mouse cursor between the two computers naturally.
- Use the keyboard of the first computer to type on the second computer (keyboard function follows the position of the mouse cursor).



Display Sharing

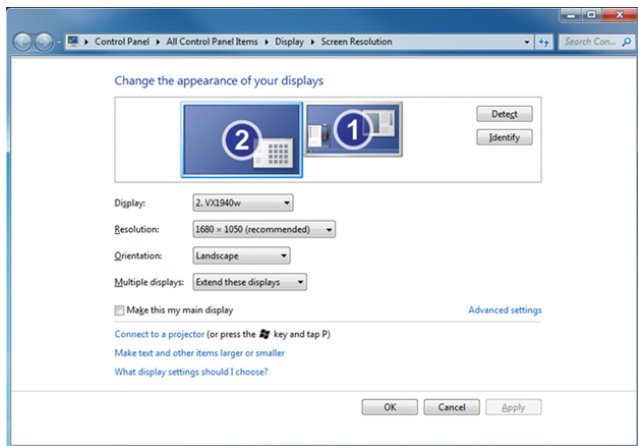
Clicking the Display Sharing buttons on the toolbar enables you to either mirror or extend the display from one of the connected computers to the other.

To start Display Sharing:

1. Click either the blue, or the green icon on the toolbar to indicate which computer's display you would like to share.



2. If you would like to make adjustments to the display settings when sharing, open the Windows display settings as if the secondary display(s) were directly connected and adjust as needed.



3. To stop Display Sharing, click the stop button on the toolbar



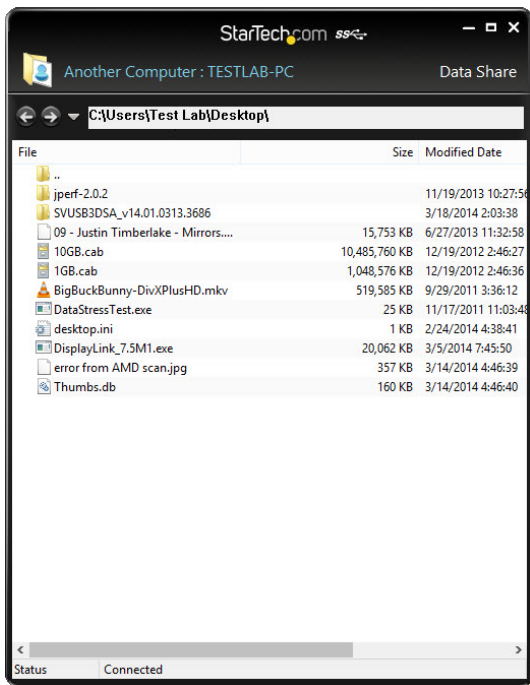
Note: Touch Screen Control (for Windows 8 or above) - If the computer has a touch screen, you can use the touch screen to control the computer being mirrored or extended.

File Transfer

Clicking the file sharing button on the toolbar opens a file transfer screen, which enables you to transfer data to / from your other system using one of the following methods:

- Drag-and-Drop
- Copy / Paste (files)
- Clipboard Sharing: Copy your selected text from the 1st computer and paste it on the 2nd computer

Note: The device simultaneously supports the File Transfer and Display Sharing.

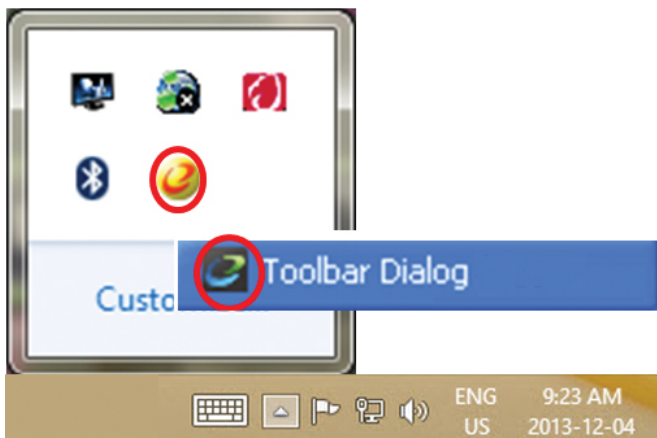


Hiding / Re-Opening the Toolbar

The toolbar can be closed using the 'x' button in the top right corner:



To restore the toolbar, click on the icon in the system tray and select the Toolbar Dialog option:



Specifications

Number of Ports	2
Connectors	2 x USB 3.0 Type A Male
LEDs	2 x Link
Switching Methods	Mouse Movement, Toolbar
Chipset ID	MCT – WH90
Operating Temperature	0°C to 50°C (32°F to 122°F)
Storage Temperature	-10°C to 75°C (14°F to 167°F)
Humidity	0~85% RH (Non-Condensing)
Cable Length	1.5m (5ft)
Weight	36g
Supported Operating Systems	Windows® 8 / 8.1 (32/64bit), 7 (32/64), Vista(32/64), XP(32/64)

Technical Support

StarTech.com's lifetime technical support is an integral part of our commitment to provide industry-leading solutions. If you ever need help with your product, visit www.startech.com/support and access our comprehensive selection of online tools, documentation, and downloads.

For the latest drivers/software, please visit www.startech.com/downloads

Warranty Information

This product is backed by a two year warranty.

In addition, StarTech.com warrants its products against defects in materials and workmanship for the periods noted, following the initial date of purchase. During this period, the products may be returned for repair, or replacement with equivalent products at our discretion. The warranty covers parts and labor costs only. StarTech.com does not warrant its products from defects or damages arising from misuse, abuse, alteration, or normal wear and tear.

Limitation of Liability

In no event shall the liability of StarTech.com Ltd. and StarTech.com USA LLP (or their officers, directors, employees or agents) for any damages (whether direct or indirect, special, punitive, incidental, consequential, or otherwise), loss of profits, loss of business, or any pecuniary loss, arising out of or related to the use of the product exceed the actual price paid for the product. Some states do not allow the exclusion or limitation of incidental or consequential damages. If such laws apply, the limitations or exclusions contained in this statement may not apply to you.

Hard-to-find made easy. At StarTech.com, that isn't a slogan. It's a promise.

StarTech.com is your one-stop source for every connectivity part you need. From the latest technology to legacy products — and all the parts that bridge the old and new — we can help you find the parts that connect your solutions.

We make it easy to locate the parts, and we quickly deliver them wherever they need to go. Just talk to one of our tech advisors or visit our website. You'll be connected to the products you need in no time.

Visit www.startech.com for complete information on all StarTech.com products and to access exclusive resources and time-saving tools.

StarTech.com is an ISO 9001 Registered manufacturer of connectivity and technology parts. StarTech.com was founded in 1985 and has operations in the United States, Canada, the United Kingdom and Taiwan servicing a worldwide market.