

USB to Bluetooth Version 4.0 Adapter - 10m Class 2

USBBT2EDR4



*actual product may vary from photos

DE: Bedienungsanleitung - de.startech.com

FR: Guide de l'utilisateur - fr.startech.com

ES: Guía del usuario - es.startech.com

IT: Guida per l'uso - it.startech.com

NL: Gebruiksaanwijzing - nl.startech.com

PT: Guia do usuário - pt.startech.com

For the most up-to-date information, please visit: www.startech.com

FCC Compliance Statement

This equipment has been tested and found to comply with the limits for a Class B digital device, pursuant to part 15 of the FCC Rules. These limits are designed to provide reasonable protection against harmful interference in a residential installation. This equipment generates, uses and can radiate radio frequency energy and, if not installed and used in accordance with the instructions, may cause harmful interference to radio communications. However, there is no guarantee that interference will not occur in a particular installation. If this equipment does cause harmful interference to radio or television reception, which can be determined by turning the equipment off and on, the user is encouraged to try to correct the interference by one or more of the following measures:

- Reorient or relocate the receiving antenna.
- Increase the separation between the equipment and receiver.
- Connect the equipment into an outlet on a circuit different from that to which the receiver is connected.
- Consult the dealer or an experienced radio/TV technician for help

This device complies with part 15 of the FCC Rules. Operation is subject to the following two conditions: (1) This device may not cause harmful interference, and (2) this device must accept any interference received, including interference that may cause undesired operation.

Changes or modifications not expressly approved by StarTech.com could void the user's authority to operate the equipment.

Industry Canada Statement

This Class B digital apparatus complies with Canadian ICES-003.

Cet appareil numérique de la classe [B] est conforme à la norme NMB-003 du Canada.

This device complies with Industry Canada licence-exempt RSS standard(s).

Operation is subject to the following two conditions:

- (1) This device may not cause interference, and
- (2) This device must accept any interference, including interference that may cause undesired operation of the device.

Le présent appareil est conforme aux CNR d'Industrie Canada applicables aux appareils radio exempts de licence.

L'exploitation est autorisée aux deux conditions suivantes:

- (1) l'appareil ne doit pas produire de brouillage, et
- (2) l'utilisateur de l'appareil doit accepter tout brouillage radioélectrique subi, même si le brouillage est susceptible d'en compromettre le fonctionnement.

IC Radiation Exposure Statement:

This equipment complies with IC RSS-102 radiation exposure limit set forth for an uncontrolled environment. This equipment should be installed and operated with minimum distance 20cm between the radiator and your body.

Déclaration d'exposition à la radiation:

Cet équipement respecte les limites d'exposition aux rayonnements IC définies pour un environnement non contrôlé. Cet équipement doit être installé et mis en marche à une distance minimale de 20 cm qui sépare l'élément rayonnant de votre corps.

L'émetteur ne doit ni être utilisé avec une autre antenne ou un autre émetteur ni se trouver à leur proximité.

FCC ID: YX6BU4086

IC: 11232A-USBTT2EDR4



Use of Trademarks, Registered Trademarks, and other Protected Names and Symbols

This manual may make reference to trademarks, registered trademarks, and other protected names and/or symbols of third-party companies not related in any way to StarTech.com. Where they occur these references are for illustrative purposes only and do not represent an endorsement of a product or service by StarTech.com, or an endorsement of the product(s) to which this manual applies by the third-party company in question. Regardless of any direct acknowledgement elsewhere in the body of this document, StarTech.com hereby acknowledges that all trademarks, registered trademarks, service marks, and other protected names and/or symbols contained in this manual and related documents are the property of their respective holders.

Table of Contents

Introduction	1
Packaging Contents	1
System Requirements.....	1
Installation	1
Windows 8 / Mac OS 10.8 – 10.9.....	1
Windows 7 / Vista / XP	1
Operation	4
Windows.....	4
Mac OS.....	4
Specifications	5
Technical Support	6
Warranty Information	6

Introduction

Packaging Contents

- 1 x USB Bluetooth Adapter
- 1 x Driver CD
- 1 x Instruction Manual

System Requirements

- USB-enabled computer with an available USB port
- Windows® 8 (32/64 bit), 7 (32/64), Vista (32/64), XP (32/64), Windows® Server 2003 (32/64), Mac OS 10.8 – 10.9

Installation

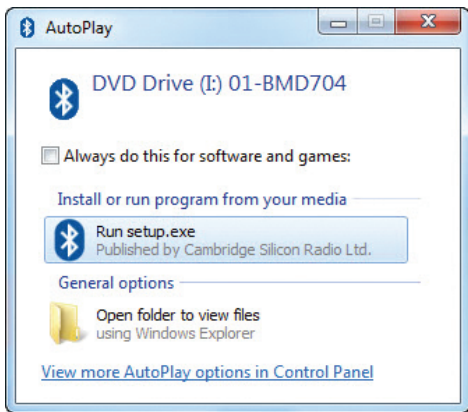
Windows 8 / Mac OS 10.8 – 10.9

1. Connect the Bluetooth adapter to an available USB port.
2. The adapter should auto-install using native drivers.

Windows 7 / Vista / XP

Note: please do not insert the USB adapter into the USB port prior to software installation.

1. Insert the included Driver CD into the computer's CD/DVD drive.
2. Run the **Install.exe** application from the Autoplay menu. If Autoplay is disabled on your system, browse to your CD/DVD drive and run the application.



3. Choose your operating system from the list to install the software.



4. Follow the on screen instructions to complete the installation. During the installation process, you may be prompted to insert your USB adapter. Connect the USB adapter to an available USB port and the installation will continue (For Windows XP, click **OK** once the adapter is connected).

Windows 7 / Vista



Windows XP



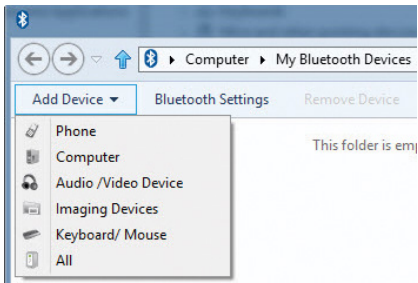
NOTE: You may be prompted to restart once the install completes.

Operation

Once installed, you will need to pair your Bluetooth devices with the adapter.

Windows

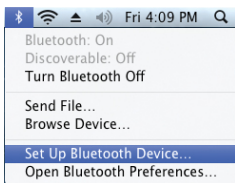
1. Open the “My Bluetooth Devices” window by double-clicking the tray icon (or the desktop icon).
2. Select Add Device, then choose your device type from the drop-down menu – ensure your device is in pairing mode so that it can be detected (consult your device’s operating instructions).



3. Select the device you would like to connect from the list displayed and confirm your selection to connect.

Mac OS

1. Select the Bluetooth icon from the menu bar and then select Set Up Bluetooth Device – ensure your device is in pairing mode so that it can be detected (consult your device’s operating instructions)



2. Select the device you would like to connect from the list displayed and confirm your selection to connect.

Specifications

Host Interface	USB 2.0
Chipset	Broadcom - 20702
Supported Standards	Bluetooth v4.0, v2.1, EDR
Connectors	1 x USB Type A Male
LED Indicator(s)	1 x Power / Activity
Range	10 m (32.8 ft.)
Maximum Data Transfer Rate	3 Mbps
Frequency	2.4GHz ~ 2.4835GHz
Power Adapter	USB-Powered
Enclosure Material	Plastic
Operating Temperature	-10°C to 50°C (14°F to 122°F)
Storage Temperature	-20°C to 70°C (-4°F to 158°F)
Humidity	0~90% RH
Dimensions	19 x 15 x 6 mm
Weight	3 g
Compatible Operating Systems	Windows® 8 (32/64bit), 7 (32/64), Vista (32/64), XP (32/64)

Technical Support

StarTech.com's lifetime technical support is an integral part of our commitment to provide industry-leading solutions. If you ever need help with your product, visit www.startech.com/support and access our comprehensive selection of online tools, documentation, and downloads.

For the latest drivers/software, please visit www.startech.com/downloads

Warranty Information

This product is backed by a two year warranty.

In addition, StarTech.com warrants its products against defects in materials and workmanship for the periods noted, following the initial date of purchase. During this period, the products may be returned for repair, or replacement with equivalent products at our discretion. The warranty covers parts and labor costs only. StarTech.com does not warrant its products from defects or damages arising from misuse, abuse, alteration, or normal wear and tear.

Limitation of Liability

In no event shall the liability of StarTech.com Ltd. and StarTech.com USA LLP (or their officers, directors, employees or agents) for any damages (whether direct or indirect, special, punitive, incidental, consequential, or otherwise), loss of profits, loss of business, or any pecuniary loss, arising out of or related to the use of the product exceed the actual price paid for the product. Some states do not allow the exclusion or limitation of incidental or consequential damages. If such laws apply, the limitations or exclusions contained in this statement may not apply to you.

Hard-to-find made easy. At StarTech.com, that isn't a slogan. It's a promise.

StarTech.com is your one-stop source for every connectivity part you need. From the latest technology to legacy products — and all the parts that bridge the old and new — we can help you find the parts that connect your solutions.

We make it easy to locate the parts, and we quickly deliver them wherever they need to go. Just talk to one of our tech advisors or visit our website. You'll be connected to the products you need in no time.

Visit www.startech.com for complete information on all StarTech.com products and to access exclusive resources and time-saving tools.

StarTech.com is an ISO 9001 Registered manufacturer of connectivity and technology parts. StarTech.com was founded in 1985 and has operations in the United States, Canada, the United Kingdom and Taiwan servicing a worldwide market.