

# 1 Port Gigabit Ethernet Network ExpressCard

EC1000S



\*actual product may vary from photos

DE: Bedienungsanleitung - [de.startech.com](http://de.startech.com)

FR: Guide de l'utilisateur - [fr.startech.com](http://fr.startech.com)

ES: Guía del usuario - [es.startech.com](http://es.startech.com)

IT: Guida per l'uso - [it.startech.com](http://it.startech.com)

NL: Gebruiksaanwijzing - [nl.startech.com](http://nl.startech.com)

PT: Guia do usuário - [pt.startech.com](http://pt.startech.com)

For the most up-to-date information, please visit: [www.startech.com](http://www.startech.com)

## FCC Compliance Statement

This equipment has been tested and found to comply with the limits for a Class B digital device, pursuant to part 15 of the FCC Rules. These limits are designed to provide reasonable protection against harmful interference in a residential installation. This equipment generates, uses and can radiate radio frequency energy and, if not installed and used in accordance with the instructions, may cause harmful interference to radio communications. However, there is no guarantee that interference will not occur in a particular installation. If this equipment does cause harmful interference to radio or television reception, which can be determined by turning the equipment off and on, the user is encouraged to try to correct the interference by one or more of the following measures:

Reorient or relocate the receiving antenna.

Increase the separation between the equipment and receiver.

Connect the equipment into an outlet on a circuit different from that to which the receiver is connected.

Consult the dealer or an experienced radio/TV technician for help.

## Use of Trademarks, Registered Trademarks, and other Protected Names and Symbols

This manual may make reference to trademarks, registered trademarks, and other protected names and/or symbols of third-party companies not related in any way to StarTech.com. Where they occur these references are for illustrative purposes only and do not represent an endorsement of a product or service by StarTech.com, or an endorsement of the product(s) to which this manual applies by the third-party company in question. Regardless of any direct acknowledgement elsewhere in the body of this document, StarTech.com hereby acknowledges that all trademarks, registered trademarks, service marks, and other protected names and/or symbols contained in this manual and related documents are the property of their respective holders.

# Table of Contents

Introduction.....	1
Packaging Contents .....	1
System Requirements .....	1
Installation.....	2
Hardware Installation.....	2
Driver Installation .....	2
Verifying Installation.....	3
Specifications.....	4
Technical Support.....	5
Warranty Information.....	5

# Introduction

The EC1000S Gigabit Ethernet Network Adapter Card can be installed in a laptop ExpressCard port, for quick and hassle-free connections to a Gigabit Ethernet network.

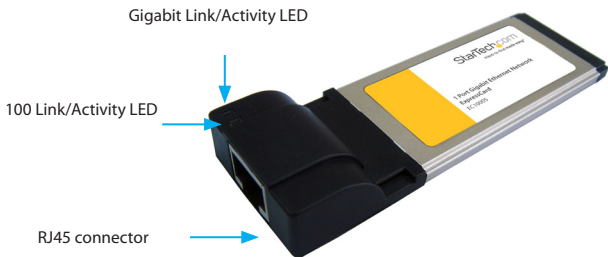
With support for data transfer rates up to 1000 Mbps, the Gigabit Ethernet Network Adapter card delivers the speed and performance needed for virtually any network-based tasks, including CAD, graphic design, digital audio authoring, and other demanding applications.

## Packaging Contents

- 1 x ExpressCard Gigabit Ethernet card
- 1 x Driver Installation CD
- 1 x Instruction Manual

## System Requirements

- ExpressCard enabled computer system with open slot
- Microsoft® Windows® 2000/ XP(32/64-bit)/ Server 2003(32/64-bit) Vista(32/64-bit)/ 7(32/64-bit)/ Server 2008 R2, or Linux and Unix, or Apple® Mac OS® 10.4.x and 10.5.x



# Installation

## Hardware Installation

The ExpressCard adapter will simply slide into the ExpressCard slot on any compatible system. Push the card all the way in, until it 'clicks' and locks into place. To eject the card, simply push the card further into the slot until it clicks, and then release and it will then be automatically ejected from the slot.

**NOTE:** Some ExpressCard/54 slots do not firmly hold an ExpressCard/34 card so a 34mm to 54mm stabilizer bracket may be necessary (StarTech.com ID: **ECBRACKET**).

Connect the Ethernet cable from your router/switch/LAN drop to the RJ45 connector on the card. The "gigabit" LED should light up when connected at gigabit speeds while the "100" LED should light up when connected to 100 Mbps speeds. No LED will light up when connected at 10 Mbps speeds.

## Driver Installation

### *Windows 2000/XP/Server 2003*

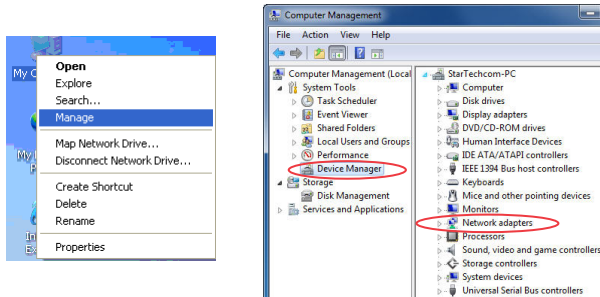
1. When the Found New Hardware wizard appears on the screen, insert the Driver CD into your CD/DVD drive. If you are prompted to connect to Windows Update, please select the "No, not this time" option and click Next.
2. Select the option "Install Drivers Automatically (Recommended)" and then click the Next button.
3. Windows should now start searching for the drivers. Once this has completed, click the Finish button.

### *Windows Vista/Server 2008 R2/7*

1. When the Found New Hardware window appears on the screen, click on the "Locate and install drivers software (recommended)" option. If prompted to search online, select the "Don't search online" option.
2. When prompted to insert the disc, insert the Driver CD that came with the card, into your CD/DVD drive and Windows will automatically proceed to search the CD.
3. If a Windows Security dialog window appears, click the "Install this driver software anyway" option to proceed.
4. Once the driver is installed, click the Close button.

## Verifying Installation

From the main desktop, right-click on “My Computer” (“Computer” in Vista/7), then select Manage. In the new Computer Management window, select Device Manager from the left window panel.



Double-click on the “Network Adapters” option. A new “Realtek” Gigabit device should be listed under this category.

# Specifications

<b>Host Interface</b>	ExpressCard 1.0
<b>Form Factor</b>	ExpressCard/34 (34mm)
<b>Chipset ID</b>	Realtek RTL8111DL
<b>Connectors</b>	1 x RJ45 Ethernet female
<b>LEDs</b>	1 x Gigabit Link/Activity 1 x 100 Mbps Link/Activity
<b>Maximum Data Transfer Rate</b>	1000 Mbps
<b>Supported Standards</b>	IEEE802.3u, IEEE802.3ab, IEEE802.1Q, IEEE802.1p
<b>Operating Temperature</b>	0°C ~ 50°C (32°F ~ 122°F)
<b>Storage Temperature</b>	-20°C ~ 60°C (-4°F ~ 140°F)
<b>Humidity</b>	5% ~ 85% RH
<b>Dimensions (LxWxH)</b>	112.0mm x 34.0mm x 13.0mm
<b>Weight</b>	55g
<b>Compatible Operating Systems</b>	Windows 2000/ XP(32/64-bit)/ Server 2003(32/64-bit) Vista(32/64-bit)/ 7(32/64-bit)/ Server 2008 R2, Linux and Unix, and Mac OS 10.4.x and 10.5.x

# Technical Support

StarTech.com's lifetime technical support is an integral part of our commitment to provide industry-leading solutions. If you ever need help with your product, visit [www.startech.com/support](http://www.startech.com/support) and access our comprehensive selection of online tools, documentation, and downloads.

## Warranty Information

This product is backed by a lifetime warranty.

In addition, StarTech.com warrants its products against defects in materials and workmanship for the periods noted, following the initial date of purchase. During this period, the products may be returned for repair, or replacement with equivalent products at our discretion. The warranty covers parts and labor costs only. StarTech.com does not warrant its products from defects or damages arising from misuse, abuse, alteration, or normal wear and tear.

### Limitation of Liability

In no event shall the liability of StarTech.com Ltd. and StarTech.com USA LLP (or their officers, directors, employees or agents) for any damages (whether direct or indirect, special, punitive, incidental, consequential, or otherwise), loss of profits, loss of business, or any pecuniary loss, arising out of or related to the use of the product exceed the actual price paid for the product. Some states do not allow the exclusion or limitation of incidental or consequential damages. If such laws apply, the limitations or exclusions contained in this statement may not apply to you.



# StarTech.com

Hard-to-find **made easy**®

Hard-to-find made easy. At StarTech.com, that isn't a slogan. It's a promise.

StarTech.com is your one-stop source for every connectivity part you need. From the latest technology to legacy products — and all the parts that bridge the old and new — we can help you find the parts that connect your solutions.

We make it easy to locate the parts, and we quickly deliver them wherever they need to go. Just talk to one of our tech advisors or visit our website. You'll be connected to the products you need in no time.

Visit **[www.startech.com](http://www.startech.com)** for complete information on all StarTech.com products and to access exclusive resources and time-saving tools.

*StarTech.com is an ISO 9001 Registered manufacturer of connectivity and technology parts. StarTech.com was founded in 1985 and has operations in the United States, Canada, the United Kingdom and Taiwan servicing a worldwide market.*