

## 2 Port 1b 1a ExpressCard 34mm Notebook 1394 FireWire Adapter

EC13941A1B



DE: Bedienungsanleitung - [de.startech.com](http://de.startech.com)

FR: Guide de l'utilisateur - [fr.startech.com](http://fr.startech.com)

ES: Guía del usuario - [es.startech.com](http://es.startech.com)

IT: Guida per l'uso - [it.startech.com](http://it.startech.com)

NL: Gebruiksaanwijzing - [nl.startech.com](http://nl.startech.com)

PT: Guia do usuário - [pt.startech.com](http://pt.startech.com)

## FCC Compliance Statement

This equipment has been tested and found to comply with the limits for a Class B digital device, pursuant to part 15 of the FCC Rules. These limits are designed to provide reasonable protection against harmful interference in a residential installation. This equipment generates, uses and can radiate radio frequency energy and, if not installed and used in accordance with the instructions, may cause harmful interference to radio communications. However, there is no guarantee that interference will not occur in a particular installation. If this equipment does cause harmful interference to radio or television reception, which can be determined by turning the equipment off and on, the user is encouraged to try to correct the interference by one or more of the following measures:

Reorient or relocate the receiving antenna.

Increase the separation between the equipment and receiver.

Connect the equipment into an outlet on a circuit different from that to which the receiver is connected.

Consult the dealer or an experienced radio/TV technician for help.

## Use of Trademarks, Registered Trademarks, and other Protected Names and Symbols

This manual may make reference to trademarks, registered trademarks, and other protected names and/or symbols of third-party companies not related in any way to StarTech.com. Where they occur these references are for illustrative purposes only and do not represent an endorsement of a product or service by StarTech.com, or an endorsement of the product(s) to which this manual applies by the third-party company in question. Regardless of any direct acknowledgement elsewhere in the body of this document, StarTech.com hereby acknowledges that all trademarks, registered trademarks, service marks, and other protected names and/or symbols contained in this manual and related documents are the property of their respective holders.

# Table of Contents

Introduction .....	1
Features.....	1
Package Contents.....	1
System Requirements .....	1
Installation.....	2
Troubleshooting.....	2
Specifications.....	3
Technical Support.....	4
Warranty Information.....	4

# Introduction

**Thank you for purchasing** a StarTech.com FireWire IEEE 1394 Express Card. This card adds external Firewire 800 (1394b) and Firewire 400 (1394a) connectivity to notebook computers to support various types of IEEE1394 (Firewire) devices including DV camcorders, hard disk drives, PC Video cameras, removable drives, CD-RWs, DVD-ROMs and other 1394 audio/video devices.

## Features

- Compliant with IEEE 1394b and backwards compatible with IEEE 1394a - 2000 as well as 1394-1995 standards
- Full single lane PCI Express (x1)
- Hot swap capabilities allows you to connect or disconnect devices without turning off your laptop
- Maximum data transfer rate of 800 Mbps
- Supports PCI Express Base Specification Revision 1.1

## Package Contents

- 1 x Adapter Cable
- 1 x FireWire ExpressCard
- 1 x Instruction Manual
- 1 x ULead Software CD

## System Requirements

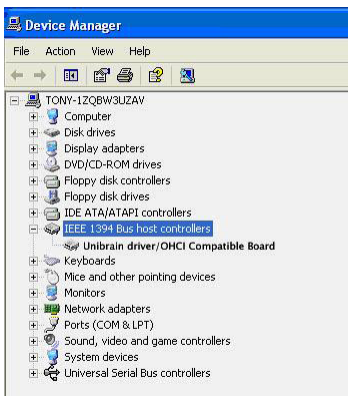
- Pentium IV or equivalent processor
- An available ExpressCard slot
- Windows® 2000/XP/Server 2003/7/Vista™, MAC OSX 10.x or higher

# Installation

1. Insert the FireWire IEEE 1394 Express Card into an open Express Card slot in the notebook.
2. The *Found New Hardware Wizard* will automatically detect and install drivers for the FireWire IEEE 1394 Express Card. Once the wizard has completed the installation of the drivers, the device is ready for use.

## Troubleshooting

To verify that the FireWire IEEE 1394 Express Card was installed correctly, open the *Device Manager* by navigating to: *My Computer*-> *Control Panel*->*System*->*Device Manager*. The EC13941A1B will appear under IEEE 1394 Bus Host Controller.



If the EC13941A1B is not functioning, ensure that none of the ports on the device are conflicting with any ports present elsewhere on the computer. Also, check to ensure that the physical connection between the PCI-E port and the EC13941A1B is snug and secure.

# Specifications

<b>Bus Type</b>	ExpressCard (34mm)
<b>Number of Ports</b>	2 IEEE FireWire Ports (1x 1394A and 1x 1394B)
<b>OS Support</b>	Windows XP/2000/2003/7/Vista™ (32 & 64-bit) MAC OSX 10.x and up
<b>Maximum Data Transfer</b>	1394A - up to 400 Mbps 1394B - up to 800 Mbps
<b>Chipset</b>	LSI L-FW643

# Technical Support

StarTech.com's lifetime technical support is an integral part of our commitment to provide industry-leading solutions. If you ever need help with your product, visit [www.startech.com/](http://www.startech.com/) support and access our comprehensive selection of online tools, documentation, and downloads.

## Warranty Information

This product is backed by a two year warranty.

In addition, StarTech.com warrants its products against defects in materials and workmanship for the periods noted, following the initial date of purchase. During this period, the products may be returned for repair, or replacement with equivalent products at our discretion. The warranty covers parts and labor costs only. StarTech.com does not warrant its products from defects or damages arising from misuse, abuse, alteration, or normal wear and tear.

### Limitation of Liability

In no event shall the liability of StarTech.com Ltd. and StarTech.com USA LLP (or their officers, directors, employees or agents) for any damages (whether direct or indirect, special, punitive, incidental, consequential, or otherwise), loss of profits, loss of business, or any pecuniary loss, arising out of or related to the use of the product exceed the actual price paid for the product. Some states do not allow the exclusion or limitation of incidental or consequential damages. If such laws apply, the limitations or exclusions contained in this statement may not apply to you.

# StarTech.com

Hard-to-find **made easy**®

Hard-to-find made easy. At StarTech.com, that isn't a slogan. It's a promise.

StarTech.com is your one-stop source for every connectivity part you need. From the latest technology to legacy products — and all the parts that bridge the old and new — we can help you find the parts that connect your solutions.

We make it easy to locate the parts, and we quickly deliver them wherever they need to go. Just talk to one of our tech advisors or visit our website. You'll be connected to the products you need in no time.

Visit **[www.startech.com](http://www.startech.com)** for complete information on all StarTech.com products and to access exclusive resources and time-saving tools.

*StarTech.com is an ISO 9001 Registered manufacturer of connectivity and technology parts. StarTech.com was founded in 1985 and has operations in the United States, Canada, the United Kingdom and Taiwan servicing a worldwide market.*