

1 Port Flush Mount eSata II ExpressCard – 34mm

ECESATA1



*actual product may vary from photos

DE: Bedienungsanleitung - de.startech.com

FR: Guide de l'utilisateur - fr.startech.com

ES: Guía del usuario - es.startech.com

IT: Guida per l'uso - it.startech.com

NL: Gebruiksaanwijzing - nl.startech.com

PT: Guia do usuário - pt.startech.com

For the most up-to-date information, please visit: www.startech.com

FCC Compliance Statement

This equipment has been tested and found to comply with the limits for a Class B digital device, pursuant to part 15 of the FCC Rules. These limits are designed to provide reasonable protection against harmful interference in a residential installation. This equipment generates, uses and can radiate radio frequency energy and, if not installed and used in accordance with the instructions, may cause harmful interference to radio communications. However, there is no guarantee that interference will not occur in a particular installation. If this equipment does cause harmful interference to radio or television reception, which can be determined by turning the equipment off and on, the user is encouraged to try to correct the interference by one or more of the following measures:

Reorient or relocate the receiving antenna.

Increase the separation between the equipment and receiver.

Connect the equipment into an outlet on a circuit different from that to which the receiver is connected.

Consult the dealer or an experienced radio/TV technician for help.

Use of Trademarks, Registered Trademarks, and other Protected Names and Symbols

This manual may make reference to trademarks, registered trademarks, and other protected names and/or symbols of third-party companies not related in any way to StarTech.com. Where they occur these references are for illustrative purposes only and do not represent an endorsement of a product or service by StarTech.com, or an endorsement of the product(s) to which this manual applies by the third-party company in question. Regardless of any direct acknowledgement elsewhere in the body of this document, StarTech.com hereby acknowledges that all trademarks, registered trademarks, service marks, and other protected names and/or symbols contained in this manual and related documents are the property of their respective holders.

Table of Contents

Introduction.....	1
Packaging Contents	1
System Requirements	1
Installation.....	1
Hardware Installation.....	1
Driver Installation	2
Verifying Installation.....	3
Specifications.....	4
Technical Support.....	5
Warranty Information.....	5

Introduction

The StarTech.com 1-Port eSATA ExpressCard adapter lets laptop and small form factor computer users experience the high performance capabilities of eSATA external storage with data transfer rates of up to 3Gbps, as well as Port Multiplier capability with command-based switching for connecting multiple external hard drives to a host PC or Mac notebook through a single eSATA connection.

Packaging Contents

- 1 x ExpressCard eSATA adapter card
- 1 x Driver CD
- 1 x Instruction Manual

System Requirements

- Pentium® 4 or later compatible CPU
- Available ExpressCard slot
- Microsoft® Windows® 2000/XP/Server 2003/Vista/7 (32/64-bit),
or Apple® Mac OS® 10.4.x/10.5.x

Installation

Hardware Installation

The ExpressCard adapter will simply slide into the ExpressCard slot on any compatible system. Push the card all the way in, until it 'clicks' and locks into place. To eject the card, simply push the card further into the slot until it clicks, and then release and it will then be ejected from the slot.

NOTE: Some ExpressCard/54 slots do not firmly hold an ExpressCard/34 module, so a 34mm to 54mm stabilizer bracket may be necessary (StarTech.com ID: ECBRACKET).

Driver Installation

Windows 2000/XP/Server 2003/Vista

1. After the hardware installation, Windows will detect the card, and a dialog box named Add New Hardware Wizard will show on the screen.
2. After the Found New Hardware wizard appears on the screen, insert the Driver CD into your CD-ROM drive. If you are prompted to connect to Windows Update, please select the "No, not this time" option and click "Next".
3. Select the option "Install Drivers Automatically (Recommended)" and then click the "Next" button.
4. Windows should now start searching for the drivers on the CD. Once this has completed, click the "Finish" button.

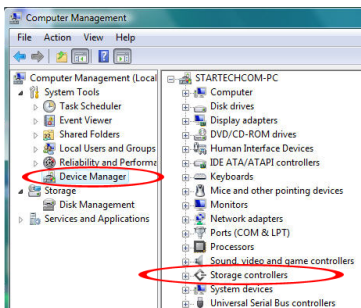
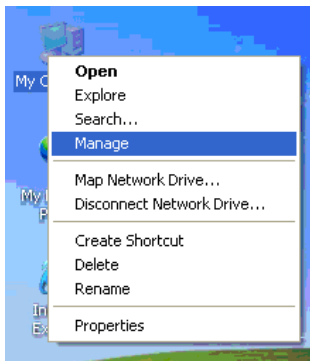
Windows Vista

1. When the Found New Hardware window appears on the screen, click on the "Locate and install drivers software (recommended)" option. If prompted to search online, select the "Don't search online" option.
2. When prompted to insert the disc, insert the Driver CD that came with the card, into your CD-ROM drive and Windows will automatically proceed to search the CD.
3. If a Windows Security dialog window appears, click the "Install this driver software anyway" option to proceed.
4. Once the driver is installed, click the "Close" button.

Verifying Installation

Windows 2000/XP/Server 2003/Vista

From the main desktop, right-click on “My Computer” (“Computer” in Vista), then select Manage. In the new Computer Management window, select Device Manager from the left window panel.



*screenshots/photos for reference only

Double-click on the “SCSI and RAID Controllers” option (“Storage Controllers” in Vista). There should be a device listed that contains “Silicon Image Sii3132” or similar in it’s name.

Specifications

Host Interface	ExpressCard 1.0a
SATA Specification	SATA Revision 2.0 (3Gb/s) and 1.0 (1.5Gb/s) compatible
Chipset	Silicon Image Sil3132
Form Factor	ExpressCard/34 (34mm)
External Connectors	1 x 7-pin eSATA
Port Multiplier Support	Yes
LBA Support	48-bit
Compatible Operating Systems	Windows 2000/ XP/ Server 2003/ Vista/ 7 (32/64-bit), Mac OS 10.4.x/ 10.5.x

Technical Support

StarTech.com's lifetime technical support is an integral part of our commitment to provide industry-leading solutions. If you ever need help with your product, visit www.startech.com/support and access our comprehensive selection of online tools, documentation, and downloads.

Warranty Information

This product is backed by a two year warranty.

In addition, StarTech.com warrants its products against defects in materials and workmanship for the periods noted, following the initial date of purchase. During this period, the products may be returned for repair, or replacement with equivalent products at our discretion. The warranty covers parts and labor costs only. StarTech.com does not warrant its products from defects or damages arising from misuse, abuse, alteration, or normal wear and tear.

Limitation of Liability

In no event shall the liability of StarTech.com Ltd. and StarTech.com USA LLP (or their officers, directors, employees or agents) for any damages (whether direct or indirect, special, punitive, incidental, consequential, or otherwise), loss of profits, loss of business, or any pecuniary loss, arising out of or related to the use of the product exceed the actual price paid for the product. Some states do not allow the exclusion or limitation of incidental or consequential damages. If such laws apply, the limitations or exclusions contained in this statement may not apply to you.

StarTech.com

Hard-to-find **made easy**®

Hard-to-find made easy. At StarTech.com, that isn't a slogan. It's a promise.

StarTech.com is your one-stop source for every connectivity part you need. From the latest technology to legacy products — and all the parts that bridge the old and new — we can help you find the parts that connect your solutions.

We make it easy to locate the parts, and we quickly deliver them wherever they need to go. Just talk to one of our tech advisors or visit our website. You'll be connected to the products you need in no time.

Visit **www.startech.com** for complete information on all StarTech.com products and to access exclusive resources and time-saving tools.

StarTech.com is an ISO 9001 Registered manufacturer of connectivity and technology parts. StarTech.com was founded in 1985 and has operations in the United States, Canada, the United Kingdom and Taiwan servicing a worldwide market.