

**EC2S55254**  
**EC1S1P55254**

**Instruction Manual**

# ExpressCard Serial Adapter

**2-Port Native ExpressCard/54  
RS232 Serial Card - 16550 UART**

**1-Port Serial, 1-Port Parallel  
ExpressCard/54 Combo Card  
with 16550 UART**

**StarTech.com**

Hard-to-find made easy

## **FCC Compliance Statement**

This equipment has been tested and found to comply with the limits for a Class B digital device, pursuant to part 15 of the FCC Rules. These limits are designed to provide reasonable protection against harmful interference in a residential installation. This equipment generates, uses and can radiate radio frequency energy and, if not installed and used in accordance with the instructions, may cause harmful interference to radio communications. However, there is no guarantee that interference will not occur in a particular installation. If this equipment does cause harmful interference to radio or television reception, which can be determined by turning the equipment off and on, the user is encouraged to try to correct the interference by one or more of the following measures:

- Reorient or relocate the receiving antenna.
- Increase the separation between the equipment and receiver.
- Connect the equipment into an outlet on a circuit different from that to which the receiver is connected.
- Consult the dealer or an experienced radio/TV technician for help.

## **Use of Trademarks, Registered Trademarks, and other Protected Names and Symbols**

This manual may make reference to trademarks, registered trademarks, and other protected names and/or symbols of third-party companies not related in any way to StarTech.com. Where they occur these references are for illustrative purposes only and do not represent an endorsement of a product or service by StarTech.com, or an endorsement of the product(s) to which this manual applies by the third-party company in question. Regardless of any direct acknowledgement elsewhere in the body of this document, StarTech.com hereby acknowledges that all trademarks, registered trademarks, service marks, and other protected names and/or symbols contained in this manual and related documents are the property of their respective holders.

# Table of Contents

<b>Introduction .....</b>	<b>1</b>
Packaging Contents.....	1
System Requirements .....	1
EC2S55254 .....	2
EC1S1P55254.....	2
<b>Installation.....</b>	<b>3</b>
Hardware Installation.....	3
Driver Installation.....	3
Verifying Installation.....	4
<b>Specifications.....</b>	<b>5</b>
<b>Technical Support.....</b>	<b>6</b>
<b>Warranty Information .....</b>	<b>6</b>

## Introduction

The EC2S55254 2-Port Native 54mm ExpressCard RS232 Serial Adapter Card and EC1S1P55254 1S1P 54mm ExpressCard Serial Parallel Card with 16550 UART lets you add two RS232 serial ports or one serial and one parallel port to your laptop using an available 54mm ExpressCard slot.

This high-performance RS232 ExpressCard adapter with included breakout cable features a 256 byte transmit/receive FIFO buffer and supports baud rates up to 128Kbps, with parallel data rates up to 1.5Mbps. A native chipset provides reliability and performance improvements, as well as lower CPU loads and power consumption over conventional bridge-chip serial cards.

Designed for use with laptop computers equipped with 54mm ExpressCard slots, this serial card offers a broad operating system compatibility list including Windows®, Mac OS X and Linux for simple integration into almost any system.

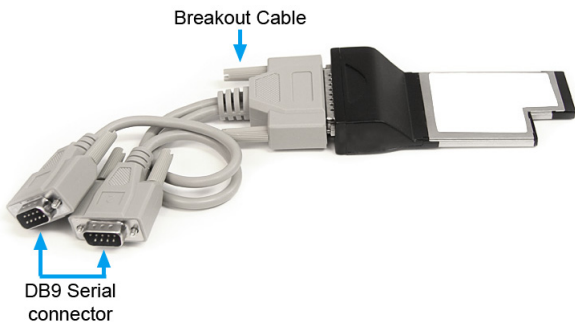
## Packaging Contents

- 1 x ExpressCard/54 Serial Card
- 1 x Breakout Cable
- 1 x Driver CD
- 1 x Instruction Manual

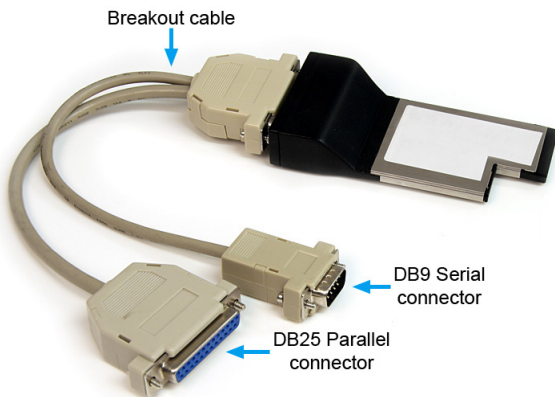
## System Requirements

- ExpressCard enabled computer system with available ExpressCard/54 slot
- Microsoft® Windows® 2000/XP/Server 2003/Vista/Server 2008 R2/7 (32/64-bit), or Apple® Mac OS® 10.4/10.5 or Linux® kernel 2.6.11 or later

## EC2S55254



## EC1S1P55254



# Installation

## Hardware Installation

Connect the included breakout cable to the card prior to installing the card. This will prevent accidental disconnection of the card from trying to connect the breakout cable after the card is installed.

**NOTE:** The connector on the EC1S1P55254 card will function as a standard DB25 parallel port without the breakout cable. Connect the breakout cable if the serial port is also required.

The ExpressCard adapter will simply slide into the ExpressCard slot on any compatible system. Push the card all the way in, until it 'clicks' and locks into place. To eject the card, simply push the card further into the slot until it clicks, and then release and it will then be automatically ejected from the slot.

Turning the computer off to insert/remove ExpressCard adapters is not necessary as they are hot-pluggable.

## Driver Installation

### Windows 2000/XP/Server 2003

1. When the Found New Hardware wizard appears on the screen, insert the Driver CD into your CD/DVD drive. If you are prompted to connect to Windows Update, please select the "No, not this time" option and click Next.
2. Select the option "Install Drivers Automatically (Recommended)" and then click the Next button.
3. Windows should now start searching for the drivers. Once this has completed, click the Finish button.

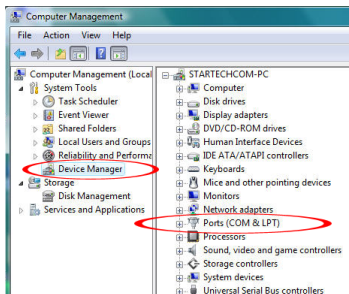
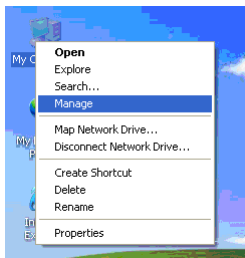
### Windows Vista/7

1. When the Found New Hardware window appears on the screen, click on the "Locate and install drivers software (recommended)" option. If prompted to search online, select the "Don't search online" option.
2. When prompted to insert the disc, insert the Driver CD that came with the card, into your CD/DVD drive and Windows will automatically proceed to search the CD.
3. If a Windows Security dialog window appears, click the "Install this driver software anyway" option to proceed.
4. Once the driver is installed, click the Close button.

## Verifying Installation

### Windows 2000/XP/Server 2003/Vista/Server 2008 R2/7

From the main desktop, right-click on “My Computer” (“Computer” in Vista/7), then select Manage. In the new Computer Management window, select Device Manager from the left window panel.



Double-click on the “Ports (COM & LPT)” option. Additional COM and/or LPT ports should be listed.

## Specifications

	EC2S55254	EC1S1P55254
<b>Supported Protocols</b>	RS232	RS232, SPP, ECP, EPP
<b>Host Interface</b>	ExpressCard 1.0a	
<b>Form Factor</b>	ExpressCard/54 (54mm)	
<b>Chipset ID</b>	Moschip MS9922CV-AA	
<b>External Connectors</b>	2 x DB9 Serial male (via breakout cable)	1 x DB9 Serial male (via breakout cable) 1 x DB25 Parallel female (via breakout cable)
<b>LEDs</b>	N/A	
<b>Maximum Data Transfer Rate</b>	128 Kbps	<b>Serial:</b> 128 Kbps <b>Parallel:</b> 1.5 Mbps
<b>Data Bits</b>	5, 6, 7, 8, 9	
<b>Stop Bits</b>	1, 1.5, 2	
<b>Parity</b>	None, Odd, Even, Mark, Space	
<b>Buffer Size</b>	256 Byte FIFO	
<b>Operating Temperature</b>	0°C ~ 70°C (32°F ~ 158°F)	
<b>Storage Temperature</b>	-40°C ~ 150°C (-40°F ~ 302°F)	
<b>Humidity</b>	0% ~ 60% RH	
<b>Dimensions</b>	115.0mm x 54.0mm x 20.0mm	
<b>Weight</b>	51g	52g
<b>Compatible Operating Systems</b>	Windows 2000/XP/Server 2003/Vista/ Server 2008 R2/7, Mac OS 10.4/10.5, Linux kernel 2.6.11 or later	



## Technical Support

StarTech.com's lifetime technical support is an integral part of our commitment to provide industry-leading solutions. If you ever need help with your product, visit [www.startech.com/support](http://www.startech.com/support) and access our comprehensive selection of online tools, documentation, and downloads.

## Warranty Information

This product is backed by a lifetime warranty.

In addition, StarTech.com warrants its products against defects in materials and workmanship for the periods noted, following the initial date of purchase. During this period, the products may be returned for repair, or replacement with equivalent products at our discretion. The warranty covers parts and labor costs only. StarTech.com does not warrant its products from defects or damages arising from misuse, abuse, alteration, or normal wear and tear.

### Limitation of Liability

In no event shall the liability of StarTech.com Ltd. and StarTech.com USA LLP (or their officers, directors, employees or agents) for any damages (whether direct or indirect, special, punitive, incidental, consequential, or otherwise), loss of profits, loss of business, or any pecuniary loss, arising out of or related to the use of the product exceed the actual price paid for the product. Some states do not allow the exclusion or limitation of incidental or consequential damages. If such laws apply, the limitations or exclusions contained in this statement may not apply to you.

# StarTech.com

Hard-to-find **made easy**

StarTech.com has been making “hard-to-find easy” since 1985, providing high quality solutions to a diverse IT and A/V customer base that spans many channels, including government, education and industrial facilities to name just a few. We offer an unmatched selection of computer parts, cables, A/V products, KVM and Server Management solutions, serving a worldwide market through our locations in the United States, Canada, the United Kingdom and Taiwan.

Visit **[www.startech.com](http://www.startech.com)** today for complete information about all our products and to access exclusive interactive tools such as the Cable Finder, Parts Finder and the KVM Reference Guide.