

Gigabit Single to Multi Mode Fiber Media Converter SC 10 km

ET91000MMSM

DE: Bedienungsanleitung - de.startech.com

FR: Guide de l'utilisateur - fr.startech.com

ES: Guía del usuario - es.startech.com

IT: Guida per l'uso - it.startech.com

NL: Gebruiksaanwijzing - nl.startech.com

PT: Guia do usuário - pt.startech.com

Packaging Contents

- 1x Gigabit SM to MM Fiber Converter SC
- 2x Mounting Brackets (w/ Screws)
- 1x Power Adapter
- 1x Instruction Manual



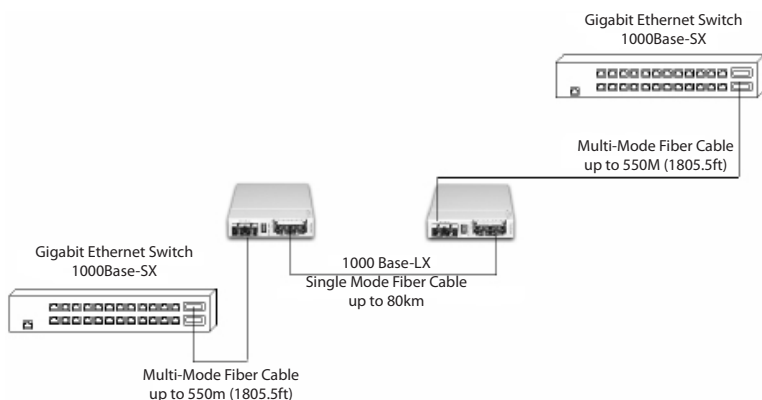
*actual product may vary from photos

System Requirements

- All necessary cables (UTP and Fiber)
- Power source

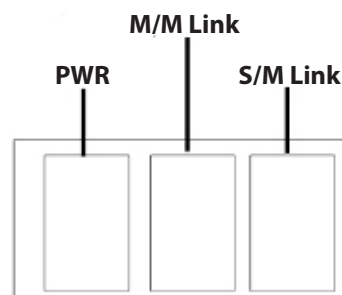
Installation

1. Connect the 12V power adapter to the port labelled DC IN on the media converter. Connect the opposite end of the adapter to an available power outlet.
2. Connect the fiber interface cable to the media converter, as illustrated in the following example:



LED Indicators

The media converter uses 3 LED indicators that display the status of single mode and multimode connections, as well as the power status of the converter. The following table illustrates what each indicator means:



LED	Function	State	Status
PWR	Power Indicator	On	Converter has power
		Off	Converter has no power
M/M Link (Multimode Link)	Mode Display	On	The Multimode link is okay
		Off	No link or the link is faulty
S/M Link (Single Mode Link)	Mode Display	On	The Single-mode mode is link is okay
		Off	No link or the link is faulty

Specifications

Cable Length	10 Km Maximum
Dimensions (LxWxH)	122mm x 85mm x 20mm (4.8 x 3.3 x 0.8 in)
Weight	0.75lbs (340g)
Wavelength	Single-mode: 1310/1550nm Multi-mode: 850nm
Sensitivity	-19dB
Output Power	-9.5dB
Supported Cable Types	9/123µm Multi-mode
Data Transfer Rate (Maximum)	1000 Mbits/sec. (Gigabit)
Certifications (Regulatory and Other)	FCC, CE, (Class A)
Power Adapter	DC 12V, 1A, center pos.

FCC Compliance Statement

This equipment has been tested and found to comply with the limits for a Class B digital device, pursuant to part 15 of the FCC Rules. These limits are designed to provide reasonable protection against harmful interference in a residential installation. This equipment generates, uses and can radiate radio frequency energy and, if not installed and used in accordance with the instructions, may cause harmful interference to radio communications. However, there is no guarantee that interference will not occur in a particular installation. If this equipment does cause harmful interference to radio or television reception, which can be determined by turning the equipment off and on, the user is encouraged to try to correct the interference by one or more of the following measures:

- Reorient or relocate the receiving antenna.
- Increase the separation between the equipment and receiver.
- Connect the equipment into an outlet on a circuit different from that to which the receiver is connected.
- Consult the dealer or an experienced radio/TV technician for help.

Use of Trademarks, Registered Trademarks, and other Protected Names and Symbols

This manual may make reference to trademarks, registered trademarks, and other protected names and/or symbols of third-party companies not related in any way to StarTech.com. Where they occur these references are for illustrative purposes only and do not represent an endorsement of a product or service by StarTech.com, or an endorsement of the product(s) to which this manual applies by the third-party company in question. Regardless of any direct acknowledgement elsewhere in the body of this document, StarTech.com hereby acknowledges that all trademarks, registered trademarks, service marks, and other protected names and/or symbols contained in this manual and related documents are the property of their respective holders.

Technical Support

StarTech.com's lifetime technical support is an integral part of our commitment to provide industry-leading solutions. If you ever need help with your product, visit www.startech.com/support and access our comprehensive selection of online tools, documentation, and downloads.

For the latest drivers/software, please visit www.startech.com/downloads

Warranty Information

This product is backed by a two year warranty.

In addition, StarTech.com warrants its products against defects in materials and workmanship for the periods noted, following the initial date of purchase. During this period, the products may be returned for repair, or replacement with equivalent products at our discretion. The warranty covers parts and labor costs only. StarTech.com does not warrant its products from defects or damages arising from misuse, abuse, alteration, or normal wear and tear.

Limitation of Liability

In no event shall the liability of StarTech.com Ltd. and StarTech.com USA LLP (or their officers, directors, employees or agents) for any damages (whether direct or indirect, special, punitive, incidental, consequential, or otherwise), loss of profits, loss of business, or any pecuniary loss, arising out of or related to the use of the product exceed the actual price paid for the product. Some states do not allow the exclusion or limitation of incidental or consequential damages. If such laws apply, the limitations or exclusions contained in this statement may not apply to you.