

## 3.5in Trayless Hot Swap SATA Mobile Rack for Dual 2.5in Hard Drives

HSB225SATBK



\*actual product may vary from photos

DE: Bedienungsanleitung - [de.startech.com](http://de.startech.com)

FR: Guide de l'utilisateur - [fr.startech.com](http://fr.startech.com)

ES: Guía del usuario - [es.startech.com](http://es.startech.com)

IT: Guida per l'uso - [it.startech.com](http://it.startech.com)

NL: Gebruiksaanwijzing - [nl.startech.com](http://nl.startech.com)

PT: Guia do usuário - [pt.startech.com](http://pt.startech.com)

For the most up-to-date information, please visit: [www.startech.com](http://www.startech.com)

## FCC Compliance Statement

This equipment has been tested and found to comply with the limits for a Class B digital device, pursuant to part 15 of the FCC Rules. These limits are designed to provide reasonable protection against harmful interference in a residential installation. This equipment generates, uses and can radiate radio frequency energy and, if not installed and used in accordance with the instructions, may cause harmful interference to radio communications. However, there is no guarantee that interference will not occur in a particular installation. If this equipment does cause harmful interference to radio or television reception, which can be determined by turning the equipment off and on, the user is encouraged to try to correct the interference by one or more of the following measures:

- Reorient or relocate the receiving antenna.
- Increase the separation between the equipment and receiver.
- Connect the equipment into an outlet on a circuit different from that to which the receiver is connected.
- Consult the dealer or an experienced radio/TV technician for help.

## Use of Trademarks, Registered Trademarks, and other Protected Names and Symbols

This manual may make reference to trademarks, registered trademarks, and other protected names and/or symbols of third-party companies not related in any way to StarTech.com. Where they occur these references are for illustrative purposes only and do not represent an endorsement of a product or service by StarTech.com, or an endorsement of the product(s) to which this manual applies by the third-party company in question. Regardless of any direct acknowledgement elsewhere in the body of this document, StarTech.com hereby acknowledges that all trademarks, registered trademarks, service marks, and other protected names and/or symbols contained in this manual and related documents are the property of their respective holders.

# Table of Contents

<b>Introduction</b> .....	1
Packaging Contents .....	1
System Requirements.....	1
<b>Front View</b> .....	2
<b>Rear View</b> .....	2
<b>Installation</b> .....	3
<b>Driver Installation</b> .....	3
<b>How to Use</b> .....	4
<b>Specifications</b> .....	6
<b>Technical Support</b> .....	7
<b>Warranty Information</b> .....	7

# Introduction

The HSB225SATBK 3.5in SATA Mobile Rack lets you install two 2.5in SATA (SATA, SATA II, SATA III-6Gbps) hard drives (HDD) or solid state drives (SSD) into an available/unused 3.5in floppy drive bay.

The mobile rack delivers quick and easy access to hard drive contents, using a convenient “no mounting required /easy eject” feature (much like a tape cartridge or floppy disk) that eliminates the need for the drives to be installed in a tray - a time-saving solution for instant drive removals and insertions as part of a system building process or integration into rackmount systems or industrial environments.

For added security, the mobile rack is equipped with locking bay doors to prevent unauthorized removal of the swappable hard drives. Also a perfect addition for operating system image deployment and any task that requires being able to access large volumes of data on the fly, the hot swap bay provides everything you need to expedite important projects while maintaining a reliable storage solution.

## Packaging Contents

- 1x Dual 2.5in Mobile Rack
- 2x SATA data cables
- 2x Keys
- 1x Screw Kit
- 1x Instruction Manual

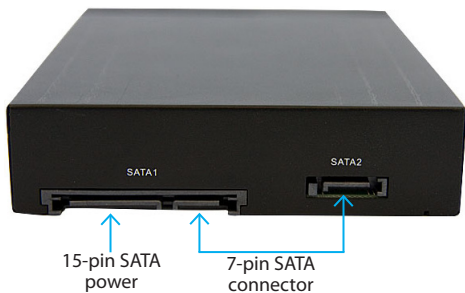
## System Requirements

- Available 3.5 inch front bay on computer case
- SATA compatible motherboard or controller with two available ports
- SATA compatible power supply with available SATA power connector

## Front View



## Rear View



# Installation

**WARNING!** Hard drives and storage enclosures require careful handling, especially when being transported. If you are not careful with your hard disk, lost data may result. Always handle your hard drive and storage device with caution. Be sure that you are properly grounded by wearing an anti-static strap when handling computer components or discharge yourself of any static electricity build-up by touching a large grounded metal surface (such as the computer case) for several seconds.

1. Make sure the computer system is powered off and unplugged from the power source before attempting any hardware installation.
2. Locate an available external 3.5" front drive bay on the computer case and install the Mobile Rack appropriately. See the documentation for your computer case for specific installation details. Mounting screws are included, if necessary.
3. Connect two 7-pin SATA cables (included) from the back of the Mobile Rack to the SATA ports on the computer motherboard or SATA controller card.
4. Connect the 15-pin SATA power cable from the computer power supply to the Mobile Rack.
5. Pull forward on the metal tabs/hinge on the front of the Mobile Rack to open the drive bay doors. Insert a 2.5" SATA hard drive into the drive bay (label facing up) and close the door behind it, making sure it latches properly.

**OPTIONAL:** Use the included keys to lock the front door to prevent accidental/unauthorized access to the hard drive(s). Turn the lock counter-clockwise to lock, and clockwise to unlock.

6. Reconnect the computer to the power source and power up the computer.  
The hard drive(s) will be treated as if connected directly to the SATA controller/motherboard.

## Driver Installation

No driver installation is required. The Mobile Rack acts as a pass-through device.

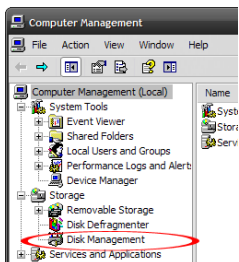
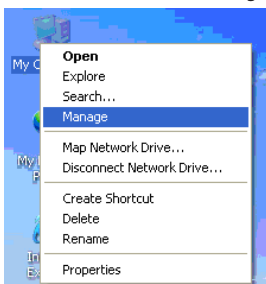
# How to Use

## Hot Swap

If the host SATA controller supports Hot-Swapping, then SATA drives can be removed or installed into the Mobile Rack without having to first shut the computer off. Refer to the documentation for the SATA controller for specific details on how to safely use its hot-swapping feature. If not supported, the computer must be shut down first, to install or remove SATA drives.

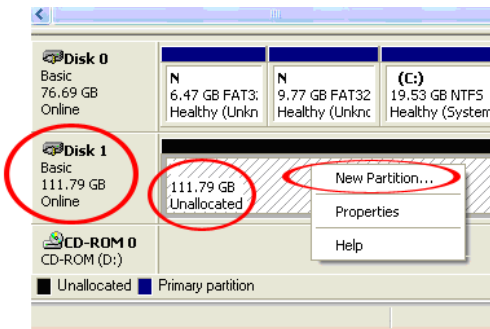
## Secondary Drive Use (Windows 2000/XP/Vista/7/8)

If you are using a brand new hard drive that does not contain any data, then you will first need to prepare the hard drive for use. From the main desktop, right-click on "My Computer" ("Computer" in Vista/7/8), then select Manage. In the new Computer Management window, select Disk Management from the left window panel.



Locate the Disk that says it is “Unallocated” (check hard drive capacity to confirm it’s the correct hard drive) and then right-click in the section that says “Unallocated” and select “New Partition”.

The New Partition Wizard will appear. Follow the instructions in the wizard to complete setting up the drive. Once complete, the Disk should show up as “Healthy” with a drive letter assigned (i.e. E:). This drive letter should now appear within My Computer.



If you are installing a hard drive that already has data on it, then after plugging it in, the drive should automatically show up with a drive letter assigned within My Computer.



# Specifications

<b>Host Interface</b>	SATA
<b>Number of Drive Bays</b>	2
<b>External Connectors</b>	2x 7-pin SATA Plug 1x 15-pin SATA Power Plug
<b>LEDs</b>	2x Drive Power/Activity
<b>Compatible Hard Drive Type</b>	2.5" SATA hard drives/solid state drives, up to 9.5mm height
<b>Insertion Rating</b>	15000 cycles
<b>Key Lock</b>	Yes
<b>Enclosure Material</b>	Steel and Plastic
<b>Operating Temperature</b>	5°C ~ 70°C (41°F ~ 158°F)
<b>Storage Temperature</b>	-40°C ~ 80°C (-40°F ~ 176°F)
<b>Humidity</b>	8%~90% RH
<b>Dimensions</b>	154.0mm x 101.0mm x 25.0mm
<b>Weight</b>	224g

# Technical Support

StarTech.com's lifetime technical support is an integral part of our commitment to provide industry-leading solutions. If you ever need help with your product, visit [www.startech.com/support](http://www.startech.com/support) and access our comprehensive selection of online tools, documentation, and downloads.

For the latest drivers/software, please visit [www.startech.com/downloads](http://www.startech.com/downloads)

## Warranty Information

This product is backed by a two year warranty.

In addition, StarTech.com warrants its products against defects in materials and workmanship for the periods noted, following the initial date of purchase. During this period, the products may be returned for repair, or replacement with equivalent products at our discretion. The warranty covers parts and labor costs only. StarTech.com does not warrant its products from defects or damages arising from misuse, abuse, alteration, or normal wear and tear.

### Limitation of Liability

In no event shall the liability of StarTech.com Ltd. and StarTech.com USA LLP (or their officers, directors, employees or agents) for any damages (whether direct or indirect, special, punitive, incidental, consequential, or otherwise), loss of profits, loss of business, or any pecuniary loss, arising out of or related to the use of the product exceed the actual price paid for the product. Some states do not allow the exclusion or limitation of incidental or consequential damages. If such laws apply, the limitations or exclusions contained in this statement may not apply to you.

Hard-to-find made easy. At StarTech.com, that isn't a slogan. It's a promise.

StarTech.com is your one-stop source for every connectivity part you need. From the latest technology to legacy products — and all the parts that bridge the old and new — we can help you find the parts that connect your solutions.

We make it easy to locate the parts, and we quickly deliver them wherever they need to go. Just talk to one of our tech advisors or visit our website. You'll be connected to the products you need in no time.

Visit [www.startech.com](http://www.startech.com) for complete information on all StarTech.com products and to access exclusive resources and time-saving tools.

*StarTech.com is an ISO 9001 Registered manufacturer of connectivity and technology parts. StarTech.com was founded in 1985 and has operations in the United States, Canada, the United Kingdom and Taiwan servicing a worldwide market.*