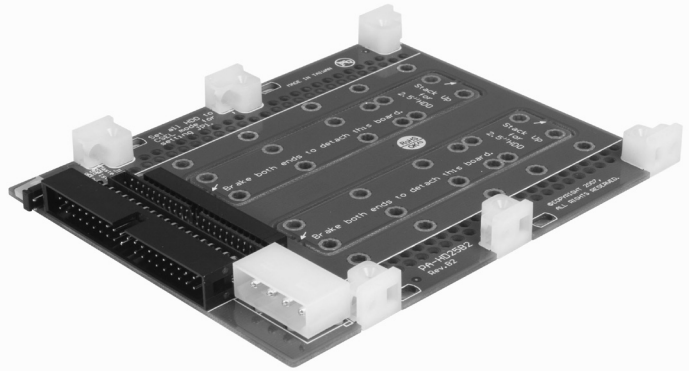


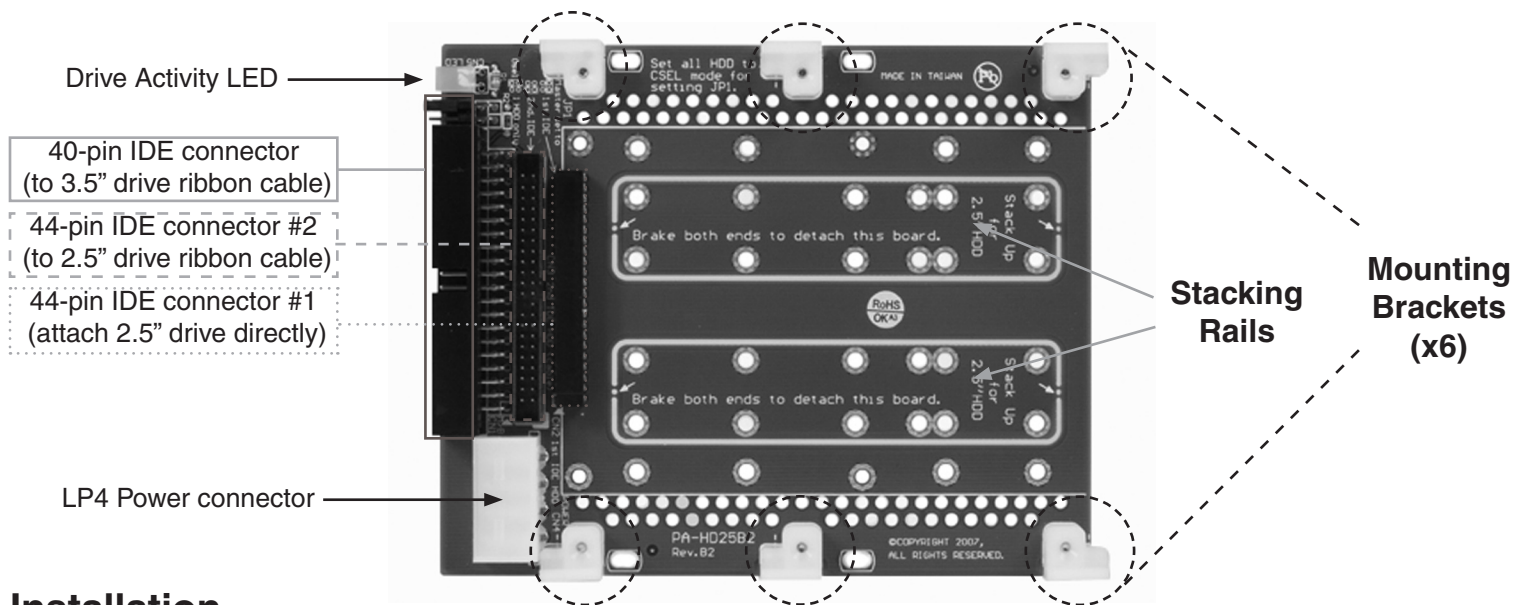
IDE35252X

3.5" Bay to Dual 2.5" IDE HDD Adapter



Features

- Holds one or two 2.5" IDE hard drives
- Occupies a single 3.5" drive slot



Installation

WARNING! Computer equipment can be severely damaged by static electricity. Be sure that you are properly grounded before opening your computer case or touching your hard drive. StarTech.com recommends that you wear an anti-static strap when installing any computer component. If an anti-static strap is unavailable, discharge yourself of any static electricity build-up by touching a large grounded metal surface (such as the computer case) for several seconds. Be sure to handle your hard drive carefully and consult your hard drive and laptop manufacturer for details on how to remove the drive.

Single Drive Installation

1. Place the 2.5" hard drive on the top (connector side) of the IDE35252X main board; gently connect the drive to the 44-pin connector (shown above as connector #1).
2. Turn the IDE35252X (with drive connected) over; fasten the drive to the board using the provided screws.
3. Once the drive has been secured to IDE35252X, fasten IDE35252X (with drive installed) to a 3.5" drive slot within the computer case, as you would a standard 3.5" drive, by threading the drive screws into the holes on the mounting brackets.
4. Connect the 40-pin IDE connector to the mainboard IDE connector, as you would a normal 3.5" drive. Similarly, attach an available LP4 power connector (from the computer power supply) to the Power

Connector on the IDE35252X main board.

Dual Drive Installation

1. Gently remove the stacking rails (shown on reverse), one at a time, from the main board.
2. Position one of the stacking rails so that the length of the rail is parallel with the lengths of the drives that will be connected to the IDE35252X main board. Fasten the mounting rail to the side of the drive using the **bottom** holes on the rail.



3. Repeat step #2 on the other side of the drive, using the bottom holes.
4. Repeat steps #2 and #3 with a second drive, using the remaining screw holes.
5. Once the drives have been secured to the stacking rails as shown above, slide the IDE connector provided by the **bottom** drive into the 44-pin connector (shown on reverse as Connector #1). Attach the top drive to Connector #2 on the main board using the 44-pin IDE cable provided
6. Fasten the IDE3525X main board to the base of the (bottom) drive, using the provided screws.
7. Attach IDE35252X (with drives installed) to a 3.5" drive slot, as you would a standard 3.5" drive, by threading the drive screws into the holes on the mounting tabs (as you normally would with the holes found on the side of a standard 3.5" drive).

Technical Support

StarTech.com's lifetime technical support is an integral part of our commitment to provide industry-leading solutions. If you ever need help with your product, visit www.startech.com/support and access our comprehensive selection of online tools, documentation, and downloads.

Warranty Information

This product is backed by a one-year warranty. In addition, StarTech.com warrants its products against defects in materials and workmanship for the periods noted, following the initial date of purchase. During this period, the products may be returned for repair, or replacement with equivalent products at our discretion. The warranty covers parts and labor costs only. StarTech.com does not warrant its products from defects or damages arising from misuse, abuse, alteration, or normal wear and tear.

Limitation of Liability

In no event shall the liability of StarTech.com Ltd. and StarTech.com USA LLP (or their officers, directors, employees or agents) for any damages (whether direct or indirect, special, punitive, incidental, consequential, or otherwise), loss of profits, loss of business, or any pecuniary loss, arising out of or related to the use of the product exceed the actual price paid for the product.

Some states do not allow the exclusion or limitation of incidental or consequential damages. If such laws apply, the limitations or exclusions contained in this statement may not apply to you.