

VGA over IP Extender - 1920 x 1200

IPUSB2VGA2



*actual product may vary from photos

DE: Bedienungsanleitung - de.startech.com

FR: Guide de l'utilisateur - fr.startech.com

ES: Guía del usuario - es.startech.com

IT: Guida per l'uso - it.startech.com

NL: Gebruiksaanwijzing - nl.startech.com

PT: Guia do usuário - pt.startech.com

For the most up-to-date information, please visit: www.startech.com

Manual Revision: 10/27/2016

FCC compliance statement

This equipment has been tested and found to comply with the limits for a Class B digital device, pursuant to part 15 of the FCC Rules. These limits are designed to provide reasonable protection against harmful interference in a residential installation. This equipment generates, uses and can radiate radio frequency energy and, if not installed and used in accordance with the instructions, may cause harmful interference to radio communications. However, there is no guarantee that interference will not occur in a particular installation. If this equipment does cause harmful interference to radio or television reception, which can be determined by turning the equipment off and on, the user is encouraged to try to correct the interference by one or more of the following measures:

- Reorient or relocate the receiving antenna.
- Increase the separation between the equipment and receiver.
- Connect the equipment into an outlet on a circuit different from that to which the receiver is connected.
- Consult the dealer or an experienced radio/TV technician for help.

Use of trademarks, registered trademarks, and other protected names and symbols

This manual may make reference to trademarks, registered trademarks, and other protected names and/or symbols of third-party companies not related in any way to StarTech.com. Where they occur these references are for illustrative purposes only and do not represent an endorsement of a product or service by StarTech.com, or an endorsement of the product(s) to which this manual applies by the third-party company in question. Regardless of any direct acknowledgement elsewhere in the body of this document, StarTech.com hereby acknowledges that all trademarks, registered trademarks, service marks, and other protected names and/or symbols contained in this manual and related documents are the property of their respective holders.

Table of Contents

Overview	1
About this product.....	1
Packaging contents.....	1
System requirements.....	1
Front view.....	2
Rear view.....	2
Software installation	3
Software installation for Windows computers.....	3
Software installation for Mac computers (USB mode only).....	4
Hardware installation	4
Hardware installation for USB mode.....	4
Hardware installation for Ethernet mode	4
Basic configuration	5
Basic configuration for Windows computers.....	5
USB mode.....	5
Ethernet mode	5
Basic configuration for Mac computers.....	6
Technical Support	7
Warranty Information.....	7

Overview

About this product

This VGA over IP extender gives you two options to interface your computer with a VGA display and 2-port USB peripheral set.

In Ethernet mode: (Windows only)

You can connect a VGA display and two USB peripherals to your network, creating a remote console that can interface with any Windows computer on your network. This mode enables you to extend or mirror the desktop of your Windows computer over long distances using your wireless or wired NIC.

In USB mode: (Windows or Mac)

You can connect your computer to a VGA display and two USB peripherals using a USB port on your computer. This mode enables you to extend or mirror the desktop of your computer over a short distance using your USB controller.

Packaging contents

- 1 x VGA over IP extender
- 1 x USB cable
- 1 x CAT5 cable
- 1 x universal power adapter (NA / EU / UK / AU)
- 1 x mounting bracket
- 1 x mounting screw kit
- 1 x rubber foot set
- 1 x quick start guide

System requirements

- VGA enabled display device with cabling
- Computer with:
 - Minimum CPU: Intel® or AMD® 2.4 GHz single core
 - Minimum RAM: 1GB
 - Microsoft® Windows® (32 or 64 bit) 10 , 8 or 8.1 , 7, Vista
 - or
 - (USB mode only)** Apple OSX El Capitan (10.11), Yosemite (10.10), Mavericks (10.9) Mountain Lion (10.8), Lion (10.7), Snow Leopard (10.6)

System requirements are subject to change. For the latest requirements, please visit www.startech.com/IPUSB2VGA2

Front view



1. VGA output port
2. USB 2.0 peripheral ports
3. Audio line in
4. Audio line out

Rear view



1. Power adapter port
2. LAN port
3. USB host port
4. Factory reset button

Software installation



To use the video adapter in USB mode, ensure the software installation steps have been completed before you connect the adapter to your computer.

Software installation for Windows computers

Note: you will need to restart your computer during the software installation process. Please be sure to save any unsaved material before you install the software.

1. Download the latest software from the StarTech.com website:
<http://www.startech.com/IPUSB2VGA2>
2. The software will be compressed in a .zip folder. Extract the contents of the folder to a location on your computer that's easy to access, such as your **Desktop** or **Downloads** folder.
3. Once the files have been extracted, open the Windows folder, and launch the **Driver-Setup(.exe)** file, to install the DisplayLink drivers.
4. Follow the on-screen prompts to complete the installation steps and when instructed to do so, restart your computer.

Note: If you're using the video adapter in USB mode only, the software installation steps have now been completed. Please proceed to **Hardware installation for USB mode**.
5. Once your computer has restarted, install the USB Server software to operate the video adapter in Ethernet mode. Reopen the **Windows** folder, followed by the **APP** folder, and launch the **Setup(.exe)** file.
6. Follow the on-screen prompts to complete the installation steps and when instructed to do so, restart your computer.
7. Once your computer has restarted, the software installation is complete.

Software installation for Mac computers (USB mode only)

Note: you may need to restart your computer during the software installation process. Please be sure to save any unsaved material before you install the software.

1. Download the latest software from the StarTech.com website:
<http://www.startech.com/IPUSB2VGA2>
2. The software will be compressed in a .zip folder. Extract the contents of the folder to a location on your computer that's easily to access, such as your **Desktop**.
3. Once the files have been extracted, open the **MAC OS** folder, followed by the folder that corresponds with your version of Mac OSX, and launch the DisplayLink installer file.
4. Follow the on-screen prompts to complete the installation steps and when instructed to do so, restart your computer.
5. Once your computer has restarted, the software installation is complete.

Hardware installation

Hardware installation for USB mode

1. Connect a VGA cable (not included) to the video adapter's VGA output port to your VGA display.
2. Connect the included power adapter to an AC outlet and to the video adapter's power adapter port.
3. Connect the included USB cable to the video adapter's USB host port, to a USB port on the your computer system.
4. Your computer will automatically detect the USB drivers for the video adapter and install them.
5. (Optional) You can connect up to two USB devices to video adapter's USB 2.0 peripheral ports.
Note: In order for your computer to recognize the USB peripherals that you've connected, the drivers for any connected USB device must be installed on your computer before you connect the USB peripherals to the video adapter.
6. Hardware installation for USB mode is now completed.

Hardware installation for Ethernet mode

1. Connect a VGA cable (not included) to the video adapter's VGA output port to your VGA display.

2. Connect the included power adapter to an AC power outlet and to the video adapter's power adapter port.
2. Connect the CAT5 cable (included) to the video adapter's LAN port and to an Ethernet port on your network, such as a router or NIC on your computer.
3. (Optional) You can connect up to two USB devices to the video adapter's USB 2.0 peripheral ports.
Note: In order for your computer to recognize the USB peripherals that you've connected, the drivers for any connected USB device must be installed on your computer before you connect the USB peripherals to the video adapter.
4. Hardware installation for Ethernet mode is now completed.

Display configuration

Display configuration for Windows computers

USB mode

1. Click the DisplayLink icon that appears in your Windows system tray after you've completed the **Hardware Installation for USB mode** steps.



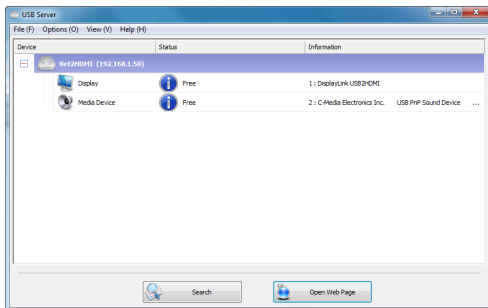
2. When the DisplayLink menu opens, click **Video Setup** to launch the Windows display settings.
3. Configure the monitor to your desired settings, including resolution and orientation.

Ethernet mode

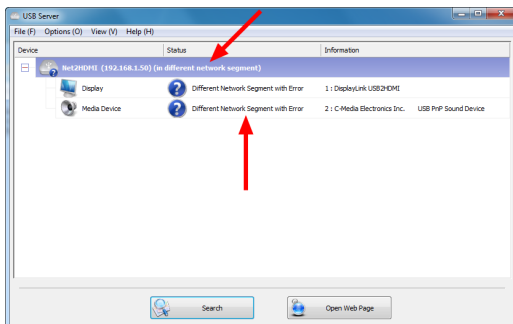
1. Double-click the **Launch USB Server** icon on your desktop, to open the USB server software.



2. The USB Server software will now display a list of connected devices. If your network supports DHCP (assigns IP addresses automatically) the video adapter will be listed below the **Devices** column along with your display below it and the status of your display will be listed as **Free** and you can continue to step 3.



If your network does not support DHCP (such as when the adapter is connected directly to your computer, without a router) your VGA adapter and display will be listed below the **Devices** column, but with a ? icon on the adapter and display, and the status for each device may be listed as **Different Network Segment with Error**.



If your network does not support DHCP the adapter and your computer will need to have different IP addresses assigned on the same subnet, in order to detect each other. The VGA adapters default IP address is **192.168.1.50**.

Change your computer's IP address

If your computer's IP address can be changed to any subnet, if for example the computer is connected directly to the VGA adapter, the easiest solution is likely assigning your computer a (static) IP address of 192.168.1.51. For information on how to do this, visit Microsoft's [Configuring a DHCP server static IP address](#) TechNet article or contact your network administrator.

Change the VGA adapter's IP address

If your computer's IP address can not be changed, if for example your entire network is on a non-DHCP network with different subnet than the VGA adapter's default IP address, you can follow the steps below to configure the VGA adapter to match your network's subnet.

- a) With the USB server application open, right-click on the main VGA video adapter device and select **Server Configuration**.
 - b) Uncheck the **Use DHCP** option and manually enter an **IP address** and **Subnet Mask** that matches your network settings.
 - c) Click **Set** to save your new settings and return to the main window.
1. Your IP extender will appear in the **Device** list, with the connected VGA display listed below it. Select the VGA display from the **Device** list, then click the **Connect Device** button.

Note: if your VGA display has a built-in audio controller, the audio controller will also be listed in the **Device** list, along with any attached USB peripheral devices. Each device must be connected using the **Connect Device** button individually, for your computer to recognize the device.

2. After you click the **Connect Device** button, the status of the device will change to locally connected, and your computer will detect the device and automatically install the required drivers.

Notes:

- To disconnect any device, select it from the **Device** list and click the **Disconnect Device** button.
 - When connecting an audio controller, the controller becomes the default audio device on your computer. Windows does not allow multiple audio devices to be used simultaneously.
3. Now that your computer has installed the drivers for your display adapter, the DisplayLink icon will appear in your Windows system tray. Close the USB Server software and click the DisplayLink icon.



4. Once you click the icon, a menu will open. From the menu click **Video Setup**, to launch the Windows display settings.
5. Use the Windows display settings to configure the monitor to your desired settings, including resolution and orientation.

Display configuration for Mac computers

USB mode only

1. After you've completed the **Hardware Installation for USB mode** steps, click the **System Preferences** menu, and then click **Display Preferences**.
2. Use the **Display Preferences** screen to configure the monitor to your desired settings, including resolution and orientation.

Display configuration for Mac computers

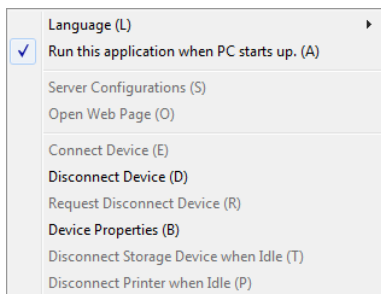
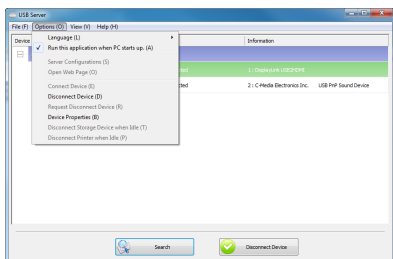
1. After you've completed the **Hardware Installation for USB mode** steps, click the **System Preferences** menu, and then click **Display Preferences**.
2. Use the **Display Preferences** screen to configure the monitor to your desired settings, including resolution and orientation.

USB Server Configuration (Windows only)

Automatic startup

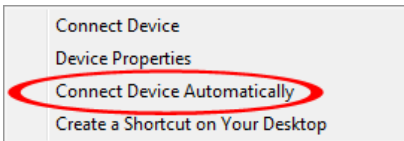
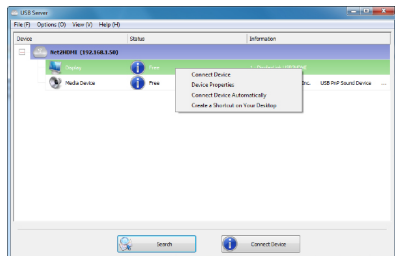
The USB Server software can be configured to automatically startup when Windows starts and also connect certain devices automatically.

1. Launch the **USB Server** software.
2. Click the **options** menu and select the **Run this application when PC Starts up** option to start the software automatically on Windows bootup is available. This will allow the software to automatically run, if the computer ever is restarted, instead of having to manually double-click the desktop icon each time.



Automatic Device Connection

Certain devices can be set to automatically connect (if available) to the host computer, when the software is running. This will allow the video and/or the audio to automatically connect, whenever the USB Server software is launched, or if unavailable originally, to automatically connect whenever the device does become available.



This can also be applied to USB devices connected to the USB Hub ports. **Right-clicking** on the device and selecting the **Connect Device Automatically** option will enable this feature for the specific USB device.

Alternatively, devices on the USB Hub ports can be set to connect automatically, based on the USB port they are plugged into on the VGA video adapter (instead of based on the specific USB device itself). This will allow for any type of USB device to be automatically connected to the host computer, so long as it is connected to the specified physical port on the VGA video adapter. This option can be accessed by right-clicking on the VGA Video adapter itself, and going into the Server Configuration.

NOTE: The software will show Port 3 and Port 4, however enabling these ports for automatic connection will have no result.

Technical Support

StarTech.com's lifetime technical support is an integral part of our commitment to provide industry-leading solutions. If you ever need help with your product, visit www.startech.com/support and access our comprehensive selection of online tools, documentation, and downloads.

For the latest drivers/software, please visit www.startech.com/downloads

Warranty Information

This product is backed by a two year warranty.

In addition, StarTech.com warrants its products against defects in materials and workmanship for the periods noted, following the initial date of purchase. During this period, the products may be returned for repair, or replacement with equivalent products at our discretion. The warranty covers parts and labor costs only. StarTech.com does not warrant its products from defects or damages arising from misuse, abuse, alteration, or normal wear and tear.

Limitation of Liability

In no event shall the liability of StarTech.com Ltd. and StarTech.com USA LLP (or their officers, directors, employees or agents) for any damages (whether direct or indirect, special, punitive, incidental, consequential, or otherwise), loss of profits, loss of business, or any pecuniary loss, arising out of or related to the use of the product exceed the actual price paid for the product. Some states do not allow the exclusion or limitation of incidental or consequential damages. If such laws apply, the limitations or exclusions contained in this statement may not apply to you.

StarTech.com

Hard-to-find made easy®

Hard-to-find made easy. At StarTech.com, that isn't a slogan. It's a promise.

StarTech.com is your one-stop source for every connectivity part you need. From the latest technology to legacy products — and all the parts that bridge the old and new — we can help you find the parts that connect your solutions.

We make it easy to locate the parts, and we quickly deliver them wherever they need to go. Just talk to one of our tech advisors or visit our website. You'll be connected to the products you need in no time.

Visit www.startech.com for complete information on all StarTech.com products and to access exclusive resources and time-saving tools.

StarTech.com is an ISO 9001 Registered manufacturer of connectivity and technology parts. StarTech.com was founded in 1985 and has operations in the United States, Canada, the United Kingdom and Taiwan servicing a worldwide market.