

A/V Module with HDMI over CAT5/CAT6 for BOX4MODULE and BEZ4MOD



Actual product may vary from photos

User Manual

SKU#: MOD4AVHDBT

Compliance Statements

FCC Compliance Statement

This equipment has been tested and found to comply with the limits for a Class B digital device, pursuant to part 15 of the FCC Rules. These limits are designed to provide reasonable protection against harmful interference in a residential installation. This equipment generates, uses and can radiate radio frequency energy and, if not installed and used in accordance with the instructions, may cause harmful interference to radio communications. However, there is no guarantee that interference will not occur in a particular installation. If this equipment does cause harmful interference to radio or television reception, which can be determined by turning the equipment off and on, the user is encouraged to try to correct the interference by one or more of the following measures:

- Reorient or relocate the receiving antenna
- Increase the separation between the equipment and receiver
- Connect the equipment into an outlet on a circuit different from that to which the receiver is connected
- Consult the dealer or an experienced radio/TV technician for help

Use of Trademarks, Registered Trademarks, and other Protected Names and Symbols

This manual may make reference to trademarks, registered trademarks, and other protected names and/or symbols of third-party companies not related in any way to StarTech.com. Where they occur these references are for illustrative purposes only and do not represent an endorsement of a product or service by StarTech.com, or an endorsement of the product(s) to which this manual applies by the third-party company in question. Regardless of any direct acknowledgement elsewhere in the body of this document, StarTech.com hereby acknowledges that all trademarks, registered trademarks, service marks, and other protected names and/or symbols contained in this manual and related documents are the property of their respective holders.

Industry Canada Statement

This Class B digital apparatus complies with Canadian ICES-003.

Cet appareil numérique de la classe [B] est conforme à la norme NMB-003 du Canada.

CAN ICES-3 (B)/NMB-3(B)

This device complies with Industry Canada licence-exempt RSS standard(s).
Operation is subject to the following two conditions:

(1) This device may not cause interference, and (2) This device must accept any interference, including interference that may cause undesired operation of the device.

Safety Statements

Safety Measures

- Wiring terminations should not be made with the product and/or electric lines under power.
- Product installation and/or mounting should be completed by a certified professional as per the local safety and building code guidelines.
- Cables (including power and charging cables) should be placed and routed to avoid creating electric, tripping or safety hazards.

Mesures de sécurité

- Les terminaisons de câblage ne doivent pas être effectuées lorsque le produit et/ou les câbles électriques sont sous tension.
- L'installation et/ou le montage du produit doit être réalisé par un professionnel certifié et dans le respect des normes locales et du code de construction local.
- Les câbles (y compris les câbles d'alimentation et de chargement) doivent être placés et acheminés de façon à éviter tout risque électrique, de chute ou de sécurité

安全対策

- 電源が入っている状態の製品または電線の終端処理を行わないでください。
- 製品の設置やマウントは、使用地域の安全ガイドラインおよび建築基準に従い、有資格の専門業者が行うようにしてください。
- ケーブル(電源ケーブルと充電ケーブルを含む)は、適切な配置と引き回しを行い、電気障害やつまづきの危険性など、安全上のリスクを回避するようにしてください。

Misure di sicurezza

- I terminali dei fili elettrici non devono essere realizzate con il prodotto e/o le linee elettriche sotto tensione.
- L'installazione e/o il montaggio dei prodotti devono essere eseguiti da un tecnico professionale certificato che conosca le linee guida locali sulle norme edilizie e sulla sicurezza.
- I cavi (inclusi i cavi di alimentazione e di ricarica) devono essere posizionati e stesi in modo da evitare pericoli di inciampo, rischi di scosse elettriche o pericoli per la sicurezza.

Säkerhetsåtgärder

- Montering av kabelavslutningar får inte göras när produkten och/eller elledningarna är strömförda.
- Installation och/eller montering får endast göras av behöriga yrkespersoner och enligt gällande lokala förordningar för säkerhet och byggnormer.
- Kablar (inklusive elkablar och laddningskablar) ska dras och placeras på så sätt att risk för snubblingsolyckor och andra olyckor kan undvikas.

Warning Statements

Make sure to assemble this product according to the instructions. Failure to do so might result in personal injury or property damage.

Never use this product if parts are missing or damaged.

Table of Contents

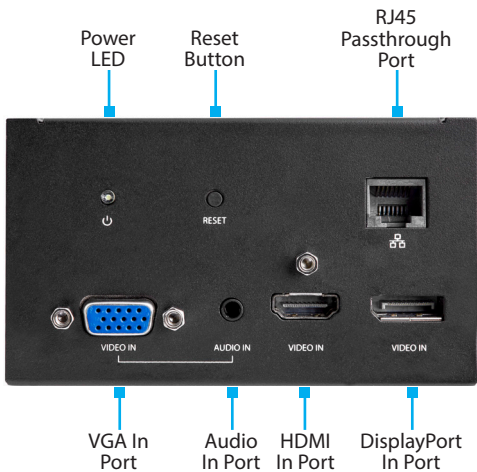
Compliance Statements	i
Safety Statements	iii
Warning Statements	iv
Product Diagram	1
Top View	1
Bottom View.....	2
Side View	3
Product Information	4
Package Contents	4
Requirements	4
Installation	5
Mounting	5
Powering the Module.....	6
Connecting Devices to the Bottom of the Module	7
RJ45 Passthrough Port	7
CAT5e/6 Video Port.....	7
HDMI Out Port.....	8
Audio Out Port	8
DC 5V 2A Port	8
DisplayPort In Ports	8
HDMI In Port.....	9
Audio In Port.....	9
VGA In Port	9

Connecting Devices to the Top of the Module	10
RJ45 Passthrough Port	10
VGA In Port	10
Audio In Port.....	10
HDMI In Port.....	11
DisplayPort In Port.....	11
Operation	11
LED Indicators.....	11
Reset Button.....	12
Automatic Video Switching	12
Dual Display Output.....	12
Configuration.....	13
Configuring a Display	13
Display Preferences	14
Maximum Resolution Chart.....	15
Connectivity Diagram	16

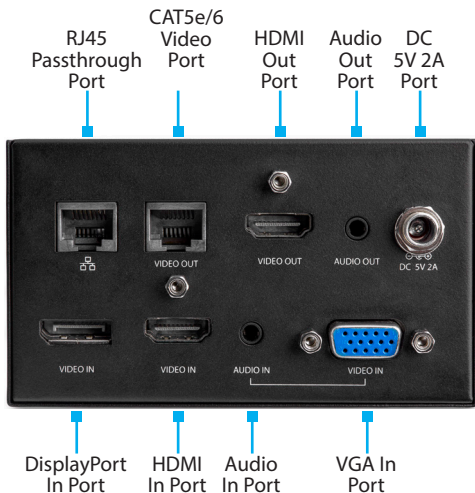
Product Diagram

Actual product may vary from photos.

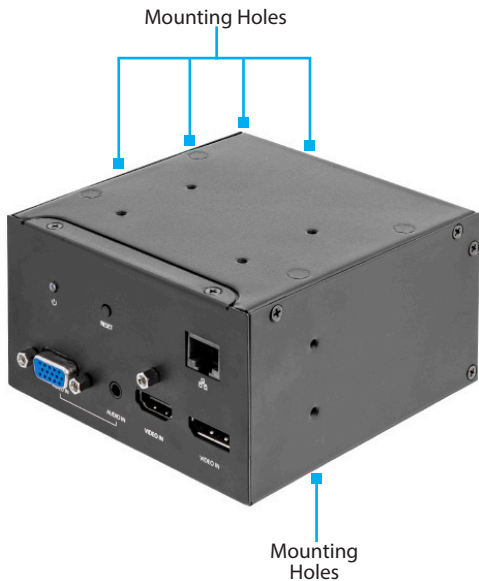
Top View



Bottom View



Side View



Product Information

Package Contents

- A/V Module x 1
- Universal Power Adapter x 1
- Power Clips (NA, EU, UK) x 3
- Mounting Bracket x 1
- Mounting Bracket Screws (M5x20 mm) x 4
- Module Screws(#6-32 x 3/16") x 8
- Quick-Start Guide x 1

Requirements

For the latest requirements, please visit www.startech.com/MOD4AVHDBT.

Installation:

- Mounting Bracket x 1
- Mounting Bracket Screws (M5x20 mm) x 4
- Module Screws (#6-32 x 3/16") x 4
- Writing Utensil x 1
- Phillips Head Screwdriver x 1

Laptop:

- HDMI, DisplayPort, or VGA Video Output Devices

Display:

- HDMI Enabled Display Device (up to 4K@30Hz) x 1
- HDMI Cable x 1

Devices:

- Network Device x 1
- CAT5e/6 Cables x 3
- Audio Input Devices x 2
- Audio Output Device x 1

Power

- Power Source (e.g. Wall Outlet, Power Bar, etc.) x 1

Installation

Warning: Test the functionality of MOD4AVHDBT with your equipment to ensure compatibility before installation.

Note: StarTech.com is not responsible for any damages related to the installation of this product.

See the Installation section in the **Modular Table Box** (BOX4MODULE) or **Single-Module Table Box** (BEZ4MOD) **User Manual** for instructions on how to install a **Module** (found at www.startech.com/BEZ4MOD or www.startech.com/BOX4MODULE - **Table Boxes** are sold separately).

Mounting

Using the Included Mounting Bracket

Note: Before mounting the **Module**, consider the desired orientation of the **Ports** (front and rear).

1. Align the **Mounting Bracket** with four **Mounting Holes** on the **Module**.

Note: There are four **Mounting Holes** on each side of the **Module**, which allows you to mount the **Module** in one of two different positions.

2. Insert the **Module Screws** (x4) through the **Mounting Bracket** and into the **Mounting Holes**.
3. Tighten the **Module Screws** using a **Phillips Head Screwdriver**. Do not over-tighten the **Module Screws**.
4. Before installing the **Mounting Bracket** on or under the **Mounting Surface**, measure and position the **Mounting Bracket** in the desired location. The **Module** can be mounted on a vertical or horizontal **Mounting Surface**.
5. (Optional) Depending on the **Mounting Surface** you are using to install the product, you may need to drill pilot holes prior to installing the **Mounting Bracket Screws** into the **Mounting Surface**.
6. Mark the location of the **Mounting Holes** using a **Writing Utensil**. These marks can be used as a guide to indicate where the **Mounting Bracket Screws** will be installed in the surface.
7. Install the **Mounting Bracket Screws** (x4) through the **Mounting Bracket** and into the **Mounting Surface**, using a **Phillips Head Screwdriver**. Do not over-tighten the **Mounting Bracket Screws**.

Warning: To prevent the **Mounting Bracket Screws** from penetrating the opposite side of the **Mounting Surface**, be conscious of the length of the **Mounting Bracket Screws** compared to the depth of the **Mounting Surface**.

Powering the Module

1. On the bottom of the **A/V Module**, connect the **Universal Power Adapter** to the **DC 5V 2A Port**.

2. Tighten the **Lock Screw** on the **Universal Power Adapter's Barrel Connector**, to prevent the cable from accidentally disconnecting from the **A/V Module**.
3. Connect the other end of the **Universal Power Adapter** to an appropriate **Power Source**.

Connecting Devices to the Bottom of the Module

Tip: Devices being used in your boardroom can be connected to the bottom of MOD4AVHDBT, to reduce table top cable clutter.

RJ45 Passthrough Port

The **RJ45 Passthrough Port** is used to connect a **Network Device** to the **A/V Module**.

1. Connect a **CAT5e/6 Cable's RJ45 Connector** to the **RJ45 Passthrough Port** on the **A/V Module**.
2. Connect the other **RJ45 Connector** on the **CAT5e/6 Cable** to an **RJ45 Port** on a **Network Device**.

CAT5e/6 Video Port

Extend Video and Audio
(STHDBTRX Receiver is Sold Separately)

The **CAT5e/6 Video Port** is used to connect a **Video Display Device** to the **A/V Module**. The **CAT5e/6 Video Port** can also be used to connect an **HDMI Over CAT5e/6 Receiver**.

1. Connect a **CAT5e/6 Cable's RJ45 Connector** to the **CAT5e/6 Video Port** on the **A/V Module**.

2. Connect the other **RJ45 Connector** on the **CAT5e/6 Cable** to an **RJ45 Port** on a **Video Source Device** or an **HDMI Over CAT5e/6 Receiver**.

HDMI Out Port

The **HDMI Out Port** is used to connect an **HDMI Enabled Display Device** to the **A/V Module**.

1. Connect an **HDMI Cable** to the **HDMI Out Port** on the **AV Module**.
2. Connect the other end of the **HDMI Cable** to an **HDMI Port** on your **HDMI Enabled Display Device**.

Audio Out Port

The **Audio Out Port** is used to connect an **Audio Device** (e.g. Headphones, Speakers, etc.) to the **A/V Module**.

1. Connect a **3.5 mm Audio Cable** to the **Audio Out Port** on the **A/V Module**.
2. If connecting speakers, connect the other end of the **3.5 mm Audio Cable** to the **Audio In Port** on the **Audio Device**.

DC 5V 2A Port

See [Powering the Module](#).

DisplayPort In Ports

The **DisplayPort Ports** enable you to connect **DisplayPort Video Source Devices** to the **A/V Module** for use with the connected **Host Computer**.

1. Connect a **DisplayPort Cable** to the **DisplayPort Port** on the **A/V Module**.
2. Connect the other end of the **DisplayPort Cable** to a DisplayPort port on the **DisplayPort Video Source Devices**.

HDMI In Port

The **HDMI In Port** is used to connect a **Video Source Device** to the **A/V Module**.

1. Connect an **HDMI Cable** to the **HDMI In Port** on the **A/V Module**.
2. Connect the other end of the **HDMI Cable** to an HDMI port on a **Source Device**.

Audio In Port

The **Audio In Port** is used to connect an **Audio Source Device** to the **A/V Module**.

1. Connect a **3.5 mm Audio Cable** to the **Audio In Port** on the **A/V Module**.
2. Connect the other end of the **3.5 mm Audio Cable** to the **Audio Out Port** on the **Audio Source Device**.

VGA In Port

The **VGA In Port** is used to connect a **Video Source Device** to the **A/V Module**.

1. Connect a **VGA Cable** to the **VGA In Port** on the **A/V Module**.
2. Connect the other end of the **VGA Cable** to a **VGA Output Port** on the **Video Source Device**.

Connecting Devices to the Top of the Module

RJ45 Passthrough Port

The **RJ45 Passthrough Port** is used to connect a **Network Device** to the **A/V Module**.

1. Connect a **CAT5e/6 Cable's RJ45 Connector** to the **RJ45 Passthrough Port** on the **A/V Module**.
2. Connect the other **RJ45 Connector** on the **CAT5e/6 Cable** to an **RJ45 Port** on a **Network Device**.

VGA In Port

The **VGA In Port** is used to connect a **Video Source Device** to the **A/V Module**.

1. Connect a **VGA Cable** to the **VGA In Port** on the **A/V Module**.
2. Connect the other end of the **VGA Cable** to a **VGA Output Port** on the **Video Source Device**.

Audio In Port

The **Audio In Port** is used to connect an **Audio Source Device** to the **A/V Module**.

1. Connect a **3.5 mm Audio Cable** to the **Audio In Port** on the **A/V Module**.
2. Connect the other end of the **3.5 mm Audio Cable** to the **Audio Out Port** on the **Audio Source Device**.

HDMI In Port

The **HDMI In Port** is used to connect a **Source Device** to the **A/V Module**.

1. Connect an **HDMI Cable** to the **HDMI In Port** on the **A/V Module**.
2. Connect the other end of the **HDMI Cable** to an HDMI port on a **Source Device**.

DisplayPort In Port

The **DisplayPort Port** enables you to connect a **Display Device** to the **A/V Module** for use with the connected **Host Computer**.

1. Connect a **DisplayPort Cable** to the **DisplayPort Port** on the **A/V Module**.
2. Connect the other end of the **DisplayPort Cable** to a DisplayPort port on the **Video Source Device**.

Operation

LED Indicators

Power

Solid LED (White)

- Indicates that the **A/V Module** is active (the **Universal Power Adapter** is correctly connected to an **AC Electrical Outlet**).

LED Off

- Indicates that the **Universal Power Adapter** is not correctly connected to an **AC Electrical Outlet** or the **A/V Module** is not receiving power from the **AC Electrical Outlet**.

Reset Button

Press and release the **Reset Button** in to reset the EDID settings.

Automatic Video Switching

Automatic video switching allows you to connect an **HDMI, DP or VGA Video Source** to an **HDMI Display or Projector** without the hassle of menu and input selections by automatically switching to the most recently connected or powered-on **Source**.

Dual Display Output

The **CAT5e/6 Video Port** and **HDMI Out Port** can be used to simultaneously output A/V content to two different **Displays**.

Configuration

Configuring a Display

Video output capabilities are dependent on the video card and hardware specifications of the connected **Host Computer** and **Displays**.

***Note:** Navigating to the **Settings** screen will vary depending on the operating system (OS) or operating system version running on the host laptop.*

Windows:

1. Right-click on the **Desktop** and select **Screen Resolution** or **Display Settings** (depending on the OS version) from the pop-up menu.
2. Adjust the **Display Order, Screen Resolution, Orientation** and **Display Mode** as needed.

macOS:

1. Click the **Apple Icon** and select **System Preferences**.
2. Click **Displays** to open the **Display Preferences** screen.
3. On the **Display Preferences** screen, you can configure your system's display settings.

Display Preferences

Orientation:

- **Landscape:** Sets the Display in a horizontal orientation.
- **Portrait:** Sets the Display in a vertical orientation.

Multiple Displays:

- **Extend desktop to this display:** Extends your desktop area across multiple Displays, enabling you to move applications from one Display to the other.
- **Duplicate desktop on:** Duplicates the desktop marked as the main Display onto the selected Display.
- **Disconnect this display:** Disconnects the selected Display.

Make this my main display:

- Select this check box to mark the current Display as the main or primary Display. When using the other Display types, the main Display will either be extended (Extend desktop to this display) or Duplicated (Duplicate this display).

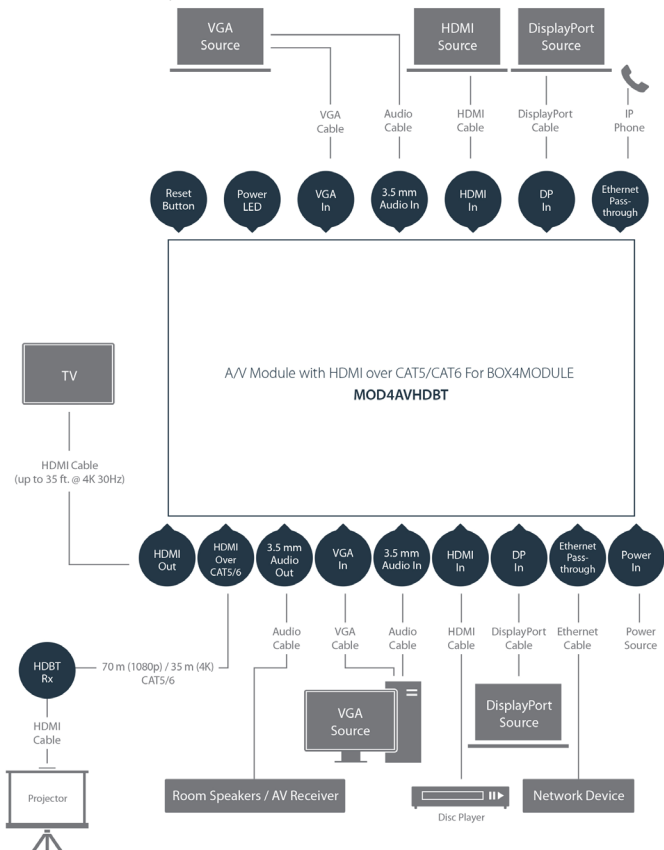
Resolution:

- The number of pixels rendered on the Display measure as width x height (e.g. 1920 x 1080).

Maximum Resolution Chart

Input Port	HDMI Output Resolution	CAT5e/6 Video Output Resolution
Top HDMI In Port	Up to 3840 x 2160 30Hz + 7.1/5.1/2 channel audio	Up to 3840 x 2160 30Hz with 35 m extension / 1920 X 1080 60Hz with 70 m extension + 7.1/5.1/2 channel audio
Top DisplayPort In Port	Up to 3840 x 2160 30Hz + 7.1/5.1/2 channel audio	Up to 3840 x 2160 30Hz with 35 m extension / 1920 X 1080 60Hz with 70 m extension + 7.1/5.1/2 channel audio
Top VGA In and Audio In Ports	1920 X 1080 60Hz + 2 channel audio	1920 X 1080 60Hz with 70 m extension + 2 channel audio
Bottom HDMI In Port	Up to 3840 x 2160 30Hz + 7.1/5.1/2 channel audio	Up to 3840 x 2160 30Hz with 35 m extension / 1920 X 1080 60Hz with 70 m extension + 7.1/5.1/2 channel audio
Bottom DisplayPort In Port	Up to 3840 x 2160 30Hz + 7.1/5.1/2 channel audio	Up to 3840 x 2160 30Hz with 35 m extension / 1920 X 1080 60Hz with 70 m extension + 7.1/5.1/2 channel audio
Bottom VGA In and Audio In Ports	1920 X 1080 60Hz + 2 channel audio	1920 X 1080 60Hz with 70 m extension + 2 channel audio

Connectivity Diagram



To view manuals, videos, drivers, downloads, technical drawings, and more visit www.startech.com/support

Warranty Information

This product is backed by a two-year warranty.

For further information on product warranty terms and conditions, please refer to www.startech.com/warranty.

Limitation of Liability

In no event shall the liability of StarTech.com Ltd. and StarTech.com USA LLP (or their officers, directors, employees or agents) for any damages (whether direct or indirect, special, punitive, incidental, consequential, or otherwise), loss of profits, loss of business, or any pecuniary loss, arising out of or related to the use of the product exceed the actual price paid for the product.

Some states do not allow the exclusion or limitation of incidental or consequential damages. If such laws apply, the limitations or exclusions contained in this statement may not apply to you.

Hard-to-find made easy. At StarTech.com, that isn't a slogan. It's a promise.

StarTech.com is your one-stop source for every connectivity part you need. From the latest technology to legacy products — and all the parts that bridge the old and new — we can help you find the parts that connect your solutions.

We make it easy to locate the parts, and we quickly deliver them wherever they need to go. Just talk to one of our tech advisors or visit our website. You'll be connected to the products you need in no time.

Visit www.startech.com for complete information on all StarTech.com products and to access exclusive resources and time-saving tools.

StarTech.com is an ISO 9001 Registered manufacturer of connectivity and technology parts. StarTech.com was founded in 1985 and has operations in the United States, Canada, the United Kingdom and Taiwan servicing a worldwide market.

Reviews

Share your experiences using StarTech.com products, including product applications and setup, what you love about the products, and areas for improvement.

StarTech.com Ltd.

45 Artisans Cres.
London, Ontario
N5V 5E9
Canada

FR: fr.startech.com

DE: de.startech.com

StarTech.com LLP

2500 Creekside Pkwy.
Lockbourne, Ohio
43137
U.S.A.

ES: es.startech.com

NL: nl.startech.com

StarTech.com Ltd.

Unit B, Pinnacle
15 Gowerton Rd.,
Brackmills
Northampton
NN4 7BW
United Kingdom

IT: it.startech.com

JP: jp.startech.com