

## 2 Port PCI to IDE Controller Card

PCIIDE2



\*actual product may vary from photos

DE: Bedienungsanleitung - [de.startech.com](http://de.startech.com)

FR: Guide de l'utilisateur - [fr.startech.com](http://fr.startech.com)

ES: Guía del usuario - [es.startech.com](http://es.startech.com)

IT: Guida per l'uso - [it.startech.com](http://it.startech.com)

NL: Gebruiksaanwijzing - [nl.startech.com](http://nl.startech.com)

PT: Guia do usuário - [pt.startech.com](http://pt.startech.com)

## FCC Compliance Statement

This equipment has been tested and found to comply with the limits for a Class B digital device, pursuant to part 15 of the FCC Rules. These limits are designed to provide reasonable protection against harmful interference in a residential installation. This equipment generates, uses and can radiate radio frequency energy and, if not installed and used in accordance with the instructions, may cause harmful interference to radio communications. However, there is no guarantee that interference will not occur in a particular installation. If this equipment does cause harmful interference to radio or television reception, which can be determined by turning the equipment off and on, the user is encouraged to try to correct the interference by one or more of the following measures:

Reorient or relocate the receiving antenna.

Increase the separation between the equipment and receiver.

Connect the equipment into an outlet on a circuit different from that to which the receiver is connected.

Consult the dealer or an experienced radio/TV technician for help.

## Use of Trademarks, Registered Trademarks, and other Protected Names and Symbols

This manual may make reference to trademarks, registered trademarks, and other protected names and/or symbols of third-party companies not related in any way to StarTech.com. Where they occur these references are for illustrative purposes only and do not represent an endorsement of a product or service by StarTech.com, or an endorsement of the product(s) to which this manual applies by the third-party company in question. Regardless of any direct acknowledgement elsewhere in the body of this document, StarTech.com hereby acknowledges that all trademarks, registered trademarks, service marks, and other protected names and/or symbols contained in this manual and related documents are the property of their respective holders.

# Table of Contents

Introduction.....	1
Packaging Contents .....	1
System Requirements .....	1
Installation.....	2
Hardware Installation.....	2
Driver Installation .....	2
Troubleshooting.....	4
Specifications.....	5
Technical Support.....	6
Warranty Information.....	6

# Introduction

This 2 Port IDE (Ultra ATA/133) Controller Card can be installed in a PCI slot, to add more IDE storage capability to your PC.

Providing two IDE drive channels with support for two drives per channel and data transfer rates of up to 133 MBps, this adapter card can act as the primary boot device and replace built-in IDE ports, or provide 2 additional high-speed ports to the system. Designed to perform with high-speed IDE/133 drives, the adapter card also supports 100 MBps hard drives, 66 MBps hard drives, 33 MBps hard drives, CD drives, and other ATA peripherals.

## Packaging Contents

- 1 x PCI to IDE Controller Card
- 1 x 40-pin, 80-wire IDE Data Cable
- 1 x Driver CD
- 1 x Instruction Manual

## System Requirements

- Available PCI expansion slot
- Microsoft® Windows® 2000/ XP(32/64-bit)/ Server 2003(32/64-bit)/ Vista(32/64-bit)/ 7(32/64-bit)/ Server 2008 R2, and Linux®

# Installation

## Hardware Installation

1. Turn your computer off and any peripherals connected to the computer (i.e. Printers, external hard drives, etc.). Unplug the power cable from the rear of the power supply on the back of the computer and disconnect all peripheral devices.
2. Remove the cover from the computer case. Refer to documentation for your computer system for details.
3. Locate an open PCI or PCI-X slot and remove the metal cover plate on the rear of the computer case.
4. Gently insert the card into the open PCI or PCI-X slot and fasten the card's bracket to the rear of the case.
5. Place the cover back onto the computer case.
6. Insert the power cable into the socket on the power supply and reconnect all other connectors removed in Step 1.

## Driver Installation

### Windows 2000/ XP

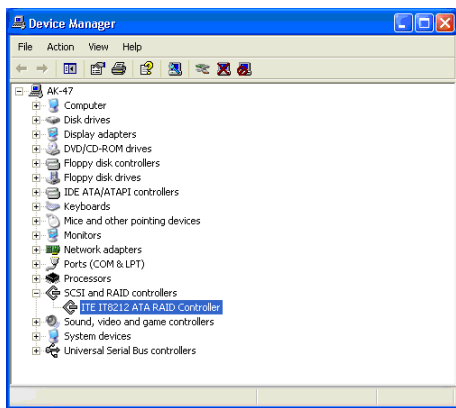
1. Power on the host computer, and ensure that Windows is fully booted (desktop is visible)
2. Windows will detect that an ATA PCI Controller has been connected, and will launch the Add New Hardware Wizard. Select Search for a suitable driver for my device (recommended), and click Next to continue setup.



\*screenshots may vary. For reference only.

3. Insert the Driver CD into the CD/DVD drive, and select “Install from a list or specific location” and click “Next” to continue setup:
4. In the dialog box provided, type D:\WIN2K\_XP to indicate the proper file location. Click on Next to continue setup.
5. When Windows indicates that the correct driver has been located, click on Next to continue setup.
6. When you are notified that the Found New Hardware Wizard has finished installing the drivers for ITE IT8211 ATA PCI, click Finish to continue, and restart the computer for the installation to take effect:
7. Once the computer has rebooted, you may want to verify that installation has successfully completed. To do so, right-click on My Computer and select Manage. On the left side of the window that opens, click on Device Manager. Click on the [+] sign next to SCSI and RAID Controllers, where you should notice ITE IT8211 ATA Controller listed, indicating that installation was successful.

If there is a ? or ! symbol next to the ITE IT8211 ATA Controller, it indicates that the driver has not installed correctly. If this is the case, please remove the device and reinstall.



# Troubleshooting

**Q:** When the computer is powered on, no video appears on the screen or the floppy drive light stays on and the drive doesn't work.

**A:** The cable may be plugged in backwards. Make sure the cable is plugged in correctly. This is done by examining the cable to confirm the red stripe is aligned with Pin 1 on both ends.

**Q:** When I boot up my computer, I receive an "HDD Controller failure" message.

**A:** 1) First, make sure the port is enabled.

2) If the port is enabled, check that all cables are connected properly, including the power cable.

3) Verify that no equivalent drive controller is active in the BIOS.

# Specifications

<b>Host Interface</b>	32-bit PCI v2.2 (3.3V/ 5V)
<b>Connectors</b>	2 x 40-pin IDC (IDE)
<b>Chipset</b>	ITE IT8211
<b>Maximum Number of IDE/EIDE Devices</b>	4
<b>Compatible Specification</b>	ATA/ATAPI-6
<b>Supported Modes</b>	PIO: 0, 1, 2, 3, 4 DMA/UDMA: 0, 1, 2, 3, 4, 5, 6
<b>Maximum Data Transfer Rate</b>	133 Mbps
<b>Compatible Operating Systems</b>	Windows 2000/ XP(32/64-bit)/ Server 2003(32/64-bit)/ Vista(32/64-bit)/ 7(32/64-bit)/ Server 2008 R2, and Linux



# Technical Support

StarTech.com's lifetime technical support is an integral part of our commitment to provide industry-leading solutions. If you ever need help with your product, visit [www.startech.com/support](http://www.startech.com/support) and access our comprehensive selection of online tools, documentation, and downloads.

## Warranty Information

This product is backed by a lifetime warranty.

In addition, StarTech.com warrants its products against defects in materials and workmanship for the periods noted, following the initial date of purchase. During this period, the products may be returned for repair, or replacement with equivalent products at our discretion. The warranty covers parts and labor costs only. StarTech.com does not warrant its products from defects or damages arising from misuse, abuse, alteration, or normal wear and tear.

### Limitation of Liability

In no event shall the liability of StarTech.com Ltd. and StarTech.com USA LLP (or their officers, directors, employees or agents) for any damages (whether direct or indirect, special, punitive, incidental, consequential, or otherwise), loss of profits, loss of business, or any pecuniary loss, arising out of or related to the use of the product exceed the actual price paid for the product. Some states do not allow the exclusion or limitation of incidental or consequential damages. If such laws apply, the limitations or exclusions contained in this statement may not apply to you.

# StarTech.com

Hard-to-find **made easy**®

Hard-to-find made easy. At StarTech.com, that isn't a slogan. It's a promise.

StarTech.com is your one-stop source for every connectivity part you need. From the latest technology to legacy products — and all the parts that bridge the old and new — we can help you find the parts that connect your solutions.

We make it easy to locate the parts, and we quickly deliver them wherever they need to go. Just talk to one of our tech advisors or visit our website. You'll be connected to the products you need in no time.

Visit **[www.startech.com](http://www.startech.com)** for complete information on all StarTech.com products and to access exclusive resources and time-saving tools.

*StarTech.com is an ISO 9001 Registered manufacturer of connectivity and technology parts. StarTech.com was founded in 1985 and has operations in the United States, Canada, the United Kingdom and Taiwan servicing a worldwide market.*