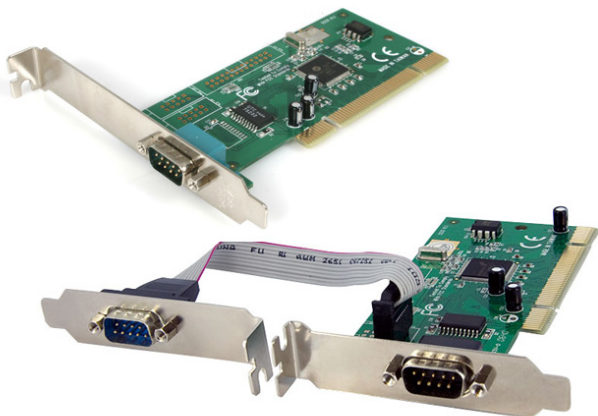


## 1 and 2 Port PCI RS232 Serial Adapter Card w/ 16950 UART - Dual Voltage

PCI1S950DV

PCI2S950DV



\*actual product may vary from photos

DE: Bedienungsanleitung - [de.startech.com](http://de.startech.com)

FR: Guide de l'utilisateur - [fr.startech.com](http://fr.startech.com)

ES: Guía del usuario - [es.startech.com](http://es.startech.com)

IT: Guida per l'uso - [it.startech.com](http://it.startech.com)

NL: Gebruiksaanwijzing - [nl.startech.com](http://nl.startech.com)

PT: Guia do usuário - [pt.startech.com](http://pt.startech.com)

## FCC Compliance Statement

This equipment has been tested and found to comply with the limits for a Class B digital device, pursuant to part 15 of the FCC Rules. These limits are designed to provide reasonable protection against harmful interference in a residential installation. This equipment generates, uses and can radiate radio frequency energy and, if not installed and used in accordance with the instructions, may cause harmful interference to radio communications. However, there is no guarantee that interference will not occur in a particular installation. If this equipment does cause harmful interference to radio or television reception, which can be determined by turning the equipment off and on, the user is encouraged to try to correct the interference by one or more of the following measures:

Reorient or relocate the receiving antenna.

Increase the separation between the equipment and receiver.

Connect the equipment into an outlet on a circuit different from that to which the receiver is connected.

Consult the dealer or an experienced radio/TV technician for help.

## Use of Trademarks, Registered Trademarks, and other Protected Names and Symbols

This manual may make reference to trademarks, registered trademarks, and other protected names and/or symbols of third-party companies not related in any way to StarTech.com. Where they occur these references are for illustrative purposes only and do not represent an endorsement of a product or service by StarTech.com, or an endorsement of the product(s) to which this manual applies by the third-party company in question. Regardless of any direct acknowledgement elsewhere in the body of this document, StarTech.com hereby acknowledges that all trademarks, registered trademarks, service marks, and other protected names and/or symbols contained in this manual and related documents are the property of their respective holders.

# Table of Contents

Introduction.....	1
Before You Begin.....	1
System Requirements.....	1
Contents.....	1
Installation.....	2
Installing the Serial Card.....	2
Installing the drivers.....	2
Maximize Data Transfer Rates.....	4
Specifications.....	5
Technical Support.....	6
Warranty Information.....	6

# Introduction

Thank you for purchasing a StarTech.com 16950 RS-232 Dual Voltage Serial Card. This PCI I/O card allows you use DB-9 cables to connect various serial devices, to any computer with an available PCI expansion slot.

## Before You Begin

### System Requirements

- A computer with an available PCI port
- Windows® 8 / 8.1 (32/64bit), 7 (32/64), Vista (32/64), XP (32/64), 2000, ME, 98SE, 95 Windows Server® 2012, 2008 R2, 2003 Linux 2.6.11 and up.
- A CD-ROM, DVD-ROM, or other compatible optical drive (for software installation)
- Pentium class PC or higher with an available PCI or PCI-X slot
- A standard DB9-M Serial Cable for each port

### Contents

This package should contain:

- 1 x PCI Serial Card
- 1 x Low Profile Bracket (2x for PCI2S950DV)
- 1 x Driver CD
- 1 x Instruction Manual

# Installation

## Installing the Serial Card

1. Shut down all power connected to the computer, as well as all devices connected to the computer peripherally (i.e. Printers, Monitors, Scanners etc.). As an added step to ensure safe installation, unplug the power supply from the computer.
2. Remove the computer cover. For more detailed instruction on how to perform this step, please refer to the documentation that was included with your computer at the time of purchase.
3. Locate an empty PCI slot, removing the metal bracket covering the accompanying empty port/socket.
4. Position the serial card above the open PCI slot, ensuring that the card is aligned with the entire slot. Insert the card firmly into the slot, distributing force evenly across the length of the board. Once inserted, secure the card into the adjoining socket (previously covered by metal bracket), using the correct size screw (please consult documentation that accompanied purchase of computer).
5. Replace the computer cover and re-connect all power to the computer.

## Installing the drivers

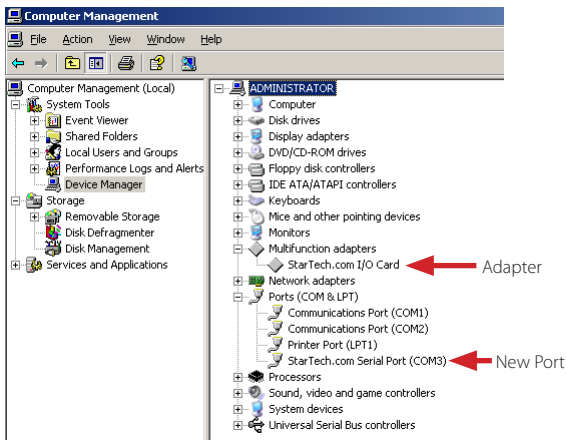
### Windows

Upon rebooting the computer for the first time following the installation of the serial card, Windows will notify you that new hardware has been detected. At this time, you will be prompted for driver installation.

1. Select Install from a specific location, insert the Driver CD and click Next.
2. At the screen that follows, select Search for the best drivers in these locations, and place a checkmark next to Include this location in the search. Ensure that the proper file path has been specified, then click Next.
3. Windows will then notify you that the software being installed has not passed the Windows Logo testing process. Please disregard this warning, and click Continue Anyway.
4. Windows will then proceed with installing the serial card. When complete, you will be notified that the wizard has finished installation. Please click Finish.
5. Once the card has been installed, Windows will require that the same steps be followed in order to install the serial ports. As such, to complete installation, please repeat steps #1-4. For PCI2S950DV, the second serial port will require installation, which will automatically launch following installation of the first port. As such, if you are installing PCI2S950DV, you will be required to follow steps #1-4 a third time.

- Following installation, please right-click on My Computer, and click Manage. Click on Device Manager to view installed components. Here, you will find the newly installed adapter and ports.

Please note: PCI2S950DV installation will result in two ports being displayed in Device Manager.



# Maximize Data Transfer Rates

Once installation is complete, you will be able to configure the port(s) provided by the card, as you would any other serial port. To do so, browse through the following path:

**Start > Control Panel > System > Hardware (tab) > Device Manager**

To maximize the port data transfer capability, right-click on one of the newly installed ports, and select Properties. Once the Properties window opens, click on the Data Rate tab. Here you will see a button labelled Detect Crystal Frequency. Click on the button to automatically detect the port data transfer capability. Please note that while PCI1S950DV only requires one such configuration, PCI2S950DV will require configuration for each separate port.

# Specifications

	<b>PCI1S950DV</b>	<b>PCI2S950DV</b>
<b>Bus Type</b>	PCI 5V / PCI-X 3.3V	
<b>Form Factor</b>	Full/ Low Profile	
<b>Chipset</b>	OX16PCI952	
<b>Connectors</b>	1 x DB9 Male	2 x DB9 Male
<b>Supported Serial Protocol</b>	RS-232	
<b>Maximum Data Transfer Rate</b>	460 Kbps	
<b>Buffer Size</b>	128 byte	
<b>Compatible Operating System</b>	Windows 95/ 98SE/ ME/ 2000/ XP/ Vista/ 7 (32/64-bit), Linux kernel 2.6.11+	



# Technical Support

StarTech.com's lifetime technical support is an integral part of our commitment to provide industry-leading solutions. If you ever need help with your product, visit [www.startech.com/support](http://www.startech.com/support) and access our comprehensive selection of online tools, documentation, and downloads.

## Warranty Information

This product is backed by a lifetime warranty.

In addition, StarTech.com warrants its products against defects in materials and workmanship for the periods noted, following the initial date of purchase. During this period, the products may be returned for repair, or replacement with equivalent products at our discretion. The warranty covers parts and labor costs only. StarTech.com does not warrant its products from defects or damages arising from misuse, abuse, alteration, or normal wear and tear.

### Limitation of Liability

In no event shall the liability of StarTech.com Ltd. and StarTech.com USA LLP (or their officers, directors, employees or agents) for any damages (whether direct or indirect, special, punitive, incidental, consequential, or otherwise), loss of profits, loss of business, or any pecuniary loss, arising out of or related to the use of the product exceed the actual price paid for the product. Some states do not allow the exclusion or limitation of incidental or consequential damages. If such laws apply, the limitations or exclusions contained in this statement may not apply to you.

# StarTech.com

Hard-to-find **made easy**®

Hard-to-find made easy. At StarTech.com, that isn't a slogan. It's a promise.

StarTech.com is your one-stop source for every connectivity part you need. From the latest technology to legacy products — and all the parts that bridge the old and new — we can help you find the parts that connect your solutions.

We make it easy to locate the parts, and we quickly deliver them wherever they need to go. Just talk to one of our tech advisors or visit our website. You'll be connected to the products you need in no time.

Visit **[www.startech.com](http://www.startech.com)** for complete information on all StarTech.com products and to access exclusive resources and time-saving tools.

*StarTech.com is an ISO 9001 Registered manufacturer of connectivity and technology parts. StarTech.com was founded in 1985 and has operations in the United States, Canada, the United Kingdom and Taiwan servicing a worldwide market.*