

2 Port Remote Power Control IP PDU (Power Distribution Unit) / 2 Port Remote Power Control IP PDU with Console and Sensor Ports

PDU02IP / PDU02IPSC

DE: Bedienungsanleitung - de.startech.com

FR: Guide de l'utilisateur - fr.startech.com

ES: Guía del usuario - es.startech.com

IT: Guida per l'uso - it.startech.com

NL: Gebruiksaanwijzing - nl.startech.com

PT: Guia do usuário - pt.startech.com

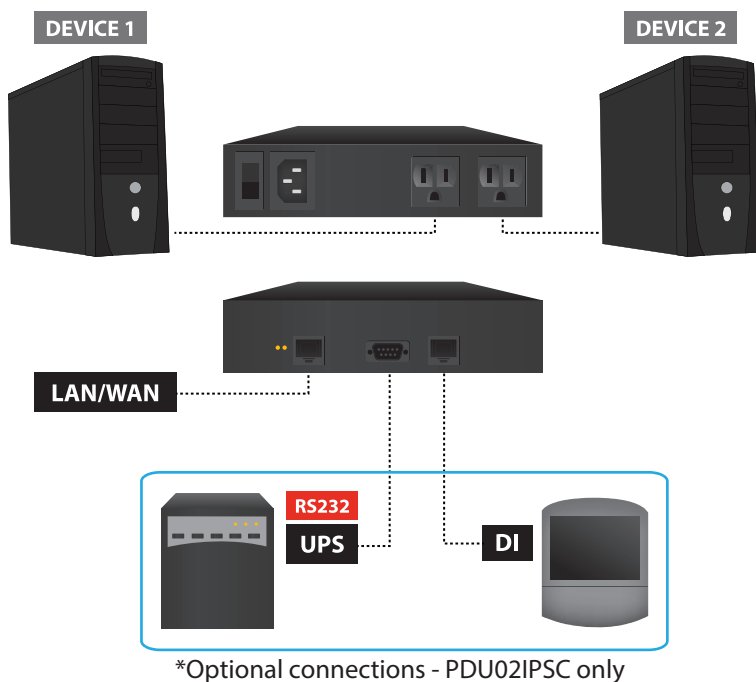
NOTE: Please visit www.startech.com/downloads for the full set of operating instructions.

Packaging Contents

- 1 x 2 Port PDU
- 1 x Power Cable
- 1 x Quick Start Guide

Hardware Installation

1. Connect the power cord to the power inlet and to a wall outlet
2. Plug your equipment into the two output receptacles
3. Connect an Ethernet cable from the PDU to your network
4. Turn the power switch to the ON position



*Optional connections - PDU02IPSC only

Logging In for the First Time

The minimum requirement to operate the PDU is to setup the IP Address, subnet mask, and default gateway, which can be done through your web browser or using the IP Search Utility application on the CD.

Default Settings:

IP address: 192.168.1.10

Subnet mask: 255.255.255.0

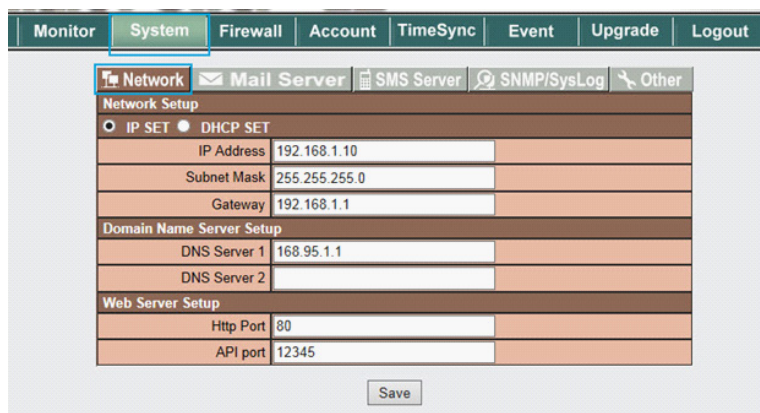
Default Gateway: 192.168.1.1

User name / Password: admin / admin (lower case)

Web Browser

NOTE: The workstation and the PDU must be on the same LAN

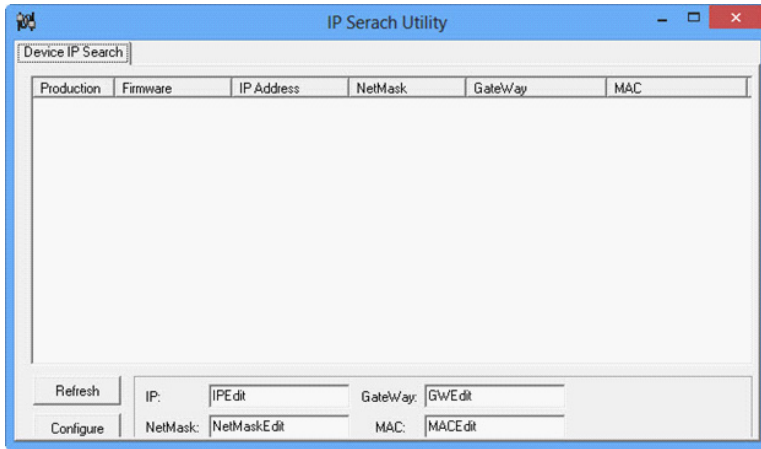
1. Open a web browser and input the default IP address (192.168.1.10)
2. After the login screen appears enter admin / admin for the User name and Password
3. Click on the System tab from the menu bar of the web interface and then click on Network to set the IP address and network info of this device



IP Search Utility

NOTE: The workstation and the PDU must be on the same LAN for the IP Search Utility to detect it, and the Windows Firewall must also be turned off.

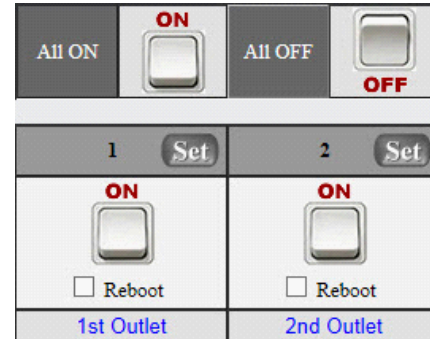
1. Open the Windows Control Panel
2. Select Windows Firewall
3. Select Off and then click the OK button
4. Insert the provided CD in the CD-ROM drive
5. Launch the IP Search Utility program



6. Click on the Refresh button to search for all PDU02IPxx units on the LAN
7. Click on the detected PDU and configure the IP address, Gateway and Net Mask, then click the Configure button twice. You will see the values you specified populate in the main window.
8. Repeat step 7 for each device if you have multiple PDU02IPxx units connected.
9. Once all devices are configured, close the IP Search Utility program and turn the Windows Firewall back on.

Power Switch Operation

The global outlet controls can be used to either turn all outlets on, or all outlets off, while each individual outlet allows for On / Off / Reboot controls.



- Clicking the ALL ON button will turn ON both outlets. Clicking on the ALL OFF button will turn OFF all of the outlets.
- Clicking the switch for Port 1 or Port 2 will flip the switch to the opposite state (ON/OFF) for that individual outlet.
- If you want to Reboot (cycle off, then back on) an individual outlet, check the Reboot box and then click on the switch.



FCC Compliance Statement

This equipment has been tested and found to comply with the limits for a Class B digital device, pursuant to part 15 of the FCC Rules. These limits are designed to provide reasonable protection against harmful interference in a residential installation. This equipment generates, uses and can radiate radio frequency energy and, if not installed and used in accordance with the instructions, may cause harmful interference to radio communications. However, there is no guarantee that interference will not occur in a particular installation. If this equipment does cause harmful interference to radio or television reception, which can be determined by turning the equipment off and on, the user is encouraged to try to correct the interference by one or more of the following measures:

- Reorient or relocate the receiving antenna.
- Increase the separation between the equipment and receiver.
- Connect the equipment into an outlet on a circuit different from that to which the receiver is connected.
- Consult the dealer or an experienced radio/TV technician for help.

Use of Trademarks, Registered Trademarks, and other Protected Names and Symbols

This manual may make reference to trademarks, registered trademarks, and other protected names and/or symbols of third-party companies not related in any way to StarTech.com. Where they occur these references are for illustrative purposes only and do not represent an endorsement of a product or service by StarTech.com, or an endorsement of the product(s) to which this manual applies by the third-party company in question. Regardless of any direct acknowledgement elsewhere in the body of this document, StarTech.com hereby acknowledges that all trademarks, registered trademarks, service marks, and other protected names and/or symbols contained in this manual and related documents are the property of their respective holders.

Technical Support

StarTech.com's lifetime technical support is an integral part of our commitment to provide industry-leading solutions. If you ever need help with your product, visit www.startech.com/support and access our comprehensive selection of online tools, documentation, and downloads.

For the latest drivers/software, please visit www.startech.com/downloads

Warranty Information

This product is backed by a one year warranty.

In addition, StarTech.com warrants its products against defects in materials and workmanship for the periods noted, following the initial date of purchase. During this period, the products may be returned for repair, or replacement with equivalent products at our discretion. The warranty covers parts and labor costs only. StarTech.com does not warrant its products from defects or damages arising from misuse, abuse, alteration, or normal wear and tear.

Limitation of Liability

In no event shall the liability of StarTech.com Ltd. and StarTech.com USA LLP (or their officers, directors, employees or agents) for any damages (whether direct or indirect, special, punitive, incidental, consequential, or otherwise), loss of profits, loss of business, or any pecuniary loss, arising out of or related to the use of the product exceed the actual price paid for the product. Some states do not allow the exclusion or limitation of incidental or consequential damages. If such laws apply, the limitations or exclusions contained in this statement may not apply to you.