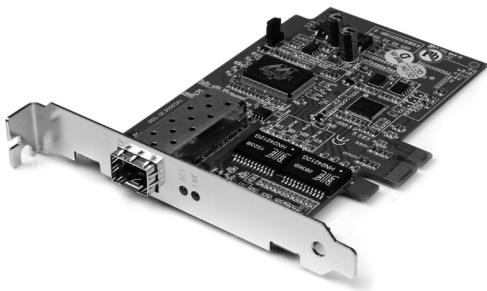


PCI Express Gigabit Ethernet Fiber Open SFP Network Card

PEX1000SFP



*actual product may vary from photos

DE: Bedienungsanleitung - de.startech.com

FR: Guide de l'utilisateur - fr.startech.com

ES: Guía del usuario - es.startech.com

IT: Guida per l'uso - it.startech.com

NL: Gebruiksaanwijzing - nl.startech.com

PT: Guia do usuário - pt.startech.com

For the most up-to-date information, please visit: www.startech.com

FCC Compliance Statement

This equipment has been tested and found to comply with the limits for a Class B digital device, pursuant to part 15 of the FCC Rules. These limits are designed to provide reasonable protection against harmful interference in a residential installation. This equipment generates, uses and can radiate radio frequency energy and, if not installed and used in accordance with the instructions, may cause harmful interference to radio communications. However, there is no guarantee that interference will not occur in a particular installation. If this equipment does cause harmful interference to radio or television reception, which can be determined by turning the equipment off and on, the user is encouraged to try to correct the interference by one or more of the following measures:

- Reorient or relocate the receiving antenna.
- Increase the separation between the equipment and receiver.
- Connect the equipment into an outlet on a circuit different from that to which the receiver is connected.
- Consult the dealer or an experienced radio/TV technician for help.

Use of Trademarks, Registered Trademarks, and other Protected Names and Symbols

This manual may make reference to trademarks, registered trademarks, and other protected names and/or symbols of third-party companies not related in any way to StarTech.com. Where they occur these references are for illustrative purposes only and do not represent an endorsement of a product or service by StarTech.com, or an endorsement of the product(s) to which this manual applies by the third-party company in question. Regardless of any direct acknowledgement elsewhere in the body of this document, StarTech.com hereby acknowledges that all trademarks, registered trademarks, service marks, and other protected names and/or symbols contained in this manual and related documents are the property of their respective holders.

Table of Contents

Introduction	1
Features	1
Package Contents	1
Installation	2
Hardware Installation	2
Connecting to a Network.....	3
Software Installation.....	4
Specifications	5
Technical Support	6
Warranty Information	6

Introduction

The PEX1000SFP PCI Express Gigabit Ethernet Fiber Open SFP Network Card lets you connect a PCI Express-based PC directly to a fiber optic network using the Gigabit SFP of your choice.

A versatile solution for connecting a computer directly to a gigabit fiber network, the PCIe SFP network adapter enables you to choose the Gigabit SFP that best suits your network fiber connection and distance requirements (see our full line of Gigabit transceivers for compatible solutions).

Ideal for secure network setups, the open SFP NIC offers a direct fiber connection which is not susceptible to electronic interference like standard RJ45 networks.

Backed by a StarTech.com 2-year warranty and free lifetime technical support.

Features

- Supports Full/Half-duplex Auto-Negotiation, Auto-MDI/MDIX
- Compliant with IEEE 802.3z 1000Base-SX/LX, IEEE802.1Q VLAN Tagging, IEEE802.1p Layer 2 Priority Encoding, IEEE 802.3x full duplex flow control, RFC 1157 SNMP v1
- Jumbo Frame Support
- Supports PCI Message Signaled Interrupt (MSI)
- Preboot Execution Environment (PXE) 2.1

Package Contents

- 1 x PCI Express Open SFP Network Card
- 1 x Driver CD
- 1 x Instruction Manual

Installation

WARNING! PCI Express cards, like all computer equipment, can be severely damaged by static electricity. Be sure that you are properly grounded before opening your computer case or touching your PCI Express card. StarTech.com recommends that you wear an anti-static strap when installing any computer component. If an anti-static strap is unavailable, discharge yourself of any static electricity build-up by touching a large grounded metal surface (such as the computer case) for several seconds. Also be careful to handle the PCI Express card by its edges and not the gold connectors.

Hardware Installation

1. Turn OFF the computer power before installation.
2. Remove the chassis cover from your computer.
3. Locate an unused PCI Express slot and remove the corresponding slot cover from the rear panel of the computer chassis. Retain the screw (if applicable) used to hold the slot cover in place.
4. Align the PCI Express card with the unused PCI Express expansion slot. Applying pressure evenly across the top edge of the expansion card, firmly but gently insert the card into the slot, ensuring that the card is properly aligned with the rear panel slot.
5. Secure the card to the motherboard and rear chassis using the screw removed in step 3 (if necessary). Secure the additional serial port provided by the daughter board (smaller circuit board to an adjacent rear bracket).
6. Replace the chassis cover (removed in step 2).
7. Power on the computer. Once the computer has been rebooted, the operating system will detect that the PCI Express card has been installed and request driver installation, detailed in the next section.

Connecting to a Network

Note: You must connect the PCI Express Fiber Gigabit Ethernet Adapter to the network before installing the network driver.

For connector type, cabling requirements, and maximum segment distance when connecting the PCI Express Gigabit Ethernet Adapter to your network, please refer to the following table.

Speed	Connector	Port Speed Half/Full Duplex	Cable	Max. Distance
1000Base-T	RJ-45	2000 Mbps	4-pair UTP/ STP Cat.5	100m
1000Base-SX	SC, LC	2000 Mbps	MMF (62.5 μ m)	220m 2km
1000Base-SX	SC, LC	2000 Mbps	MMF (50 μ m)	550m
1000Base-LX	SC, LC	2000 Mbps	SMF (9, 10 μ m)	10, 20, 50km
1000Base-BX	SC, LC	2000 Mbps	SMF (9, 10 μ m)	20, 40km

1. Install your desired SFP into the SFP slot on the card.
2. Prepare a network cable with corresponding connectors for the two end devices, one end to the PCI Express Fiber Gigabit Ethernet Adapter and the other to a 1000Mbps fiber port on the network switch.
3. Connect the network cable to the connector on the PCI Express Fiber Gigabit Ethernet Adapter. This network cable consists of two individual cables: one for 'transmission (TX)', and the other for 'reception (RX)'.
4. Connect the other end of the network cable to a 1000BASE-SX switch.
5.
 - i. Insert the cable that is connected to the transmit (TX) connector on the PCI Express Fiber Gigabit Ethernet Adapter into the receive(RX) connector on the network switch.
 - ii. Insert the cable that is connected to the receive (RX) connector on the PCI Express Fiber Gigabit Ethernet Adapter into the transmit (TX) connector on the network switch.
6. When the cable is properly connected to two end devices, turn on the power to the PC.
7. Check the LNK (Link) LED. The LED will come on when the PCI Express Fiber Gigabit Ethernet Adapter is receiving a good link signal from the connected device, a switch.

Software Installation

1. Once PEX1000SFP has been installed in the computer, turn on the power to the computer.

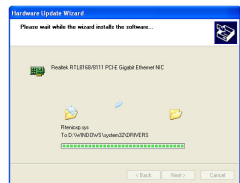
2. When the Found New Hardware Wizard window pops up, select Install from a list or specific location (Advanced) and click Next to continue.



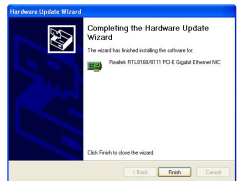
3. Select Search for the best driver in these locations, and then select Include this location in the search. Click Browse to specify the driver location and click Next to continue.



4. Installation will begin...



5. Click Finish to complete the driver installation.



Specifications

Applicable Standards	IEEE 802.3z 1000Base-SX/LX IEEE802.1Q VLAN Tagging IEEE802.1p Layer 2 Priority Encoding IEEE 802.3x full duplex flow control RFC 1157 SNMP v1
LED Indicators	Link, Activity
Operating Temperature	0°C ~ 45° C (32°F ~ 113°F)
Storage Temperature	-10°C ~ 70°C (14°F ~ 158°F)
Humidity	5% ~ 95% RH non-condensing
Chipset	Realtek - RTL8168B Marvell - 88E1111-RCJ1
Maximum Connection Distance	Dependent on the SFP used
OS Support	Windows® 8 (32/64bit), 7 (32/64), Vista(32/64), XP(32/64), 2000 Windows® Server 2008 R2, 2003(32/64) Linux 2.4.x/ 2.6.x

Technical Support

StarTech.com's lifetime technical support is an integral part of our commitment to provide industry-leading solutions. If you ever need help with your product, visit www.startech.com/support and access our comprehensive selection of online tools, documentation, and downloads.

For the latest drivers/software, please visit www.startech.com/downloads

Warranty Information

This product is backed by a two year warranty.

In addition, StarTech.com warrants its products against defects in materials and workmanship for the periods noted, following the initial date of purchase. During this period, the products may be returned for repair, or replacement with equivalent products at our discretion. The warranty covers parts and labor costs only. StarTech.com does not warrant its products from defects or damages arising from misuse, abuse, alteration, or normal wear and tear.

Limitation of Liability

In no event shall the liability of StarTech.com Ltd. and StarTech.com USA LLP (or their officers, directors, employees or agents) for any damages (whether direct or indirect, special, punitive, incidental, consequential, or otherwise), loss of profits, loss of business, or any pecuniary loss, arising out of or related to the use of the product exceed the actual price paid for the product. Some states do not allow the exclusion or limitation of incidental or consequential damages. If such laws apply, the limitations or exclusions contained in this statement may not apply to you.

Hard-to-find made easy. At StarTech.com, that isn't a slogan. It's a promise.

StarTech.com is your one-stop source for every connectivity part you need. From the latest technology to legacy products — and all the parts that bridge the old and new — we can help you find the parts that connect your solutions.

We make it easy to locate the parts, and we quickly deliver them wherever they need to go. Just talk to one of our tech advisors or visit our website. You'll be connected to the products you need in no time.

Visit www.startech.com for complete information on all StarTech.com products and to access exclusive resources and time-saving tools.

StarTech.com is an ISO 9001 Registered manufacturer of connectivity and technology parts. StarTech.com was founded in 1985 and has operations in the United States, Canada, the United Kingdom and Taiwan servicing a worldwide market.