

16 Port Low Profile RS232 PCI Express Serial Card & Cable

PEX16S952LP



*actual product may vary from photos

DE: Bedienungsanleitung - de.startech.com

FR: Guide de l'utilisateur - fr.startech.com

ES: Guía del usuario - es.startech.com

IT: Guida per l'uso - it.startech.com

NL: Gebruiksaanwijzing - nl.startech.com

PT: Guia do usuário - pt.startech.com

For the most up-to-date information, please visit: www.startech.com

FCC Compliance Statement

This equipment has been tested and found to comply with the limits for a Class B digital device, pursuant to part 15 of the FCC Rules. These limits are designed to provide reasonable protection against harmful interference in a residential installation. This equipment generates, uses and can radiate radio frequency energy and, if not installed and used in accordance with the instructions, may cause harmful interference to radio communications. However, there is no guarantee that interference will not occur in a particular installation. If this equipment does cause harmful interference to radio or television reception, which can be determined by turning the equipment off and on, the user is encouraged to try to correct the interference by one or more of the following measures:

- Reorient or relocate the receiving antenna.
- Increase the separation between the equipment and receiver.
- Connect the equipment into an outlet on a circuit different from that to which the receiver is connected.
- Consult the dealer or an experienced radio/TV technician for help.

Use of Trademarks, Registered Trademarks, and other Protected Names and Symbols

This manual may make reference to trademarks, registered trademarks, and other protected names and/or symbols of third-party companies not related in any way to StarTech.com. Where they occur these references are for illustrative purposes only and do not represent an endorsement of a product or service by StarTech.com, or an endorsement of the product(s) to which this manual applies by the third-party company in question. Regardless of any direct acknowledgement elsewhere in the body of this document, StarTech.com hereby acknowledges that all trademarks, registered trademarks, service marks, and other protected names and/or symbols contained in this manual and related documents are the property of their respective holders.

Table of Contents

Introduction	1
Packaging Contents	1
System Requirements.....	1
Installation	1
Jumper Configuration	1
Hardware Installation	2
Driver Installation	3
Windows 2000/XP/Server 2003	3
Windows Vista	3
Verifying Installation	4
Windows 2000/XP/Vista/7	4
Pinout	4
Specifications	5
Technical Support	8
Warranty Information	8

Introduction

The PEX16S952LP PCI Express serial card (16950 UART) lets you turn a low profile PCIe slot into sixteen RS232 (DB9) serial connections.

Packaging Contents

- PEX16S952LP card
- 16-port breakout cable
- Full Profile bracket
- Driver CD
- Instruction Manual

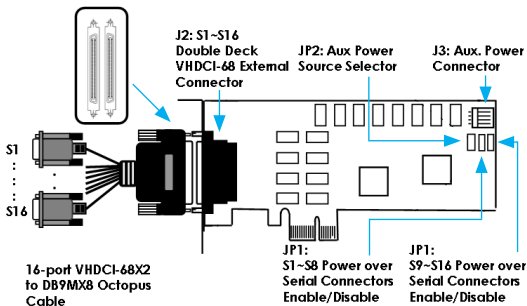
System Requirements

- PCI Express enabled computer system with available slot
- Microsoft Windows® 2000/XP/Vista/7, or Linux® kernel 2.4.x/2.6.x

Installation

WARNING! PCI Express cards, like all computer equipment, can be severely damaged by static electricity. Be sure that you are properly grounded before opening your computer case or touching your PCI Express card. StarTech.com recommends that you wear an anti-static strap when installing any computer component. If an anti-static strap is unavailable, discharge yourself of any static electricity build-up by touching a large grounded metal surface (such as the computer case) for several seconds. Also be careful to handle the PCI Express card by its edges and not the gold connectors.

Jumper Configuration



JP1 and JP3 - Power over Serial (pin-9)

Enable or disable power output on pin 9 for the DB9 serial ports S1 to S8 (JP1) and S9 to S16 (JP3).

Disable power output on pin-9 of the DB9 connector
(Default)

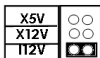


Enable power output on pin-9 of the DB connector



JP2 - Power over Serial Voltage Selector

Internal 12V: 12V power is drawn from the PCIe bus connector (**Default**)



External 12V: 12V power is drawn from the J3 power connector



External 5V: 5V power is drawn from the J3 power connector



Hardware Installation

1. Turn your computer off and any peripherals connected to the computer (i.e. Printers, external hard drives, etc.). Unplug the power cable from the rear of the power supply on the back of the computer.
2. Remove the cover from the computer case. See documentation for your computer system for details.
3. Locate an open PCI Express slot and remove the metal cover plate on the rear of the computer case (Refer to documentation for your computer system for details.). Note that this card will work in PCI Express slots of additional lanes (ie. x4, x8 or x16 slots).

4. Insert the card into the open PCI Express slot and fasten the bracket to the rear of the case.
5. Place the cover back onto the computer case.
6. Insert the power cable into the socket on the power supply and reconnect all other connectors removed in Step 1.

Driver Installation

Windows 2000/XP/Server 2003

When the Found New Hardware wizard appears on the screen, insert the Driver CD into your CD-ROM drive. If you are prompted to connect to Windows Update, please select the “No, not this time” option and click Next.

Note: Alternatively, you can download the latest drivers from the www.startech.com website (recommended), applicable to the Operating System on the host computer that you are installing the card to.

1. Select the option “Install Drivers Automatically (Recommended)” and then click the Next button.
2. Windows should now start searching for the drivers. Once this has completed, click the Finish button.

Windows Vista

1. When the Found New Hardware window appears on the screen, click on the “Locate and install drivers software (recommended)” option. If prompted to search online, select the “Don’t search online” option.
2. When prompted to insert the disc, insert the Driver CD that came with the card, into your CD-ROM drive and Windows will automatically proceed to search the CD.

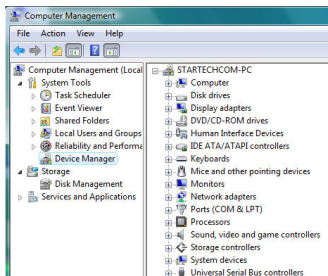
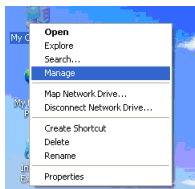
Note: Alternatively, you can download the latest drivers from the www.startech.com website (recommended), applicable to the Operating System on the host computer that you are installing the card to.

3. If a Windows Security dialog window appears, click the “Install this driver software anyway” option to proceed.
4. Once the driver is installed, click the Close button.

Verifying Installation

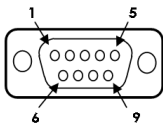
Windows 2000/XP/Vista/7

From the main desktop, right-click on “My Computer” (“Computer” in Vista/7), then select Manage. In the new Computer Management window, select Device Manager from the left window panel.



Double-click on the Ports (COM & LPT) option. The appropriate number of additional COM ports should be visible. The port(s) are ready to connect to new devices.

Pinout



<u>9 Pins</u>	<u>Signal</u>
1	DCD
2	RXD
3	TXD
4	DTR
5	GND
6	DSR
7	RTS
8	CTS
9	(Power) *

Pin-9 supports either 5V, 12V or RI (no power) modes. Set the internal jumper on the card appropriately for your serial device.

Specifications

Bus Interface	PCI Express rev 1.1
Connectors	16 x DB9 male (via breakout cable)
Chipset ID	PLX/Oxford OXPCLe958
Serial Protocol	RS-232
Serial UART	16C950
Maximum Data Transfer Rate	921.6 Kbps
Operating Temperature	0°C ~ 55°C (32°F ~ 131°F)
Storage Temperature	-20°C ~ 85°C (-4°F ~ 185°F)
Humidity	5~95% RH
Compatible Operating Systems	Windows 2000/XP/Vista/7, Linux kernel 2.4.x/2.6.x

Technical Support

StarTech.com's lifetime technical support is an integral part of our commitment to provide industry-leading solutions. If you ever need help with your product, visit www.startech.com/support and access our comprehensive selection of online tools, documentation, and downloads.

For the latest drivers/software, please visit www.startech.com/downloads

Warranty Information

This product is backed by a lifetime warranty.

In addition, StarTech.com warrants its products against defects in materials and workmanship for the periods noted, following the initial date of purchase. During this period, the products may be returned for repair, or replacement with equivalent products at our discretion. The warranty covers parts and labor costs only. StarTech.com does not warrant its products from defects or damages arising from misuse, abuse, alteration, or normal wear and tear.

Limitation of Liability

In no event shall the liability of StarTech.com Ltd. and StarTech.com USA LLP (or their officers, directors, employees or agents) for any damages (whether direct or indirect, special, punitive, incidental, consequential, or otherwise), loss of profits, loss of business, or any pecuniary loss, arising out of or related to the use of the product exceed the actual price paid for the product. Some states do not allow the exclusion or limitation of incidental or consequential damages. If such laws apply, the limitations or exclusions contained in this statement may not apply to you.

Hard-to-find made easy. At StarTech.com, that isn't a slogan. It's a promise.

StarTech.com is your one-stop source for every connectivity part you need. From the latest technology to legacy products — and all the parts that bridge the old and new — we can help you find the parts that connect your solutions.

We make it easy to locate the parts, and we quickly deliver them wherever they need to go. Just talk to one of our tech advisors or visit our website. You'll be connected to the products you need in no time.

Visit www.startech.com for complete information on all StarTech.com products and to access exclusive resources and time-saving tools.

StarTech.com is an ISO 9001 Registered manufacturer of connectivity and technology parts. StarTech.com was founded in 1985 and has operations in the United States, Canada, the United Kingdom and Taiwan servicing a worldwide market.