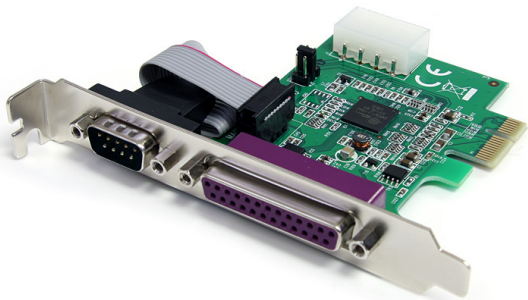


1-Port Serial, 1-Port Parallel PCI Express Combo Card

PEX1S1P952



*actual product may vary from photos

DE: Bedienungsanleitung - de.startech.com

FR: Guide de l'utilisateur - fr.startech.com

ES: Guía del usuario - es.startech.com

IT: Guida per l'uso - it.startech.com

NL: Gebruiksaanwijzing - nl.startech.com

PT: Guia do usuário - pt.startech.com

For the most up-to-date information, please visit: www.startech.com



FCC Compliance Statement

This equipment has been tested and found to comply with the limits for a Class B digital device, pursuant to part 15 of the FCC Rules. These limits are designed to provide reasonable protection against harmful interference in a residential installation. This equipment generates, uses and can radiate radio frequency energy and, if not installed and used in accordance with the instructions, may cause harmful interference to radio communications. However, there is no guarantee that interference will not occur in a particular installation. If this equipment does cause harmful interference to radio or television reception, which can be determined by turning the equipment off and on, the user is encouraged to try to correct the interference by one or more of the following measures:

- Reorient or relocate the receiving antenna.
- Increase the separation between the equipment and receiver.
- Connect the equipment into an outlet on a circuit different from that to which the receiver is connected.
- Consult the dealer or an experienced radio/TV technician for help.

Use of Trademarks, Registered Trademarks, and other Protected Names and Symbols

This manual may make reference to trademarks, registered trademarks, and other protected names and/or symbols of third-party companies not related in any way to StarTech.com. Where they occur these references are for illustrative purposes only and do not represent an endorsement of a product or service by StarTech.com, or an endorsement of the product(s) to which this manual applies by the third-party company in question. Regardless of any direct acknowledgement elsewhere in the body of this document, StarTech.com hereby acknowledges that all trademarks, registered trademarks, service marks, and other protected names and/or symbols contained in this manual and related documents are the property of their respective holders.

Table of Contents

Introduction	1
Packaging Contents	1
System Requirements.....	1
Installation	2
Setting Power Mode (Serial Port only)	2
Hardware Installation	3
Driver Installation.....	3
Verifying Installation.....	4
Specifications	5
Technical Support	6
Warranty Information	6

Introduction

The PEX1S1P952 '1S1P' Native PCI Express Parallel/Serial Combo Card with 16950 UART turns a PCI Express (PCIe) slot into one RS232 (DB9) serial, and one Parallel port.

The adapter card features a native PCI Express single chip design that allows you to take advantage of full PCI Express capability, providing improved speed and reliability while reducing the load applied to the CPU by as much as 48% over conventional serial cards using a bridge chip design.

This 1-Port Serial 1-Port Parallel card offers compatibility with a broad range of operating systems including Windows® (32/64-bit) and Linux, for easy integration into mixed environments. The card also features an optional low profile/half-height bracket that allows the card to be installed in virtually any computer case, regardless of form factor.

Packaging Contents

- 1 x PCI Express Serial/Parallel card
- 2 x Low Profile Installation Bracket
- 1 x Driver CD
- 1 x Instruction Manual

System Requirements

- PCI Express enabled computer system with available PCIe slot
- Computer chassis with a single full profile expansion card slot, or dual low profile expansion card slots
- Microsoft® Windows® 2000/XP/Server 2003/Vista/Server 2008 R2/7 (32/64-bit), or Linux® kernel 2.6.x

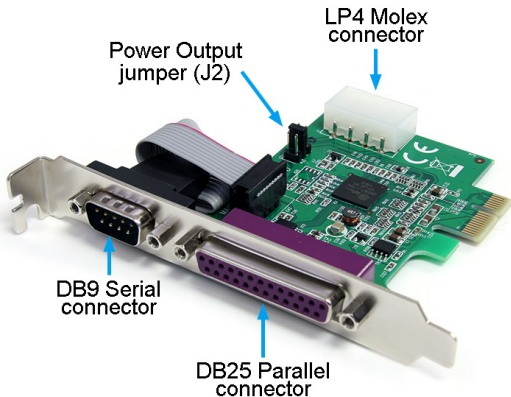
Installation



WARNING! PCI Express cards, like all computer equipment, can be severely damaged by static electricity. Be sure that you are properly grounded before opening your computer case or touching your PCI Express card. StarTech.com recommends that you wear an anti-static strap when installing any computer component. If an anti-static strap is unavailable, discharge yourself of any static electricity build-up by touching a large grounded metal surface (such as the computer case) for several seconds. Also be careful to handle the PCI Express card by its edges and not the gold connectors.

Setting Power Mode (Serial Port only)

This card is specially designed to allow for power output from the ninth pin of the DB9 connector for devices that support power over serial. This card allows users to set the port with 5V, 12V, or RI (no power) by setting the J2 jumper. Users can also choose to draw the necessary power from the system power supply by connecting to the LP4 power connector.



Hardware Installation

1. Turn your computer off and any peripherals connected to the computer (i.e. Printers, external hard drives, etc). Unplug the power cable from the rear of the power supply on the back of the computer and disconnect all peripheral devices.
2. Remove the cover from the computer case. See documentation for your computer system for details.
3. Locate an open PCI Express slot and remove the metal cover plate on the rear of the computer case (refer to documentation for your computer system for details).

NOTE: This card will work in PCI Express slots of additional lanes (i.e. x4, x8 or x16 slots).

4. Insert the card into the open PCI Express slot and fasten the bracket to the rear of the case.

NOTE: If installing the card into a small form factor/low profile system, replacing the pre-installed full profile bracket with the included low profile installation bracket may be necessary. The serial port will be relocated to a second bracket, so the card will take up two expansion card slots.

5. **OPTIONAL:** If supplying power from the computer system power supply, (see "Setting Power Mode") connect the LP4 molex plug into the card.
6. Place the cover back onto the computer case.
7. Insert the power cable into the socket on the power supply and reconnect all other connectors removed in Step 1.

Driver Installation

Windows 2000/XP/Server 2003

1. When the Found New Hardware wizard appears on the screen, insert the Driver CD into your CD/DVD drive. If you are prompted to connect to Windows Update, please select the "No, not this time" option and click Next.
2. Select the option "Install Drivers Automatically (Recommended)" and then click the Next button.
3. Windows should now start searching for the drivers. Once this has completed, click the Finish button.

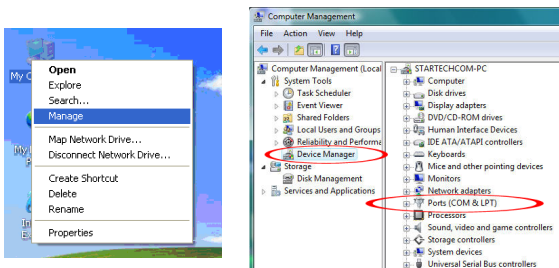
Windows Vista/7/Server 2008 R2

1. When the Found New Hardware window appears on the screen, click on the “Locate and install drivers software (recommended)” option. If prompted to search online, select the “Don’t search online” option.
2. When prompted to insert the disc, insert the Driver CD that came with the card, into your CD/DVD drive and Windows will automatically proceed to search the CD.
3. If a Windows Security dialog window appears, click the “Install this driver software anyway” option to proceed.
4. Once the driver is installed, click the Close button.

Verifying Installation

Windows 2000/XP/Server 2003/Vista/Server 2008 R2/7

From the main desktop, right-click on “My Computer” (“Computer” in Vista/7), then select Manage. In the new Computer Management window, select Device Manager from the left window panel.



Double-click on the “Ports (COM & LPT)” option. An additional COM port and parallel (LPT) port should be listed.

Specifications

Host Interface	PCI Express revision 1.1
Form Factor	Full / Low Profile
Chipset ID	PLX OXPCIe952
External Connectors	1 x DB9 male 1 x DB25 female
Internal Connectors	1 x LP4 Molex male
Supported Protocols / Modes	SPP / EPP / ECP, RS232
Maximum Data Transfer Rate	Serial: 115.2 Kbps Parallel: 1.5 Mbps
Data Bits	5, 6, 7, 8, 9
Parity	Even, Odd, Mark, Space, None
Stop Bits	1, 1.5, 2
Buffer Size	128 Byte
Operating Temperature	-10°C ~ 80°C (-14°F ~ 146°F)
Storage Temperature	-20°C ~ 100°C (-4°F ~ 212°F)
Humidity	0% ~ 60% RH
Dimensions	85.0mm x 60.0mm x 20.0mm
Weight	58g
Compatible Operating Systems	Windows® CE 6.0 / 5.0, 95, 98SE, 2000, XP, XP Embedded, Vista, 7, 8, 8.1, 10 Windows Server® 2003, 2008 R2, 2012, 2012 R2, 2016 Linux 2.4.x to 4.11.x LTS Versions only

Technical Support

StarTech.com's lifetime technical support is an integral part of our commitment to provide industry-leading solutions. If you ever need help with your product, visit www.startech.com/support and access our comprehensive selection of online tools, documentation, and downloads.

For the latest drivers/software, please visit www.startech.com/downloads

Warranty Information

This product is backed by a lifetime warranty.

In addition, StarTech.com warrants its products against defects in materials and workmanship for the periods noted, following the initial date of purchase. During this period, the products may be returned for repair, or replacement with equivalent products at our discretion. The warranty covers parts and labor costs only. StarTech.com does not warrant its products from defects or damages arising from misuse, abuse, alteration, or normal wear and tear.

Limitation of Liability

In no event shall the liability of StarTech.com Ltd. and StarTech.com USA LLP (or their officers, directors, employees or agents) for any damages (whether direct or indirect, special, punitive, incidental, consequential, or otherwise), loss of profits, loss of business, or any pecuniary loss, arising out of or related to the use of the product exceed the actual price paid for the product. Some states do not allow the exclusion or limitation of incidental or consequential damages. If such laws apply, the limitations or exclusions contained in this statement may not apply to you.

Hard-to-find made easy. At StarTech.com, that isn't a slogan. It's a promise.

StarTech.com is your one-stop source for every connectivity part you need. From the latest technology to legacy products — and all the parts that bridge the old and new — we can help you find the parts that connect your solutions.

We make it easy to locate the parts, and we quickly deliver them wherever they need to go. Just talk to one of our tech advisors or visit our website. You'll be connected to the products you need in no time.

Visit www.startech.com for complete information on all StarTech.com products and to access exclusive resources and time-saving tools.

StarTech.com is an ISO 9001 Registered manufacturer of connectivity and technology parts. StarTech.com was founded in 1985 and has operations in the United States, Canada, the United Kingdom and Taiwan servicing a worldwide market.