

2 Port Industrial PCIe RS232 Serial Card with Power Output and ESD Protection

PEX2S553S



*actual product may vary from photos

DE: Bedienungsanleitung - de.startech.com

FR: Guide de l'utilisateur - fr.startech.com

ES: Guía del usuario - es.startech.com

IT: Guida per l'uso - it.startech.com

NL: Gebruiksaanwijzing - nl.startech.com

PT: Guia do usuário - pt.startech.com

For the most up-to-date information, please visit: www.startech.com

FCC Compliance Statement

This equipment has been tested and found to comply with the limits for a Class B digital device, pursuant to part 15 of the FCC Rules. These limits are designed to provide reasonable protection against harmful interference in a residential installation. This equipment generates, uses and can radiate radio frequency energy and, if not installed and used in accordance with the instructions, may cause harmful interference to radio communications. However, there is no guarantee that interference will not occur in a particular installation. If this equipment does cause harmful interference to radio or television reception, which can be determined by turning the equipment off and on, the user is encouraged to try to correct the interference by one or more of the following measures:

- Reorient or relocate the receiving antenna.
- Increase the separation between the equipment and receiver.
- Connect the equipment into an outlet on a circuit different from that to which the receiver is connected.
- Consult the dealer or an experienced radio/TV technician for help.

Use of Trademarks, Registered Trademarks, and other Protected Names and Symbols

This manual may make reference to trademarks, registered trademarks, and other protected names and/or symbols of third-party companies not related in any way to StarTech.com. Where they occur these references are for illustrative purposes only and do not represent an endorsement of a product or service by StarTech.com, or an endorsement of the product(s) to which this manual applies by the third-party company in question. Regardless of any direct acknowledgement elsewhere in the body of this document, StarTech.com hereby acknowledges that all trademarks, registered trademarks, service marks, and other protected names and/or symbols contained in this manual and related documents are the property of their respective holders.

Table of Contents

Introduction	1
Packaging Contents	1
System Requirements.....	1
Product Overview	1
Jumper Settings.....	2
RS232 Pinout.....	2
Installation	3
Hardware Installation	3
Driver Installation.....	4
Verifying Installation	5
Specifications.....	6
Technical Support	7
Warranty Information.....	7

Introduction

The PEX2S553S 2-Port PCI Express Serial Card lets you add two ESD-Protected (15kV) RS232 ports, with 5V or 12V selectable power output through a PCI Express slot.

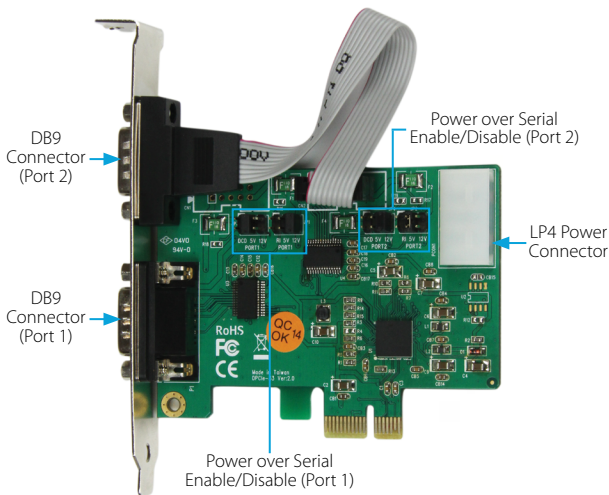
Packaging Contents

- 1x Serial Card
- 2x Low Profile Brackets
- 1x Driver CD
- 1x Instruction Manual

System Requirements

- Available PCI Express slot
- Available LP4 power connector (if additional power is required)

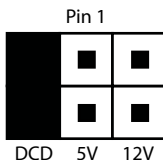
Product Overview



Jumper Settings

Power over serial Enable/Disable (per-port):

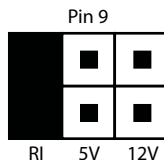
Each port has 2 sets of jumper pins (labeled above) that can be configured to provide power over Pin 1 and/or Pin 9, or neither.



DCD (Data Carrier Detect): No power sent over Pin 1

5V: DC5V, from LP4 (LP4 power connection required)

12V: DC12V, from LP4 (LP4 power connection required)

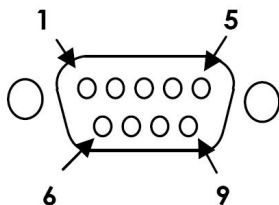


RI (Ring Indicator): No power sent over Pin 9

5V: DC5V, from LP4 (LP4 power connection required)

12V: DC12V, from LP4 (LP4 power connection required)

RS232 Pinout



Pin 1	DCD
Pin 2	RXD
Pin 3	TXD
Pin 4	DTR
Pin 5	GND
Pin 6	DSR
Pin 7	RTS
Pin 8	CTS
Pin 9	RI

NOTE: Pin 1 and/or 9 of the DB9 connector will output DC power if the corresponding jumper was enabled.

Installation

WARNING! PCI Express cards, like all computer equipment, can be severely damaged by static electricity. Be sure that you are properly grounded before opening your computer case or touching your PCI card. StarTech.com recommends that you wear an anti-static strap when installing any computer component. If an anti-static strap is unavailable, discharge yourself of any static electricity build-up by touching a large grounded metal surface (such as the computer case) for several seconds. Also be careful to handle the card by its edges and not the gold connectors.

Hardware Installation

1. Turn your computer off and any peripherals connected to the computer (i.e. Printers, external hard drives, etc.). Unplug the power cable from the rear of the power supply on the back of the computer and disconnect all peripheral devices.
2. Remove the cover from the computer case. Refer to documentation for your computer system for details.
3. Locate an open PCI Express slot and remove the metal cover plate on the rear of the computer case.
4. Gently insert the card into the open PCI Express slot and fasten the card's bracket to the rear of the case.

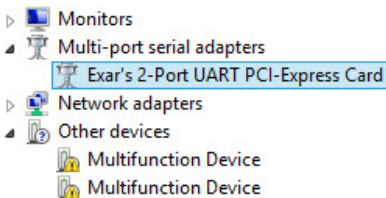
NOTE: If installing the card into a low profile system, replacing the pre-installed standard profile bracket with the included low profile bracket may be necessary.

5. (Optional) Connect an available LP4 power connection from your system power supply to the card if additional power is required.
6. Place the cover back onto the computer case.
7. Insert the power cable into the socket on the power supply and reconnect all other peripherals removed in Step 1.

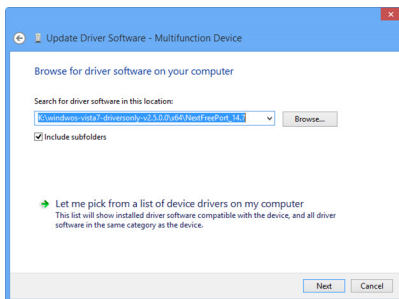
Driver Installation

Windows

1. Upon starting Windows, if the *Found New Hardware* wizard appears on the screen, cancel/close the window and insert the included Driver CD into the computer's CD/DVD drive.
2. Open the *Device Manager* by right-clicking on **Computer**, and then select **Manage**. In the new *Computer Management* window, select **Device Manager** from the left window panel (For Windows 8, open the **Control Panel** and select **Device Manager**).
3. Expand the *Multi-port serial adapters* section and right-click on the newly detected "Exar's 2-Port UART PCI-Express Card" device

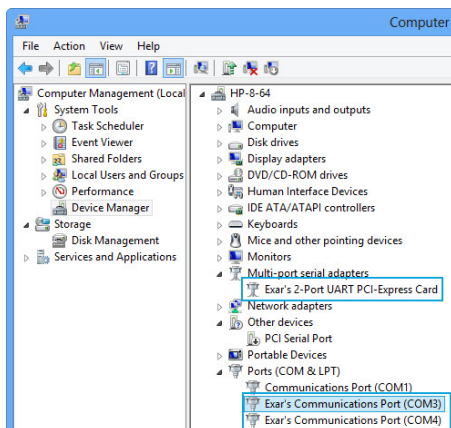


4. Select **Update Driver Software**, which will start the *Update Driver Software Wizard*.
5. On the *How do you want to search for driver software?* window, click **Browse my computer for driver software**.
6. Click the **Browse** button, and navigate to your CD/DVD drive.
7. Select the appropriate 32 or 64-bit OS folder for the system you are using and click **Next** to install the drivers.



Verifying Installation

1. Open the *Device Manager* by right-clicking on **Computer**, and then select **Manage**. In the new *Computer Management* window, select **Device Manager** from the left window panel (For Windows 8, open the **Control Panel** and select **Device Manager**).
2. Expand the *Multifunction Adapters and Ports (COM & LPT)* sections. On a successful install, you should see 1 *Exar's 2-Port UART PCI-Express Card* device in the Multifunction Adapters section, and 2 *Exar's Communications Port (COMx)* devices installed with no exclamation points or question marks.



Specifications

Host Interface	PCI Express
Form Factor	Standard Profile (Low Profile bracket incl.)
Chipset ID	Exar - XR17V352
External Connectors	2 x DB-9 (9 pin; D-Sub)
Supported Protocols	RS-232
Maximum Baud Rate	921.6 Kbps
Data Bits	5, 6, 7, 8
Parity	Even, Odd, Mark, Space, None
Stop Bits	1, 1.5, 2
Flow Control	None, Xon/Xoff, RTS/CTS, DTR/DSR
Operating Temperature	-30°C to 75°C (-22°F to 167°F)
Storage Temperature	-40°C to 85°C (-40°F to 185°F)
Humidity	5~95% RH (Non-Condensing)
Dimensions	121 x 18 x 98 mm
Weight	35 g
Compatible Operating Systems	Windows® 8 (32/64bit), 7 (32/64), Vista(32/64), XP(32/64), 2000 Windows® Server 2008 R2, 2003(32/64) Linux Kernel 3.0, 2.6.32, 2.6.31, 2.6.27, 2.6.16

Technical Support

StarTech.com's lifetime technical support is an integral part of our commitment to provide industry-leading solutions. If you ever need help with your product, visit **www.startech.com/support** and access our comprehensive selection of online tools, documentation, and downloads.

For the latest drivers/software, please visit **www.startech.com/downloads**

Warranty Information

This product is backed by a lifetime warranty.

In addition, StarTech.com warrants its products against defects in materials and workmanship for the periods noted, following the initial date of purchase. During this period, the products may be returned for repair, or replacement with equivalent products at our discretion. The warranty covers parts and labor costs only. StarTech.com does not warrant its products from defects or damages arising from misuse, abuse, alteration, or normal wear and tear.

Limitation of Liability

In no event shall the liability of StarTech.com Ltd. and StarTech.com USA LLP (or their officers, directors, employees or agents) for any damages (whether direct or indirect, special, punitive, incidental, consequential, or otherwise), loss of profits, loss of business, or any pecuniary loss, arising out of or related to the use of the product exceed the actual price paid for the product. Some states do not allow the exclusion or limitation of incidental or consequential damages. If such laws apply, the limitations or exclusions contained in this statement may not apply to you.

Hard-to-find made easy. At StarTech.com, that isn't a slogan. It's a promise.

StarTech.com is your one-stop source for every connectivity part you need. From the latest technology to legacy products — and all the parts that bridge the old and new — we can help you find the parts that connect your solutions.

We make it easy to locate the parts, and we quickly deliver them wherever they need to go. Just talk to one of our tech advisors or visit our website. You'll be connected to the products you need in no time.

Visit www.startech.com for complete information on all StarTech.com products and to access exclusive resources and time-saving tools.

StarTech.com is an ISO 9001 Registered manufacturer of connectivity and technology parts. StarTech.com was founded in 1985 and has operations in the United States, Canada, the United Kingdom and Taiwan servicing a worldwide market.